

Hovingham Vehicle Survey - 10th June to 16th June 2021

Park Street (at entrance to village)

(Entering Village from Brandsby)

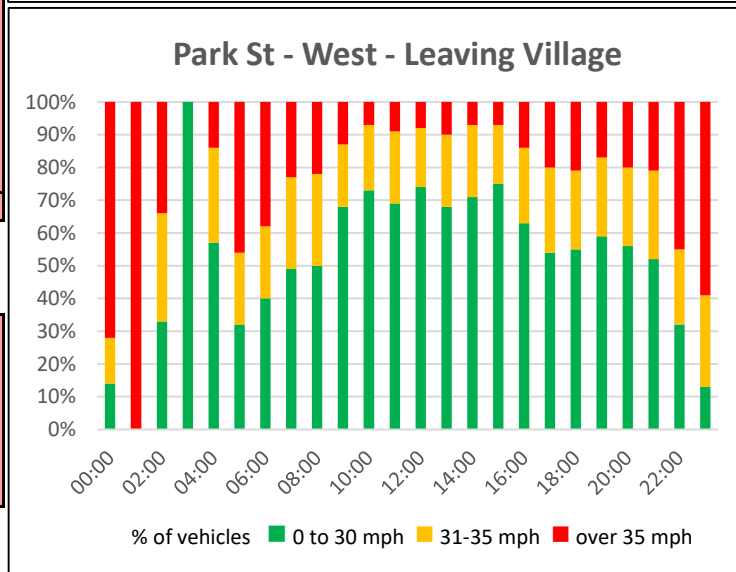
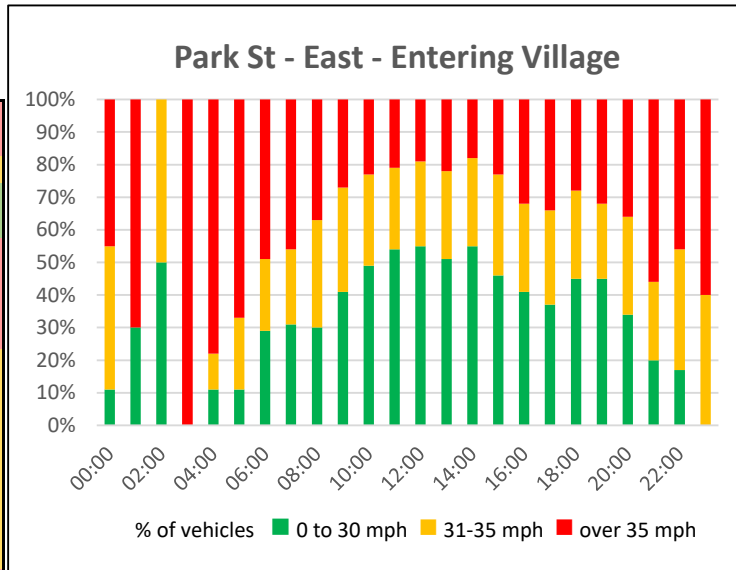
E _{ast}	Flow	0-30mph	31-35mph	>35mph	85 th t mph
00:00	14	2 (14%)	2 (14%)	10 (72%)	41.5
01:00	3			3 (100%)	48.3
02:00	3	1 (33%)	1 (33%)	1 (34%)	33.3
03:00	1	1 (100%)			25.9
04:00	7	4 (57%)	2 (29%)	1 (14%)	30.0
05:00	73	23 (32%)	16 (22%)	34 (46%)	44.5
06:00	120	48 (40%)	26 (22%)	46 (38%)	42.9
07:00	302	147 (49%)	84 (28%)	71 (23%)	36.3
08:00	447	223 (50%)	124 (28%)	100 (22%)	37.5
09:00	498	339 (68%)	97 (19%)	62 (13%)	33.6
10:00	427	311 (73%)	86 (20%)	30 (7%)	32.1
11:00	531	366 (69%)	117 (22%)	48 (9%)	32.3
12:00	499	370 (74%)	90 (18%)	39 (8%)	32.6
13:00	457	312 (68%)	102 (22%)	43 (10%)	33.2
14:00	421	299 (71%)	91 (22%)	31 (7%)	32.6
15:00	518	391 (75%)	91 (18%)	36 (7%)	31.3
16:00	492	310 (63%)	111 (23%)	71 (14%)	33.8
17:00	540	291 (54%)	141 (26%)	108 (20%)	36.0
18:00	360	198 (55%)	85 (24%)	77 (21%)	36.6
19:00	199	118 (59%)	48 (24%)	33 (17%)	35.3
20:00	114	64 (56%)	27 (24%)	23 (20%)	37.9
21:00	96	50 (52%)	26 (27%)	20 (21%)	38.1
22:00	62	20 (32%)	14 (23%)	28 (45%)	42.3
23:00	40	5 (13%)	11 (28%)	24 (59%)	47.8
00-24	6224	3893 (63%)	1392 (22%)	939 (15%)	35.0

	Flow	0-30mph	31-35mph	>35mph	85 th t mph
Mon	939	573 (61%)	219 (23%)	147 (16%)	36.5
Tue	904	498 (55%)	232 (26%)	174 (19%)	37.7
Wed	866	454 (52%)	250 (29%)	162 (19%)	37.7
Thu	962	702 (73%)	156 (16%)	104 (11%)	36.0
Fri	1082	728 (67%)	213 (20%)	141 (13%)	35.4
Sat	839	572 (68%)	163 (19%)	104 (13%)	35.3
Sun	632	366 (58%)	159 (25%)	107 (17%)	37.9

(Leaving Village to Brandsby)

W _{est}	Flow	0-30mph	31-35mph	>35mph	85 th t mph
00:00	9	1 (11%)	4 (44%)	4 (45%)	35.8
01:00	10	3 (30%)		7 (70%)	38.6
02:00	2	1 (50%)	1 (50%)		30.1
03:00	5			5 (100%)	39.6
04:00	9	1 (11%)	1 (11%)	7 (78%)	49.0
05:00	89	10 (11%)	20 (22%)	59 (67%)	40.3
06:00	223	65 (29%)	49 (22%)	109 (49%)	43.1
07:00	361	111 (31%)	83 (23%)	167 (46%)	41.2
08:00	413	124 (30%)	135 (33%)	154 (37%)	39.0
09:00	340	138 (41%)	108 (32%)	94 (27%)	37.7
10:00	327	161 (49%)	90 (28%)	76 (23%)	35.4
11:00	430	232 (54%)	106 (25%)	92 (21%)	36.7
12:00	423	231 (55%)	109 (26%)	83 (19%)	36.3
13:00	365	185 (51%)	99 (27%)	81 (22%)	37.5
14:00	403	222 (55%)	107 (27%)	74 (18%)	36.2
15:00	457	210 (46%)	141 (31%)	106 (23%)	37.3
16:00	474	193 (41%)	130 (27%)	151 (32%)	38.3
17:00	467	172 (37%)	135 (29%)	160 (34%)	39.0
18:00	308	138 (45%)	82 (27%)	88 (28%)	37.1
19:00	164	73 (45%)	37 (23%)	54 (32%)	38.8
20:00	96	33 (34%)	29 (30%)	34 (36%)	41.2
21:00	83	17 (20%)	20 (24%)	46 (56%)	48.0
22:00	46	8 (17%)	17 (37%)	21 (46%)	43.2
23:00	10		4 (40%)	6 (60%)	39.4
00-24	5514	2329 (42%)	1507 (27%)	1678 (31%)	38.7

	Flow	0-30mph	31-35mph	>35mph	85 th t mph
Mon	786	278 (35%)	229 (29%)	279 (36%)	42.0
Tue	817	318 (39%)	238 (29%)	261 (32%)	40.2
Wed	790	288 (36%)	229 (29%)	273 (35%)	38.9
Thu	877	445 (51%)	213 (24%)	219 (25%)	37.6
Fri	912	399 (44%)	236 (26%)	277 (30%)	40.4
Sat	739	403 (55%)	187 (25%)	149 (20%)	36.9
Sun	593	198 (33%)	175 (30%)	220 (37%)	38.5



Notes - Vehicle Flows are total vehicles for the week
 - Speeds are in mph
 - 85th percentile is the speed at which 85% of all vehicles are observed to travel.

Hovingham Vehicle Survey - 10th June to 16th June 2021

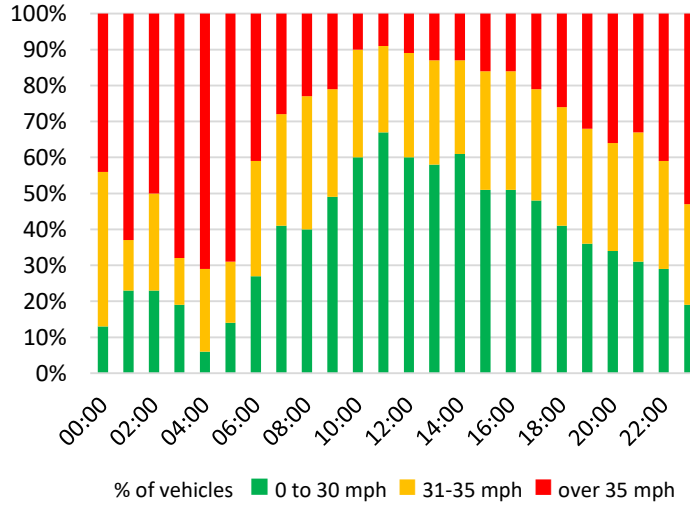
Malton Road (outside telephone exchange)

(Leaving Village to Malton)

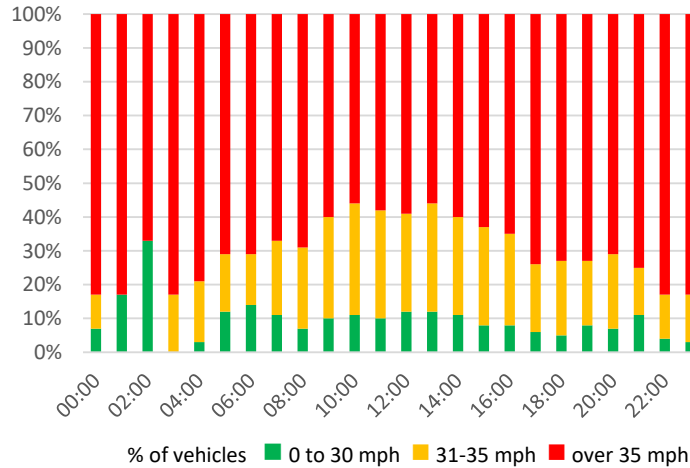
E _{ast}	Flow	0-30mph	31-35mph	>35mph	85 ^t mph
00:00	23	3 (13%)	10 (43%)	10 (44%)	41.1
01:00	22	5 (23%)	3 (14%)	14 (63%)	42.2
02:00	22	5 (23%)	6 (27%)	11 (50%)	46.7
03:00	16	3 (19%)	2 (13%)	11 (68%)	39.6
04:00	47	3 (6%)	11 (23%)	33 (71%)	42.3
05:00	133	19 (14%)	23 (17%)	91 (69%)	41.7
06:00	454	122 (27%)	147 (32%)	185 (41%)	41.4
07:00	1060	439 (41%)	325 (31%)	296 (28%)	38.1
08:00	1447	575 (40%)	542 (37%)	330 (23%)	36.6
09:00	1357	671 (49%)	404 (30%)	282 (21%)	36.1
10:00	1482	885 (60%)	438 (30%)	159 (10%)	33.8
11:00	1618	1076 (67%)	388 (24%)	154 (9%)	33.6
12:00	1538	918 (60%)	439 (29%)	181 (11%)	34.1
13:00	1370	795 (58%)	395 (29%)	180 (13%)	34.5
14:00	1435	873 (61%)	378 (26%)	184 (13%)	34.3
15:00	1508	772 (51%)	491 (33%)	245 (16%)	35.6
16:00	1588	809 (51%)	524 (33%)	255 (16%)	35.2
17:00	1366	662 (48%)	419 (31%)	285 (21%)	36.4
18:00	938	382 (41%)	305 (33%)	251 (26%)	38.0
19:00	490	177 (36%)	159 (32%)	154 (32%)	38.7
20:00	348	118 (34%)	103 (30%)	127 (36%)	39.8
21:00	272	84 (31%)	97 (36%)	91 (33%)	39.9
22:00	138	40 (29%)	42 (30%)	56 (41%)	42.6
23:00	53	10 (19%)	15 (28%)	28 (53%)	42.0
00-24	18725	9446 (50%)	5666 (30%)	3613 (20%)	36.1

	Flow	0-30mph	31-35mph	>35mph	85 ^t mph
Mon	2662	1325 (50%)	795 (30%)	542 (20%)	39.6
Tue	2729	1322 (48%)	865 (32%)	542 (20%)	38.9
Wed	2741	1251 (46%)	915 (33%)	575 (21%)	38.6
Thu	2854	1460 (51%)	843 (30%)	551 (19%)	38.1
Fri	3068	1598 (52%)	923 (30%)	547 (18%)	39.4
Sat	2430	1239 (51%)	717 (30%)	474 (19%)	37.2
Sun	2241	1251 (56%)	608 (27%)	382 (17%)	37.5

Malton Rd-East-Leaving Village



Malton Rd - West - Entering Village



(Entering the Village from Malton)

W _{est}	Flow	0-30mph	31-35mph	>35mph	85 ^t mph
00:00	29	2 (7%)	3 (10%)	24 (83%)	45.3
01:00	6	1 (17%)		5 (83%)	39.7
02:00	6	2 (33%)		4 (67%)	39.3
03:00	12		2 (17%)	10 (83%)	42.0
04:00	34	1 (3%)	6 (18%)	27 (79%)	46.7
05:00	162	20 (12%)	28 (17%)	114 (71%)	43.3
06:00	374	54 (14%)	55 (15%)	265 (71%)	44.4
07:00	852	90 (11%)	188 (22%)	574 (67%)	43.3
08:00	1267	85 (7%)	307 (24%)	875 (69%)	43.2
09:00	1386	144 (10%)	412 (30%)	830 (60%)	41.5
10:00	1421	153 (11%)	466 (33%)	802 (56%)	40.4
11:00	1591	167 (10%)	507 (32%)	917 (58%)	41.3
12:00	1423	170 (12%)	412 (29%)	841 (59%)	41.2
13:00	1410	166 (12%)	456 (32%)	788 (56%)	41.0
14:00	1440	152 (11%)	424 (29%)	864 (60%)	41.3
15:00	1584	130 (8%)	456 (29%)	998 (63%)	41.7
16:00	1559	130 (8%)	416 (27%)	1013 (65%)	41.9
17:00	1430	80 (6%)	288 (20%)	1062 (74%)	43.2
18:00	948	44 (5%)	206 (22%)	698 (73%)	43.8
19:00	488	38 (8%)	91 (19%)	359 (73%)	44.3
20:00	336	25 (7%)	73 (22%)	238 (71%)	44.4
21:00	256	29 (11%)	37 (14%)	190 (75%)	45.8
22:00	156	6 (4%)	21 (13%)	129 (83%)	44.9
23:00	77	2 (3%)	11 (14%)	64 (83%)	47.3
00-24	18247	1691 (9%)	4865 (27%)	11691 (64%)	42.3

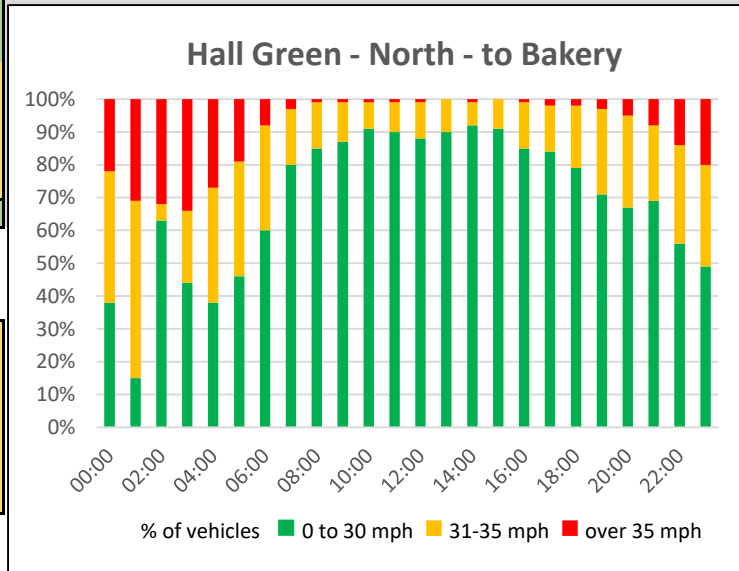
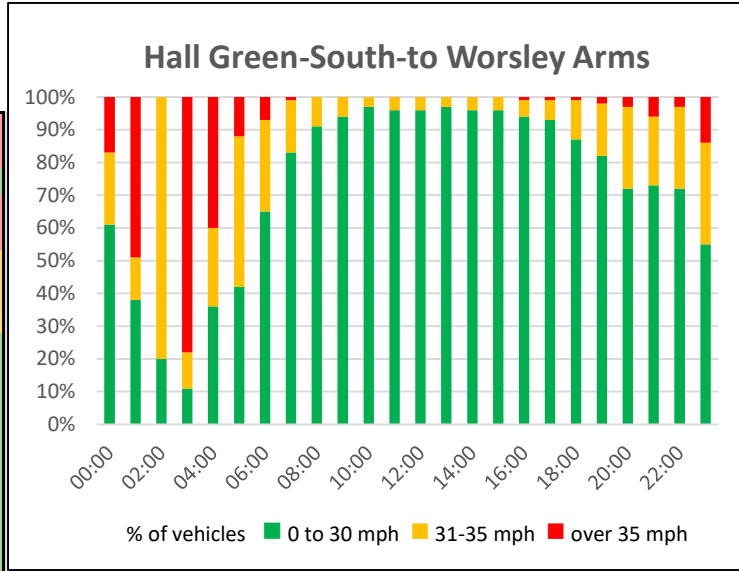
	Flow	0-30mph	31-35mph	>35mph	85 ^t mph
Mon	2609	244 (9%)	703 (27%)	1662 (64%)	42.3
Tue	2604	227 (9%)	660 (25%)	1717 (66%)	41.9
Wed	2728	243 (9%)	697 (26%)	1788 (65%)	43.2
Thu	2723	326 (12%)	816 (30%)	1581 (58%)	43.4
Fri	3040	269 (9%)	744 (24%)	2027 (67%)	42.7
Sat	2455	189 (8%)	680 (28%)	1586 (64%)	43.4
Sun	2088	193 (9%)	565 (27%)	1330 (64%)	44.5

Hovingham Vehicle Survey - 10th June to 16th June 2021

Hall Green (outside Village Hall)

(to Worsley Arms & Malton)

South	Flow	0-30mph	31-35mph	>35mph	85%t mph
00:00	36	22 (61%)	8 (22%)	6 (17%)	37.2
01:00	8	3 (38%)	1 (13%)	4 (49%)	36.9
02:00	5	1 (20%)	4 (80%)		28.6
03:00	9	1 (11%)	1 (11%)	7 (78%)	40.1
04:00	33	12 (36%)	8 (24%)	13 (40%)	38.2
05:00	118	50 (42%)	54 (46%)	14 (12%)	34.3
06:00	379	246 (65%)	108 (28%)	25 (7%)	32.8
07:00	891	741 (83%)	141 (16%)	9 (1%)	30.6
08:00	1226	1117 (91%)	106 (9%)	3 (0%)	29.1
09:00	1194	1117 (94%)	74 (6%)	3 (0%)	28.5
10:00	1339	1295 (97%)	43 (3%)	1 (0%)	27.6
11:00	1399	1346 (96%)	50 (4%)	3 (0%)	27.3
12:00	1314	1255 (96%)	56 (4%)	3 (0%)	27.3
13:00	1279	1240 (97%)	38 (3%)	1 (0%)	27.5
14:00	1362	1308 (96%)	52 (4%)	2 (0%)	27.1
15:00	1524	1460 (96%)	62 (4%)	2 (0%)	27.7
16:00	1662	1566 (94%)	89 (5%)	7 (1%)	28.2
17:00	1367	1269 (93%)	85 (6%)	13 (1%)	28.6
18:00	895	783 (87%)	104 (12%)	8 (1%)	29.5
19:00	484	395 (82%)	77 (16%)	12 (2%)	30.4
20:00	301	216 (72%)	76 (25%)	9 (3%)	31.6
21:00	226	166 (73%)	48 (21%)	12 (6%)	31.9
22:00	144	103 (72%)	36 (25%)	5 (3%)	32.1
23:00	67	37 (55%)	21 (31%)	9 (14%)	34.6
00-24	17262	15749 (91%)	1342 (8%)	171 (1%)	28.7



	Flow	0-30mph	31-35mph	>35mph	85%t mph
Mon	2406	2199 (91%)	184 (8%)	23 (1%)	31.4
Tue	2406	2136 (89%)	231 (10%)	39 (1%)	32.4
Wed	2395	2138 (89%)	228 (10%)	29 (1%)	30.9
Thu	2634	2453 (93%)	166 (6%)	15 (1%)	30.3
Fri	2815	2587 (92%)	203 (7%)	25 (1%)	31.1
Sat	2479	2278 (92%)	182 (7%)	19 (1%)	31.1
Sun	2127	1958 (92%)	148 (7%)	21 (1%)	30.8

(to Bakery & Helmsley)

North	Flow	0-30mph	31-35mph	>35mph	85%t mph
00:00	42	16 (38%)	17 (40%)	9 (22%)	37.5
01:00	13	2 (15%)	7 (54%)	4 (31%)	36.9
02:00	19	12 (63%)	1 (5%)	6 (32%)	40.8
03:00	9	4 (44%)	2 (22%)	3 (34%)	34.1
04:00	34	13 (38%)	12 (35%)	9 (27%)	36.0
05:00	68	31 (46%)	24 (35%)	13 (19%)	35.1
06:00	360	217 (60%)	116 (32%)	27 (8%)	33.4
07:00	914	734 (80%)	157 (17%)	23 (3%)	30.9
08:00	1460	1238 (85%)	206 (14%)	16 (1%)	30.2
09:00	1397	1214 (87%)	169 (12%)	14 (1%)	29.7
10:00	1460	1328 (91%)	122 (8%)	10 (1%)	29.1
11:00	1579	1418 (90%)	148 (9%)	13 (1%)	29.1
12:00	1529	1347 (88%)	170 (11%)	12 (1%)	29.6
13:00	1282	1151 (90%)	124 (10%)	7 (0%)	29.2
14:00	1375	1262 (92%)	101 (7%)	12 (1%)	28.9
15:00	1387	1257 (91%)	118 (9%)	12 (0%)	29.2
16:00	1505	1286 (85%)	207 (14%)	12 (1%)	29.9
17:00	1375	1161 (84%)	196 (14%)	18 (2%)	30.0
18:00	931	731 (79%)	176 (19%)	24 (2%)	30.9
19:00	516	364 (71%)	132 (26%)	20 (3%)	31.9
20:00	345	231 (67%)	95 (28%)	19 (5%)	32.6
21:00	261	180 (69%)	60 (23%)	21 (8%)	32.6
22:00	143	80 (56%)	43 (30%)	20 (14%)	33.8
23:00	78	38 (49%)	24 (31%)	16 (20%)	35.7
00-24	18085	15317 (85%)	2427 (13%)	341 (2%)	30.1

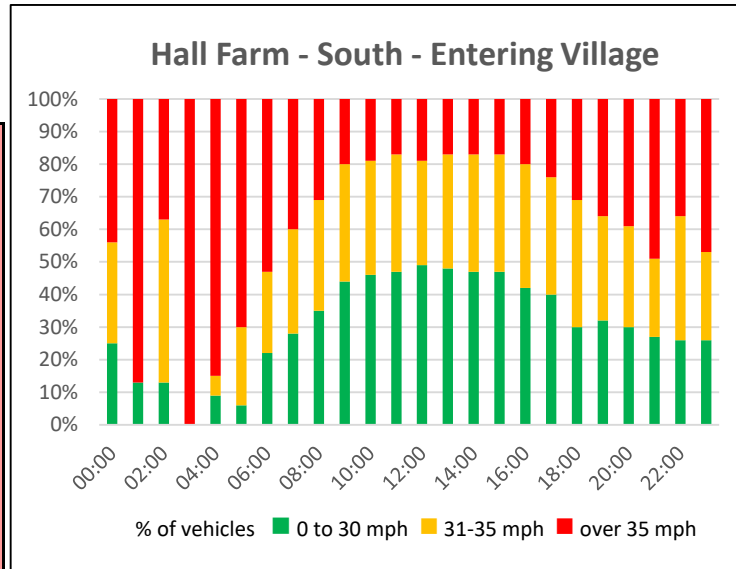
	Flow	0-30mph	31-35mph	>35mph	85%t mph
Mon	2608	2250 (86%)	310 (12%)	48 (2%)	32.6
Tue	2492	2111 (85%)	331 (13%)	50 (2%)	32.5
Wed	2437	2043 (84%)	348 (14%)	46 (2%)	32.1
Thu	2768	2316 (84%)	399 (14%)	53 (2%)	32.1
Fri	3021	2569 (85%)	395 (13%)	57 (2%)	33.0
Sat	2541	2148 (85%)	347 (14%)	46 (1%)	31.8
Sun	2215	1878 (85%)	297 (13%)	40 (2%)	31.4

Hovingham Vehicle Survey - 10th June to 16th June 2021

Hall Farm (by Old Railway Station)

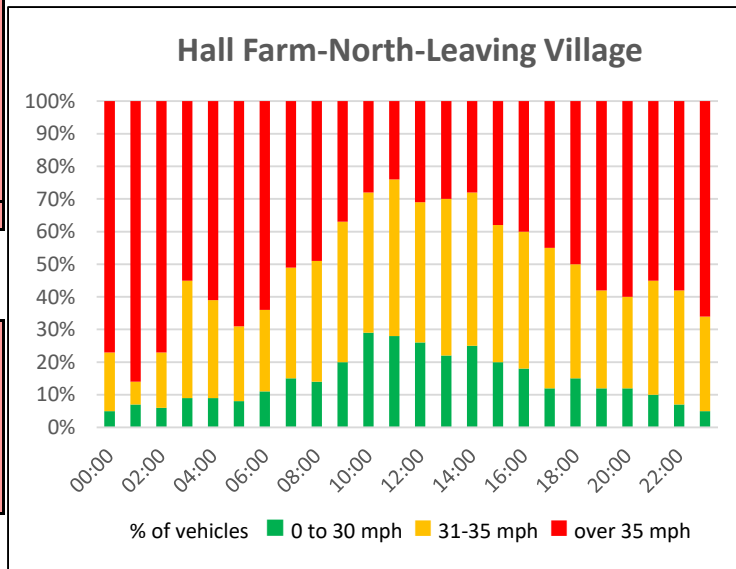
(Entering Village from Helmsley)

South	Flow	0-30mph	31-35mph	>35mph	85%t mph
00:00	36	9 (25%)	11 (31%)	16 (44%)	43.5
01:00	8	1 (13%)		7 (87%)	40.2
02:00	8	1 (13%)	4 (50%)	3 (37%)	36.5
03:00	11			11 (100%)	48.8
04:00	32	3 (9%)	2 (6%)	27 (85%)	44.1
05:00	119	7 (6%)	29 (24%)	83 (70%)	43.0
06:00	356	79 (22%)	90 (25%)	187 (53%)	41.0
07:00	796	221 (28%)	253 (32%)	322 (40%)	40.0
08:00	1140	402 (35%)	393 (34%)	345 (31%)	38.2
09:00	1101	479 (44%)	396 (36%)	226 (20%)	36.3
10:00	1251	579 (46%)	434 (35%)	238 (19%)	35.9
11:00	1320	623 (47%)	471 (36%)	226 (17%)	35.6
12:00	1254	613 (49%)	397 (32%)	244 (19%)	36.2
13:00	1219	581 (48%)	428 (35%)	210 (17%)	35.4
14:00	1303	613 (47%)	465 (36%)	225 (17%)	35.6
15:00	1490	698 (47%)	539 (36%)	253 (17%)	35.5
16:00	1605	680 (42%)	604 (38%)	321 (20%)	36.2
17:00	1373	547 (40%)	498 (36%)	328 (24%)	37.2
18:00	887	267 (30%)	344 (39%)	276 (31%)	37.5
19:00	430	137 (32%)	137 (32%)	156 (36%)	40.4
20:00	307	93 (30%)	94 (31%)	120 (39%)	40.3
21:00	223	61 (27%)	54 (24%)	108 (49%)	40.5
22:00	144	37 (26%)	55 (38%)	52 (36%)	41.0
23:00	66	17 (26%)	18 (27%)	31 (47%)	41.9
00-24	16479	6748 (41%)	5716 (35%)	4015 (24%)	37.2



(Leaving to Helmsley)

North	Flow	0-30mph	31-35mph	>35mph	85%t mph
00:00	44	2 (5%)	8 (18%)	34 (77%)	43.6
01:00	14	1 (7%)	1 (7%)	12 (86%)	45.0
02:00	18	1 (6%)	3 (17%)	14 (77%)	45.4
03:00	11	1 (9%)	4 (36%)	6 (55%)	41.7
04:00	33	3 (9%)	10 (30%)	20 (61%)	41.3
05:00	62	5 (8%)	14 (23%)	43 (69%)	44.3
06:00	353	40 (11%)	87 (25%)	226 (64%)	42.0
07:00	875	131 (15%)	298 (34%)	446 (51%)	40.7
08:00	1391	200 (14%)	514 (37%)	677 (49%)	39.5
09:00	1283	256 (20%)	548 (43%)	479 (37%)	38.5
10:00	1374	403 (29%)	584 (43%)	387 (28%)	37.0
11:00	1525	425 (28%)	735 (48%)	365 (24%)	36.6
12:00	1462	386 (26%)	634 (43%)	442 (31%)	37.7
13:00	1251	280 (22%)	602 (48%)	369 (30%)	37.4
14:00	1348	334 (25%)	632 (47%)	382 (28%)	37.1
15:00	1369	276 (20%)	569 (42%)	524 (38%)	38.4
16:00	1443	258 (18%)	611 (42%)	574 (40%)	38.8
17:00	1319	164 (12%)	563 (43%)	592 (45%)	39.4
18:00	844	129 (15%)	298 (35%)	417 (50%)	40.6
19:00	482	59 (12%)	144 (30%)	279 (58%)	42.5
20:00	339	40 (12%)	96 (28%)	203 (60%)	42.0
21:00	252	24 (10%)	87 (35%)	141 (55%)	42.7
22:00	148	11 (7%)	52 (35%)	85 (58%)	43.5
23:00	76	4 (5%)	22 (29%)	50 (66%)	42.5
00-24	17316	3433 (20%)	7116 (41%)	6767 (39%)	39.0



	Flow	0-30mph	31-35mph	>35mph	85%t mph
Mon	2254	947 (42%)	736 (33%)	571 (25%)	39.5
Tue	2303	888 (39%)	811 (35%)	604 (26%)	39.7
Wed	2483	1008 (41%)	840 (34%)	635 (25%)	39.7
Thu	2420	1075 (44%)	778 (32%)	567 (24%)	38.3
Fri	2619	1043 (40%)	943 (36%)	633 (24%)	39.8
Sat	2338	958 (41%)	843 (36%)	537 (23%)	38.6
Sun	2062	829 (40%)	765 (37%)	468 (23%)	38.9

	Flow	0-30mph	31-35mph	>35mph	85%t mph
Mon	2409	521 (22%)	976 (41%)	912 (37%)	40.9
Tue	2466	425 (17%)	1021 (41%)	1020 (42%)	41.1
Wed	2599	457 (18%)	1076 (41%)	1066 (41%)	40.5
Thu	2583	519 (20%)	1064 (41%)	1000 (39%)	40.7
Fri	2758	554 (20%)	1126 (41%)	1078 (39%)	41.0
Sat	2379	490 (21%)	962 (40%)	927 (39%)	40.6
Sun	2122	467 (22%)	891 (42%)	764 (36%)	40.1