



# The Hovingham and Scackleton Newsletter

## February 2018



### Welcome to the Hovingham and Scackleton Newsletter

Welcome to this colour edition kindly sponsored by the Hovingham Village Market, who are celebrating their 100<sup>th</sup> Birthday on February 3rd. Come and join the festivities and appreciate the efforts of the volunteer team, stallholders and those that run the café. Yes, there will be balloons – and a cake.

From small beginnings the market has overcome doubters to flourish and provide a wonderful social outing for all and retail therapy for many. The Newsletter Team congratulates the Market on their 100<sup>th</sup> Birthday and especially thanks them for their ongoing support of this Newsletter.

As the snow falls and the New Year winter blues bite, we find we have lost our bus service we can only hope that some effective alternative is found for those of us that rely on the buses.

Don't miss the Annual Rainfall figures and see how that explains the waterlogged fields, and empathise with the tribulations of farming in the winter months and learn all about Dew Ponds!!

**Ann Chapman**

### Hovingham 194 bus service to Malton no longer running



Bus company, Stephenson's of Easingwold, ceased to provide the 194 bus service (and all other bus services), and school bus services, from Monday 22<sup>nd</sup> January.

**NYCC** were able to find alternative contractors for the school services however, **NYCC** were unsuccessful in finding anyone to provide an alternative 194 service.

This decision has very serious implications for those users of the bus service who have no alternative means of transport. In the short-term residents who can offer lifts to those needing them are encouraged to do so.

Ryedale Community Transport can provide alternative transport and they can be contacted via their website [www.ryedalect.org.uk](http://www.ryedalect.org.uk) or (01653)- 699059. See Page 10 for details.

Please visit the village website [www.hovingham.org.uk/bus](http://www.hovingham.org.uk/bus) for the latest news

### Hovingham Market – It's our 100<sup>th</sup> Birthday!!



#### A small village with 100 surprises

Saturday 3<sup>rd</sup> February, brings a very special celebration with the occasion of our 100<sup>th</sup> Market. A market that started out as a seed corn of an idea in a Community Action Plan has flourished into a regular, thriving market of over 55 outdoor and indoor stalls.

To celebrate, at the Market are giving away £200 of Market vouchers to visitors.

And, we'll also have a unique celebration cake created by a stallholder collaboration of Haxby Bakehouse, TheWall@Coulton, Ryedale Cheeses, Butterflies Chocolates, Roost Coffee, YO Bakehouse, and the White Cottage Bakery.

The founding creators of the market will be there, as will our long standing "pioneer" stallholders.

We asked Local farmer and Market Chairman, Pete Stark, who has had a stall at the market from day one, what makes the Hovingham Market so special?

"The market champions local food, art and crafts. Local provenance is important to us and helps the market be sustainable.

And, we support local community groups who, at the market, can meet residents in a safe and friendly environment and raise much needed funds.

It is often a surprise to visitors to learn that our market is run entirely by volunteers."

See more inside in our special 100<sup>th</sup> Market Colour Edition

Contact: [newsletter@hovingham.org.uk](mailto:newsletter@hovingham.org.uk) or (01653)-628364

Published and © 2018 by The Hovingham & Scackleton Newsletter Group. Views are not necessarily those of Group or Parish Council

Residents are always welcome to come along to Parish Council Meetings which are normally held on the second Wednesday of every other month (January, March, May, July, September and November).

A special "Annual Parish Meeting" will take place on Wednesday 14<sup>th</sup> March at 7pm in the Hovingham Community Room where residents are especially invited to come along to hear what has been achieved in the year and have their say.

This will be followed by the Parish Council Meeting.

### How to commemorate the 'War to end all Wars'?

#### How should Hovingham commemorate 100th anniversary of the "War to end all wars"?

On Sunday November 11th 2018, the 100th anniversary of the end of WW1, communities all over the UK will be commemorating Armistice Day.

All Saints Church, the Parish Council and the Hovingham Branch of the Royal British Legion invite all local residents and organisations to bring forward ideas as to how Hovingham should mark the occasion - and the lead up to it.

Please bring your ideas to an open meeting on **Thursday 15th February at 19:00** in the Community Room of the Village Hall.

*Sir William Worsley, Phil Chapman, Richard Orange-Bromehead*

### Benefice Sunday Lunch – chase away the winter blues

Come and chase away those winter blues with a good Sunday lunch in great company!

We are planning to have a Benefice Sunday lunch on 25th February in the Cresswell Arms, Appleton le Street, at 1pm.

The cost per head is likely to be around £10/£15 for a main course followed by pudding or cheese – the exact price will depend on numbers. So, if you might like to come please contact: Colleen on 690913 or Daphne on 628868.

Lifts can be arranged for those who would like transport.

### Casino Night - 9<sup>th</sup> February

In aid of  
**Hovingham Cricket Club**



## CASINO NIGHT

#### Hovingham Village Hall

Friday 9th February 2018 7pm-7:30pm start

**£12.50 Ticket**

*includes glass of prosecco, canapes and casino chips*

*Dress Code: Black Tie/Secret Agent Glittering/Glamorous*    *On the night: Extra Casino Chips Raffle | Paying Bar*

### The 2018 Hovingham Litter Hunt - Saturday 24<sup>th</sup> March @10.00am

Each year the Hovingham Action Group organises a Litter Pick, this year it will again be as part of the 'Great British Spring Clean' campaign. The amount of litter is a blight on the landscape and can also be dangerous to wildlife. Quite why people drop their litter is hard to understand.

#### **Please join us in the Hovingham Litter Hunt:**

We will provide rubbish sacks, gloves, safety vests and litter picker devices available for all those that help.

Children and adults are welcome.

Ring: David Richardson on 628 227 for more details: or email [action@hovingham.org.uk](mailto:action@hovingham.org.uk)



**We would be very glad of your help for an hour or two:**  
**We meet at the Worsley Arms on Saturday 24<sup>th</sup> March at 10.00am**  
**And please join us there for Coffee and Cake afterwards. We are grateful to Sally and Tony Finn for their generosity.**  
**If the weather is bad we will reschedule to Saturday 14<sup>th</sup> April**



It seems a while since Christmas but may we thank members and friends for attending our morning Carol Service, which was a great start to the celebrations of Jesus' birth. Two Sundays later we had another well attended service when members of Hovingham Anglican Church and Slingsby Chapel joined us for our important annual Covenant Service, at which we celebrate all that God has done for us, and affirm that we give our lives and choices to God.

Also, do not forget the monthly T-spot held at the Rolling Pin café on the second Thursday of the month at 10.30am.

### Women's events

Hovingham has a Women's Fellowship Group meeting the first Tuesday of the month at 7pm. New members welcome - see Village Weekly Events Diary for when and where.

On Friday March 3rd the annual Women's World Day of Prayer service will be conducted by Rev Taffy Morgan at All Saints Church, Terrington at 2pm. This year the service has been prepared by the Christian Women of the Suriname. If you require transport to this event please contact **Sue Goodwill 01653 628077**.

## Hovingham Community Speedwatch

A Community **Speedwatch** Group has been formed in Hovingham. A survey of possible sites around Hovingham took place in December and these sites have been agreed. The next step is for volunteers to be trained which will enable the **Speedwatch** to start. Further details on this can be found on the website at [www.hovingham.org.uk/speedwatch](http://www.hovingham.org.uk/speedwatch).



This **Speedwatch** is to deter vehicle drivers from driving at excessive speed within Hovingham for the safety of residents, visitors and road users.

If you are interested in joining the team; please send an email to [speedwatch@hovingham.org.uk](mailto:speedwatch@hovingham.org.uk).

## Hovingham Recycling Centre - don't abuse it!

The Council refuse collection team will only remove rubbish that is in the blue bins, all other items are left behind, so please do not leave them there! It can be taken to the tip at either Malton or Wombledon.

This is an ongoing problem and this is the second time, just this month, that people have left others to clear up their mess. Leaving food waste and dirty cans only encourages vermin.

The Centre will be closed if this continues. Notices at the centre and on the bins themselves clearly explain the acceptable content.

**Parish Council**



## New year, New you

With exercise classes on our doorstep, it's so easy to keep those new year's resolutions to stay fit and well. Every week at the Village Hall, you'll find pilates, yoga, BarreConcept, stretch & flow classes to give your core a work out and keep your muscles toned and flexible.

All of the classes are inclusive and welcoming whatever your ability. Verity 07821 588117 runs a Hatha Yoga class on Monday evenings [vez\\_4@hotmail.com](mailto:vez_4@hotmail.com) It's £5 for your first Anandini yoga experience, £40 for 5 classes, to be used in an 8 week period, £35 for 5 consecutive classes or £8 per class for those who can only practice occasionally. Also new for 2018 are Pregnancy Yoga Classes – contact Verity for more information.

Tracy Prest 07789 990261 leads the Pilates Class on Friday mornings attracting individuals recovering from injuries and surgery or those wanting precision pilates with the benefits this brings. [www.pilateswithtracey.co.uk](http://www.pilateswithtracey.co.uk)

If you're looking for low impact classes to strengthen your core, improve your posture and flexibility, Katie-Mae Ellis 07515 406097 offers a Stretch & Flow class on Monday morning and a new BarreConcept class on Wednesday. BarreConcept is a mixture of ballet, Pilates and yoga [katie-mae3@hotmail.com](mailto:katie-mae3@hotmail.com) All classes start at 11.15am, the cost is £6 per class on a 'pay as you go' basis. Liz has recently moved to Slingsby and joined the BarreConcept class, "I haven't done much exercise for a while and found that it's not difficult to get into. The exercises are simple and effective. Anyone can give it a go."

So, no excuses, pick up the phone, book into a class and step into 2018, feeling good. All classes are listed on the Hovingham Village Website and the weekly events diary.



**Caroline Davis**



## Park Salon – Fizz and Fun Night – raises £600

A big thank you to everyone who supported our Christmas Shopping Evening on 6th December. We raised £600 for the Yorkshire Air Ambulance. Our guests enjoyed a glass of fizz whilst selecting Christmas goodies from our new range of giftware, jewellery, clothes, hair and beauty products. We've exciting plans for 2018 so watch this space for more news. Wishing all of our clients a very Happy New Year.

*Gillian, Gemma, Becky, The Park at Hovingham*

## Hovingham Poppy Appeal- a record effort

Many thanks to all the door to door collectors, shops and licensed premises who helped to collect a record amount of **£1,831.61** for this year's Poppy Appeal. Thanks also to Hovingham Village Market for again letting us have a community stall. We achieved this figure without the village of Scackleton, as unfortunately we have no resident collector for this village. For the first time we encouraged donors to use gift aid envelopes and because of this collected any extra £31.40 for the charity. Thank you for your continued support.

*Rosemary Stewart*

## Church News

Advent and Christmas Celebrations began with a concert led by the Ampleforth and Ryedale Choir at All Saints Church, Hovingham. With congregational involvement and mulled wine and mince pies being distributed at the interval, it was an event greatly enjoyed and raised over £600 towards church repairs.

The 'Carol Service' at the Worsley Arms, now in its fifth year continued to be popular. The informal atmosphere and input of the Music Group and that of the Revds Tanya Short and Martin Allwood all go to make it a happy event.

Christmas Services were as usual well attended with the Christingle attracting record numbers. Although the number of children attending remains fairly constant the number of grown-ups has greatly increased, making the service very much a family event. The 'Midnight Mass', starting at 10.30pm as a concession to the average age of those attending (after all, it is midnight in Jerusalem!) was as usual well attended.

With the coming of the new year, the usual Eucharist service was accompanied by the baptism of baby Ellie Reeves-Judson and her cousin Matilda Turner. The two youngsters were well supported by godparents' family and friends, resulting in the service having a bumper congregation.

2018 will be a difficult year being faced with the need to make a number of expensive repairs to the church and organ. Fundraising for this is ongoing, so keep a look out for our events this year. Nevertheless, as always there are some grounds for optimism in that weekly worship continues and our village school continues to have its weekly Wednesday afternoon assembly in the church.

*Eddie Lucas*

## Hovingham Market – Jingle bells all the way

As 2017 drew to a close, our two December markets were much enjoyed by visitors, stallholders and volunteers. We enjoyed dry weather which always helps and attracted a record number of stalls, offering further variety and interest.

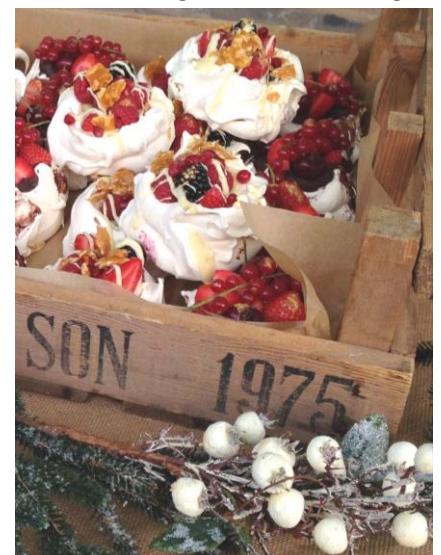
For the first time, we opened up the "South Side" of the Village Hall to locate five stalls and ease congestion. We arranged a Christmas Art Display on the external wall and this attracted much interest too.

Many children participated in the Nativity Art Trail searching for images scattered around the stalls and recording their answers on a clipboard. They were rewarded with a festive treat for their efforts. Ellie the donkey was a big hit with adults and children alike: she was well behaved and sold out of mistletoe with all proceeds going to Parkinsons UK.

We decorated the market with festive bunting and the Swinton & District Excelsior Brass Band provided Christmas carols and toe tapping festive music. All the stallholders were provided with a voucher from the market committee for a hot drink and a bacon or sausage butty, which proved very popular. The Community Café run by Hovingham Church made a record profit, with all proceeds raised going towards the roof fund. Hovingham Tennis Club operated the first market Community Café in December and they too, raised a record amount. The Yorkshire Wildlife stand generated great interest from nature lovers and the Ryedale Dog Rescue tombola was very well supported.

While our committed team of volunteers took a well-earned break in January we are very much looking forward to celebrating our special 100<sup>th</sup> market on Saturday 3<sup>rd</sup> February. Thank you for your continued support of our exceptional, local, 100% volunteer run, market.

*Murray Stewart & Caroline Davis, Hovingham Market Group*



Since taking over The Malt Shovel I've been over whelmed by the response of all the villagers that have popped in and have come back time and time again. I'd like to thank my new friends and the newer ones who come.



The Malt Shovel has enjoyed a great start in the summer and in the Christmas period this has been because of Stuart's (our chef) great, no frills, pub food, through word of mouth and online reviews with Trip Advisor etc. And also, the great service, that is provided to any and all, that walk through the door - children, walkers, k9's. Everyone is welcome.

We also have a biweekly quiz that turns up on a Friday at 8.30ish, Monday night is fish and chip night (£8.95 eat in), and Saturday is steak night (£25.95 for two with a bottle of wine) which is proving very popular and not forgetting the outstanding Sunday dinners which you really have to book for now!

One thing you won't have to book for is from the 3rd of Feb, the pub will be open every Saturday at 10am till 12.00 for free teas and coffees for the residents of Hovingham to bring a friend or a neighbour in for a morning out. You are more than welcome, although you will have to buy (well, not have to), a slice of homemade cake made by Stuart and myself with all proceeds going to charity.

Pop in and say hi. The more support we get - the better we get. **Cheers, Martin** <http://www.themaltshovelhovingham.uk>

## Farm News

Starting an article can involve some head scratching – what have I done over the last couple of months or at least what might be interesting to talk about? The winter months are fairly quiet on an arable farm but there are still things to do.

We live in a very technical world full of computers, GPS and other modern devices but just occasionally the old ways can be useful. I reverted to such methods recently when faced with a wet patch (or wet hole as it's called) in a field. The field is just below Malton road and has a dew pond at one side. These are designed to drain fields from the water that comes up through the land as well as what falls from the sky. This Autumn the area around the pond was particularly wet and the tractor and drill wasn't able to get through it leaving an area about the size of tennis court not drilled and very rutted. When the land dried enough to go over with a power harrow I levelled it out and wanted to put some seed on which would help dry it out. Still too wet to go over with a drill, I dusted down an antique device called a fiddle drill. From the picture you will see why it is called that because you make the disc spin by pushing the handle back and forth a bit like playing a fiddle. These were used many years ago before seed drills were invented mainly for sowing grass seed. I am not sure what seed rate I put on or how accurate my walking/staggering was but it did the job. Time will tell if anything grows! My workshop/museum can rival Beamish and can be viewed at half the cost!!



Talking of wet holes, I have done some drainage work on one of my fields in the last couple of weeks. As it is going into a spring crop, it was ideal to try and rectify the problem during winter so I got a chap with a digger to come for a couple of days. Maps of old field drains are non-existent so some educated guess work is involved to know what may already be there. We found an existing drain that I thought was there which meant we could dig a trench from a wet patch to join up with it. We also put a completely new drain in the length of the field. This involved tapping into the main drain under the boundary hedge and taking it 150 yards up the field. Once the trench is dug, a perforated plastic pipe is laid in the bottom, a layer of stone put on top and then the soil put back in.

January is the month when I usually go on a sprayer update course. This is run by Malton training group and allows farmers to learn about any new legislation and get advice on best practice when using pesticides. This year the focus was on water protection and the best way to prevent contamination of water courses. Although this has been part of our focus for many years, regulations change as to what water course buffer zones you need for different products.

An interesting point was mentioned regarding Glyphosate (Roundup). This has been in the news recently because it's licence was due for renewal and the EU politicians spent months debating whether to re-authorise it's use. Despite independent scientific research saying it is safe, it got very political and it just dragged on before being given the license for another 5 years. Interestingly we learnt that Fairy Liquid and household bleach is actually classed as more hazardous than Glyphosate!

Although the recent cold weather hasn't always been welcome, it is quite nice to see some proper winter weather. We will soon start to think about spring when the countryside bursts back into life.



## Rainfall - Hovingham (in mm)

	Jan	Feb	Mar	Apr	May	Jun	Jul	Aug	Sep	Oct	Nov	Dec	Total
2011	43	68	6	2	41	52	48	112	25	67	28	66	558
2012	49	16	20	148	48	102	110	76	113	97	137	122	1038
2013	57	24	52	14	83	48	26	55	57	90	55	57	620
2014	127	58	38	23	35	54	52	94	29	72	108	48	838
2015	26	20	36	21	89	15	79	67	72	71	110	151	757
2016	87	54	93	82	24	61	41	68	31	43	82	27	693
2017	32	73	44	13	43	122	55	76	91	68	57	66	740
<b>Avg</b>	<b>63</b>	<b>47</b>	<b>43</b>	<b>50</b>	<b>54</b>	<b>63</b>	<b>57</b>	<b>68</b>	<b>57</b>	<b>77</b>	<b>72</b>	<b>64</b>	<b>715</b>

\* In the end an average sort of year for rainfall 740mm, nowhere near as bad as 2012. However, there are water logged fields everywhere!!

Avg - figures calculated from 1997 to 2017

Figures reproduced with the permission of Robert Wainwright



**Hovingham Fireplaces**  
Worsley Arms Business Park,  
Hovingham, York, YO62 4LA  
Phone: 01653 628222

Fireplaces  
Multi Fuel Stoves  
Marble & Granite  
surrounds  
Gas Fires,  
Stone Fireplaces  
Granite Worktops

[www.hovinghamfireplaces.co.uk](http://www.hovinghamfireplaces.co.uk)



Beef, Lamb & Pork - Free Range Eggs - Fresh Seasonal Vegetables  
Choice of Sausages, Burgers and Sweet Cured Hams  
Fresh Turkey and Chickens Available for Christmas  
Orders taken NOW

We are only 2 miles West of Hovingham

Everything we sell is grown or  
born & reared on our farm

THE WALL, COULTON  
CORNER HOUSE FARM, COULTON, HOVINGHAM, YORK  
OPEN 24 HOURS, 7 DAYS A WEEK  
PHONE: 01347 888293 [www.thewall-coulton.co.uk](http://www.thewall-coulton.co.uk)

*The*  
**WORSLEY ARMS**  
*Hotel*  
EST. 1841

Events for you to share

**February**  
Saturday 3<sup>rd</sup> Market Day Lunch  
Wednesday 14<sup>th</sup> Special Valentine's Menu  
Saturday 17<sup>th</sup> Special Valentine's Menu  
Thursday 22<sup>nd</sup> Supper Club  
Wednesday 28<sup>th</sup> Wine Dinner 'Cellar Spring Clean'

**March**  
Saturday 3<sup>rd</sup> Market Day Lunch  
Tuesday 6<sup>th</sup> Film Night  
Sunday 11<sup>th</sup> Mothering Sunday Lunch  
Thursday 22<sup>nd</sup> Supper Club  
Saturday 24<sup>th</sup> Village Litter Pick

**April**  
Saturday 7<sup>th</sup> Market Day Lunch  
Tuesday 17<sup>th</sup> Wine Dinner celebrates  
'World Malbec Day'  
Thursday 26<sup>th</sup> Supper Club

Please visit [www.worsleyarms.co.uk](http://www.worsleyarms.co.uk) or call  
us on (01653) 628234 for further information  
about any of our special events

## THE PARK- hair, beauty and café

is family run with 30 years experience



We provide excellent hair & beauty treatments using top of  
the range organic products.

And a selection of gifts too. Pop in to see what we have to  
offer.

Gillian, Becky & Gemma, The Park, Park Street, Hovingham  
01653 628969

[info@theparkhovingham.co.uk](mailto:info@theparkhovingham.co.uk)

[www.theparkhovingham.co.uk](http://www.theparkhovingham.co.uk)

<https://www.facebook.com/Theparkhovingham/>

As at 24th January, Third Energy are waiting for the final permission to frack at Kirby Misperton from the Secretary of State, Greg Clark. It is unclear what is holding up the decision. Third Energy have failed to file its company accounts on time for the second year running. Chartered accountant Keith Cochrane who joined Third Energy's board, is also the Chief Executive at the helm of public services contractor Carillion, which has been forced into compulsory liquidation.

If fracking is given permission to go ahead at Kirby Misperton and is perceived to be successful, we can expect to see a proliferation of multiple wells across Ryedale in the next 5-10 years. So what protections are in place to prevent the known harm caused by fracking to local communities?

Every 20 years, local councils have to write new Minerals & Waste Plans for their area. After a series of consultations over the past 5 years, North Yorkshire County Council, City of York Council and the North York Moors National Park Authority have finalised their Joint Minerals and Waste Plan.

The Plan will be reviewed by a Government Planning Inspector during an 'Examination in Public' from 27th February to 23rd March at North Yorkshire County Hall, Northallerton DL7 8AH.

Tuesday 13th March is the important date when any outstanding matters, issues or questions relating to the hydrocarbons (fracking) section of the plan will be covered at the Examination in Public. The public can observe the meeting, hence Examination in Public.

An important document known as the Matters, Issues, Questions document (MIQ) is now published. This highlights the main areas that are 'contentious'. Hydrocarbons questions are covered by questions 53 to 64. This is the "go to" document for the issues and is available on the NYCC's website about the Minerals & Waste Joint Plan <https://www.northyorks.gov.uk/minerals-and-waste-joint-plan-examination>

In summary the contentious issues in the plan are:

- Separation distance of 500m from receptors (ie residential buildings, schools, care homes etc)
- Visual buffer of 3.5km around National Parks and Areas of Outstanding Beauty
- Definition of fracking
- 'Special' local landscapes. The Ryedale Local Plan Strategy must be reflected in the Minerals & Waste Joint Plan
- Cumulative impacts
- Traffic/transportation management
- Financial bonds

Local residents have made representations to the Minerals & Waste Joint Plan to ensure the plan provides adequate yet robust protections to our existing communities and businesses from the recognised adverse and cumulative effects of this industrial development. For example, the industry wants to use a definition of fracking, which would mean fewer fracks are classified as fracks. The industry's preferred definition of a frack is one using more than 1000m<sup>3</sup> of water. Concerned residents consider that 'a frack is a frack'. The impacts on local residents, businesses, the environment and the industrialisation of the landscape are significant, irrespective of any arbitrary volume.

Once the inspector finally approves the plan, it will form a blueprint for other planning authorities across the UK as it will be the first such plan to go through this process since fracking came to the UK.

In January, Ryedale District Council voted against procuring consultant expertise to ensure the Minerals & Waste Joint Plan is robust enough to protect the communities they serve. <https://drillordrop.com/2018/01/11/ryedale-residents-wait-in-the-dark-as-councillors-reject-expert-help-on-setting-fracking-strategy/> Local residents have set up a fundraising campaign <https://www.gofundme.com/Prevent-fracking-spread> to defend the representations made to the Minerals & Waste Joint Plan. This will not only go some way towards protecting communities impacted by fracking in North Yorkshire but it will also support all communities across England living with the threat of fracking.

Hovingham is currently in the Petroleum Exploration Development License area owned by Third Energy. A multinational chemicals company, INEOS are planning to frack in the areas surrounding Hovingham. INEOS plan to use the gas they find to make plastics. A series of talks are planned in Strensall, Westow, Norton, Helmsley, Sledmere, Pickering and Kilham in February 2018.

*Caroline Davis*

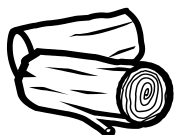
### Hovingham Estate [www.hovingham.co.uk](http://www.hovingham.co.uk) – Monday to Friday 8.30am to 4.00pm

**Residential property** - The Estate has residential property to rent, ranging from 2 bedrooms to 5 bedrooms, all situated within the village. **Contact:** The Estate Office on 01653 628771

**Logs for sale** - The Estate sell logs in varying load sizes which can be delivered within 1 mile of Hovingham Village. **Contact:** David Teasdale on 01653 628037

Please note due to harvest logs cannot be delivered during the months of August and September.

**Holiday Cottage** – Spa Cottage; is an attractive 3 bedroom, 2 bathroom cottage that sleeps 6 in comfort. For bookings please contact Rural Retreats at [www.ruralretreats.co.uk](http://www.ruralretreats.co.uk) or telephone 01386 701177







# Hovingham Village Market Celebrating 100 Markets



## About the Market

- ◆ Setup following support from the Hovingham Community Plan of 2008-2009 and run totally by volunteers.
- ◆ The previous Hovingham Market established in 1252 by the charter of King Henry III was closed in 1854 when the steam railway arrived in Hovingham.
- ◆ The objective of our Local Monthly Market is to champion local produce and crafts, provide Local Community Groups with the valuable opportunity to meet residents in a friendly and safe environment.
- ◆ The Market continues to be very successful, and sustainable, and provides for the immediate Ryedale area, plus welcomes visitors from North Yorkshire, York and further afield.
- ◆ Since 2009 the Market has achieved Local and National recognition; winning 9 awards culminating in the prestigious Duke of York's Community Initiative Award.

## Our Volunteers

- ◆ None of this would be possible without our wonderful team of volunteers; which together with our Community Cafés involves over 100 volunteers.
- ◆ Every month they help plan each Market, organise Stallholders, setup and takedown the Market, welcome and help visitors, all the administration and much more.



### Volunteer Team aka Rogues Gallery



## Community Benefits

- More than 50 Local Community Groups have participated at the Market by either running a Stall or the Café and raised over £98,000 since October 2009.
- More than £25,000 donated to Community Projects, including the Playground, Website and Newsletter.
- The Market provides a valuable social hub where residents of all ages to meet, chat and shop.



# Stallholders



- ◆ The Market started with 20 stalls and now has 58 both indoors and out, selling food and crafts.
- ◆ We champion local produce and products from local businesses, with 200+ stallholders since 2009.
- ◆ There are several examples of start-up businesses which have expanded significantly after running a stall at the Market; some now have their own successful shop and run internet based businesses.
- ◆ Some of our "Pioneer" Stallholders have been with us since the beginning:

*Awo2 Honey*

*Flamingo Paperie*

*Haxby Bakehouse*

*Richard Wood*

*Ryedale Cheeses*

*Staal Smokehouse*

*The Wall @ Coulton*

*Thundercliffes*

*White Cottage Bakery Yorkshire Rapeseed Oil*



## Partners

Thank You to our Local Partners who have encouraged and supported the Market and help make it a continued success:

- Community Café Operators
- Handy Mag & GO Local Magazines
- Henry Johnson and his team
- Hovingham Bakery
- Hovingham Estate
- Hovingham Malt Shovel
- Hovingham Newsletter
- Hovingham Parish Council
- Hovingham Village Hall
- Jack the Sax & Josh our Busker
- North Yorkshire County Council
- Ryedale District Council
- Swinton Excelsior Band
- The Wall @ Coulton
- Worsley Arms Hotel



## Visitors

- They come from local villages and towns in Ryedale, North Yorkshire and further afield
- Most attend regularly with the Market part of their Shopping Adventure
- Over 800 visitors receive our monthly Market Newsletter which is also available to read on the website



[www.hovingham-market.org.uk](http://www.hovingham-market.org.uk)

## Thank You

The Market is successful due to all its Visitors, Stallholders, Volunteers, Partners and the Local Community who have supported it since 2009; a very BIG thank you to everyone.



## 10 “WINTER” – a performance held in Hovingham on 25<sup>th</sup> November

About 12 months ago two friends met up for coffee. This wasn't just to catch up with each other but to put some flesh on the bones of an idea which had captured their imaginations. Both of them shared a passion for writing, performance and music – Libby Pearson, playwright and director with *Me & Thee Theatre* and Brenda Stott, who wrote short stories for her own amusement and enjoyment. A collaborative performance with folk bands *Malarkey* and *The Fine Companions* joining forces with *Me & Thee Theatre* celebrating winter was agreed. It wouldn't be about Christmas and whilst music would be a prominent feature, it wasn't to be a musical. Having decided what it *wouldn't* be, the challenge was to establish what it *would* portray.

Over the following weeks, lots more coffee and the odd glass of wine, the excitement built as ideas were suggested, discussed, rejected and re-visited and slowly the format for the performance emerged: it was to be a celebration of the winter season expressed through poetry, stories and music, exploring the mystery as the days shortened and turned chilly and frosty and we headed towards our main winter celebration. The production would encapsulate both the cosy candlelit and fireside image of winter, yet also to explore the darker side of the season.

As spring appeared on the horizon we were all immersed researching poetry and folk music. The specifically written modern fairy tale of Sam North, a boy worn down by cares looking after his ailing Pa and who desperately wished to visit an Ice Hotel was drafted and editing and re-writes were underway. Spring slid into summer and whilst barbeques were being lit outside, the actors and musicians were busy rehearsing inside but no pressure, winter was still far away.

Suddenly Halloween and Bonfire Night were upon us and then on the 25<sup>th</sup> November, (an obligingly cold and frosty night), the audience gathered in Hovingham Village Hall to hear the legend from Icelandic Folklore relating the sinister and strange antics of *Jólakötturinn*, the Yule Cat, who spends Yule Eve searching through the snow on the look-out for a bizarre kind of prey, namely children who hadn't received any new clothes for Yuletide! The legend, the story and poetry of Boris Pasternak were all brought to life with musical accompaniment from the bands. The hall was beautifully decorated with winter foliage, candles flickered and glasses of mulled wine spread warmth and comfort. Feedback from the audience was very positive and, most importantly, £175 was raised for Ryedale Special Families.

If you would like to see more productions from Me & Thee Theatre please visit <http://www.meandtheetheatre.com>. Members of The Fine Companions and Malarkey folk bands are usually to be found at the evening folk session held on the first Sunday of the month at The Grapes, Slingsby. Both bands are available for parties and functions and can be contacted on: Glenn Stott, The Fine Companions, 01653 690212 Paddy Morrow, Malarkey, 01653 628658

Malarkey are performing an Irish Folk Night to celebrate St Patrick's Day on Saturday 17<sup>th</sup> March at Slingsby Village Hall. Please contact Paddy for further details.

**Brenda Stott**

## Ryedale Community Transport – affordable transport

We are a registered charity with a role to provide affordable transport for people without their own transport and who live in rural areas without any public transport. We provide transport for medical appointments, shopping, groups attending meetings and other activities and we have a range of services which fit these needs.

The **Volunteer Car Scheme** has registered volunteer drivers, all of which are approved by RCT and fully DBS checked. They give their time freely to transport people to destinations which typically include York, Scarborough and Malton Hospitals as well as Pickering and Malton shops and surgeries but are paid a mileage allowance of 45 pence per mile (door to door) to cover their own cars' operating costs. The drivers often speak of the experience as being enjoyable and rewarding, meeting a variety of people from all walks of life. In the last year we have covered some 7,000 journeys to hospital and other appointments in the area.



The **Ring and Ride Scheme** - a small minibus with wheelchair access which can be booked. It normally picks up three or four people at a time which helps to keep the cost down for passengers.

The **Wheels to Work Scheme** - provides affordable moped hire to people needing transport to get into a job or training. Typically, people use the service for 6 months as they start a job and until they are able to afford their own car or moped.

The **Minibus Service**- 16-seat minibuses with wheelchair access at affordable rates to organisations and clubs throughout the area. The buses take people to meetings and social events, making a large contribution to reducing rural isolation.

We are always in need of more volunteers, especially for our 'in demand' Volunteer Car Scheme. If you would like to become a volunteer, please contact us on **01653 699059**.

If you would like to become a member of Ryedale Community Transport to take advantage of the Car Scheme, please telephone **01653 699059**.

More information is available about us at [www.ryedalect.org](http://www.ryedalect.org) and you can also follow us on Facebook. **Roger Gibbeson**



Good question!! But unfortunately, there is no easy answer. Hovingham Action Group, in the last bad winter of 2010/1, took upon itself to set up a snow policy for the village which would devise priority pavements to clear if there were substantial falls of snow. In 2010 it snowed 11 days running and we had temperatures of -16. I just hope we don't get that again as we are older and less fit than we were then!

There are many layers in the snow clearing policy but it all comes down, as usual, to willing volunteers. Firstly, a decision needs to be made whether the snow should be cleared? Various scenarios could occur such as will it disappear quickly or remain and freeze (like the current snowfall). Or will there be more?

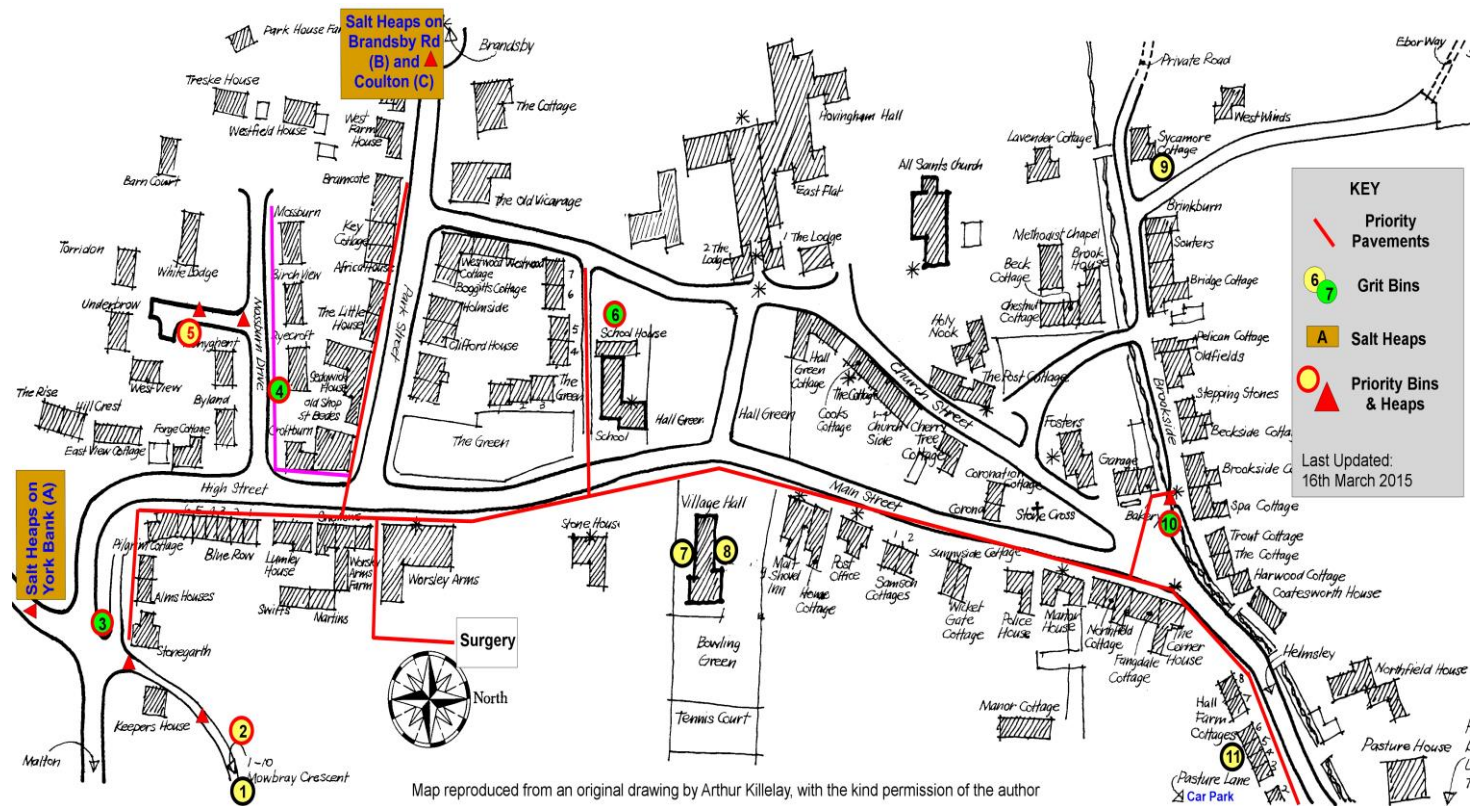
Once a decision is made to clear the snow a call out list is employed to get in touch with the stalwarts who have put their names forward to be contacted when substantial snow arrives. The optimum period before volunteers collapse with exhaustion is around 1 hour, slightly longer if need be. Because it is not possible to clear all the footpaths in the village and what is cleared is down to the number of volunteers who turn out, a list of priority footpaths/areas were designated and these are

1. Pathway adjacent to the School & Housing Association Properties.
2. One side of High/Main Street (Mowbray Crescent to Pasture Lane)
3. One side of Park Street
4. One side of Mossburn Drive.
5. One side of Pasture Lane.

Also, if necessary Priority roads will be cleared - Mossburn Drive, Pasture Lane, Beckside and Church Street by Hovingham Estate and Mark Wilson with their tractors.

In total there are 17 names on the volunteer list, but of course not all can turn out because of other commitments or illness (and age!!) The main purpose of the snow clearing policy is to allow access to facilities in the village and to minimise the risk of injuries with falls etc.

In Hovingham we also have numerous grit bins located in strategic places. Residents are welcome to use the grit as and when necessary. In 2010/1 we used approx 27 cwt of grit. The grit is purchased by the Parish Council. Residents should be aware of the situation of their nearest grit bin.



To conclude, the latest snowfall caused a good amount of heavy snow, but this had ice under where people had walked. It took a lot of clearing, but only 9 volunteers were available so it wasn't possible to cover all the priority paths. This will have been seen by the cleared path on High/Main Street only going in one direction and finishing outside the shop. So it greatly depends on the number of people willing and able to come out and clear snow. Equipment will be provided, but the more volunteers the happier everyone will be. Action Group volunteers are not responsible for clearing the paths, they come out voluntary to help.' It's in everyone's interest to do their bit, as Tesco say, "every little helps".'

**David Richardson, Action Group Chairman**

**EDWARD HUTCHINSON**

was the only son of George and Elizabeth Hutchinson of Hovingham.

He and his father worked on the Hovingham Estate. He was with the 10<sup>th</sup> Battalion the Yorkshire Regiment and was killed in France on 28 September 1915, aged 21, at the Battle of Loos, just days after his arrival in France.

He was one of the 10th Green Howards' 300 casualties at Loos.

**Battle of Loos -The Beginning – 25<sup>th</sup> September 1915**

In many places British artillery had failed to cut the German wire in advance of the planned attack. So, when advancing over open fields, within range of German machine guns and artillery, British losses were devastating. The British broke through the weaker German defences in places and captured the town of Loos-en-Gohelle, but with supply and communications problems, combined with the late arrival of reserves, the breakthrough could not be exploited.

**26–28<sup>th</sup> September**

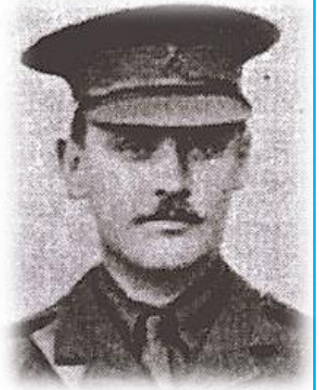
The following day, the Germans had improved their defensive positions and British attempts to continue the advance with their reserves were repulsed. Twelve attacking battalions suffered 8,000 casualties out of 10,000 men in four hours. A lull fell on 28 September, with the British having retreated to their starting positions, having lost over 20,000 casualties, including three major-generals and Edward Hutchinson of Hovingham.

**FRANCIS PEMBERTON**

was a regular soldier, and captain in the 2nd Life Guards.

Born in Gilling East to Canon Thomas and Patience Pemberton, he married Winifred Mary Worsley in Hovingham Church in 1912.

He was killed, aged 29, in Belgium at the First Battle of Ypres on 19<sup>th</sup> Oct 1914 – the first day of the battle, just 13 days after his arrival.

**The First Battle of Ypres, (being the 1<sup>st</sup> of 5 stages).**

It was an indecisive encounter battle from 19 to 21 October before the real battle began, the British Expeditionary Force (BEF) retreated to Ypres after Antwerp fell to bolster the Belgian and French defence. On the 19th they were ordered to advance and seize the city of Menin. The advance began at 06.30 hrs and initially went well with the first objectives gained. However, reports were received that the German Imperial Army had reinforced the front and Major General Capper ordered his Brigades to retire and re-establish the defensive line. One of those failing to retire to that defensive line was Captain Francis Pemberton of Hovingham. The further 4 stages of Ypres continued from 21<sup>st</sup> October until 22<sup>nd</sup> November 1914 when winter weather forced a halt with both sides digging in and constructing the elaborate trench systems that would characterise the front for the remainder of the war.

**Welcomes You!**

Great local well-priced home-cooked food and a great selection of beers, wines and an array of the soft ones, there's something for everyone.

Walkers, K9's, Everyone is welcome  
Open 12 till 3 and 5 till 11 Weekdays  
All day Saturday and Sunday!

Just check out our website  
[www.themaltshovelhovingham.uk](http://www.themaltshovelhovingham.uk)

**HOVINGHAM STORES**

NEWS PAPERS - WINES & SPIRITS - FRUIT & VEG - LOCAL MEATS & PRODUCE - CIGARETTES

We would like to introduce our sister business

Malton Road, Swinton, Malton  
YO17 6SQ Phone: 01653694033

[www.smithyarms.co.uk](http://www.smithyarms.co.uk)

Traditional Country Pub serving  
great food & drink 7 days a week

With SKY/BT Sports and Pool Table



**HOVINGHAM**  
**Village Market**  
Celebrating 100 Markets

• Fresh • Local • Seasonal • Community • Market •



The Village Hall management team is pleased to report that things are coming together at last and generally we are now moving in a good forward direction. We've just had a successful AGM, which included the final formal adoption of the new Constitution. It will now be sent to the Charity Commission for their acceptance and lodged with our Charity registration status. It's been a long time in the creation but we are very grateful to everyone who has contributed to its development. This Constitution will enable us to put together an induction pack for new members of the management committee and there will be new documentation for the bookings secretary, village hall rules, user feedback forms and so on.

We are planning on starting new repairs and redecorations inside and outside so we will see the roof repaired, stopping the dampness in the hall, the windows repaired and repainted and those of you who have been out and about recently will have seen the boundary wall to the road being restored and made safe.

We also plan to make the hall more of a community base attracting plenty of different activities so it gets well used. We want the improvements and modernisations to make our Village Hall an attractive and sustainable place for functions and activities in the foreseeable future.

If anybody is interested in becoming a member of the management team within the new structure, Wendy Dawson, our Secretary, would be delighted to hear from you – Tel: (01653) 628296. *Richard Senior*



## Home too small to entertain?

There's a LOT more space at our place!

## Hovingham Village Hall

Call Janice on 01653 628952 or visit [www.hovingham.org.uk](http://www.hovingham.org.uk)

## The Hovingham Bakery

**New Ownership**  
**Simon Kelly & Victoria Lundborg**

### OPENING TIMES

Monday	--- closed ---
Tuesday	--- closed ---
Wednesday	8.30am – 4pm
Thursday	8.30am – 4pm
Friday	8.30am – 4pm
Saturday	8.30am – 4pm
Sunday	9.30am – 4pm

Find us on: **facebook**

[www.facebook.com/hovinghamrollingpin](http://www.facebook.com/hovinghamrollingpin)

Telephone: **01653 628898**

Website: [www.hovinghambakery.co.uk](http://www.hovinghambakery.co.uk)



**Market** - contact [Peter Stark or Caroline Davis](#)

- The November market had good visitor numbers. The two December Christmas markets were also well attended. Both final markets of a successful 2017 season for the Market Group had The Swinton & District Brass Band in attendance and a great Christmas spirit was generated. Thanks as always to everyone in 2017 who gave time and effort in setting up and running the market.
- Community Groups wanting to run a Community Stall should contact the Market Group.
- Market News is published prior to every Market; subscribe via the website to receive a copy by email.
- **We welcome regular/occasional volunteers to help with the many tasks involved in making this such a successful enterprise.**

**Environment and Wildlife** - contact [Ann Chapman or David Richardson](#)

- Whenever we get significant snowfalls in the village the Action Group snow shifting team will clear snow from priority footpaths. **Please get in touch if you can help, as and when snow arrives.**
- Join us on the **Annual Litter Pick** as part of the Great British Spring Clean – see Page 2 of this Newsletter for details

**Playground** - contact [Ann Chapman, Carol Battersby, Rosemary Stewart or David Richardson](#)

- Although it's the quieter winter period the Playground continues to require regular attention. Weekly checks continue throughout the year so that standards remain high. We rely on volunteers for this, so many thanks to those who contribute valuable time.
- **Please contact us if you would like to be involved in the various initiatives that take place. Donations, however small, are always greatly appreciated.**

**Neighbourhood Watch** - contact [Phil Chapman or David Richardson](#)

- Garden items have been stolen from outside properties, please keep eyes and ears open for any suspicious activity within the village.
- **You can subscribe to regular Neighbourhood Watch email alerts by subscribing on the Village Website.**

**Newsletter** - contact [Ann Chapman, Caroline Davis or newsletter@hovingham.org.uk](#)

- The newsletter continues to be an excellent source of local information, news and comment and is delivered to every house in the village. The editorial team welcome all articles sent in.
- Colour copies are available on the Village Website and you can subscribe to also receive copies by email.
- **Please contact us if you would like to help write, edit or distribute the Village Newsletter.**

**Website** – [www.hovingham.org.uk](http://www.hovingham.org.uk) contact [action@hovingham.org.uk](mailto:action@hovingham.org.uk)

- To receive the Weekly Village Diary by email, subscribe via the village website.
- Details of events of interest to residents are welcomed for inclusion in the Village Diary and the website.  
Email [events@hovingham.org.uk](mailto:events@hovingham.org.uk) with details.

**Project Purple** - contact: [purple@hovingham.org.uk](mailto:purple@hovingham.org.uk)

- Ann & Phil Chapman, Caroline Davis, Monica Gripaios, Kim & Frank Colenso are taking forward this community project and will explore opportunities around renewable energy, recycling and energy efficiency. A survey of residents and local businesses is planned to engage, inform and shape this project. If you would like to be involved or want to contact the group please email: [purple@hovingham.org.uk](mailto:purple@hovingham.org.uk)

**Volunteering** - contact [Ann Chapman, Caroline Davis or David Richardson](#)

- The Action Group welcomes new volunteers. If you would like to help, just for an hour or so, to enable Hovingham to remain a special place to live please get in touch. Contact any of the groups directly or via an email to [action@hovingham.org.uk](mailto:action@hovingham.org.uk)
- And, a big thank you to all our wonderful volunteers, none of this would be possible without you. Take a bow ....



**Thanks  
to Our  
Volunteers!**

*David Richardson*



## GENERAL

**Annual Parish Meeting** – It was decided that the Annual Parish Meeting would be held prior to the meeting on 14<sup>th</sup> March.

### Hovingham & Scackleton Remembers the 1918 Armistice

It has been proposed that the Communities should remember the occasion on 11<sup>th</sup> November 2018. Community Groups and residents are invited to working group meeting on 15<sup>th</sup> February 2018 at 7pm.

**100<sup>th</sup> Hovingham Market** – This will be celebrated with 58 stalls on 3<sup>rd</sup> February. Extra roadside banners and local media will publicise the event.

**Ryedale Local Plan** – The consultation has finished and it is unlikely there are any developments in either village.

**Village Hall Constitution** – The Parish Council are happy with the current proposed version which retains the obligations included in the 1930 Conveyance.

**Village Hall Car Park Wall** – Work is expected to commence on 12<sup>th</sup> January; the old stone will be stored at the Worsley Arms farm. NYCC Highways will be contacted regarding the condition of the public footpath at the entrance. Work has been scheduled to repair the main road outside Stone House.

**Winter Salt and Grit** – Four bags have been delivered by NYCC; the Hovingham bins have been replenished and one bag is to be collected for Scackleton residents.

## SCACKLETON

**Action Group** – They have agreed to purchase a seat in memory of Gordon Hickes and Frank Edwards; the Parish Council will make a contribution. A proposal to light the church was discussed; views are mixed. The AGM is scheduled for 7pm on 5<sup>th</sup> February.

**No HGV Signs** – Proposal has been rejected by Scackleton residents.

**Verge Cutting** – It was agreed that Scackleton Councillors would schedule cutting of grass verges in Scackleton next year; the Parish Council would finance and negotiate settlement at the end of each season.

## NYCC Councillor – Mrs C. Goodrick

**Budget** setting has been taking place and all areas of expenditure were under review. **Health and Social Care** and **Home to School Transport** are currently under the spotlight. Disappointment expressed that she was not made aware of A64 coroners report of accidental death. A meeting has been arranged with MP Kevin Hollinrake. The junction at Scotchman Lane has been assessed and some bollards removed; the alterations to this junction were unsatisfactory. Councillors agreed the constant speed monitoring in Flaxton was questionable.

## HOVINGHAM

**Action Group** A report is available on website.

**Community Speedwatch** – Application has been accepted and survey carried out. Volunteers have come forward and training scheduled for 1<sup>st</sup> February.

**Flooding** – Recent rise in water levels had not triggered call from Environment Agency.

**Pasture Lane** – Resurfacing scheduled for 1<sup>st</sup> week of February.

**Project Purple** – Group has been formed to promote renewable energy, energy efficiency and recycling. The AONB has provided a grant for the group to carry out a questionnaire among Hovingham residents. The group will be seeking views on solar panels.

**Trees** – Quotes are still awaited.

**Village Seats** – Three new seats will be purchased from Duncombe Sawmill before Easter. A plaque will be ordered for the Scackleton seat.

## FINANCE

**Report** copies of the latest accounts have been circulated to all members and are available on website.

**It was agreed;** the precept will remain at £6,017 for next year; £300 will be spent on new seats; £45 for new grass mats on Top Green by school pedestrian entrance; £50 donation to the CAB

## Ryedale District Councillor Mr R. Wainwright

**Budget** meeting has taken place and there will be a 2.7% rise in Council Tax which is equivalent to £5 on a Band D property, 9.6p a week.

The Government Grant has been reduced so savings are to be made. Monies will be taken out of the New Homes Bonus to help balance the books.

## 2018 PARISH COUNCIL MEETINGS

Meetings start at 7pm in the Hovingham Community Room, except the July meeting which is in Scackleton Church

- Hovingham Annual Parish Meeting on 14<sup>th</sup> March followed by Parish Council Meeting
- Annual Meeting of Parish Council on 9<sup>th</sup> May
- Scackleton Annual Parish Meeting on 25<sup>th</sup> July (St. George's Church Scackleton)
- Parish Council Meetings on 12<sup>th</sup> September and 14<sup>th</sup> November

All are very welcome, full details are on the website



## February 2018

3 <sup>rd</sup> Sat	<b>100<sup>th</sup> Hovingham Village Market - 10:30<sup>am</sup> to 1:30<sup>pm</sup></b> - Village Hall Please come along and support your 100 <sup>th</sup> Market; Hovingham Action Group will be running the Community Café. This will be our 100 <sup>th</sup> Market since the first one of the modern era on 3 <sup>rd</sup> October 2009; thank you to everyone who has made it possible and has supported this Community venture which has raised more than £98,000 for local Community Groups; <b>A big THANK YOU</b>	
4 <sup>th</sup> Sun	<b>Hovingham Matins 10:30<sup>am</sup></b> All Saints' Church	<b>Methodist 10:30<sup>am</sup></b> Chapel T Short -Holy Communion
5 <sup>th</sup> Mon	<b>Landfill Waste Collection - Green Bin</b>	<b>Supermobile Library 5<sup>pm</sup> until 7<sup>pm</sup></b>
6 <sup>th</sup> Tue	<b>Hovingham Women's Fellowship 7<sup>pm</sup></b> Home of Maureen Lucas-Talk by Rev Tanya Short of Malton	
8 <sup>th</sup> Thu	<b>Hovingham Tea Spot - 10:30<sup>am</sup> to 11:30<sup>am</sup></b> Rolling Pin Tearoom Join us on the 2nd Thursday of each month for a cuppa, chat and company. Organised by Hovingham Methodist Chapel, with the kind permission of the Rolling Pin Tearoom. If you need transport please call Louise (628064) or Sue (628077) and we will pick you up. All ages welcome.	
9 <sup>th</sup> Fri	<b>Casino Night</b> - Organised by Hovingham Cricket Club - <b>7<sup>pm</sup></b> - Village Hall <b>Dress Code:</b> Black Tie/Secret Agent, Glittering/Glamorous <b>On the night:</b> Extra Casino Chips; Raffle; Paying Bar; <b>Tickets:</b> £12.50/ticket includes glass of prosecco, canapes and casino chips	
11 <sup>th</sup> Sun	<b>Eucharist with Baptism 10:30<sup>am</sup></b> All Saints' Church	<b>Methodist Service 10:30<sup>am</sup></b> Chapel-K Gowland
12 <sup>th</sup> Mon	<b>Recycling Collection</b> - Recycling Bins	
15 <sup>th</sup> Thu	<b>Remembering the 1918 Armistice - 7<sup>pm</sup></b> - Hovingham Community Room All welcome to this working group to help Hovingham and Scackleton remember the centenary	
18 <sup>th</sup> Sun	<b>Morning Praise 10:30<sup>am</sup></b> All Saints'	<b>Methodist 10:30<sup>am</sup></b> Rev. Tony de Boltz
19 <sup>th</sup> Mon	<b>Landfill Waste Collection - Green Bin</b>	<b>Supermobile Library 5<sup>pm</sup> until 7<sup>pm</sup></b>
25 <sup>th</sup> Sun	<b>Benefice Eucharist 10:30<sup>am</sup></b> Barton	<b>Methodist 10:30<sup>am</sup></b> Chapel-M Graham
26 <sup>th</sup> Mon	<b>Benefice Sunday Lunch 1<sup>pm</sup></b> Cresswell Arms, Appleton le Street - Tickets £10/£15 for main course followed by pudding/cheese, depends on numbers. Contact Colleen-690913 or Daphne-628868; lifts available	
26 <sup>th</sup> Mon	<b>Recycling Collection</b> - Recycling Bins	

## March 2018

2 <sup>nd</sup> Fri	<b>Women's World Day of Prayer - 2<sup>pm</sup></b> - All Saints' Church Terrington - Rev. Morgan will perform the service prepared by Christian Women of Suriname; Contact Sue Goodwill if lifts needed	
3 <sup>rd</sup> Sat	<b>Hovingham Village Market - 10:30<sup>am</sup> to 1:30<sup>pm</sup></b> - Village Hall Please come along and support your Market; The Hovingham Chapel will be running the Community Café.	
4 <sup>th</sup> Sun	<b>BCP Eucharist- 10:30<sup>am</sup></b> All Saints'	<b>Methodist 10:30<sup>am</sup></b> Chapel
5 <sup>th</sup> Mon	<b>Landfill Waste Collection - Green Bin</b>	<b>Supermobile Library 5<sup>pm</sup> until 7<sup>pm</sup></b>
6 <sup>th</sup> Tue	<b>Hovingham Women's Fellowship 7<sup>pm</sup></b> - Village Hall Talk about Camphill Trust of Malton, supporting adults with learning difficulties	
8 <sup>th</sup> Thu	<b>Hovingham Tea Spot - 10:30<sup>am</sup> to 11:30<sup>am</sup></b> - Rolling Pin Tearoom Join us on the 2nd Thursday of each month for a cuppa, chat and company. Organised by Hovingham Methodist Chapel, with the kind permission of the Rolling Pin Tearoom. If you need transport please call Louise (628064) or Sue (628077) and we will pick you up. All ages welcome.	
11 <sup>th</sup> Sun	<b>Hovingham Chapel Mothering Sunday Service - 10:30<sup>am</sup></b> - Hovingham Chapel	
12 <sup>th</sup> Mon	<b>Recycling Collection</b> - Recycling Bins	
13 <sup>th</sup> Tue	<b>Garden Compost Collection</b> - Brown Bin for those subscribing to RDC service	
14 <sup>th</sup> Wed	<b>Annual Parish Meeting 7<sup>pm</sup></b> Hovingham Community Room All welcome to this annual meeting; followed by the Parish Council Meeting	
18 <sup>th</sup> Sun	<b>Benefice Eucharist 10:30<sup>am</sup></b> Slingsby	<b>Methodist 10:30<sup>am</sup></b> Chapel-B Nicholson
19 <sup>th</sup> Mon	<b>Landfill Waste Collection - Green Bin</b>	<b>Supermobile Library 5<sup>pm</sup> until 7<sup>pm</sup></b>
24 <sup>th</sup> Sat	<b>Hovingham Litter Hunt 10<sup>am</sup></b> Starting at the Worsley Arms Hotel Please join us for this annual litter pick; we will provide rubbish sacks, gloves and safety vests; litter pickers available; Children and Adults are welcome. Complimentary 'Coffee & Cakes' at end, thanks again to Sally & Tony Finn for their generosity. Please contact David Richardson (628 227) or <a href="mailto:action@hovingham.org.uk">action@hovingham.org.uk</a> for further details.	
25 <sup>th</sup> Sun	<b>Slingsby Palm Procession 10:30<sup>am</sup></b> Start Slingsby Church and end at the Slingsby Chapel	<b>Methodist Service 10:30<sup>am</sup></b> Chapel M Graham
26 <sup>th</sup> Mon	<b>Recycling Collection</b> - Recycling Bins	
27 <sup>th</sup> Tue	<b>Garden Compost Collection - RETURNS for 2018</b> - Brown Bin	

## These Events normally take place weekly (except bank holidays)

Mon	<b>Stretch &amp; Flow Class - 11:15<sup>am</sup>-12<sup>noon</sup></b> Village Hall - Aimed at all abilities; Please contact Katie Mae Ellis (07515) 406097 or <a href="mailto:katie_mae3@hotmail.co.uk">katie_mae3@hotmail.co.uk</a> for further details	
	<b>Hatha Yoga 6<sup>pm</sup>-7<sup>pm</sup></b> -Village Hall-for all ages, abilities & flexibilities! £8 each or £35 for 5. Mats provided & booking essential. Contact Verity (07821) 588117 <a href="mailto:vez_4@hotmail.com">vez_4@hotmail.com</a> for further details <b>Pregnancy Yoga Classes now available</b>	
Tue	<b>Hovingham Primary Tennis After School Club (except School Hols) 3:45<sup>pm</sup>-4:45<sup>pm</sup></b> <b>Scrumptious Fish &amp; Chip Van - 5:35<sup>pm</sup></b> Hall Green, opposite Village Hall	
Thu	<b>Ryedale Family History Group - 10<sup>am</sup> to 3<sup>pm</sup></b> - Community Room Drop in any time; Further details available from <a href="http://www.ryedalefamilyhistory.org">www.ryedalefamilyhistory.org</a>	
Fri	<b>Pilates Class - 10:45<sup>am</sup></b> for one hour - Village Hall run by Tracey Prest - All Welcome; Further details available at <a href="http://www.pilateswithtracey.co.uk">www.pilateswithtracey.co.uk</a> or (07789)-990261	

Newsletter copy deadline March 23<sup>rd</sup>  
[newsletter@Hovingham.org.uk](mailto:newsletter@Hovingham.org.uk)