

The Hovingham and Scackleton Newsletter

December 2018

Welcome to the Hovingham and Scackleton Newsletter

As always, we have lots for you; firstly, we have the Christmas activities list -why not give the Christingle Service a try on 24th December – all those Christmas carols and candles and children – just the thing to put you in the mood for Christmas day. Don't forget the two markets providing seasonal, local and tempting produce with an oompah-pah and a ho-ho-ho!

There's advice on winter snow clearing and flooding and news on fund raising and previous events and 'thank-yous' abound to all those wonderful volunteers in Hovingham and Scackleton that make all the wheels turn.

We hope this is a season of hope and happy thoughts for Christmas past, Christmas present and Christmas future.

Blessings to everyone from Your Newsletter team.

Keep those stories coming to newsletter@hovingham.org.uk - Next edition copy deadline is 20th January 2019

It's Christmas Time

Hovingham Christmas Market

Saturday
1st December
from 10.30am



Lion's Club Santa's Sleigh

Saturday 1st December 4pm –
Hovingham



Hovingham School Christmas Fair

Wednesday 5th December
3:30pm to 6:30pm
Village Hall



Carol Concert

Hovingham Church
Saturday 8th December
at 5pm



Carol Service

Scackleton Church
Sunday 9th December
3pm



Hovingham Christmas Market

Saturday
15th December
from 10.30am



Carol Service

at the Worsley Arms
Sunday 16th December
6.30pm



Christmas Church Services

Sunday 23rd December – 10.30am Hovingham Chapel Carol Service

Christmas Eve – Monday 24th December

✚ **Christingle** - 4.00pm at All Saints' Hovingham

✚ **Benefice Eucharist** - 10.00pm at Slingsby Church

Christmas Day Eucharist - Tuesday 25th December

10.30am at All Saints' Hovingham

All are very welcome at these services – the more the merrier!



Contact: newsletter@hovingham.org.uk or (01653)-628364

Published and © 2018 by The Hovingham & Scackleton Newsletter Group. Views are not necessarily those of Group or Parish Council

Hovingham Village Survey 2018 – the latest



An enormous THANK YOU to all Hovingham residents that filled in the Household, Personal and Enterprise Questionnaires. Early figures suggest another outstanding response of over 80% (final figures to be advised) - so we will be able to use the results with confidence.

Currently the paper Questionnaires are with Community First being input into a spreadsheet and then, as we promised, they will be recycled, thus completing the recycling circle. Following our receipt of the spreadsheet, Project Purple Team will analyse the results and hope in February March to have the results for you.

And, a special thank you to our volunteers who tested the Questionnaires and our wonderful team of 18 Distributors who knocked on doors, dropped off Questionnaires and collected them again, we couldn't have done it without you.

Hovingham Action Group's Project Purple team (Kim, Frank, Caroline, Monica and Ann)

Recycle your 'real' Christmas Trees for a 'greener' Christmas

Please bring your **real** Christmas Trees (up to 6" (15cm) diameter, to the **seating area in the Village Hall**

Car Park, after 7th and before 13th January 2019.

Your trees will be chipped and used in a way friendly to our environment.

Organised by Hovingham Project Purple



Hovingham and Scackleton Newsletter goes greener

We hope you enjoy this Christmas Newsletter and we are happy to say that we are going greener.

Following the example set by the 2018 Community Survey, this newsletter is now printed on 'unbleached recycled' paper. We are grateful for the support of our printers and advisors' inc-dot.com' of York who were very happy to offer their expertise and reassurance on the use of this paper.

We hope you approve of this small step in making our Community greener.

And watch for more green news in 2019 from the Village Market

The Newsletter Team

Hovingham Church Fund Raising

As some of you will be aware the steeple jacks have been on the Church roof and tower doing the necessary repairs replacing the lead and the guttering etc, this has taken almost all of the money we have raised over the last six years, about £30,000, we still need to raise the same amount again for the next phase of Church repairs including the bells and the organ.

The Church Council (PCC) would like to thank everyone who has supported us raising the money and all those who have helped at all the events.

Jackie and Graham Mason

Our next fundraising event:

CONCERT OF MUSIC FOR ADVENT AND CHRISTMAS WITH CAROLS & AUDIENCE PARTICIPATION

SATURDAY 8TH DECEMBER 5^{PM}

ALL SAINTS CHURCH HOVINGHAM

AMPLEFORTH AND RYEDALE CONCERT CHOIR

TICKETS £10 [CHILDREN UNDER 16YRS FREE]

**Ticket includes mulled wine and mince pies
Tickets from village shop or call 01653 628386**

In aid of All Saints' Church repair fund



We've double the Christmas Market joy for you in December We've double the Christmas Market joy for you in December

Saturday 1st December and Saturday 15th December 10.30am to 1.30pm



Hovingham Village Market champions Local Producers

- **Pre order** for Christmas – we have lots of local goodies from our farmers, producers, designers and independent businesses
 - Stock up on fabulous local festive food
- Many of our stallholders have the environment at the heart of what they do. So, if you're looking for an Eco-Christmas, check out Make It Wild, and other stallholders who put nature and sustainability first.
- Congratulations to Puckett's Pickles who now recycle 100% of their waste
- Give the gift of 'learning a new skill' this Christmas - ask our stallholders - many run short courses and workshops
- Welcome to our 1st December Guest Stall - Craftsman, Peter Wernyji for beautiful wooden boards to serve food, cheese, chutneys and bread



And for your seasonal entertainment at the Market

- Enjoy some Christmas **oompah-pah** with the Swinton & District Excelsior Brass Band
 - Don't miss 'Santa' and his 'Ho Ho Ho'
 - And on the 15th meet the **Little Donkey** and Mistletoe

And always a special thankyou to our team of fantastic volunteers who turn out in all weathers to bring this market to you – and a thank you to 'you' the community for your ongoing support and good wishes

Merry Christmas!

2019 is our 10th Birthday – who would have believed it – so we are working on some birthday treats for you!

A cherished memory

This village of Hovingham really is like an extended family and there are not enough words to say how blessed I have been to have your love and support during this unbelievably difficult time.

I know that Ian valued the involvement in so many aspects of village life and the friendships made during the last twenty years. These all gave him a tremendous feeling of satisfaction and achievement which can never be measured.

It was such a comfort that so many people came to honour Ian's memory on 26th October. That will be one of the memories that I will cherish forever. Thank you all.

Carol Battersby

Ian Battersby

It is with great sadness we heard that Ian died while away on holiday in Northumberland, at the start of October. Ian was a tall, outstanding and active member of our Community. It is to Carol, their family, friends, relations, and all those that had the pleasure of knowing Ian, that our deepest condolences go. Rest in Peace Dear Friend

Winter cometh

As the chills begin, there is of course the chance of snow and ice. NYCC have reassured us that road gritting is prepared and Ryedale District Council (RDC) that rubbish collections will continue except in severe and prolonged weather when other collection arrangements may be needed – keep an eye on the village website for details should this happen.

Snow clearance:

Hovingham and Scackleton have their own stores of grit which are available to residents (contact the Parish Clerk). In Hovingham the Snow Clearing teams will be out again if needed, they are provided with shovels, glove and high-viz jackets and more volunteers are always welcome. The team clear and grit the 'main streets' to ensure a safe pathway is available. Where the council gritters don't go, our local farmers turn out clearing minor roads and helping those that are stuck.

Residents and businesses are encouraged to clear in front of their buildings.

RDC recommend the following for snow clearing:

- Do so early in the day
- Don't use hot water
- Be a good Neighbour
- Clear a central pathway first
- Place shovelled snow sensibly
- Use salt on areas you have cleared use sand or ash if no salt
- Take care on steps and steep gradients
- Use sun to your advantage



Flooding:

The Parish Council have done urgent clearance works on the beck, removing silt and congestion points. This should ensure better water flow. If you are concerned about flooding you can subscribe to email alerts from www.gov.uk/check-flood-risk or telephone (03708) 506 506

There is a village flood team that turn out with tractors, sandbags etc to help residents in the event of particularly the beck rising, even when it was Christmas and Boxing Day that did not deter them.

Again, we can be thankful to the generous and hardworking volunteers that turn out in all weathers.

Parish Council and Action Group

HOVINGHAM
Village Market

December Market

1st & 15th December

10:30^{am} to 1:30^{pm}





The Playground held it's working bee in October and had a great turn out of volunteers with many new faces. We were able to do much more than expected, with several teams barrowing gravel, lifting mats and relaying, while others sanded wood and other repairs. It was a morale boost for the team to have younger and fitter bodies to help us, so a big thank you to those that turned out.

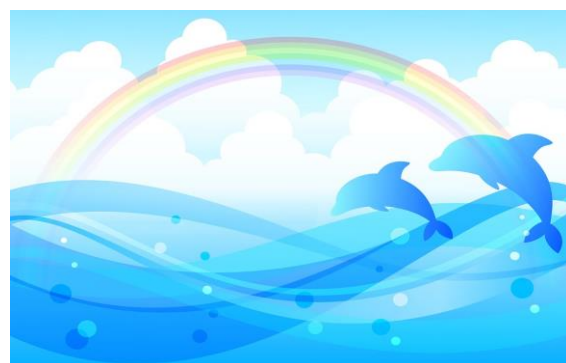


The Playground committee is still looking to pass the baton on to another team to organise the working bees and inspections. Without a new team the Playground will need to be closed. You can be assured of Parish Council, Action Group and community support, so if you can help with a few hours a year please contact David Richardson (628227) or Ann Chapman (627171) or email playground@hovingham.org.uk

Ann Chapman

Atlantic Odyssey talk raises £600 for clock electrification

On Friday the 12th of October Fiona and Michael Bennett gave a talk about their trip across the Atlantic on their 38-foot yacht in the village hall. The first half of the evening was a talk and slides and the second, a film of the voyage accompanied by music and great footage of dolphins swimming beneath the waves, beside the yacht.



At the interval everybody enjoyed freshly cooked fish, chips and mushy peas supplied by Mobile Fish and Chips of Pickering who come to Hovingham on Tuesday evenings. They managed to cook 92 fish suppers in 35 minutes!!

The event was a sell out with 93 people attending and we had to stop selling tickets several days prior. The event raised over £600 for the village clock appeal and the RNLI took over £200 in sales of Christmas cards and donations. Many thanks go for all the raffle prizes which were donated by individuals, Hovingham Bakery, Hovingham Stores, the Worsley Arms, the Park Hairdressing Salon and stall holders of Hovingham Market.

Also, many thanks to all the clock winders and wives who did a sterling job serving all the fish and chips and clearing up the hall.

Murray Stewart

Hovingham Estate www.hovingham.co.uk – Monday to Friday 8.30am to 4.00pm

Residential property - The Estate has residential property to rent, ranging from 2 bedrooms to 5 bedrooms, all situated within the village. **Contact:** The Estate Office on 01653 628771

Logs for sale - The Estate sell logs in varying load sizes which can be delivered within 1 mile of Hovingham Village. **Contact:** David Teasdale on 01653 628037

Please note due to harvest logs cannot be delivered during the months of August and September.

Holiday Cottage – Spa Cottage; is an attractive 3-bedroom, 2-bathroom cottage that sleeps 6 in comfort. For bookings please contact Rural Retreats at www.ruralretreats.co.uk or telephone 01386 701177

Hovingham Fireplaces
 Worsley Arms Business Park,
 Hovingham, York, YO62 4LA
Phone: 01653 628222

**Fireplaces
 Multi Fuel Stoves
 Marble & Granite
 surrounds
 Gas Fires,
 Stone Fireplaces
 Granite Worktops**

www.hovinghamfireplaces.co.uk

Beef, Lamb & Pork – Free Range Eggs – Fresh Seasonal Vegetables
 Choice of Sausages, Burgers and Sweet Cured Hams
 Fresh Turkey and Chickens Available for Christmas
 Orders taken NOW

We are only 2 miles West of Hovingham

Everything we sell is grown or
 born & reared on our farm

THE WALL, COULTON
 CORNER HOUSE FARM, COULTON, HOVINGHAM, YORK
 OPEN 24 HOURS, 7 DAYS A WEEK
 PHONE: 01347 888293 www.thewall-coulton.co.uk

Whether you've got sore muscles from too much physical activity or just need a stress-busting hour, Hovingham has a new solution to offer: Mary Pacitto, known to many people in the area as a mobile hairdresser for the past 27 years, has just completed a year of training as a Clinical Massage Therapist.

It all began with Mary's love of cycling. Having got the bug a few years ago, she went on to complete the coast-to-coast challenge 4 times, fund raising for Marie Currie. She has completed several other long-distance rides — which led to a need for remedial treatment. The experience of visits to sports injury specialists sparked Mary's interest in human anatomy and physiology, and she enlisted in the renowned Sue Lincoln School of Holistic Therapies, qualifying with distinction just over a year later.

Having recently started her own practice in Hovingham in a purpose-built Swedish-style cabin, she has created a soothing environment in which to expunge the stresses and strains of modern life. Among the treatments available, the 'hot stones' massage is particularly relaxing and good for wellbeing.

Interestingly, Mary Pacitto's surname comes from her Italian grandfather, who moved to England in the 1920s. A younger Mary went to Hovingham and Malton schools before heading for the bright lights of York Technical College.

So, you see she really is a thoroughly local girl with a new and exciting local business!

You can get in touch by email mary12pacitto@gmail.com

Or telephone 07703 486195



Events for you to share

Sunday 16th December at 6.30pm

'Carols Around the Tree' with Mince Pies
and Mulled Wine

Tuesday 18th December Film Club

'It's a Wonderful Life' Supper from 6.30pm
Film 7.30 pm

Sunday 23rd December Film Club

'It's a Wonderful Life' Family Matinee
Afternoon tea from 2.30pm film 3.00pm



Please visit www.worsleyarms.co.uk or call us on (01653) 628234 for further information about any of our special events

THE PARK- hair, beauty and café

is family run with 30 years experience



We provide excellent hair & beauty treatments using top of the range organic products.

And a selection of gifts too. Pop in to see what we have to offer.

Gillian, Becky & Gemma, The Park, Park Street,
Hovingham 01653 628969

info@theparkhovingham.co.uk

www.theparkhovingham.co.uk

<https://www.facebook.com/Theparkhovingham/>

It really has been a fantastic Autumn. The weather has been good for getting crops drilled and the colours on the trees a sight to behold.

Having had a dry harvest there is always a thought in the back of your mind that the weather has to break at some point. This was the case in 1976 when after a hot summer the weather broke and it turned into a wet Autumn. I looked through my dad's diary from 1976 and he first mentions rain on 14th October and during the next few weeks says it is too wet to lift Sugar Beet.

Looking through old diaries can be very fascinating just seeing how things have changed, or as with the weather, still the same frustrations! I am not sure about his filing system but tucked away at the back of the 1976 diary was a certificate from 1960 for increased milk yield of 18.75% along with the menu for a prize giving lunch at The Dorchester. Liebfraumilch was the wine on the menu...whatever happened to that?

Anyway, back to 2018. Having got most crops harvested early, it could be tempting to start and drill next year's crop earlier than usual to avoid the weather breaking. The problem with sowing cereals early is that they could grow and develop too quickly and be too lush going into the winter. Oilseed rape needs to be sown first usually at the end of August, early September. Having been so dry this summer, moisture needs to be in the soil otherwise the seed will just sit there or maybe germinate but not be able to grow away. We did get some showers in mid/late August so generally speaking conditions weren't too bad.

The early harvest did allow preparations for sowing to be done quite easily. Muck was spread, along with lime on a couple of fields that required it and fertiliser to be put on stubbles. I started drilling wheat (no rape or barley for me) on 17th September and was able to press on with that and the oats without too many rain breaks. Most of the fields got rolled down after drilling apart from a couple that got rained on so they didn't really dry up enough to do. The beans were sown in the middle of October and are now just emerging.

Once drilled, the fields got sprayed pre-emergence to stop weeds from growing. I sprayed the cereals after they had emerged with an insecticide to keep disease away and also some trace elements.

On the whole crops have been sown into good seedbeds and have emerged well and look good. Apart from a field of oats that for some reason every crow in Ryedale descended on and tried to dig up the seed. Hopefully there are enough plants still there to make a crop.

Already there have been night time visitors with wheeling across 5 fields where poachers have driven across. This does seem to be a serious problem with reports of it happening in many places.

We have done all we can to get the crops off to a good start and they look like they should do well. What the weather will throw at us between now and next harvest is anyone's guess so we will have to wait and see.

Mark Wilson

A little bit more about pesky 'Crows'

Crows Have the Largest Brain-to-body Ratio of All the Bird Species.

The brain to the body weight of crow is almost equal to that of great apes and therefore only slightly lower than humans. They are very intelligent and can count up to five numbers. These black birds easily recognise human faces and basic human language. They are also very famous for tool making and innovation.

Not only are they a pest to farmers, but to Greenkeepers, gardeners and many others have their challenges with Crows. An instance of this is in All Saints Churchyard where the turf has been severely damaged in places.

Chafer grubs are the soil-dwelling larvae of chafer beetles. Several species feed on the roots of grasses can cause problems in lawns. Particularly the crow family, tear up turf in order to access the grubs to feed on them.



Poppy Appeal - another big thank you



I am pleased to report that the Poppy Appeal raised a record £2,416.70 this 100th anniversary year. This was due the diligent house to house collectors (a special thank you to Carolyn Leech who is retiring after 41 years!), church collection, sale of the poppy wreaths, local businesses and the village market.

Thank you all for your continued support for this worthwhile cause.

Rosemary Stewart.

Remembrance Lunch a positive reflection

The service was in the in the Church because of the inclement weather. It was meticulously organised by the British Legion and the Address was by Sir William Worsley which brought the First World War experience to Hovingham on a personal level- the Hall was a Hospital and the young men of the family involved (one dying) in the Action.

Afterwards many of the village joined together for a lunch in the Village Hall. The First World War menu provided split pea soup and corned beef hash or macaroni cheese for all and puddings were also mostly WW1. This was a very happy affair.

So many people were involved from the inception to the final clearing away and all need to be thanked. The Hall looked super with displays including from the school, a new roll of honour and poppies on tables. This community effort was a real tribute to the soldiers of all wars but was a positive reflection on how everyone can come together.

So, a big thank you to all those people who organised cooked and cleaned and made a solemn remembrance into a positive current experience.

Jane Richardson

Remembrance – Thank you Hovingham from Australia



I wish to extend my appreciation to Lady Worsley for honouring my Great Uncles in laying a wreath for them - and to the all the members of the Hovingham Branch of the Royal British Legion, the Ryedale Family History Group, those at the All Saints Church and all the people of Hovingham for showing their respect, reverence and gratitude for what my grandfather, my uncles, indeed all those who left Hovingham, their families and their homes to ensure we are able to live the type of lives we do today.

I know that if they were here today Bill, Cecil, Stan, Robert, their sisters and parents would be so proud that the place they held so dear remembered them on such a special day.

I hope we can stay in touch and hope to catch up with you in the near future when I return with some of my family so they can see a small part of their family origins.

Thank you again, kindest regards, **Ross Galtry.**

Hovingham Pennant for Cecil Galtry. The Galtry's emigrated from Park Street in 1913; all four brothers volunteered for service - ed.

The Hovingham Bakery

**New Ownership
Simon Kelly &
Victoria Lundborg**

OPENING TIMES

Monday	--- closed ---
Tuesday	--- closed ---
Wednesday	8.30am - 4pm
Thursday	8.30am - 4pm
Friday	8.30am - 4pm
Saturday	8.30am - 4pm
Sunday	9.30am - 4pm

Find us on:
facebook.

www.facebook.com/hovinghamrollingpin

Telephone: **01653 628898**

Website: **www.hovinghambakery.co.uk**

HOVINGHAM STORES

NEWS PAPERS - WINES & SPIRITS - FRUIT & VEG - LOCAL MEATS & PRODUCE - CIGARETTES

We would like to introduce our sister business

Malton Road, Swinton, Malton
YO17 6SQ Phone: 01653694033

www.smithyarms.co.uk

*Traditional Country Pub serving
great food & drink 7 days a week*

With SKY/BT Sports and Pool Table



Armistice Day remembrance strongly supported

The theme of four years of commemoration has been the impact of war on our small community and has been strongly supported by residents throughout. There was a simple "lights out" ceremony in August 2014; a service in 2016 for the four local men who died on the Somme and a new memorial tablet (for which the community raised £1,800 in just three months with no grants).

Armistice Day

On Armistice Day, the Hovingham bells pealed out, joining 5,000 churches across the UK. A downpour meant that the parade of the Legion Standard, Last Post and Reveille and the laying 19 wreaths were all performed inside the church. Margaret Chappell of Driffield, laid a wreath for her four uncles, the Judson brothers; the youngest, Cyril, died in 1920 of illness contracted in war.

Lady Worsley laid a wreath for the four Galtry brothers who returned to fight, having emigrated to Australia; their youngest, Cecil, died just five weeks before the Armistice. Seven poppy crosses were also laid. The packed church service included an address plus readings and prayers from members of the community covering several different aspects of the impact of war.

A very enjoyable open lunch for 65 followed in the village hall with displays from the school, Ryedale Family History Group and members of the Methodist Chapel. In the evening, the schoolchildren's tea lights illuminated the memorial. At Scackleton, a bell was rung and a beacon lit.

The lead up

Early in November, the Hovingham Branch of the RBL set up replica 'field crosses' with details of each of the 16 men who died as well as a 'parade for pennants' for all the 78 who went to the war.

Their details are still being read by a steady stream of residents and visitors. The schoolchildren had lessons on the war, painted jars with poppies for tea lights, and held their own special service.

Thank you

The organisers thank Jane Richardson and her team for the excellent lunch, the RBL for the churchyard installations and Ryedale Family History Group whose research made so much of all this relevant to our community - including a Memorial Book in the church and a poignant and very personal archive of the Galtry family.

We must also thank and congratulate our intrepid poppy collectors who, along with the collection in Church raised a magnificent record total of £2416.70 – see elsewhere for full details.

Perhaps symbolic of the depth of support, just after 7.00am on Armistice Day, was a teenage girl walking slowly along the sixteen-replica field burial crosses and reading every one of the men's stories.

Wreath & Cross Laying

Wreaths were laid by

Royal British Legion
The Lord Lieutenantcy
Hovingham Parish Council
Hovingham Estate
The Anglicans
The Methodists
The Roman Catholics
The Women's Fellowship
Ryedale Family History Group
Hovingham School
The Cricket Club
The Bowls Club
The Tennis Club
The Market
The Leeds Pals

Personal Wreaths were laid for

RHR Benson
The Galtry Brothers
The Judson Brothers
Lt D de R Martin

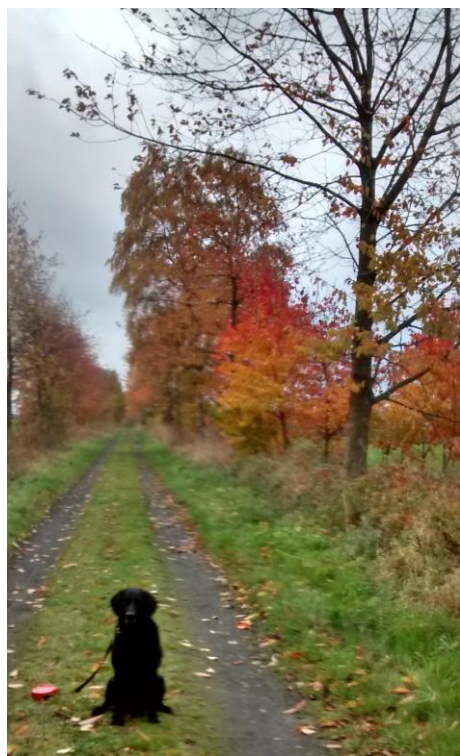
Seven poppy crosses
were also laid



Bill Clapperton's striking High Street sentry.

Some of the 16-replica battlefield burial crosses, the wreaths and the restored war memorial with the new memorial tablet.

At the going down of the sun... children's poppy jars light up the night.



Have you seen a hare recently? I did and was so pleased as I had heard that the horrible disease of myxomatosis could have been transferred to the British brown hare.

I was taking a friend for a drive near Lastingham and had to look twice as we saw a field with many red-legged or French partridges, all with beautiful colourings. That bird is noticeably larger than the grey partridge I last saw in Hovingham fields.

I love walking locally and on the old railway track to Cawton there is a tree absolutely full of crab apples. I remember my mother patiently making crab apple jelly many years ago. As I walk, I notice the last of the blue scabias. It is interesting to see abandoned water tanks with crops round them – a sign of less stock in the fields.

I love to see and hear the geese flying in their v-formation. I wish I had been at a friends' house when a long-eared owl visited their garden. At my daughter's house in Wiggington there are several squirrels and I doubled checked with Alexander that the interesting noise I heard was squirrels talking to one another.

Sue Goodwill

Belle on the Old Railway Track at Hovingham amid splendiferous autumn leaves

Rainfall - Hovingham (in mm)

	Jan	Feb	Mar	Apr	May	Jun	Jul	Aug	Sep	Oct	Nov	Dec	Total
2011	43	68	6	2	41	52	48	112	25	67	28	66	558
2012	49	16	20	148	48	102	110	76	113	97	137	122	1038
2013	57	24	52	14	83	48	26	55	57	90	55	57	620
2014	127	58	38	23	35	54	52	94	29	72	108	48	838
2015	26	20	36	21	89	15	79	67	72	71	110	151	757
2016	87	54	93	82	24	61	41	68	31	43	82	27	693
2017	32	73	44	13	43	122	55	76	91	68	57	66	740
2018	73	34	100	90	34	27	54	52	50	55			
Avg	63	47	43	50	54	63	57	68	57	77	72	64	715

* A little calmness has returned to rainfall figures – but will it snow for Christmas??

Avg - figures calculated from 1997 to 2017

Figures reproduced with the permission of Robert Wainwright



Planning a new
indoor activity?
Our discounts
can help!

Pilot session for regular use - up to 100% off !!!

Residents or regular use - up to 25% off

Will it work? Will it be affordable? Will the first session succeed? The only way to know for sure is **to try it and see**. Your Village Hall would like to help you. Give us a call - we can offer practical advice and even advise on publicity.

Your Village Hall supports new activities

Call Janice on 01653 628952 or visit www.hovingham.org.uk

Government Consultations:

Nationally, the two Government consultations proposing that fracking is made permitted development and the other that fracking is made a Nationally Significant Infrastructure Project have now closed. There was a significant response to these consultations from the Council for the Protection of Rural England, other national organisations and individuals.

On 31st October **the Government opened a third consultation** to seek views on whether fracking companies should be required to conduct pre-application consultation with the local community prior to submitting a planning application for shale gas development. This consultation closes on 9th January 2018. See here for details:

<https://www.gov.uk/government/consultations/compulsory-community-pre-application-consultation-for-shale-gas-development>

Communities in Scotland are calling for a legal ban on fracking. The current moratorium was challenged by INEOS.

Malton Mayor's Legal Challenge

Locally, the Mayor of Malton's legal challenge was heard by Mr Justice Holgate, one of the country's most senior planning judges. The judge indicated that the written ministerial statement was guidance only. He suggested that once mineral planning authorities have noted the existence of the fracking definition in the statement, they were entitled to apply a wider definition, provided they explained their reasons for so doing so. (see *The Queen (on the application of Paul John Andrews) v The Secretary of State for Business Energy and Industrial Strategy and the Secretary of State for Housing Communities and Local Government*).

On the basis of the Justice Holgate's summing up it would seem that the North Yorkshire Minerals and Waste Joint Plan would come under this ambit i.e. that it is a properly justified policy which has been widely consulted on and subject to an examination in public where an Independent Planning Inspector considers it sound in principle.

Third Energy – the Company

In Kirby Misperton, Third Energy are attempting to regularise all their planning permissions in Ryedale so they end on the same date. Third Energy UK Gas Limited have submitted accounts to Companies House. For the year ending December 2017 liabilities had risen to £63.9m and annual losses to £3.5m. Turnover was down from £757,000 in 2016 to £191,000 last year.

The company said it was "actively seeking" new sources of funding". It needs £14m to develop the Ryedale gas field and more cash injections to keep afloat. But the accounts said there was "significant doubt" about Third Energy's ability to continue as a going concern and the company is up for sale. They continue to operate in the area although many of their planning permissions have in fact expired.

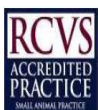
Lancashire fracking

Over in Lancashire, Cuadrilla continue to frack (at Preston New Rd, Little Plumpton). However over 30 seismic events have been caused by the operations and have curbed the progress of the operation.

David R Davis, November 2018



Dedicated small animal practice in modern purpose-built premises. Our friendly team of four vets, four fully qualified nurses and support staff are all committed to providing the best possible care for your pets. We are your pets' GP, surgeon, dentist and midwife.



With branches at Kirkbymoorside & Pickering
www.edgemoor-vets.co.uk


merry
christmas
&
happy New Year

At the management committee meeting in November we assessed what has been achieved recently. The roof work has been finished as has the outside painting – both good progress. Still on-going are the applications for grants to position a defibrillator and electric car charging point on the Village Hall wall. We are now looking at the coming year and amongst other things we hope to improve the ladies toilet, do further outside repairs and continue regular maintenance jobs.

In October the whole Hovingham community was invited to take part in a Village Survey that included questions about the Village Hall. We look forward to knowing what the community expects and how we can meet the ideas suggested.

On 11th November we had a special day at the Village Hall when after a wreath laying ceremony and service of remembrance at the Church, there was an Armistice Day lunch – a ‘bring and share’, open lunch which was attended by nearly 70 people. Sir William Worsley introduced a new Roll of Honour dedicated to all who served in World War 1, which is now on permanent display in the Community room.

We look forward to the December Village Markets at the Hall when Christmas treats and presents will be abundant. Meanwhile we wish you all the best for Christmas and a Happy New Year.

Richard Senior



Home too small
to entertain?

There's a LOT
more space
at our place!

Hovingham Village Hall

Call Janice on 01653 628952 or visit www.hovingham.org.uk

Hovingham School News – New academic year begins!!

After the glorious weather of the school summer holidays September heralded the start of a new academic year. We welcomed our new Reception children into school for the start of their school journey and everyone else moved up a year, some to a new class and a new teacher, others to greater responsibility, but all with new and exciting challenges.

Our Junior pupils are studying the Iron Age this term and a few weeks into term they visited the Ryedale Folk Museum. Pupils visited the museums Roundhouse, learnt how it was built, how Iron Age people hunted for food, and even created some of their own Iron Age pottery. It was a great hands-on day which has really brought their topic to life.

In October we were thrilled to announce that we have been awarded the “Primary Science Quality Mark” (PSQM) The award celebrates a commitment to excellence in science teaching and learning. Jane Turner, PSQM national director, said: “Gaining a Primary Science Quality Award is a significant achievement for a school. “The profile and quality of science teaching and learning in each awarded school is very high.”



In November all pupils took part in a Remembrance Service, at All Saint's Church. The children made puppy wreaths and decorated jam jars to hold candles. Unfortunately, the weather rather spoiled the planned outdoor service but the children respectfully took part, and paused to remember.

Inter School sports competitions have already started and along with our partner school, St Hilda's Ampleforth, all Year 1 to Year 6 pupils will be taking part in either football, basketball or dodgeball competitions this term. These events are great opportunities for pupils to mix socially in bigger peer groups, learn team skills and develop a sense of pride in their collective achievements

Finally, the deadline for applying for a Primary School place in September 2019 is Tuesday 15th January 2019. If you or anyone you know would like more information about our school please look at our website:

www.hovingham.n-yorks.sch.uk or contact the school office 01653 628358

Heather Leggett

Treasurers Report

Sue John handed £510 to Lyn, these being the profits from the May Café Market. £78.75 was spent on the new village bench. Bank account currently stands at £5,258 in credit but yet to pay £1,500 for the defib.

Neighbourhood Watch

Nicole had contacted Scarborough Police with a view to completing new NHW forms and applying for new signs to be put up in the village. It was reported that diesel had been stolen from Town End Farm. Cherry Coward reported evidence of poachers on her land leading towards Low Moor Farm.

Pinfold

Jim presented those present with a 'mock-up' plan of an indicator board to be erected in the pinfold. Everyone agreed it was exactly along the lines of what was required with just one or two tweaks. Sue to provide Jim with contact details for Croft Castings who had supplied the new "Scackleton" signs, as they had indicated that they could create the signs for the pinfold too. Nicole & Jim spent time tidying up the pinfold by way of weeding etc.

Water Pump & Notice Board

It was acknowledged that some kind people in the village had tidied up both water pumps and thanks went to Rob Matthews for repairing/refurbishing the village notice board.

Newsletter Correspondent

Clive Birch agreed to take on board the role of reporting community news to the publishers of the Hovingham & Scackleton Magazine and encouraged everyone to bring to him articles/photographs of interest in order to enhance the village's profile.

The Caravan

Ryedale District Council Planning Department have served an Enforcement Notice. The residents of the caravan have taken this to an appeal however RDC are waiting to appoint an Enforcement Office in order to progress the case further. Concerns were raised as to where sewerage is draining and should the Environment Agency be contacted? Also, persistent noise coming from barking dogs. Those wishing to log a complaint were encouraged to email the current Case Officer, Alan Goforth, at RDC alan.goforth@ryedale.gov.uk

Any Other Business

- After a lengthy discussion, the committee voted and it was agreed the Action Group would pay £1,000 towards tree maintenance in the church yard.
- Wendy expressed concern that some money raised from previous fund-raising events seemed to have 'got lost' in the church accounts and is to approach David Martin (church treasurer) for copies of previous accounting records.
- There was a suggestion of another defibrillator training session for those who were new to the village, those who were absent at the last session and for those who had simply forgotten the procedure. The question was asked "should we have public liability insurance with regards to incidents involving use of the defibrillator"?
- It was confirmed that a beacon would be lit to commemorate the centenary of Armistice Day on Sunday 11th November. The beacon to be lit at 5pm, location to be in Roland Firby's field. Everyone welcome and to along bring food to share. The church bell will be rung at 2 minutes past 7pm on the same day.
- Sue John reminded everyone that the Café Market was looming in October. Various people volunteered their help.
- Wendy Swann outlined details of Hovingham Community Emergency Plan and how it worked. It was suggested a similar plan would not be as beneficial for Scackleton.
- Harvest Festival scheduled for Sunday 14th October @ 3pm.

Clive Birch



Market - contact [Peter Stark or Caroline Davis](#)

- The Market received a “Highly Commended” award from the 2018 Yorkshire Post Rural Awards Community Group of the Year.
- Over 700 visitors came to the October market; the weather was fine, but rain did threaten throughout after a wet set up. The November market did even better with over 820 visitors, although dry it was very windy. The café run by the Church team did very well, and the funds raised will be put to good use.
- Thanks to everyone who help before, during and after every market. New volunteers are always welcome.
- Community Groups wanting to run a Community Stall should contact the Market Group.
- Market News is published prior to every Market; subscribe via the website to receive a copy by email.

Environment and Wildlife - contact [Ann Chapman, or David Richardson](#)

- If you would like to be involved in the restoration of the village telephone box contact action@hovingham.org.uk
- Church clock electrification continues after the successful Atlantic Odyssey talk on the 12th of October. An audience of 93 raised over £600. Total so far is £2,900 towards the anticipated cost of £7,000, so some way to go yet!

Playground - contact [Ann Chapman, Carol Battersby, Rosemary Stewart or David Richardson](#)

- Working Bee carried out in October to complete various maintenance tasks. Excellent turnout of volunteers.
- **The playground is solely run by volunteers and is in desperate need of new committee members; please contact us if you would like to be involved or can help occasionally with maintenance or inspection duties.**

Neighbourhood Watch & Speedwatch - contact [Ann, Phil Chapman, or Rob Tulloch](#)

- Speedwatch continues in Hovingham, the main aim, to reduce speeds of vehicles through the village. The team clocking speeding vehicles and offenders are logged and infringements of the 30-mph limit reported to the police. Speeding drivers receive a written warning, but if speed is excessive, they will be visited by the police. If you would like to take part please contact action@hovingham.org.uk
- You can subscribe to regular Neighbourhood Watch email alerts by subscribing on the Village Website.

Newsletter - contact [Ann Chapman or newsletter@hovingham.org.uk](#)

- The newsletter is an excellent source of local information, news and comment. Colour copies are available on the Village Website and you can subscribe to receive copies by email.
- We welcome two new editors to help proof read articles and liaise with contributors. The editorial team would welcome further volunteers to the team please contact us if you can help.

Website – www.hovingham.org.uk contact action@hovingham.org.uk

- Details of events of interest to residents are welcome for inclusion in the Village Diary and the website - email events@hovingham.org.uk.
- To receive the Weekly Village Diary by email, subscribe via the village website.

Project Purple - contact: purple@hovingham.org.uk

- This is a long-term evaluation of opportunities around renewable energy, recycling and energy efficiency. It is hoped to encourage residents and businesses to reduce the impact on the environment. The 2018 village survey has been delivered and collected from each household and will help shape the project. The results of the survey will be analysed and in due course a report will be produced and shared with the community, showing results and recommendations.
- If you would like to be involved or want to contact the group please email purple@hovingham.org.uk

Volunteering - contact [Ann Chapman, Caroline Davis or David Richardson](#)

- **The Action Group welcomes new volunteers. If you would like to help, just for an hour or so please get in touch. You can contact any of the groups directly or via an email to action@hovingham.org.uk**

David Richardson

Councillor Ian Battersby

The Parish Council, together with members of the public attending the meeting, stood in silence in memory of Councillor Ian Battersby, Vice-Chairman and former Chairman of the Parish Council.

Ryedale District - Mr R. Wainwright

- A new Chief Executive, Ms S Burlet, has taken up her post sharing her time between RDC and NYCC.
- RDC are investigating viability of the Malton livestock Market and plans for disposing of Ryedale House and new building in Wentworth Street. This building would also house NY Police and NYCC local office.

GENERAL

Emergency Plan Review – The Hovingham Plan will be updated. Scackleton have decided not to proceed with their Summary Review.

1911 Armistice Remembered – The focal point was 11th November 2018; this and the subsequent 'bring and share' lunch in the village hall. 18 wreaths were laid.

Vacancy on Parish Council – The consultation period ended on 22nd November.

Village Hall Constitution – The VHMC have not yet decided whether to proceed with the CIO. It is proposed that the Parish Council meet with the VHMC to agree a joint strategy on the best way to proceed.

Village Hall Car Park Wall – A ball-park quote has now been received. At least one more quote will be required.

Village Survey – The Hovingham Purple Group have distributed and collected questionnaires. The responses are now being independently collated by Community First North Yorkshire. Initial indications are that the response rate is high and similar to the very successful 2008 survey.

Winter Salt and Grit – This is now delivered and a new bin has been purchased for Scackleton.

SCACKLETON

Action Group; An Action Group report has been circulated and is available on the Hovingham website.

Planning Appeal; An Inspector has been appointed and the Parish Council will be supporting RDC's enforcement action and objecting to the development.

Remembrance Tree; A cherry tree is being purchased by the Parish Council.

2019 PARISH COUNCIL MEETINGS

All start at 7pm in the Hovingham Community Room, except July meeting which is in Scackleton Church

- January 9th (Annual Parish Meeting & PC Meeting)
- March 13th
- May 8th (following Elections on May 2nd) Annual Mtg
- Remainder to be decided by new Parish Council

All residents are welcome to attend

HOVINGHAM

Action Group A report is available on website. An urgent appeal for members for the Playground Steering Group and Newsletter Group is being made.

Brookside Railing This is now repaired and will be painted shortly. Strimmer protection will be acquired.

Electric Vehicle Charging Point the Parish Council support the proposal made by the Purple Group for a charging point in the Village Hall Car Park. A free survey will now be undertaken.

Condition of Beck and Flood Relief Channel Emergency work is required to remove congestion under Victoria Bridge and also to improve the entrance to the flood relief channel; Councillor Mark Wilson is arranging for the work to immediately take place which the PC will pay for.

Location of Hovingham Armistice Tree – It is proposed to site this tree outside the church on the small green. The Parish Council are seeking advice on the most suitable tree and protection required.

Playground Steering Group – the current committee want to stand down after 6 years. The community are looking for anyone prepared to help oversee this valuable village resource. The Parish Council encourage anyone interested in joining the group to contact either the Playground Group (playground@hovingham.org.uk) or the Council, to avoid a possible closure of the Playground which they discourage and would hope to avoid.

Recycling Area – Abuse of the current area is continuing. This is likely to lead to Ryedale District Council withdrawing their support. Please help keep this area tidy and only dispose of valid recycling in this area, otherwise we may lose it.

Village and Playground Seat Maintenance These have been stored away for the winter and their annual maintenance. Thank you to Hovingham Estate and the

FINANCE

Report copies are available on the website. Fortunately, we have received no income from the Cemetery and Car Park donations are approaching £1,000 per year.

Agreed Expenditure It was agreed to spend:

- up to £400 on winter salt and grit
- up to £250 painting new railings on Brookside
- up to £100 on strimmer guards for above
- up to £100 for Scackleton grit bin

YLCA Subscription it was agreed to continue. We have been advised there will be a 3.4% increase next March.

RDC Chairman's Fund it was agreed to donate £50.

Malt Shovel Housing Planning Application

The Parish Council objected to this application on grounds of restricted access, impact on public footpaths and damage to the Malt Shovel during construction.

December 2018

1 st Sat	Hovingham Village Market 10:30^{am} to 1:30^{pm} Village Hall Please come along and support your Market; Hovingham Playground Group will be running the Community Café	
2 nd Sun	Hovingham Morning Prayer 10:30^{am} All Saints'	Methodist 10:30^{am} T.Short
3 rd Mon	Recycling Collection - Recycling Bins	
4 th Tue	Hovingham Women's Fellowship Meal together tba	
5 th Wed	Hovingham School Christmas Fair 3:30^{pm} to 6:30^{pm} Village Hall Stalls including Emma Bridgewater Pottery, Bags, Chocolates, Jewellery, Art, Greetings Cards and more. Refreshments, Raffle and Tombola. Please come along and join us.	
8 th Sat	Concert of Music for Advent and Christmas 5^{pm} All Saints' Church Ampleforth and Ryedale Concert Choir. Tickets include Mulled Wine and Mince Pies £10 from Village Shop or Call (01653)-628386	
9 th Sun	Eucharist 10:30^{am} All Saints' Church	Methodist 10:30^{am} - Local
10 th Mon	Landfill Waste Collection - Green Bin	Supermobile Library 5^{pm} until 7^{pm}
13 th Thu	Hovingham Tea Spot - 10:30^{am} to 11:30^{am} Rolling Pin Tearoom If you need transport call Louise 628064 or Sue 628077 and we will pick you up.	
15 th Sat	Hovingham Village Market 10:30^{am} to 1:30^{pm} Village Hall Please come along and support your Market; Friends of Hovingham School will be running the Community Café	
16 th Sun	Carols at the Worsley Arms Hotel - 6:30^{pm} to 7:30^{pm}	
17 th Mon	Recycling Collection - Recycling Bins	
23 rd Sun	Benefice Eucharist 10:30^{am} Amotherby	Methodist 10:30^{am} T.Short (Carols)
24 th Mon	Landfill Waste Collection - Green Bin	Supermobile Library 5^{pm} until 7^{pm}
	Christingle Service 4^{pm}-5^{pm} All Saints' Church Hovingham	
25 th Tue	Christmas Day	
	Christmas Day Service 10:30^{am} to 11:30^{am} - All Saints' Church	
26 th Wed	Boxing Day	
30 th Sun	Benefice Eucharist 10:30^{am} Barton-le-Street	Methodist 10:30^{am} K.Pattison
31 st Mon	Recycling Collection - Recycling Bins	

January 2018

1 st Tue	New Year's Day - Holiday	
6 th Sun	BCP Eucharist 10:30^{am} All Saints' Church	Methodist 10:30^{am} Joint Covenant Service at Slingsby Chapel
7 th Mon	Landfill Waste Collection - Green Bin	Supermobile Library 5^{pm} until 7^{pm}
10 th Thu	Hovingham Tea Spot - 10:30^{am} to 11:30^{am} Rolling Pin Tearoom If you need transport call Louise 628064 or Sue 628077 and we will pick you up.	
13 th Sun	Eucharist 10:30^{am} All Saints' Church	Methodist 10:30^{am} G.Moules
14 th Mon	Recycling Collection - Recycling Bins	
20 th Sun	Benefice Eucharist 10:30^{am} Scackleton	Methodist 10:30^{am} N.Smith
21 st Mon	Landfill Waste Collection - Green Bin	Supermobile Library 5^{pm} until 7^{pm}
27 th Sun	Eucharist 10:30^{am} All Saints'	Methodist 10:30^{am} T.Short Holy Communion

These Events normally take place weekly (except bank holidays)

	Mobile Post Office visits Hovingham - 2:30^{pm} to 3:00^{pm} - outside Malt Shovel	
	Hovingham Primary Tennis After School Club (except School Hols) 3:45^{pm}-4:45^{pm}	
Tue	Scrumptious Fish & Chip Van - 5:35^{pm} Hall Green, opposite Village Hall (Check availability during January)	
	Hatha Yoga 6^{pm}-7^{pm} Village Hall-all ages, abilities & flexibilities! 1st session £5, then £8 or £35 for 5. www.anandiniyoga.co.uk Mats provided, booking essential Verity (07821)588117 amandinyoga@hotmail.com	
Wed	Barre Concept Class -11:15^{am} - Village Hall, run by Katie Mae Ellis (details above)	
	Mobile Post Office visits Hovingham - 9:45^{am} to 10:15^{am} - outside Malt Shovel	
Thu	Ryedale Family History Group - 10^{am} to 3^{pm} - Community Room Drop in any time; Further details available from www.ryedalefamilyhistory.org	
Fri	Pilates Class - 10:45^{am} for one hour - Village Hall run by Tracey Prest - All Welcome; Further details available at www.pilateswithtracey.co.uk or (07789)-990261	