

# The Hovingham and Scackleton Newsletter

August 2017

## Welcome to the Hovingham and Scackleton Newsletter

Welcome to Summer with the promise of long days of sunshine (and hopefully the right amount of rain), keeping nature in balance and the Ryedale countryside beautiful.

In this issue you'll find the second instalment of the Hovingham British Legion's insights into the First World War as we approach the centenary of the end of WWI in November 1918; we celebrate the arrival of a newly refurbished train; updates about the recent Coffee in the Garden and Pet Service events; and look ahead to an eclectic mix of jazz, an Italian evening, and a Safari lunch. We also have news about a well known resident, who has many friends in Hovingham. Dennis is moving from Pasture Lane to pastures new

This newsletter is produced six times a year with contributions from many residents, local businesses, clubs, societies, the Parish Council, the Action Group, the Church and Chapel. Major contributors to this issue include Rob Thompson for commissioning a series of fascinating articles about WWI and his creative and comical cartoon; Mark Wilson for his regular, much enjoyed and honest reflections about farming today; Robert Wainwright who diligently records rainfall data (and has shared some fabulous photos taken using a drone); and to all of our readers for your on-going support and interest. A warm welcome to Sally Paybody who has recently joined the Newsletter team.

On this note, our sincere thanks to Margaret Bell (and Professor Martin Bell) who have made an enormous contribution to Hovingham from the concept to implementation of the Hovingham Community Plan including the well respected monthly Market and the Newsletter. We wish them both every happiness in their planned move and thank them both for their significant voluntary and sustained contribution over the years, and ensuring Hovingham remains a vibrant and living community in the 21<sup>st</sup> Century.

**Caroline Davis**

## The Hovingham Flyer has arrived at Platform 'Playground'

The train in the Playground is a very popular with children and many children head straight to it on arrival. Despite a paint job several years ago, the train was beginning to look a little sad and scruffy. So into the restoration workshop it went and now has emerged in a fetching shade of blue and bearing new artwork and a name plate - 'Hovingham Flyer'.

Many hours of work has gone into this restoration and you may spot:

- a large blue plastic barrel suitably formed into an engine cover and studded with bolt covers giving that 'authentic' look
- a heavy piece of black pipe as a magnificent funnel
- name plates formed from correx board and covered in specially created vinyl artwork
- further artwork on the sides of the carriages featuring cheerful images of the numerals and the alphabet;
- to give that true steam train appeal is an insert in the engine cab showing a firebox, knobs, dials and lever.
- And, last but not least, a sparkling new floor for all those young feet.



So young and old are invited to see the new Hovingham Flyer down in the Playground, make it a picnic, there is plenty of seating and tables.

Remember that the Playground is run entirely by volunteers and raises all the monies needed for maintenance and running costs, so donations are very welcome.

Also we have a **Playground Working Bee** on Monday 4th September to do some light maintenance and strimmer guard protection around the posts. We would love to have your help. Contact us on [action@hovingham.org.uk](mailto:action@hovingham.org.uk).

**Contact: [newsletter@hovingham.org.uk](mailto:newsletter@hovingham.org.uk) or (01653)-628364**

Published and © 2017 by The Hovingham & Scackleton Newsletter Group. Views are not necessarily those of Group or Parish Council

Are you interested in bringing your energy and ideas to lead or support potential new projects for Hovingham? At the recent Hovingham Action Group AGM, looking to the future, the following new projects were considered:

**Creation of an interactive map for Hovingham** detailing the location of key infrastructure elements: facilities, amenities and points of interest eg litter & dog waste bins, notice boards, grit bins, phone box, post box, village shop, public house, church, chapel, churchyard, war memorial, village hall, school, bus stop, playground etc. This project is in conjunction with Ryedale District Council and North Yorkshire County Council. **Lead: Phil Chapman**

**Community Energy** – conduct an initial fact find to explore the potential for the Hovingham community to benefit from the new Government rules to make it easier for people (and communities) to generate their own power using renewable sources, store in batteries and sell to the National Grid, resulting in savings to consumers of £17bn-£40bn by 2050.

This would be a long term project with some complexity. The feasibility of related projects such as low energy, movement sensitive street lighting for dark areas of the village, could be taken within scope of this broader project. If you'd like to express interest in forming a core team, please contact [action@hovingham.org.uk](mailto:action@hovingham.org.uk)



**Electric car charging point(s)** – with the increased interest and projected use of electric cars, a core group will explore the feasibility of having a super fast electric car charging point in the village. This will benefit residents who have or are considering acquiring an electric car and will undoubtedly benefit visitors too given Hovingham's location. If you'd like to be involved, please contact [action@hovingham.org.uk](mailto:action@hovingham.org.uk)

**Restoration of the telephone box** –this involves replacing the plastic panels with glass, cleaning and painting the telephone box. There are willing helpers looking for a lead volunteer who can coordinate this project. Scackleton have experience of a similar project so there's plenty of know how to share and benefit from. To express interest, contact [action@hovingham.org.uk](mailto:action@hovingham.org.uk)



**Restoration of the village signs** – many of the Hovingham traditional signs are in need of restoration. If you are able to help, please contact David Richardson c/o [action@hovingham.org.uk](mailto:action@hovingham.org.uk)

*Caroline Davis*

## Dolce Vita - Italian night dining - Saturday 23<sup>rd</sup> September

### \* Fund raising event \*

Join us for a night of authentic Italian cuisine, all cooked by a traditional baker from Tuscany who is flying over especially. Our previous Italian evening was very successful so early booking is advised. Vegetarian option available upon request. Alcoholic beverages will be served.

**Saturday 23<sup>rd</sup> September, 7pm at Hovingham Village Hall**

Tickets - £15 per adult, £10 for children under 12

To buy your ticket please call Annise or Michelle to buy on 01653 627184

or email [m.bertucci@btinternet.com](mailto:m.bertucci@btinternet.com)

*All proceeds go to Annise Bertucci  
for her volunteer trip to Kenya in 2018.*



### ANTIPASTA

Tuscan mixed Antipasto with authentic Tuscan Crostini

### FIRST COURSE

Traditional Tuscan Pasta Dish

### MAIN DISH

Italian Style chicken with Al Forno potatoes and vegetables

### DESSERT

Traditional Italian dessert

## Hovingham Chapel News

The Ryedale Circuit is looking forward to the arrival of the Revd. Ken Gowland and Deacon Fiona Debolz. Their welcome service will be at 10.30a.m. on September 3rd at Helmsley Chapel.

Yes it's that time of year coming up again, time to show our appreciation for the miracle of the **Harvest**. Do come and celebrate with us. There will be two opportunities to enjoy Hovingham Chapel Harvest Festivals:

**Sunday 15th October at 10.30am** conducted by Revd. Mark Haynes

**Monday 16th October at 6.30pm** conducted by Robin Jackson,  
followed by a fun auction and the usual delicious Harvest Supper.

**Come and join us. All Welcome.**



## Hovingham Cricket Club



The Cricket Club enjoyed a successful 6 a side tournament on Sunday 23rd July, raising much needed funds.

The club are always on the look out for new members; players, umpires, scorers or supporters.

If you are interested please call in on a Saturday afternoon and find out more.

Or get in touch with the club via Mieke Mosey - [miekemosey@outlook.com](mailto:miekemosey@outlook.com).

**Mieke Mosey**

## Jazz at the Hall - Saturday 30th September - in aid of the Church Repairs



In our continuing effort to raise money for the Church Repairs, Sir William and Lady Worsley have kindly given permission for the use of the Riding School for an evening of Jazz on

**Saturday the 30<sup>th</sup> of September at 7.30pm.**

Will Dore will bring Ampleforth School's Big Band and their small Trad band

There will be a licensed bar selling beer and wine and hopefully Michael Pern will bring his pizza oven.

Please put a note in your diary. I am sure it will be a wonderful evening of music and fun.

For tickets please phone 01653 628 386, 628922

**Graham Mason**

## Safari Lunch - in aid of Village Clock Appeal - 25th October



**Saturday 28<sup>th</sup> October First course 12.15pm - £20 per person**

We would like as many people as possible to join us, as this is a lovely way of getting to know people locally. Singles are very welcome.

We plan canapés in one to two venues, the main course will be in various venues, and desert and coffee will be at the Manor House.

As numbers are limited, if you would like to join us please ring one of the following numbers for more information or to reserve a place by August 14<sup>th</sup>

Di Davies 627129/ Rosemary Stewart 628741 / Jackie Mason 628386

When reserving a place please advise of any dietary requirements.



## Dennis Anderson

Dennis Anderson died on Saturday, and for all those that knew him , they respected this stalwart of politeness, fortitude and kindness. Dennis was soon to leave Hovingham and was bound for a British Legion run Care Home near Taunton, there to be cared for by the staff and visited much more easily by his son David.

We can only wish Dennis a fond farewell knowing he will be much missed by family, his many friends and neighbours.

Keep an eye on the website [www.hovingham.org.uk](http://www.hovingham.org.uk) for details of his funeral service.

*Your many friends in Hovingham*

## Changes at Hovingham Surgery from 31st July

Many residents will have received a letter from the surgery explaining the building works at Ampleforth and the need to relocate at the end of July for about 6 months. It is moving to St Benedict's House, East End, Ampleforth.

As a result Hovingham Surgery will be affected:

- Hovingham will now be the base for the Pharmacy Dispensing service
- Hovingham will have more Nurse and Doctor appointment times available.
- From Monday the 31st of July the Hovingham appointment times will be:

Monday	Tuesday	Wednesday	Thursday	Friday	Saturday/Sunday
8:00 - 20:00	8:00 - 18:30	8:00 - 18:30	8:00 - 18:30	8:00 - 18:30	Closed

## Road Closures can be heavenly

We have recently enjoyed three road closures while road works were being done. The sheer luxury of no lorries pounding noisily and speedily through the street was heavenly. No lorries banging and crashing in the early morning, no thumping and bumping, no grinding of gears, no hissing of brakes, no clouds of diesel fumes, no roaring of engines - what a treat - what bliss.

And then, oh dear, the sign is gone and the cacophony returns - Sigh.

Will the day ever come when lorries are electrified and don't wake us up at 4, 5 and 6 in the morning, or make so much noise you can't speak to someone next to you?

*Wistful Residents*

**ROAD  
AHEAD  
CLOSED**

## Did you hear that?

Did you hear a very powerful aircraft go over Hovingham around 13:00 on Sunday July 23rd?



It was the WW2 Lancaster bomber from the Battle of Britain Memorial Flight in Lincolnshire, en route to Sunderland Air Show.

Other low flying BBMF aircraft have overflown Hovingham, probably using Ampleforth Abbey as a distinctive landmark.

*Rob Thompson*



*The circus are bringing their elephant but don't worry, I'm asking Mark Wilson to lend his tractor and scoop!*

We are now very close to the start of Fracking in the UK. Kirby Misperton is currently enjoying the usual sounds from Flamingoland but is only weeks away from the sounds of lorries rolling in with the equipment and materials to frack the KM8 borehole.

In the most recently submitted documents relating to pre commencement planning conditions imposed by North Yorkshire County Council (NYCC), it is clear that the Transport documentation is sticking very close to the applicant's (Third Energy) initial submissions rather than taking into account, to any great extent, the concerns of the local community. This should be a warning to all Ryedale residents.

After many consultation responses to the Final Publication draft of the Minerals and Waste Joint Plan in December 2016, the parties to the plan (NYCC, NYMNPA, CoYC) have agreed that the plan for submission should be amended subsequent to that consultation. The proposed amendments are many and this is the final chance to consult on the plan in terms of its legality and soundness.

There are many consultees on the list of consultees (thousands in fact), for example all Parish Councils etc. I would urge all local consultees to submit a response to what will be the first minerals and waste plan to be submitted since the arrival of onshore fracking in the UK. The consultation closes at 1700 on **06 September 2017**. After this stage the plan will be submitted for an Examination in Public. This is where the plan is 'examined' by a planning inspector to ensure it complies with planning policy. <https://www.northyorks.gov.uk/changes-minerals-and-waste-plan> **David Davis**

## Hovingham Village and Market Websites

# HOVINGHAM

[www.hovingham.org.uk](http://www.hovingham.org.uk)



# HOVINGHAM Village Market

[www.hovingham-market.org.uk](http://www.hovingham-market.org.uk)

The new Hovingham Village and Market Websites are both celebrating their first birthdays, with at least three times the number of visitors, with even more on Friday before every Market. The website provides a solid foundation for the Market and other Village Community Groups, informing and communicating with residents.

New features include:

- Bus timetables and other useful transport information
- Map and directions of journeys to and from Hovingham
- Subscribe to receive copies of *Market News*, *Neighbourhood Watch*, *Newsletter* and *Village Diary* direct by email
- View Newsletters since December 2011, Parish Council Documents and copies of Market News
- View the Water level of the Hovingham Beck, in real-time, together with the Emergency Plan for Hovingham
- Most popular new pages are "Market Dates", closely followed by "Market Stallholders" and the "Bakery", most website visits are on the Friday prior to every Market and were on the day before the August Bank Holiday Car Boot Sale

Please email us at [diary@hovingham.org.uk](mailto:diary@hovingham.org.uk), [market@hovingham.org.uk](mailto:market@hovingham.org.uk), [website@hovingham.org.uk](mailto:website@hovingham.org.uk) if you would like details of your local organisation, business or event included in the Village Diary or on the websites.

Thank you to the NYCC Stronger Community Fund which provided a valuable grant to help develop the websites; together with the hard work of David Richardson, Caroline Davis and Janice Wood who ensured success.

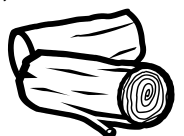
## Hovingham Estate [www.hovingham.co.uk](http://www.hovingham.co.uk)

**Residential property** - The Estate has residential property to rent, ranging from 2 bedrooms to 5 bedrooms, all situated within the village. **Contact:** The Estate Office on 01653 628771

**Logs for sale** - The Estate sell logs in varying load sizes which can be delivered within 1 mile of Hovingham Village. **Contact:** David Teasdale on 01653 628037

Please note due to harvest logs cannot be delivered during the months of August and September.

**Holiday Cottage** – Spa Cottage; is an attractive 3 bedroom, 2 bathroom cottage that sleeps 6 in comfort. For bookings please contact Rural Retreats at [www.ruralretreats.co.uk](http://www.ruralretreats.co.uk) or telephone 01386 701177



A warm welcome to our Saturday 5<sup>th</sup> August guest stalls including **Florian Poirot** for macaroons; **Annabelle's Farm Gate** for baking kits, luxury puddings & crumbles, baking; and **Stella Elson** for vintage style home accessories.

The August Market is also a fantastic opportunity to meet Ryedale's newly appointed Community Officer, **Melanie Holmes** & Community First Yorkshire.

The **Community Team** is responsible for Council services to local communities, dealing with all issues that arise in their areas and providing the link between the Council, partners and the community. **Community First Yorkshire** is a new organisation formed from two well-established charities: Rural Action Yorkshire (RAY) and the North Yorkshire & York Forum (NYYF). Community First Yorkshire provide practical support to voluntary and community organisations and social enterprises to help organisations or groups achieve its goals and better support their beneficiaries or residents.

**Hovingham Bowls Club** are operating the Community Café raising funds for the club. You can admire the pristine bowling green at the rear of the Village Hall and pick up some lawn tips.

Buy a minute and keep the chime in our time! The **Hovingham Village (Church) Clock Appeal** are raising funds to automate the winding of the clock. When 60 minutes have been purchased, the lucky winner receives £10.

Hovingham Market has a strong reputation locally and attracts regular visitors too who appreciate the "community feel" and our support for local food, products, arts and crafts. All of our stallholders enjoy conversations and answering questions from interested customers, and are happy to share their deep knowledge about the provenance of their products and the inspiration for their art and crafts. We have a new design for our Hovingham Market bags made from strong jute to carry your shopping. Please contact one of our volunteers if you'd like a bag. The bags cost £3 each or £5 for two and they last a long time.

Brilliant sunshine bathed the July Hovingham Village Market. To celebrate the start of Wimbledon fortnight, the Market and Tennis Club jointly sponsored free professional tennis coaching for children.

The Friends of Hovingham Primary School, operated the cafe, selling seasonal strawberries and cream. All the new guest stallholders did well, as did the Community Stalls 'Next Steps' and the 'Slingsby Duck Race'. Local musician, Josh, brought relaxing, acoustic harmony, much to the pleasure of Market visitors.

happy 8<sup>th</sup> birthday!

*We look forward to welcoming you at our August Market.*

**Caroline Davis**



Looking ahead, we have harvest to look forward to in September. In October, we celebrate the 8<sup>th</sup> anniversary of the creation of the Hovingham Village Market. We'll have more news about this in our October issue.

### Thundercliffe's

TRY THUNDERCLIFFES THUNDEROUS FISH BOXES

Try a months supply of fish of your choice or a catch of the day fish box. No minimum or maximum amount  
Hovingham Deliveries Thursday's 12 - 4pm  
or see me at the Hovingham Village Market.



Telephone or Text 07948 502476

FACEBOOK TWITTER [www.thundercliffes.co.uk](http://www.thundercliffes.co.uk)



Beef, Lamb & Pork - Free Range Eggs - Fresh Seasonal Vegetables  
Choice of Sausages, Burgers and Sweet Cured Hams  
Fresh Turkey and Chickens Available for Christmas  
Orders taken NOW

**We are only 2 miles West of Hovingham**

Everything we sell is grown or  
born & reared on our farm



**THE WALL, COULTON**  
CORNER HOUSE FARM, COULTON, HOVINGHAM, YORK

OPEN 24 HOURS, 7 DAYS A WEEK

PHONE: 01347 888293 [www.thewall-coulton.co.uk](http://www.thewall-coulton.co.uk)





*Bringing a different perspective to the Hovingham Market*

*- photos kindly provided by Robert Wainwright - using a drone.*





**Reflections:** *by Ian Ross*

TODAY, 72 years since a major war, understanding of the impact of war on families has faded but, in the 1930s, terrible memories were still raw. The names on the war memorials were all familiar. Mothers remembered the dreaded weekly casualty lists at local Post Offices. Virtually every mantelpiece photograph included someone in uniform.

Ian's family, like so many, was heavily involved. His father Ramsay joined the Honourable Artillery Company straight from school and was fighting within weeks. Grandfather David Anderson, a merchant navy captain, sailed from Hamburg the day before war broke out, shadowed by a German minelayer. The next day, the Royal Navy sank his pursuer; later, David was torpedoed but survived.

Ian's grandmother in Liverpool would not believe a telegram saying his Uncle Charlie in the Liverpool Regiment was lost, buried in the mud of Passchendaele; he was dug out alive after four days but never fully recovered. He was later employed by Uncle Gordon who had served in The Lothian & Border Yeomanry in Mesopotamia. Uncle William served as an army doctor. Back home, in Liverpool, Ian's mother had been bombed repeatedly and would go indoors to avoid the sight of a Zeppelin.

Respect for the fallen and wounded was strong. Ian remembers Armistice Day 1936 when his father stopped their car in central Newcastle at 11:00 and got out - as did every other car, truck and bus for two minutes silence. Unable to work, many sold matches on the streets. Ian's father always bought the matches, no matter how many he already had. Long term care for the wounded was scarce then. Today, Ian feels that the Poppy is not only to honour past casualties but also to provide some of that care. In the many smaller conflicts since 1945, huge advances in saving the wounded have increased the number needing the Royal British Legion's help. Check out the astonishing range of RBL support before deciding how much to donate for your Poppy in November.

[www.britishlegion.org.uk/get-support/](http://www.britishlegion.org.uk/get-support/)

***From Hovingham's War Memorial:***

**ARNOLD COULTAS**, the son of George and Lucy Coultas, a draper's apprentice living in Slingsby.  
He died in France on July 5 1916, aged 22.

**REGINALD COULTAS** was a waggoner, living in Fryton and working on Thomas Leefe's farm.  
He died in Belgium on October 9 1917, aged 27.



*The*  
**WORSLEY ARMS**  
*Hotel*  
EST. 1841

An exquisite, timeless country house setting  
with open log fires and stylish furnishings.  
All bedrooms have private bath, telephone, TV and room service.  
Four-poster suite for special occasions.  
Main Street Hovingham, York. Tel 01653 628234  
[www.worsleyarms.co.uk](http://www.worsleyarms.co.uk)

**Hovingham Fireplaces**

Worsley Arms Business Park,  
Hovingham, York, YO62 4LA  
Phone: 01653 628222

**Fireplaces  
Multi Fuel Stoves  
Marble & Granite  
surrounds  
Gas Fires,  
Stone Fireplaces  
Granite Worktops**

[www.hovinghamfireplaces.co.uk](http://www.hovinghamfireplaces.co.uk)



[www.edgemoor-vets.co.uk](http://www.edgemoor-vets.co.uk)

**EDGE MOOR**  
VETERINARY PRACTICE

Dedicated small animal practice in modern purpose-built premises.  
Our friendly team of four vets, four fully qualified nurses and support staff are all committed to providing the best possible care for your pets. We are your pets' GP, surgeon, dentist and midwife.



With branches at Kirkbymoorside & Pickering

[www.edgemoor-vets.co.uk](http://www.edgemoor-vets.co.uk)



As I write this I have not started harvest as I do not have any Winter Barley or Oilseed Rape. Combines have begun to roll out into the barley fields and then the oilseed rape will be next. Early indications are that barley yields are not too bad but quality isn't brilliant. I am sure that will not be the case for everyone and there is still quite a bit to cut.

My first crop to be cut will be oats but they are still at least couple of weeks away from being ripe. I intend to spray them with Glyphosate (Roundup) when they are about ten days from being ripe. This will kill off any plants or weeds that are still green and make it easier to combine. The grains of oats can often be ripe and dry yet the straw still quite green so spraying the crop will help to even it up.

This time of year is when my Countryside Stewardship areas need to be maintained. I have quite a lot of grass margins which run alongside water courses and woods which need to be cut just once a year. Other areas where I have established species rich semi natural grassland will be cut later after the flowers have seeded. This will allow some seeds to return to the soil therefore maintaining the large selection of flowers for next year.

It has just been announced by the Government that we are "going to have to earn our subsidies" in the future. The devil will be in the detail as usual but I would argue that the majority of farms already do a lot through stewardship and voluntary schemes.

Certainly if you walk around our area it is not difficult to see a wide range of flora and fauna in abundance. A chap from the village showed me a picture of something swimming in the beck below Hovingham. Despite our best efforts and consulting with the AONB (area of outstanding beauty) we can't decide if it was a mink or an otter but the best guess is mink. Next time get a better picture Phil!

One thing is for sure, any future scheme will be very bureaucratic and keep civil servants in jobs. I would guess that the majority of farmers would like to do away with the payments and just get paid a fair price for the produce. However that would mean the Government would have no way to control us as they then couldn't threaten to take the payments away! It's the carrot and stick scenario!

Despite all the red tape and jumping through hoops it is still a great job to do. The approach of harvest is always full of optimism and hope for good yields, good prices and reliable machinery. Watch this space...!!

**Mark Wilson**



*Wild Bird seed plot which contains:  
Quinoa, Triticale, Kale, Fodder Radish and White Millet.*

### Rainfall - Hovingham (in mm)

	Jan	Feb	Mar	Apr	May	Jun	Jul	Aug	Sep	Oct	Nov	Dec	Total
<b>2011</b>	43	68	6	2	41	52	48	112	25	67	28	66	<b>558</b>
<b>2012</b>	49	16	20	148	48	102	110	76	113	97	137	122	<b>1038</b>
<b>2013</b>	57	24	52	14	83	48	26	55	57	90	55	57	<b>620</b>
<b>2014</b>	127	58	38	23	35	54	52	94	29	72	108	48	<b>838</b>
<b>2015</b>	26	20	36	21	89	15	79	67	72	71	110	151	<b>757</b>
<b>2016</b>	87	54	93	82	24	61	41	68	31	43	82	27	<b>693</b>
<b>2017</b>	32	73	44	13	43	122							
<b>Avg</b>	<b>62</b>	<b>44</b>	<b>41</b>	<b>49</b>	<b>55</b>	<b>63</b>	<b>56</b>	<b>68</b>	<b>56</b>	<b>74</b>	<b>72</b>	<b>66</b>	<b>706</b>

\* High rainfall in June, very very high. Yet some very hot days as well. Sunshine and showers - oh to be in England.

Avg - figures calculated from 1997 to 2016

Figures reproduced with the permission of Robert Wainwright

### Need help with your Computer?

Internet, hardware, software, upgrades, repairs, tuition, or simply an introduction to your PC... sorted in your own home.

### Underwood Computer Services

Martin Underwood 01653 619293 or 07748 632563

40 people of all ages attended Hovingham Church's first Pet Service, held in the churchyard. Also in attendance were a wide variety of dogs and one sheep and one donkey. The service, led by our Rector, Revd Martin Allwood, was supported by a musical trio of a keyboard, a trumpet and a saxophone.

All the animals appeared to appreciate the Rector's blessing, and the hymns, prayers and sermon all reflected our need and love of our pets. Refreshments were enjoyed by all. It was good to see the head teacher of Slingsby School together with a number of her pupils attending the service.

Very many thanks to Graham and Jackie Mason and to all those who worked so hard to make this innovation so successful.

*Eddie Lucas*



## Coffee in the Garden



A very big thank you to Rob and Giles, Sir William and Lady Worsley and Richard and Jane for kindly opening their gardens this year.

This and the generosity of the people who attended, has enabled us to raise approximately £700 towards the Church repair fund.

I am looking for gardens large or small for 2018!

I have a few suggestions but I am always looking for new ideas. Do contact me if you would be happy to participate.

*Jackie Mason 01653 628386*



# HOVINGHAM Village Market



50 Local Stalls Championing Local Producers

Duke of York  
Community  
Initiative  
Award Winner

Yorkshire Farmers'  
Market  
of the Year



Next Market  
5<sup>th</sup> August

2<sup>nd</sup> September

7<sup>th</sup> October

4<sup>th</sup> November

2<sup>nd</sup> December

16<sup>th</sup> December

10:30<sup>am</sup> to 1:30<sup>pm</sup>

[www.hovingham-market.org.uk](http://www.hovingham-market.org.uk)



According to British Cycling, women cyclists have increased by 723,000 in the last 4 years, with a target of a 1,000,000 increase by 2020.

This target was thought laughable 4 years ago ....

Since the **Tour de France** took to the roads in Yorkshire in 2014, it has ignited Road Cycling in the UK and among the results is the ever more popular **Tour de Yorkshire** which has passed nearby but not through Hovingham.

An astonishing 2.2 million people went out to watch the race pass this year and cycle art has flourished, bringing colour and a smile to many faces.

The **Tour of Britain** takes place 3rd - 10th September, sadly not taking in Yorkshire this time.

But passing through is the **London - Edinburgh-London Cycling Challenge** - see if you can spot any of these hardy riders - see details to the right.

And, most cycling is not for elite riders, try a local club for their fun rides or charity rides.

*Ann Chapman*

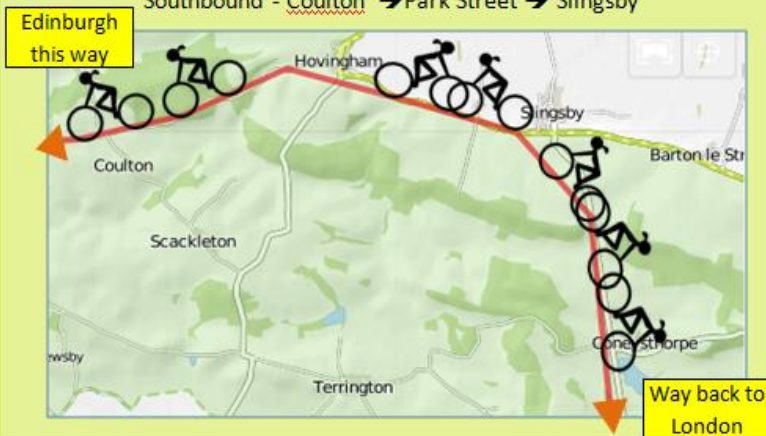
## LONDON EDINBURGH LONDON

30<sup>th</sup> July to 4<sup>th</sup> August  
**2017**  
Cycling Challenge

The 2017 Cycling Challenge from London to Edinburgh, and back, will be travelling through Hovingham on their way to Edinburgh and way back to London. **1,436 km long** and **11,128m of climbing**. This is not a race and cyclists have 6 days to complete the ride, watch out for them!

Northbound - Slingsby → Park Street → Coulton

Southbound - Coulton → Park Street → Slingsby



# It's summertime ☀

## The FootMan

Chiropody ~ Podiatry

Alan Cawthorne. BSc (Hons) HCPC Registered.  
<http://alancawthorne.wix.com/thefootman>

### Services offered:

Nail care and Callus (hard skin) reduction  
Biomechanical assessments  
Custom, hand-made orthotics / insoles  
Diabetic and vascular foot checks  
Verrucae treatment and corn removal  
Fungal nail and Athlete's foot treatments



If you would like to book an appointment or discuss whether treatment would be suitable for you, please contact me.

### Home Visits Available

Covering Helmsley and all surrounding areas.

Every Friday at Bondgate Clinic  
16 Bondgate, Helmsley, York, YO62 5BR

**Tel: 01439 771196**

## THE PARK- hair, beauty and café

is family run with 30 years experience



We provide excellent hair & beauty treatments using top of the range organic products.

And a selection of gifts too. Pop in to see what we have to offer.

Gillian, Becky & Gemma, The Park, Park Street, Hovingham  
01653 628969

[info@theparkhovingham.co.uk](mailto:info@theparkhovingham.co.uk)

[www.theparkhovingham.co.uk](http://www.theparkhovingham.co.uk)

<https://www.facebook.com/Theparkhovingham/>

The Environment Agency has now cleared the beck outside Hall Farm Cottages. This should help water to flow more readily out of the village. Adjacent to Lavender Cottage further upstream, vegetation has been allowed to grow into the stream in the expectation that this will slow water flow into the village and back it up into the diversion channel above the village.

The Estate have been clearing the diversion channel, with support from the Parish Council, and further work is expected next year, this will continue to take flood water away from the village to the west and north.

**Flooding is possible.  
Be prepared.**



**Flooding is expected.  
Immediate action required**



**Severe flooding.  
Danger to life**



## The Village Hall Car Park

The Village Hall Car Park was given to the Village by the Worsley Family and maintenance is shared between the Parish Council and the Village Hall Committee, with some much appreciated help from donations received from car park users. The Car Park is used for many purposes, including:



- Bowls Club members
- Market, 800+ visitors
- Recycling area
- Tennis Club players
- Village Hall users
- Visitors to the village
- Walkers

Various projects are planned for the near future:

**Wall to Main Street** This is about to be restored; a project jointly funded by the Parish Council, Village Hall Committee and the Howardian Hills AONB. This is scheduled to take place in August, weather permitting.

**Recycling Area** The fence has been rebuilt, the area cleaned, the bins jet washed and new notices affixed. Please help by only depositing recycling in the appropriate bins, take everything else to the recycling centres in Wombledon, Malton or Strensall. Thank you to the Action Group and Ryedale Streetscene for this.

**Drainage** Unfortunately the level of the car park creates drainage problems; although a soakaway ditch was added a couple of years ago, this needs regular maintenance and cleaning. One manhole cover was needing urgent replacement, this has been done and three more delivered waiting to be installed.

**Old Bowls Pavilion area** The Market planted trees on the site of the old Bowls Pavilion and the Parish Council plan to improve the car park surface here and where the Market Shed was located.

**Thank you to everyone we has helped maintain the Car Park and to those who donate to its upkeep**

**Phil Chapman**

Hovingham with Scackleton Parish Council  
**Welcome to Hovingham**  
**CAR PARK**  
**PLEASE HELP US TO MAINTAIN THIS CAR PARK**  
**SUGGESTED DONATIONS**  
**£1 HALF DAY £2 FULL DAY**

- Please park considerately
- All vehicles are parked at owners risk
- No liability accepted for any loss or damage to vehicles, or their contents

**Thank you for your help**  
**BOX CLEARED DAILY**



**Home too small  
to entertain?**

**There's a LOT  
more space  
at our place!**

**Hovingham Village Hall**

Call Janice on 01653 628952 or visit [www.hovingham.org.uk](http://www.hovingham.org.uk)



## Prehistory

At the end of the last ice age, the 255 foot deep Lake Pickering 30 miles long and 5-10 miles wide, filled the Vale from Helmsley and Hovingham out eastwards towards the sea. The lake laid down the fertile deposits found today. The high ground of Scackleton would have been a highly desirable real estate with 'charming lake views'.

## Neolithic 4000-2000 BC, Bronze Age 2000-750 BC, Iron 750 BC-43 AD

Early signs of habitation suggest that the landscape was already settled, cleared of forest and farmed, albeit not intensively. Local evidence from this time includes;

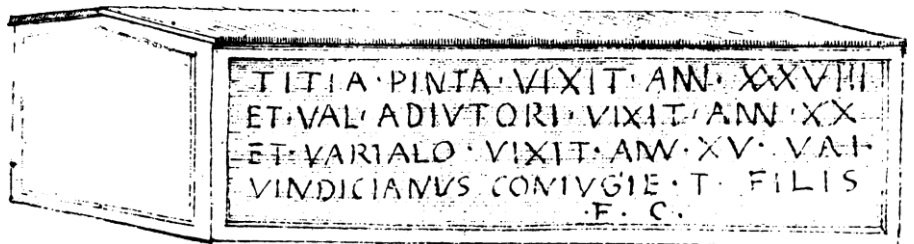
- Cross ridge dykes, track ways and enclosures, various Round Barrow remains, an Iron Age barrow cemetery, 4 enclosures, 22 small graves surrounding a round barrow, and a Bronze age round barrow excavated in 1864 revealed burnt remains and four collared urns and flint knife.
- From Hovingham; Late Bronze Age socketed and Neolithic sandstone axes
- From Scackleton; 3 Bronze Age axes and a hammer.

## Roman – 43AD to 410 AD

When the Romans defeated the local Parisi in AD72, the Vale of Pickering became the Roman Front Line for a time, with forts at York and Malton. A Roman vicinal way from Malton to Isurium (Aldburgh) passed through Hovingham, which is believed to have housed a fort (where the Hall now stands) for the protection of the road through the forest of Galtres. Local evidence for this includes:

- The remains of a Roman villa, Roman bath, tessellated pavement, hypocaust and coins found in 1745, during the building of the new Hovingham Hall.
- A Roman sarcophagus, found at nearby East Ness in 1616, was erected by Valerius Vindicianus (a 'General of the Forces of Upper Britain' who may have been the occupant of the Roman villa) to the memory of his wife, Titia, and two sons.

*Sarcophagus drawn by  
Sir William Dugdale about 1665  
and since lost*



- At Wath a Roman temporary camp of about 12.1 acres.
- A large conical barrow, Roman enclosures and field systems, 2 shards of Roman pottery, and a hoard of Roman Coin 44 silver siliquae from the 5th Century.

## Saxons from AD410 and Vikings from AD793

The early Christian churches were destroyed by Northmen and Danes. Prior to the Conquest, Hovingham was owned by the Saxon, Orm. In the reign of the pious Saxon King Edward the Confessor (1042 - 1066) rebuilding ruined churches was very fashionable, with builders giving place of honour to debris salvaged from earlier churches. Orm entered into this practice at Kirkdale church and St. Gregory's Minster and it was probably he, as landlord, who rebuilt Hovingham church.

Hovingham Church exhibits this recycling practice in its Saxon rebuild:

- In an oblong stone bearing eight figures in relief, with glories encircling their heads, in as many arched panels, thought to represent the Annunciation.
- In the Bell Tower, thought to include Saxon recycled stone and a tall lancet window in the tower was designed to let in the maximum amount of light from the south, and was probably where the priest lived.
- Above the semi circular headed west doorway is one of the oldest surviving Christian relics in Ryedale, the Anglian Cross, a wheel cross (associated with St Cuthbert) showing Danish or Scandinavian influence.
- The restored sculptured stone cross in the chancel mounted on a wrought-iron stand

**And then came the Normans ..... and you know ALL ABOUT THEM .....**

**Environment and Wildlife** - contact [Ann Chapman or David Richardson](#)

- No activity to report this month due to holidays, but many thanks to all the volunteers who have contributed this year in making the village a special place.

**Market** - contact [Peter Stark or Caroline Davis](#)

- The May & June markets had excellent visitor numbers in the region of 800 per market. Traders and visitors all appeared to enjoy the warm spring weather.
- Any Community Group wanting to run a Community Stall should contact the Market Group.
- Market News is published prior to every Market; you can subscribe via the website to receive your own email copy.
- **Regular and occasional volunteers are very much appreciated to help with the many tasks involved in making this such a successful enterprise.**

**Playground** - contact [Ann Chapman, Carol Battersby, Rosemary Stewart or David Richardson](#)

- Regular checks and maintenance is carried out. There was a problem with the Zip wire, which had to be fenced off for a few days but this was kindly repaired by Image Playgrounds.
- A refurbishment of the wooden train is being carried out to prolong the life of this well used piece of equipment.
- The cost for inspections, repairs, regular maintenance of equipment, grass & hedge cutting all diminish funds. The Playground is run by volunteers and requires regular attention and checks so standards remain high. We rely on volunteers to help out, so many thanks to the volunteers who contribute their valuable time in making the playground a pleasant place for children and accompanying adults to use.
- **Please contact us if you would like to be involved in the various initiatives that take place. Donations, however small, are always greatly appreciated.**

**Neighbourhood Watch** - contact [Phil Chapman or David Richardson](#)

- In May an attempted break-in occurred in the village. The perpetrator did not gain access but incidents like this are a worry for the residents concerned. Everyone is encouraged to report to the police anything they see which is in anyway suspicious. Please keep your eyes and ears open and keep the village safe for both yourself and your neighbour.
- **You can subscribe to regular email Neighbourhood Watch alerts by subscribing on the Village Website.**

**Newsletter** - contact [Ann Chapman, Caroline Davis or newsletter@hovingham.org.uk](#)

- The newsletter is delivered to every house in the village and is an excellent source of local information, news and comment. The editorial team welcome articles sent in. Copies are also available on the Village Website and you can subscribe to receive copies by email.
- **Please contact us if you would like to help write, edit or distribute the Village Newsletter.**

**Website** - contact [Phil Chapman, Caroline Davis, Janice Wood or David Richardson](#)

- Anyone can subscribe to receive the Weekly Village Diary by email; please subscribe on the village website.
- Details of events of interest to residents are welcomed for inclusion on the Village Diary and Website. Please email [events@hovingham.org.uk](mailto:events@hovingham.org.uk) with details.
- Local businesses and Community Groups are encouraged to send us details, or updates for their entry on the site.

**Volunteering** - contact [Ann Chapman, Caroline Davis or David Richardson](#)

- The Action Group always welcomes new volunteers. If you would like to help, just for an hour or so, to enable Hovingham to remain a special place to live please get in touch. Contact any of the groups directly or via an email to [action@hovingham.org.uk](mailto:action@hovingham.org.uk)

*David Richardson, July 2017*



**Planning a new  
indoor activity?  
Our discounts  
can help!**

**Pilot session for regular use - up to 100% off !!!  
Residents or regular use - up to 25% off**

Will it work? Will it be affordable? Will the first session succeed? The only way to know for sure is **to try it and see.** Your Village Hall would like to help you. Give us a call - we can offer practical advice and even advise on publicity.

**Your Village Hall supports new activities**

Call Janice on 01653 628952 or visit [www.hovingham.org.uk](http://www.hovingham.org.uk)



## NORTH YORKSHIRE COUNTY COUNCIL

from Councillor Caroline Goodrick

- First Council Meeting concentrated on roles and responsibilities. Cllr. Goodrick will be chairing the Ryedale Local Area Committee and is a member of various other committees (details on NYCC website)
- **£20m** has been given by Central Government for North Yorkshire Schools.
- Central Government has made money available for Highways, NYCC have made an application.

## RYEDALE DISTRICT COUNCIL

from Councillor Robert Wainwright

- No Group has overall control of the Council, making decisions is challenging.
- The Council has agreed a plan that goes to 2020.
- The current Chief Executive (Ms J Waggot) leaves her post on 16<sup>th</sup> Sept, to work for Selby District and NYCC. A decision on the future Management of RDC needs to be made.
- Double chevron warning signs have been erected on the Meady Hill corner.
- The Land Drainage Liaison Group Meeting; Sir William is in talks regarding various flood prevention measures that may take a number of years to implement.
- Pasture Lane Surfacing; NYCC has drawn up a specification and tenders close(d) on 7<sup>th</sup> July.
- Pasture Lane Open Spaces Fund; The Playground has £704.50 remaining and the Tennis Club has £246.00. It was proposed that the Playground be invited to apply for a remaining £1,000.

## RYEDALE DISTRICT COUNCIL

from Community Officer Melanie Holmes

- Outlined her area Ampleforth, Amotherby, Hovingham and Sheriff Hutton wards.
- The Interactive Map has been launched for Amotherby; the Hovingham Ward is next. Community First Yorkshire Officer Maggie Farey and Ms Holmes will be working in the project.

## HOVINGHAM

**Action Group** A report is available on website

**Cemetery Wall Repairs** It was agreed to see if Mr C. Marwood if he would be interested in doing the work.

**Pasture Lane** Details on surfacing and open spaces fund are included in Cllr Wainwright's report.

**Ryedale Interactive Map** Ms M. Holmes and Community First are attending the August Market to launch the project. The Action Group would be involved in listing Hovingham items to be mapped and reporting progress.

**Top Green** Missing posts to be replaced and all posts and railings to be repainted.

**Wath Quarry** has re-opened and the voluntary agreement regarding wheel washing and speed through the village re-instated.

**Flooding** The Environment Agency cleared the beck opposite Hall Farm Cottages (today). Ms Holmes is helping Bakery to get grant for a flood gate.

## GENERAL

**Village Hall (VH) Constitution** A meeting of Hovingham Estate, the Parish Council, Community First Yorkshire (CFY) and the VH Committee was held on 19<sup>th</sup> June to discuss the concerns of the Council regarding the new VH Constitution. It was agreed:

- the new Constitution must include all the obligations of the 1930 Conveyance
  - the template CFY Constitution must be used as basis
  - a majority of the VH Committee, and a majority of residents present at a village meeting, must agree to any proposal to sell the property
  - use of the property as security for borrowings is very unattractive and unlikely to be possible
  - any Community Group would be able to nominate members to the VH Committee
  - the Parish Council own the car park land
- Notes of the meeting, agreed by the Parish Council, are available on the website.

**Village Hall Car Park** Responsibility for its maintenance is shared between the Council and the VH Committee. A working paper has been circulated and is on the website. It was agreed:

- purchase manhole cover already installed (£118)
- purchase three more (£294) and installed (£90)
- drainage ditch gravel will be cleaned annually and replaced if necessary.
- installation of electricity to the Market Shed was approved subject to report from Electrician.
- weed killing would be carried out
- Action Group has agreed to repair recycling area fence, clean up area and replace signage.

**NYCC Parish Portal** will allow Highway problems to be reported and monitored by the Parish Council. Only potholes deeper than 40mm will be repaired.

## SCACKLETON

- Report on last meeting currently unavailable. The summer soiree has been cancelled.
- HGV Signs; Cllr W Swann outlined problems and lorries having to turn back when road narrows.
- Coulton Mill has been damaged by large vehicle.
- NYCC Cllr Goodrick will make enquiries if simplified signs could be installed.

## FINANCE

**Report** presented and available on website.

**Public Inspection of Accounts** currently in progress and ends on 14<sup>th</sup> July.

**RDC Chairman's Appeal** it was agreed to donated £50 for Ryedale Charities Together.

**Notices** it was agreed to spend £36 on some new dog fouling and playground car parking signs.

## NEXT PARISH COUNCIL MEETINGS

- Next meetings on September 13<sup>th</sup> and November 8<sup>th</sup>
- Start at 7pm in the Hovingham Community Room
- All are very welcome, full details are on the website



## August 2017

1 <sup>st</sup> Tue	<b>Garden Waste Collection</b> - Garden Waste Bin
2 <sup>nd</sup> Wed	<b>Next Steps for Hovingham</b> - 1pm to 3pm Hovingham Village Hall. Join us for a delicious cream tea Next Steps work to support people through those everyday difficulties that come sometimes over whelm us.
3 <sup>rd</sup> Thur	<b>Hovingham Bowls Club - Social Bowling</b> - from <b>7pm</b> -Hovingham Bowls Club (see below)
5 <sup>th</sup> Sat	<b>Hovingham Village Market - 10:30am to 1:30pm</b> - Hovingham Village Hall Please come along and support the Market; Hovingham Bowls Club will be running the Community Café. <b>Scackleton Bonfire Party - 6:30pm to 7:30pm</b>
6 <sup>th</sup> Sun	<b>Hovingham Matins</b> - <b>10:30am</b> Hovingham Church <b>Methodist Service</b> - <b>10:30am</b> Hovingham Chapel, Revd. Tanya Short, Holy Communion
7 <sup>th</sup> Mon	<b>Landfill Waste Collection</b> - Green Bin <b>Supermobile Library in Hovingham</b> - <b>5pm until 7pm</b> - Location Hall Green
10 <sup>th</sup> Thur	<b>Hovingham Tea Spot - 10:30am to 11:30am</b> Rolling Pin Café -Organised by Hovingham Methodist Chapel Join us on the 2 <sup>nd</sup> Thursday each month for a cuppa, chat and company. <b>Hovingham Bowls Club - Social Bowling</b> - from <b>7pm</b> -Hovingham Bowls Club (see below)
13 <sup>th</sup> Sun	<b>Combined Service on the Green - 10:30am</b> - SLINGSBY <b>Methodist Service</b> - <b>10:30am</b> Hovingham Chapel, R. King
14 <sup>th</sup> Mon	<b>Recycling Collection</b> - Recycling Bins
15 <sup>th</sup> Tue	<b>Garden Waste Collection</b> - Garden Waste Bin
16 <sup>th</sup> Wed	<b>Next Steps for Hovingham</b> - 1pm to 3pm Hovingham Village Hall
17 <sup>th</sup> Thur	<b>Hovingham Bowls Club - Social Bowling</b> - from <b>7pm</b> -Hovingham Bowls Club (see below)
20 <sup>th</sup> Sun	<b>Benefice Eucharist</b> - <b>10:30am</b> Barton le Street <b>Methodist Service</b> - <b>10:30am</b> Hovingham Chapel, A. Hudson
21 <sup>st</sup> Mon	<b>Landfill Waste Collection</b> - Green Bin <b>Supermobile Library in Hovingham</b> - <b>5pm until 7pm</b> - Location Hall Green
24 <sup>th</sup> Thur	<b>Hovingham Bowls Club - Social Bowling</b> - from <b>7pm</b> -Hovingham Bowls Club (see below)
27 <sup>th</sup> Sun	<b>Benefice Eucharist Service - 10:30am</b> - Scackleton Church <b>Methodist Service - 10:30am</b> Hovingham Chapel, Local Arrangement
28 <sup>th</sup> Mon	<b>Bank Holiday Monday - Car Boot Sale</b>
29 <sup>th</sup> Tue	<b>Recycling Collection</b> - Recycling Bins <b>Garden Waste Collection</b> - Garden Waste Bin
30 <sup>th</sup> Wed	<b>Next Steps for Hovingham</b> - 1pm to 3pm Hovingham Village Hall

## September 2017

2 <sup>nd</sup> Sat	<b>Hovingham Village Market - 10:30am to 1:30pm</b> - Hovingham Village Hall Please come along and support the Market; Hovingham Action Group will be running the Community Café.
3 <sup>rd</sup> Sun	<b>Hovingham BCP Eucharist Service - 10:30am</b> Hovingham Church <b>Methodist Service - 10:30am</b> Hovingham Chapel, Revd. Tanya Short, Holy Communion <b>Landfill Waste Collection</b> - Green Bin
4 <sup>th</sup> Mon	<b>Supermobile Library in Hovingham</b> - <b>5pm until 7pm</b> - Location Hall Green <b>Start of School Autumn Term</b>
5 <sup>th</sup> Tue	<b>Hovingham Women's Fellowship - Hovingham Village Hall - 7pm</b> A talk by Brian Oxberry on Charles Dickens in Yorkshire. Visitors £1. Members, it will be time for your subscription to be paid, which is now £10 to cover donations to our speakers or favourite charity.
10 <sup>th</sup> Sun	<b>Eucharist Service - 10:30am</b> - Hovingham Church <b>Methodist Service - 10:30am</b> Hovingham Chapel, R. King
11 <sup>th</sup> Mon	<b>Recycling Collection</b> - Recycling Bins
12 <sup>th</sup> Tue	<b>Garden Waste Collection</b> - Garden Waste Bin
13 <sup>th</sup> Wed	<b>Next Steps for Hovingham</b> - 1pm to 3pm Hovingham Village Hall
14 <sup>th</sup> Thur	<b>Hovingham Tea Spot - 10:30am to 11:30am</b> Rolling Pin Café Join us on the 2nd Thursday of each month for a cuppa, chat and company. Organised by Hovingham Methodist Chapel.
17 <sup>th</sup> Sun	<b>Hovingham Morning Praise - 10:30am</b> Hovingham Church <b>Methodist Service - 10:30am</b> Hovingham Chapel, A. Hudson
18 <sup>th</sup> Mon	<b>Landfill Waste Collection</b> - Green Bin <b>Supermobile Library in Hovingham</b> - <b>5pm until 7pm</b> - Location Hall Green
21 <sup>st</sup> Thur	<b>Deadline for the next Newsletter (October Issue)</b>
23 <sup>rd</sup> Sat	<b>Dolce Vita - Italian Night Dining - 7pm</b> - Hovingham Village Hall Join us for a night of authentic Italian cuisine; Tickets £15 per adult, £10 children under 12 Tickets from Annise or Michelle on (01653) 627184, email m.bertucci@btinternet.com All proceeds towards 2018 Volunteer Trip to Kenya by Annise Bertucci
24 <sup>th</sup> Sun	<b>Harvest Celebration with Slingsby Chapel - 10:30am</b> - Hovingham Church <b>Methodist Service - 10:30am</b> Hovingham Chapel, Local Arrangement
25 <sup>th</sup> Mon	<b>Recycling Collection</b> - Recycling Bins <b>Garden Waste Collection</b> - Garden Waste Bin
27 <sup>th</sup> Wed	<b>Next Steps for Hovingham</b> - 1pm to 3pm Hovingham Village Hall

## These Events normally take place weekly (except bank holidays)

<b>Monday</b>	<b>Stretch &amp; Flow Class - 11:15am-12noon</b> Hovingham Village Hall - Aimed at all abilities; Contact Katie Mae Ellis (07515) 406097 or katie_mae3@hotmail.co.uk for further details <b>Hatha Yoga 5:30pm-6:30pm</b> - Hovingham Village Hall-for all ages, abilities & flexibilities ! £8 per class or £35 for 5. Mats provided and booking essential. Please contact Verity (07821) 588117 vez_4@hotmail.com
<b>Tuesday</b>	<b>Hovingham Primary Tennis After School Club (except School Hols) 3:45pm-4:45pm</b> <b>Scrumptious Fish &amp; Chip Van - 5:35pm</b> Hall Green, opposite Village Hall
<b>Thursday</b>	<b>Ryedale Family History Group - 10am to 3pm</b> - Hovingham Community Room Drop in any time; Further details available from www.ryedalefamilyhistory.org <b>Hovingham Fresh Fish Delivery</b> - between <b>12noon and 4pm</b> in and about Hovingham Please contact Peter Thundercliffe on (07948)-502476 if you would like fresh fish delivered <b>Hovingham Bowls Club - Social Bowling</b> - from <b>7pm</b> - at Hovingham Bowls Club We are a friendly club of bowlers of mixed ability so please come along <b>GIVE IT A GO</b> and help to preserve bowling in a small village Club. For further information contact either Ian Battersby (01653) 628388, Malcolm Hutton 628222 (work) or 628493 (home) until 24 <sup>th</sup> Aug
<b>Friday</b>	<b>Pilates Class - 10:45am</b> for one hour - Hovingham Village Hall run by Tracey Prest All Welcome; Further details available at www.pilateswithtracey.co.uk or (07789)-990261