

# The Hovingham and Scackleton Newsletter

February 2016

## Welcome to the Hovingham and Scackleton Newsletter

Welcome to our first issue in this wet and windy 2016, which, of course, features how we in Hovingham experienced the highest rainfall for years. 151 inches fell in December, including 3 on Christmas and Boxing Day, causing the beck and the surrounding fields to flood. Thanks to Eddie Lucas and Mark Wilson for their vivid accounts of the flooding and of how family and neighbours really worked to reduce the damage. Thanks also to David Davies for keeping us up to date on fracking with his very helpful and factual report on the recent Joint Scrutiny Meeting at Northallerton. Turning to happier news, this issue is also full of accounts of the fundraising events over Christmas at the Church, the lunch party in the village hall, events at the school, the work of the Action group and the village hall committee and the continuing success of the market. None of this could happen without the hard working volunteers, of which more are always needed. Well done, and a Happy New Year to all our contributors and readers.

*Maraaret Bell.*

## New Bus Timetable from April 2016

The Parish Council has been advised by NYCC that they are negotiating a new contract with Stephenson's for the buses servicing Hovingham from **April 2016**. The proposal is to:

- **Remove the service to and from Helmsley**
- **Reduce the Malton service to a two-hourly frequency**

The Parish Council have suggested an alternative timetable that would improve the usability of the remaining buses and trains from Malton.

Further details will be published in the weekly email diary ([events@hovingham.org.uk](mailto:events@hovingham.org.uk)) when known.

Hovingham	0815	1010	1210	1410	1610
Malton	0840	1035	1235	1435	1635

Malton	0945	1145	1345	1535	1735
Hovingham	1010	1210	1410	1605	1800

Note that some services may vary slightly on Saturdays and School Days

## Hovingham Social Committee - Christmas Lunch Party

This truly festive event was attended by over forty local residents. The village hall was transformed with decorations and beautifully laid out tables. It all looked ready for a party....and what a party it was.

The traditional Christmas lunch was beautifully cooked, presented and served by staff from the Malt Shovel. Chef, Jamie, in his pristine white coat and the smiling staff looked after everyone with ease. The turkey was moist and the Christmas pud had to be tasted to be believed. We were missing nothing.



After lunch, Jean Ellis cut the Christmas cake. Jean has been involved with the organisation and fund raising for this event for more years than she would care to admit. Thank you Jean.

Guests then kept their eyes on their raffle ticket, hoping they would be a winner. The first prize went to Mr Blades.



The party continued with Mrs Horne reading nativity stories, which were perfectly matched with Mrs Skelton playing the music for carols. Every one joined in with the singing. Finally, in true tradition the roof was raised with Auld Lang Syne. Sadly, all good things must end, but on reflection, how lucky are we to live in a village with such a community spirit?

*Karen Rutter*

### URGENT APPEAL

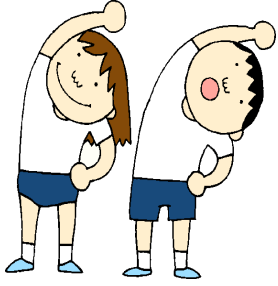
The Hovingham Social Committee are urgently seeking anyone willing to continue the fundraising and organising of the Christmas Lunch for our older eligible residents.

Please contact Teresa Ellis 628699 or Karen Rutter 628830

**Contact: [newsletter@hovingham.org.uk](mailto:newsletter@hovingham.org.uk) or (01653)-628364**

Published and © 2016 by The Hovingham & Scackleton Newsletter Group. Views are not necessarily those of Group or Parish Council

## Start your year with Stretch & Balance



Looking for some motivation to get fit in 2016?!

Come and join us for stretch and balance on Monday mornings Hovingham Village Hall 11.15am, open to all ages and abilities.

Or get in touch for one to one sessions or group sessions, and I can help you towards achieving your goals. For more info or to book a session/class space call

Katie Mae on 07515 406097

## Hovingham Church News

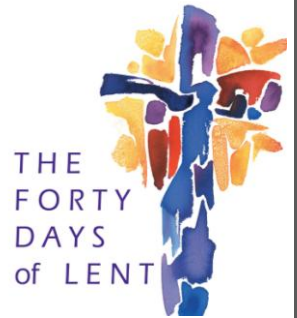
### Can you help ?

The Hovingham Parochial Church Council is looking for someone to act as secretary after our longstanding secretary Susan Wainwright stands down in April. Please contact Jane Richardson - Church Warden - for more information. Phone: 628 021 Email: drprichardson@btconnect.com

### Lent

This year is early and the Ash Wednesday Ashing service will be held at 7.30pm on 10th February at Slingsby Church. We are contemplating holding a Lent course but specifics are not finalised at the time of going to press; please consult local church service sheets for further details.

*Eddie Lucas.*



## Fracking Fundraising Event - Saturday 5th March

Hovingham Village Hall - YO62 4LF

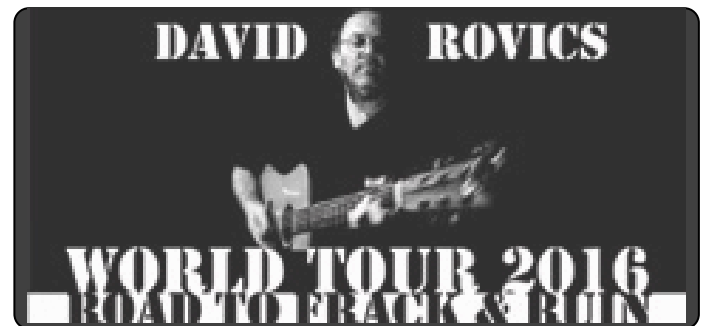
Saturday 5th March at 7pm - Tickets £10

### Also Performing

Uncle Paf (Ancient Punk)

Kate Fox (Stand-up and Poet)

Call Mick Johnston **01723 850041** for details



## The first since the Reformation

# An historic Mass with Bishop Terry



## All Saints Parish Church, Hovingham

By very kind permission of the Anglican Street Parishes, Arch-Diocese of York

**Tuesday, February 2nd 2016, 7.00pm**

to be celebrated by

**The Rt. Rev. Terence Drainey, Bishop of Middlesbrough**

We cordially invite our Anglican and Methodist friends to join Bishop Terry and the Ampleforth & District Catenians, for the first Mass to be celebrated here since the Reformation.

Rob Thompson Email : ardnamurchan75@btinternet.com

## Tennis Club - Junior Coaching

Tennis Coaching for Juniors at Hovingham Tennis Club

During Half-term - February - Monday 15th to Friday 19th

5-10 year olds

Monday-Thursday 2-3pm

Friday 10-11am

11-16 year olds

Monday-Thursday 3-4pm

Friday 11-12am



Rackets can be provided and previous tennis experience is not needed. Coaching provided by Mark Franklin, a BLTA level 3 coach

Kindly subsidised by the Yorkshire Lawn Tennis Association (YLTA) at only £3 per hour

for an application form and further details please contact:  
Murray Stewart - Chairman Hovingham tennis Club;  
murray@murraystewart.co.uk 01653 628741



Looking back at 2015, the Hovingham Village Market had another successful year. Highlights included attracting over 1,000 market visitors to the April and August markets and an increase in the number of stalls bringing variety and interest each month. We were awarded Finalist North Yorkshire Best Community Project 2015.

The weather does make a difference. The November market was particularly wet and the first December market was extremely windy due to Storm Desmond. Our volunteers and core customers valiantly battled against the weather.

The Market has continued to support Community Stalls, made donations to community projects as well as the Cafés which have now raised some £58,000.

We've also increased our presence on social media. This has had a positive impact too in attracting new visitors and new stallholders.

At the AGM, the Chairman, Pete Stark, thanked all of the volunteers, the Market Managers and the Committee who make the market happen every month. Pete said what makes Hovingham Market special is the way we nurture emerging talent eg Jack the Saxophonist, our Market Apprentice Stone Mason and new stall holders; the successful vegetable sculpture, egg decorating and Find the Easter Hen children's competitions, Guess the Weight of the Band, free drinks for cyclists during the Tour de Yorkshire; and all the other initiatives and fresh ideas made possible by our committed team of volunteers.

Our next market is on Saturday 6<sup>th</sup> February. Look out for news about six new guest stallholders and if you were one of the lucky winners of our December Guess the Weight competition, you can collect your prize too.

If you'd like to volunteer or be added to our monthly news email, contact [themarket@hovingham.org.uk](mailto:themarket@hovingham.org.uk) or have a chat with any of the volunteers at the market. It will be one of our largest ever.



*Robin Lacey spreading Christmas Cheer*

Caroline Davis

## Upcoming Fundraising Events for the Church Roof



### Sunday the 8<sup>th</sup> May - On the Farm

Those of you that watch Country File on BBC 1 will have seen Adam Henson's rare breeds. Now you can visit a wonderful rare breed sheep farm in Hovingham. It will be lambing time so there will be a petting pen and a chance to get close to these wonderful sheep during your guided tour.

Anne and Robin Lacey of Aireyholm Farm own the Flitwick flock, rare breed sheep ranging from one of the most rare, the Leicester Longwools, to the Hebrideans and the Shetlands to name but a few.

The cost is £5 for adults and children are free. The entry fee will include tea and a slice of cake.

### Sunday 21<sup>st</sup> May - Singing Day at Hovingham Church

We have arranged a 'Singing Day' with Dr Simon Lindley from Leeds Minster. You do not have to be part of a choir and if you watch Gareth Malone's choirs they are often made up of people who have never sung before. The enjoyment they have is wonderful. You do not have to read music but just enjoy expressing yourself in song. It will be a great day starting at 10am and finishing about 4pm.

Cost £15. A booklet of music and tea, coffee and juice will be provided. Bring your own lunch, which you can have, in the marquee.

Other Summer events being planned are:

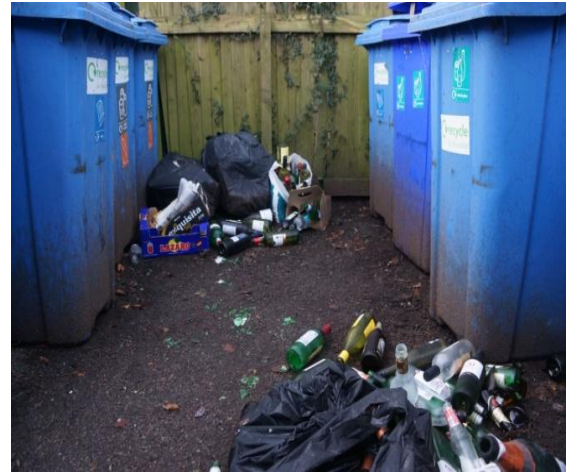
'Coffee in the Garden' over three Saturdays in different gardens.  
Swinton Brass Band - 'Concert in the Churchyard' with afternoon tea.



The Parish Council has received several complaints regarding the unacceptable state of this **Domestic Recycling Area** and they have decided that this area will **CLOSE** on March 12<sup>th</sup> unless those using it keep it tidy and commercial users stop using it.

The **Domestic Recycling Area** was kept open when Ryedale District Council's started kerbside collections several years ago to complement the RDC kerbside collections. The final decision will be made at the Parish Council meeting scheduled for March 9<sup>th</sup>. Residents are reminded:

- Please keep the area tidy and only use the area for domestic recycling
- Cardboard recycling can only be collected at the kerbside
- Commercial recycling waste **must not** be left at this area
- Further information on recycling is available from Ryedale District Council Street Scene or on their website [www.ryedale.gov.uk](http://www.ryedale.gov.uk)



## Fracking News - a journey through democracy

In my journey seeking facts about fracking, I have been slowly discovering how our democracy works.

On Friday 19<sup>th</sup> of January 2016 a Joint Scrutiny Committee Meeting was held at County Hall Northallerton. The Mineral Planning Authority - North Yorkshire County Council (NYCC) are currently going through the formation of their next Joint Waste and Minerals Plan (in partnership with the City of York and North York Moors Park Authority). The Joint Committee meeting was held as a direct result of the petition from Ryedale residents about fracking handed in to NYCC in March 2015, and it was discussed by the Ryedale Area Committee (a sub committee of NYCC) in June 2015 with the recommendation that it be discussed by the Transport Economy and Environment overview and scrutiny and the Scrutiny of Health Committee to inform the main policy committee of NYCC 'The Executive Committee' in respect of NYCC County Policy in relation to fracking.

The meeting was an all day hearing and heard evidence from Friends of the Earth, the UK Onshore Operators Group (UKOOG), Department of Energy and Climate Change (DECC), the Oil and Gas Authority (OGA), the Environment Agency (EA), the Health and Safety Executive (HSE), Public Health England (PHE) and Yorkshire Water (YW). The first part of the meeting was set aside for constituents' questions. Common concerns raised by the public included:

- the industrialisation of the countryside
- the amount of HGV traffic
- the risk of pollution to the air and our water supplies
- the effect on climate change, and methane emissions
- the growing evidence from countries who have used this form of gas production of health effects, warning signs etc in both humans and animals
- the concerns of continual drilling, noise, dust etc
- the potential negative effects on the two key industries in North Yorkshire: agriculture and tourism

At the end of the meeting, the following outcomes were agreed by the Joint Committee

- to ask all 'witnesses' to supply detailed bullet point answers to the questions that were not answered in the meeting, particularly questions unanswered by UKOOG and DECC
- the Committee compile their list of recommendations to inform the Executive Committee by the end of April 2016
- This will in turn enable the Executive to consider the Joint Waste and Minerals Plan consultation response and preferred policies by the end of May 2016.

There were many issues not dealt with in the evidence relating to lack of: spatial planning, regulations, hard numbers, financial guarantees; the impact on light, confusing information about the number of well protection layers, concerns about public health, well abandonment and lack of ownership, use of water and disposal of waste water.

However, possibly one of the most important issues at the meeting was the misunderstanding in the committee room about how the waste water would need treatment before it was suitable to be processed through a standard treatment facility (sewage works). YW said they only had two treatment centres that would be able to take such large volumes to go through the sewage works (Blackbird Meadows Sheffield and Nostrop Leeds). YW did say that if they weren't happy with waste water quality sent to them for disposal they would refuse to take it. What did not come out of the discussion was the fact that there are very few 3rd party companies with an EA licence to treat the contaminated flowback fluid initially.

It was clear that many of our County Councillors are concerned however it remains to be seen how they will advise the Executive Committee.

David R Davis Jan 2016



Well I could start by mentioning the weather but maybe I will save that until later!

Following on from my last article when I had just finished sowing all the crops, thoughts then turned to getting them sprayed. Although November is not really the best time of year to find suitable dry days to spray, it is better if the crops do get sprayed to kill weeds and protect them from bugs. Over three days I managed to get everything done but in a few places the tractor sank into the ground and left some deep ruts. It is never a good feeling when travelling along to suddenly feel the back wheels start to sink and the tractor start to go sideways. Fortunately I didn't get stuck and have to get a neighbour to pull me out. Think of the beer I would have to buy in the pub to keep that quiet! I decided that the benefit of getting all the spraying done out-weighed the one or two (maybe more) ruts I had made.

Once that job was complete, the sprayer was washed out and put away for the winter. To protect from the frost I put some antifreeze in it because there is always some water left in the system that you cannot drain out. Sprayers have to be MOT'd every year to check that they work fine and don't have any leaks or problems. Obviously it is good practice to continually check it throughout the year as it prevents any problems occurring. Chemical application is a costly job and badly maintained equipment can cause damage to crops and also we are ever more mindful to care for the environment.

I still have to move some wheat from the store although most of it has been sold. Trying to market grain this season has been challenging. Prices started off fairly good but then started to fall quite quickly. You never know how much grain you will have to sell as yields can vary considerably. We could not have predicted having such good yields and by the time harvest started the price dropped due to amount of grain in stores. It is a gamble whether to sell a little before harvest or wait until crops are in the store but by then prices could have dropped! So far I haven't found a decent crystal ball.

Well I suppose I should mention the weather! It won't have escaped anyone's attention that December was very wet. The really heavy rain started on Christmas Day and continued through into Boxing Day, totalling 3 inches in little over 24 hours and this was evident by the flooding along Beckside. I have never seen as much water in my fields as there was on Boxing Day. Every field below the Malton road had standing water in various quantities and as I write some is still there. I did try digging trenches to let it off but a lot was in low lying areas where only time will see it drain away. Crops can cope under water for a short time but dead plants are now evident as the water has receded. At least we have escaped better than some other parts of the country.

*Mark Wilson*



## National Recognition for Hovingham Gamekeeper

Stephen Clay of Hovingham was amongst only a handful of gamekeepers from throughout the country to earn a CLA Long Service Medal in recognition of 40 years' service. Stephen began as a gamekeeper aged 16 in 1975 on the Fitzwilliam Wentworth Estate in South Yorkshire, then moved to the Rothwell Estate in Lincolnshire before joining the Hovingham Estate in 1987. He and his wife Alison rear some 5,000 pheasants a year and for them game keeping is very much a family affair as their two sons, Ben and Matthew, are also gamekeepers on the nearby Duncombe Park Estate at Helmsley.

Stephen was presented with his medal by CLA President Henry Robinson and Lord Harewood at the CLA Game Fair, which took place at Harewood House near Leeds this summer. Henry Robinson said: "It is a great honour to present Stephen... with his Long Service Medal. Gamekeepers do an incredible amount of work for wildlife in the country and help to protect our cherished landscapes."

Stephen said: "For as long as I can remember I've wanted to be a gamekeeper and I feel very fortunate to have had such a long and rewarding career. I couldn't have done it on my own and I am very grateful to my wife Alison for all of her help and support over the years."

*Partly reproduced from the Gazette & Herald with their kind permission*





The rain started mid morning on Christmas Day and continued until Boxing Day afternoon resulting in 3 inches falling.

### Christmas Day

Mark Wilson monitored the beck level via Environment Agency (EA) website and liaised with John Anderson during the afternoon of Christmas Day. At 6pm they asked the EA to issue the flood warning due to the forecast and current level of the beck. At 7pm Mark and John checked the relief channel was working and found that the pipes under the road were almost at capacity.

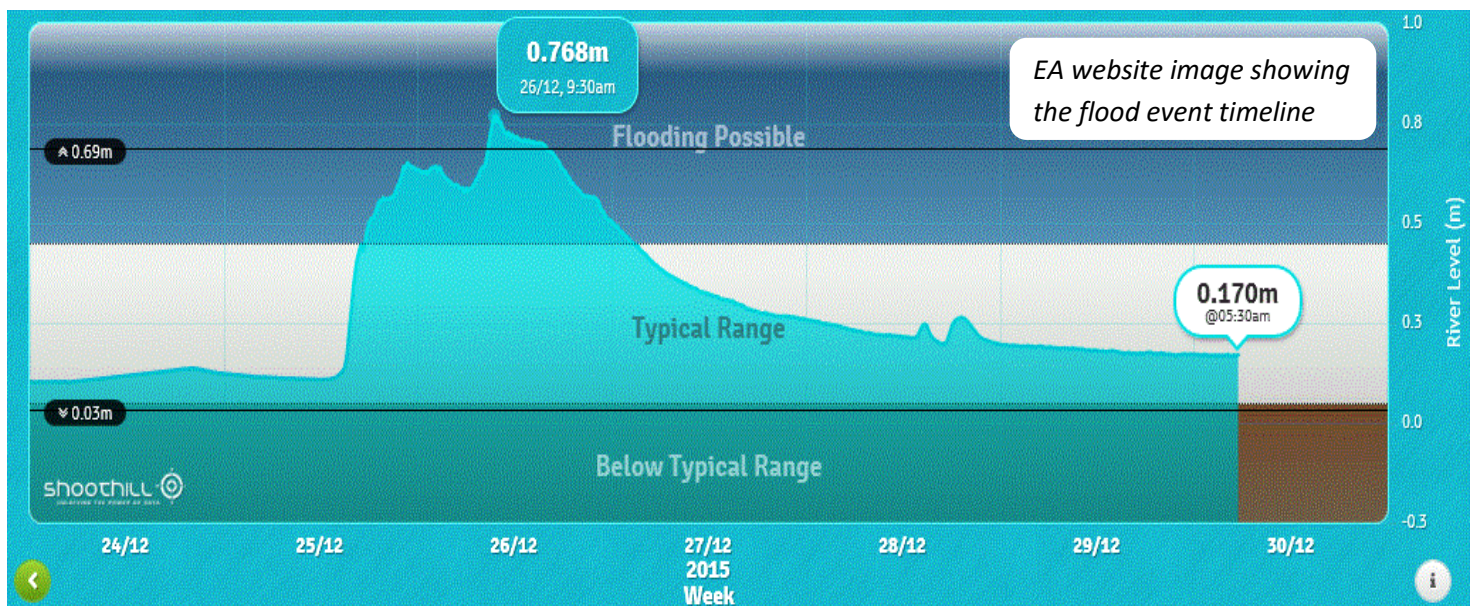
The beck continued to rise Mark collected a trailer load of sandbags and with the available volunteers began sandbagging. Bags went around the ford, at the side and front of the houses, at low points along the bank from the humpback bridge down to Harwood Cottage. Then the road drains were sandbagged to try and prevent water from backing up. Despite this, water formed in front of houses being a combination of surface water and drain back up. Four submersible pumps were put into use which helped. Sandbags were used to divert water running along the road towards the bakery bridge back into the ford. Sandbags were also put against doors and walls and residents with flood doors fixed them to their front doors. The beck stabilised around midnight and was within the limits of what we had experienced before.

### Boxing Day

However shortly after 8am on Boxing Day it rose suddenly and began to come over the banks. Quickly the volunteers put the rest of the bags along the beck side between the humpback and bakery bridges but it soon became clear it was a losing battle. Mark decided at that point (9.05am) to phone the fire brigade and EA for backup to inform them of the situation. The EA said there was nothing else they could do and phoning for the fire engine was the right thing.

Two fire engines arrived within 15 minutes and they said that pumping water was useless as where could it be pumped to? They said we had lost the beck so we should use the bags we had put on the banks to protect the houses and helped us to move the sandbags across. By this time the water was starting to go up driveways and round the back of houses. Doors and gates were bagged to try and hold the water back. There was little else that could be done. It seems that the peak was about 9.30am and despite it continuing to rain, the beck slowly started to go down. This may be due to it bursting its banks further upstream but it stopped any further problems in the village.

Although the flooding was the worst since 2000 when there was no relief channel, the water damage to properties this time was not too bad. Some damage to carpets occurred due to water seeping in but that was all.



### Can things be improved ?

The EA have been out since to get a report on what happened. They were very impressed that we coped so well with little damage. They asked if we needed any more sandbags and Mark requested another pallet and mentioned to them that Sir William suggested building up some of the banks by 6-9 inches at the low points from the humpback bridge down to Harwood Cottage. Mark also suggested fitting non return valves for the road drains. The EA noted the bridge to Pasture House is where water backs up. The EA will come out again and look at what they can do to help and pointed out that nothing can be done without their involvement.

Mark, would like to thank the team of volunteers who turned out to help. Some brought family members who were staying with them over Christmas. Without them the situation would have been a lot worse.

***And I think the community as a whole would like to sincerely thank all those that put the Flood Plan in place, organised volunteers and materials and did all the cold and dirty work on Christmas Day and Boxing Day. It is all part of living in Hovingham.***

What can you do about protecting your house against flooding if you are away, staying with family in Jersey over the Christmas period? The answer is not a lot, especially if family members have deliberately not told you that you are about to be flooded, trying to protect you from the anxiety that would follow. But even if you had of known, what could you do? It would have been impossible to have got back to Hovingham, as all the flights would have long since been fully booked over Christmas, and Condor ferries had cancelled sailings due to the bad weather. So the answer is, not very much. In fact nothing at all!

It is a time when you are dependant on the good services of neighbours and family. John and Maria (who always keep an eye on our house when we are away) rolled up carpet rugs and lifted furniture onto crates – this at a time when their own house was in even greater danger of flooding! And on Boxing day evening our daughter set off from London with one of our grandsons, and our son set off from Bromsgrove, also with a grandson. In neither case were their journeys without incident. Our son had to abandon his car a few miles short of Hovingham due to the road being flooded and reached Hovingham only by virtue of a farmer’s good service in bringing him on by Land Rover. Our daughter found the A64 blocked by flooding and an accident. But when they arrived, they were able to join all the other villagers, many of them from the new houses along Pasture Lane, in putting down sand bags and giving general support.

We returned home a few days later to find our house free from flooding and very welcoming. It is at times like this when one discovers the value good friends and supportive family.

**Eddie Lucas**



## Rainfall at Hall Farm, Hovingham (in mm)

	Jan	Feb	Mar	Apr	May	Jun	Jul	Aug	Sep	Oct	Nov	Dec	Total
<b>2010</b>	83	58	47	21	11	37	42	42	82	64	74	31	<b>592</b>
<b>2011</b>	43	68	6	2	41	52	48	112	25	67	28	66	<b>558</b>
<b>2012</b>	49	16	20	148	48	102	110	76	113	97	137	122	<b>1038</b>
<b>2013</b>	57	24	52	14	83	48	26	55	57	90	55	57	<b>620</b>
<b>2014</b>	127	58	38	23	35	54	52	94	29	72	108	48	<b>838</b>
<b>2015</b>	26	20	36	21	89	15	79	67	72	71	110	151	<b>757</b>
<b>Avg</b>	<b>63</b>	<b>46</b>	<b>38</b>	<b>50</b>	<b>55</b>	<b>66</b>	<b>55</b>	<b>68</b>	<b>53</b>	<b>77</b>	<b>70</b>	<b>73</b>	<b>677</b>

\* Wet, wet, wet - but strangely warm still. No records broken for rain, but some flooding and the water table is high!

Avg - figures calculated from 1997 to 2014

Figures reproduced with the permission of Robert Wainwright

### Need help with your Computer?

Internet, hardware, software, upgrades, repairs, tuition, or simply an introduction to your PC... sorted in your own home.

Martin Underwood 01653 619293  
07748 632563

**Underwood Computer Services**

The  
**WORSLEY ARMS**  
Hotel

An exquisite, timeless country house setting with open log fires and stylish furnishings.  
All bedrooms have private bath, telephone, TV and room service.  
Four-poster suite for special occasions.  
Main Street Hovingham, York. Tel 01653 628234  
[www.worsleyarms.co.uk](http://www.worsleyarms.co.uk)



Many of you attended the Hovingham School Pop-up Chocolate Shop before Christmas and supported the children in fund-raising for the school. Huge congratulations to the children who worked so hard to put the event together and present their chocolates so creatively. They were sold out by just after 4pm- an amazing result! They are really proud of their achievements and are now thinking hard about how to spend the money they earned wisely. Thanks for all the support you showed the school and children for this event.

Already this term we have visitors and trips planned to support the children's learning experiences. The Class 2 children are going to York Museum as part of their Anglo-Saxon and Viking topic, Mr Rumney from Malton School has been in to deliver a fantastic Science Workshop to Class 2 about forces and friction and Class 1 have enjoyed some joint learning with St Hilda's. Forest Schools is proving to be a huge hit with those who have had sessions so far this half term. All the children across the Federation will have the opportunity to enjoy these sessions over the spring and summer terms. After school clubs include Film Club and Dance Club- both proving really popular. Please look at our school website to see all the wonderful things we have been doing so far this year.

We are always looking for volunteers to come and listen to the children read or share skills to support their learning topics. If you have an hour or two a week to help please contact the school with your details and Mrs Harland will get back to you; full training will be given! Also, if you have a particular art skill or interest that you think the children would love to learn about or see, again, please contact us- we would love to hear from you

**Sallie Harland.**

## Village Hall News

We have just held our Annual General Meeting and so have been looking back and looking forward.

Last year the whole hall, inside and out, was repainted - well almost - we decided the kitchen and toilets did not need doing at that time. The market shed also had several coats of varnish.

We did some work testing out the audio loop systems. An expert surveyed them and they were working just fine. They had been installed but never used at an event or meeting before. The timing was perfect as the school were able to have the Hall loop running during their Pantomime. We will be buying a microphone to use in the meeting room.

Future plans are to upgrade the ladies toilets to the standard of the men's. We are also planning to replace the carpet in the Community Room - it has marks and is difficult to clean.

The Village Hall Committee meets once a quarter, but we are in contact in between if anything urgent comes up or a decision is needed. Every month, on a rota, we inspect the building inside and out and test the alarms and security lighting. Sometimes people using the building notify us of a problem. This happened in December - after all the wet and windy weather - there was a leak - water was coming down the inside wall near the main door. One of our members braved the weather and had a look at the roof. He replaced a fallen tile. We will be getting a professional roofer to check out that area thoroughly. That wall inside may need a repaint - we will wait and see!

The Hall and Community Room have been in steady use. We want to make it as safe, comfortable, well maintained and well run as we can. But we are all volunteers. We would also like it to have all the equipment and facilities people would like and make it as welcoming as we can. We will be encouraging feedback and comments.

If anyone would like to join us, we need your input and new perspectives (and you don't have to be on the inspection rota).

**Wendy Dawson**

To get in touch, contact Wendy Dawson, Secretary on 01653 628296 or email [wendydawson@hovingham.org.uk](mailto:wendydawson@hovingham.org.uk).  
For bookings contact Janice Wood, Bookings Secretary on 01653 628952 or email [janicewood@hovingham.org.uk](mailto:janicewood@hovingham.org.uk).



### Thundercliffe's

THUNDERCLIFFES THUNDEROUS FISH BOXES  
to collect from Hovingham Market a months supply of  
fish of your choice

or we can make you a catch of the day fish box  
all individually packed and labelled for you to freeze  
no minimum or maximum amount

Tel or Text 07948 502476 tel 01439 771050

FACEBOOK TWITTER [www.thundercliffes.co.uk](http://www.thundercliffes.co.uk)

Delivery possible but it would be nice to see you there



Station Road, Helmsley, YO62 5BZ (01439) 771166

Dedicated small animal practice in modern purpose-built premises.  
Our friendly team of four vets, four fully qualified nurses and support staff are all committed to providing the best possible care for your pets. We are your pets' GP, surgeon, dentist and midwife.



With branches at Kirkbymoorside & Pickering

[www.edgemoor-vets.co.uk](http://www.edgemoor-vets.co.uk)



It's what we are retiring TO that matters not what we are retiring FROM. We can look at retirement through the rear view mirror, at what we left behind - or through the windscreen at the road ahead -no matter what the uncertainties.

Many retirees worry about leaving friends, filling their time and feeling valued. Volunteering is an option but might we lose our new-found freedom or take on extra personal costs on a falling income? Will our role be important, valued, effective and enjoyable? How do we investigate without committing ourselves?

### Volunteering in our local community

Many residents cannot use public transport. Some services are being cut; some do not start or finish where and when needed; or are unsuitable for those with mobility problems.

This creates isolation and loneliness. Some leave a long cherished home for somewhere with more local facilities.

Ryedale Community Transport help them remain in their own communities, with trips to social functions, shops and medical appointments in vehicles for both able-bodied and disabled passengers - helped by 50 volunteers using their own cars. As one grateful passenger said: *"your volunteers have given me back my independence."*



### He played cricket for England's Women's team

Volunteers meet interesting people and make new friends - with a few surprises like the man who played in England's National Women's Cricket team! The length of time volunteers stay with RCT proves just how enjoyable and satisfying drivers find their role in such a beautiful area, giving as much or as little time as they wish - when it suits them. Full mileage expenses help them run and keep their cars. No special skills are required - just common sense and a wish to help our community (mini-bus drivers need to be MIDAS qualified). There is absolutely no pressure to join: potential volunteers can go out with an experienced driver before making any decision.

### More volunteer drivers are needed

RCT need more volunteers to meet rising local demand - including FREE, NHS funded trips, arranged by Hovingham surgery. **If you would like to know more, call Linda on 01653 699059 or visit [www.ryedalect.org.uk](http://www.ryedalect.org.uk)** **Rob Thompson**



**Alan Cawthorne. BSc (Hons) HCPC Registered.**  
<http://alancawthorne.wix.com/thefootman>

#### Services offered:

- Nail care and Callus (hard skin) reduction
- Biomechanical assessments
- Custom, hand-made orthotics / insoles
- Diabetic and vascular foot checks
- Verrucae treatment and corn removal
- Fungal nail and Athlete's foot treatments



If you would like to book an appointment or discuss whether treatment would be suitable for you, please contact me.

#### Home Visits Available

Covering Helmsley and all surrounding areas.

Every Friday at Bondgate Clinic  
 16 Bondgate, Helmsley, York, YO62 5BR

**Tel: 01439 771196**



## The Hovingham Village Market

**Duke of York Community Award -2014**



**Next Markets 6th Feb & 5th March**

**35+ STALLS & Community Café**

**Hovingham Village Hall from 10:30am**

**SHOP LOCAL & SUPPORT LOCAL**

[www.hovingham-market.org.uk](http://www.hovingham-market.org.uk) [themarket@hovingham.org.uk](mailto:themarket@hovingham.org.uk)

**Hovingham Village Website** - contact [Caroline Davis](#), [Janice Wood](#), [Phil Chapman](#) or [David Richardson](#).

The current website is in the process of major revision and updating, funding for the next 3 years has been secured. Details and documents have been provided to a web designer who will take provide a mock up of the revised website for us to assess. The intention has always been to provide a comprehensive source of information for local people and visitors to the area.

**Environment and Wildlife** - contact [Ann Chapman](#) or [David Richardson](#)

- Winter is with us and although preparations have been made to tackle serious snowfalls it has been unseasonably warm in the extreme. However the chances are we may still get some snow before spring arrives. If this happens anyone willing to give an hour to shift snow from designated footpaths in the village will be made very welcome.
- Grit bins containing salt grit are located in the village and will be kept full by the Action Group, with NYCC only filling a couple of bins in the village.

**Market** - contact [Peter Stark](#) or [Caroline Davis](#)

- The November market had torrential rain all day. At the 5<sup>th</sup> December market 'Storm Desmond' visited, with high gusts of wind. It was touch and go whether the market could be held, but due to perseverance and ingenuity the market survived. The 2<sup>nd</sup> December market on the 19<sup>th</sup> December had much better weather. At all three markets visitor numbers held up very well.
- A lot goes on behind the scenes to make the sure the market continues to flourish and new volunteers to help with the running of the market are always very welcome.
- Any Community Group wanting to run a Community Stall should contact the Market Group.

**Playground** - contact [Ann Chapman](#), [Carol Battersby](#), [Rosemary Stewart](#) or [David Richardson](#)

- Along with quite a few other maintenance tasks the zip wire has been overhauled and updated. This was carried out by a local playground firm.
- We had wind damage to the covered shelter and thankfully this was swiftly repaired by a generous Bill Clapperton.
- It is important everyone should be aware the Playground is self funded, many issues such as damage, regular maintenance of equipment, grass & hedge cutting all have a cost and are ongoing requirements. **Donations, however small would be greatly appreciated, as are offers of help.**

**Christmas Tree**- contact [Murray Stewart](#), [Mark Wilson](#) or [David Richardson](#)

- When the village is provided with a well lit Christmas tree situated outside the village hall it certainly brightens things up on those dark nights and early mornings.

**Neighbourhood Watch** - contact [Phil Chapman](#)

- Regular emails and information on criminal activity from the police continue to be sent out. Villagers should be vigilant and report any suspicious activity to the police.

Please contact any of the groups directly or via emails to [action@hovingham.org.uk](mailto:action@hovingham.org.uk)

*David Richardson*

## Hovingham Estate [www.hovingham.co.uk](http://www.hovingham.co.uk)

**Residential property** - The Estate has residential property to rent, ranging from 2 bedrooms to 5 bedrooms, all situated within the village. **Contact:** The Estate Office on 01653 628771

**Logs for sale** - The Estate sell logs in varying load sizes which can be delivered within 1 mile of Hovingham Village. **Contact:** David Teasdale on 01653 628037

Please note due to harvest logs cannot be delivered during the months of August and September.

**Holiday Cottage** – Spa Cottage; is an attractive 3 bedroom, 2 bathroom cottage that sleeps 6 in comfort. For bookings please contact Rural Retreats at [www.ruralretreats.co.uk](http://www.ruralretreats.co.uk) or telephone 01386 701177



## Hovingham Fireplaces

Worsley Arms Business Park,  
Hovingham, York, YO62 4LA

Phone: 01653 628222

Fireplaces  
Multi Fuel Stoves  
Marble & Granite  
surrounds  
Gas Fires,  
Stone Fireplaces  
Granite Worktops

[www.hovinghamfireplaces.co.uk](http://www.hovinghamfireplaces.co.uk)



Beef, Lamb & Pork – Free Range Eggs – Fresh Seasonal Vegetables  
Choice of Sausages, Burgers and Sweet Cured Hams  
Fresh Turkey and Chickens Available for Christmas  
Orders taken NOW

**We are only 2 miles West of Hovingham**

Everything we sell is grown or  
born & reared on our farm



**THE WALL, COULTON**  
CORNER HOUSE FARM, COULTON, HOVINGHAM, YORK  
OPEN 24 HOURS, 7 DAYS A WEEK  
PHONE: 01347 888293 [www.thewall-coulton.co.uk](http://www.thewall-coulton.co.uk)



**GENERAL - Hovingham & Scackleton**

- **Ryedale Local Area Plan**
  - Information was included in last Newsletter
  - Observations from the Parish Council were sent
- **Minerals and Joint Waste Plan**
  - A response from the Parish Council was sent

**SCACKLETON**

- **Road Repairs** - Residents are advised to report potholes via the NYCC online site.
- **Signs** - The Parish Clerk is investigating the cost of "Slow Down - Children Playing" signs.

**Ryedale District Council (RDC)****from Councillor Robert Wainwright**

- Once all responses to the *Ryedale Local Plan* have been received they will hold an extraordinary meeting to prioritise the applications. All information will then be in the public domain.
- The RDC budget requires further savings to be made. Strategies include working with other Councils and reducing the number of staff. An increase of 1.99% has been recommended to RDC Councillors.

**FINANCE**

- Parish Council finance continues to be healthy.
- A budget will be proposed at the March meeting.
- The Treasurer invited any questions.

**Any Other Business**

- **A proposal to form a Federation of Local Schools** has been received for those Primary Schools that "feed" Ryedale School. Councillor Mark Wilson explained the opposition of the Hovingham & Ampleforth Governing Body to the proposal. The Parish Council shared their opposition.

**FUTURE PARISH COUNCIL MEETINGS 2016** start at 7pm

- Remaining meetings for the Parish Council are held on the second Wednesday of alternate months.
- Meetings will be held on: 9<sup>th</sup> March, 11<sup>th</sup> May, 13<sup>th</sup> July (Scackleton), 14<sup>th</sup> September and 9<sup>th</sup> November.

**HOVINGHAM**

- **Action Group** - A report was submitted and is included elsewhere in this Newsletter. A litter pick, new website, concern regarding recent thefts and a potential "No Cold Callers" ban were discussed.
- **Bus Service** - Removal of the Helmsley service and reduction to a two-hourly Malton service have been notified by NYCC and are included in this Newsletter. The Parish Council have proposed improvements to proposals to increase bus usage. The Parish Clerk is to contact our NYCC Councillor regarding option for holders of concessionary passes to contribute to improving services.
- **Cemetery Maintenance** - Continues to be monitored.
- **Christmas Tree** - The Parish Council thank Murray Stewart and Mark Wilson again for their work acquiring and erecting the tree, supplied by the Market Group.
- **Fence Stone House/Village Hall** - This has been replaced by the Hovingham Estate.
- **Flooding** - Reports from Councillor Mark Wilson, the flood warden, and Sir William Worsley were discussed. A meeting with the Environment Agency will be arranged to discuss problems with bridge to Pasture House, the need for non-return valves on drains and other improvements. This is covered elsewhere in this Newsletter.
- **Hand-Rail - York Hill** - This has been installed by the Hovingham Estate and thank you to the resident who provide Christmas Illuminations on the rail.
- **Pasture Lane** - The Parish Council are writing to all residents of New Pasture Lane to advise them on current status regarding provision of the wearing surface of the road and pavements. Residents are being encouraged to form their own "Action" Group.
- **Recycling Area** - Complaints have been received regarding unacceptable state of area. The area will be closed unless it is kept tidy. Article elsewhere in Newsletter.
- **Top Green Posts** - New posts have been installed and await painting in Spring/Summer. Skirts to protect the posts from strimmer will be installed and other maintenance proposals will be investigated.



Planning a new  
indoor activity?  
Our discounts  
can help!

Pilot session for regular use - up to 100% off !!!  
Residents or regular use - up to 25% off

Will it work? Will it be affordable? Will the first session succeed? The only way to know for sure is **to try it and see**. Your Village Hall would like to help you. Give us a call - we can offer practical advice and even advise on publicity.

**Your Village Hall supports new activities**

Call Janice on 01653 628952 or visit [www.hovingham.org.uk](http://www.hovingham.org.uk)



## February 2016

1 <sup>st</sup> Mon	Recycling Collection – <b>Recycling Bins - NO Garden Waste Collection</b>
2 <sup>nd</sup> Tue	<b>Hovingham Women's Fellowship - 7pm</b> Hovingham Village Hall Guest Speaker: Mrs Angie Harrison talking on 'Music Transforming Lives' <b>Roman Catholic Mass at Hovingham All Saints Church - 7pm</b> Supporting the strong and growing spirit of local multi-faith sharing, the organisers, the Ampleforth & District Catenian Association, offer a warm welcome to those of <b>ALL</b> faiths Please contact Rob Thompson, ardnamurchan75@btinternet.com or (01653) 628640
6 <sup>th</sup> Sat	<b>Hovingham Village Market - 10:30am to 1:30pm - Hovingham Village Hall</b> Please come along and support the Market; Hovingham Playground Group will be running the Community Café.
7 <sup>th</sup> Sun	<b>BCP Eucharist Service - 10:30am</b> Hovingham Church <b>Methodist Service - 10:30am</b> Hovingham Chapel - Mrs. J. Clark <b>Evening Service - 6:30pm</b> St George's Church <b>Scackleton</b>
8 <sup>th</sup> Mon	Landfill Waste Collection – <b>Green Bin</b> <b>Supermobile Library in Hovingham - 5pm until 7pm</b> – Location Hall Green
9 <sup>th</sup> Tue	<b>Return of the Scrumptious Fish &amp; Chip Van 5:35pm</b> Hall Green, opposite Village Hall The van returns after their winter holiday (cartoon thanks to Rob Thompson)
14 <sup>th</sup> Sun	<b>Eucharist Service - 10:30am</b> Hovingham Church <b>Methodist Service - 10:30am</b> Hovingham Chapel - Revd. J. Hale
15 <sup>th</sup> Mon	Recycling Collection – <b>Recycling Bins - NO Garden Waste Collection</b>
Mon 15 <sup>th</sup> to Fri 19 <sup>th</sup>	<b>Tennis Coaching for Juniors - Hovingham Tennis Club at Village Hall</b> Tennis coaching for juniors at Hovingham during the half term. 5 to 10 year olds - Monday to Thursday <b>2pm to 3pm</b> Friday <b>10am to 11am</b> 11 to 16 year olds - Monday to Thursday <b>3 to 4 pm</b> Friday <b>11am to 12noon</b> Please contact: Murray Stewart, murray@murraystewart.co.uk (01653) 628741
16 <sup>th</sup> Tue	<b>Scrumptious Fish &amp; Chip Van - 5:35pm</b> Hall Green, opposite Village Hall
21 <sup>st</sup> Sun	<b>Morning Praise Service - 10:30am</b> Hovingham Church <b>Methodist Service - 10:30am</b> Hovingham Chapel - Mr. A. White
22 <sup>nd</sup> Mon	Landfill Waste Collection – <b>Green Bin</b> <b>Supermobile Library in Hovingham - 5pm until 7pm</b> – Location Hall Green
23 <sup>rd</sup> Tue	<b>Scrumptious Fish &amp; Chip Van - 5:35pm</b> Hall Green, opposite Village Hall
28 <sup>th</sup> Sun	<b>Benefice Eucharist Service - 10:30am</b> Hovingham Church <b>Methodist Service - 10:30am</b> Hovingham Chapel - Mrs. J. Lakin
29 <sup>th</sup> Mon	Recycling Collection – <b>Recycling Bins - NO Garden Waste Collection</b>



## March 2016

1 <sup>st</sup> Tues	<b>Hovingham Women's Fellowship - 7pm</b> - Home of Mrs Pat Hewitt Guest Speaker: John Harrison of Settrington, with slides of Sri Lanka trip
4 <sup>th</sup> Fri	<b>Annual Interdenominational Women's Day Prayer Service-2pm</b> Castle Howard Chapel Everyone welcome; women, men and children. For transport contact Sue Goodwill 628077
5 <sup>th</sup> Sat	<b>Hovingham Village Market - 10:30am to 1:30pm - Hovingham Village Hall</b> Please come along and support the Market; Hovingham Chapel will be running the Community Café. <b>Fracking Fund Raising Event - 7pm - Hovingham Village Hall</b> David Rovics - World Tour 2016, also Uncle Paf (Ancient Punk) and Kate Fox (Poet) Tickets £10 - Please call Mick Johnston (01723) 850041 for details
6 <sup>th</sup> Sun	<b>Mothering Sunday Service with Chapel - 10:30am</b> Hovingham Church
7 <sup>th</sup> Mon	Landfill Waste Collection – <b>Green Bin</b> <b>Supermobile Library in Hovingham - 5pm until 7pm</b> – Location Hall Green
8 <sup>th</sup> Tue	<b>Scrumptious Fish &amp; Chip Van - 5:35pm</b> Hall Green, opposite Village Hall
13 <sup>th</sup> Sun	<b>Eucharist Service - 10:30am</b> Hovingham Church <b>Methodist Service - 10:30am</b> Hovingham Chapel
14 <sup>th</sup> Mon	Recycling Collection – <b>Recycling Bins WITH Garden Waste Collection</b>
15 <sup>th</sup> Tue	<b>Scrumptious Fish &amp; Chip Van - 5:35pm</b> Hall Green, opposite Village Hall
20 <sup>th</sup> Sun	<b>Joint Easter Readings at Chapel - 2pm</b> Hovingham Chapel
21 <sup>st</sup> Mon	Landfill Waste Collection – <b>Green Bin</b> <b>Supermobile Library in Hovingham - 5pm until 7pm</b> – Location Hall Green
22 <sup>nd</sup> Tue	<b>Scrumptious Fish &amp; Chip Van - 5:35pm</b> Hall Green, opposite Village Hall
28 <sup>th</sup> Sun	<b>Easter Benefice Eucharist Service with Chapel- 10:30am</b> Hovingham Church