

The Hovingham and Scackleton Newsletter

August 2015

Welcome to the Hovingham and Scackleton Newsletter

Welcome to this the summer edition of the Hovingham and Scackleton Newsletter. Two events of note have taken place in Hovingham since the last Newsletter, both of which are reported on elsewhere in this issue. The first took place on the Weekend of 13th and 14th June to commemorate the 200th anniversary of Hovingham Methodist Chapel. Villagers were invited to a thoroughly detailed exhibition of the chapel's history including a lecture by Sue Goodwill and photographs of some of the worshipers at the chapel, some of them dating back well into the last century. The weekend included a rousing Concert given by the York City Gospel Choir and climaxed by a well attended service on the Sunday morning led by the inspirational preacher, the Revd David Emison. Much of the credit for the success of this inspiring weekend must go to the hard work put in by Sue Goodwill

Then just three weekends later at the beginning of July the village witnessed another celebration, this time based at All Saints' Church. This was the Floral and Music Festival, celebrating Village life. Unfortunately, Maureen and I were not able to be present for this as we had a pre-arranged engagement in London, but we were involved in the planning arrangements and can testify to the enormous amount of work put in by Jackie and Graham Mason among others. Talking afterwards to those who were there we realised that this was the biggest and most successful event held in the village since the 18th Century Fairs organised by the late Lady Bridget Worsley towards the end of the 20th Century. The wide-ranging floral displays illustrated every aspect of the Village life and the standard and variety of music catered for all tastes. What's more there was even a Duck Race for the children to enjoy. Something over £5000 was raised towards much needed repairs to the Church roof. A generous sponsorship by Ian Mosey (Feeds) Ltd was much appreciated. **Eddie Lucas**

Dial the Police on 101 - don't hesitate

Ryedale remains one of the safest areas to live with four reported incidents in the Hovingham Ward in June 2015. Our Police Community Support Officer, Nicky Pounder, regularly visits the monthly Hovingham Village Market and encourages residents to have a chat and seek advice about any concerns.

After the recent theft of a stone Saxon Corpus from All Saint's Church, and the unreported sightings of individuals in the area, Nicky makes a plea to all residents to report any issue or behaviour they have concerns about by dialling 101 immediately. All calls will be dealt with in confidence and the police are keen to support our community. Alternatively you can contact our dedicated police officers by email.

PC 1922 Nick Coning contact email: nick.coning@northyorkshire.pnn.police.uk

PCSO 4873 Nicki Pounder contact email: nicki.pounder@northyorkshire.pnn.police.uk

You should call 101 to report crime and other concerns that do not require an emergency response. For example, if:

- Your car has been stolen
- Your property has been damaged
- Report a minor traffic collision
- Speak to the police about a general enquiry
- You suspect drug use or dealing in your neighbourhood
- Give the police information about crime, or possible crime in your area

You should always call 999 when it is an emergency, such as when a crime is in progress, someone suspected of a crime is nearby, when there is danger to life or when violence is being used or threatened.



Contact: newsletter@hovingham.org.uk or (01653)-628364

Published and © 2015 by The Hovingham & Scackleton Newsletter Group. Views are not necessarily those of Group or Parish Council



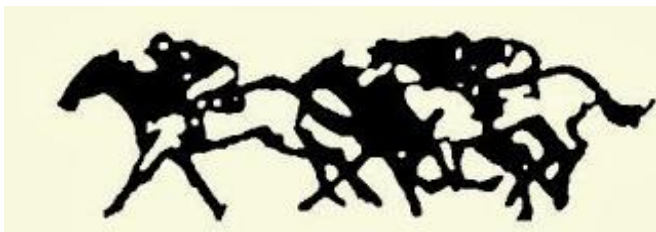
Entrance for cars is £6 and vans £8 payable on the day.

All proceeds to the Church roof appeal.
There will be a café in the village hall run by the Church.

Hovingham Bowls Club - Race Night 5th September

As many will be aware we have a happy and thriving Bowls Club in Hovingham that plays regularly throughout the spring and summer on Monday, Tuesday, Thursday, and Friday evenings as well as holding in-house competitions. Although we do not win many trophies we do enjoy playing and welcome new members whether they can bowl or would like to learn to bowl. However, maintaining a bowling facility is expensive and in order to raise funds to help secure our future we are organising a Race Night on Saturday 5 September 2015 at 7.00pm in the Village Hall. Tickets will cost £7.50 and will include a buffet supper. For those who have never been to a Race Night event do not be put off by the title. Although there will as the name suggests be filmed races on which you can place a bet or not as you wish it is just as much a social gathering for people to meet together in a congenial atmosphere and enjoy a bit of fun, but perhaps more importantly you will be helping to preserve an important part of Hovingham Village.

Tickets will be available on a stall at Hovingham Village Market on 1 August 2015 (the Bowls Club are running the Café) or can be obtained from Malcolm Hutton 01653 628222 (work) or 628493 (home), Jeremy White 01653 618888 or myself Ian Battersby 01653 628388. If all else fails just have a word with any member of the Bowls Club and they will point you in the right direction. Tickets will also be available at the door on the night – **Put it in your diary 5 September 2015 7pm at the Village Hall.** I will look forward to seeing you there where you will be assured of warm welcome. *Ian Battersby*



NHS Urgent care Centres - from 1st April 2015

The new service operates **24 hours a day, 365 days a year**. It is provided from two urgent care centres, one located at Scarborough Hospital and one at Malton Hospital, (Middlecave Road, YO17 7NG)

To access this service - **call 111**

- They will give you an appointment (if appropriate) to attend an Urgent Care Centre to reduce the time you have to wait at the centre. Alternatively, you can simply go to one of the centres during opening hours (9am to 8pm) and wait to be seen.
- Home visits are also provided where appropriate.

For Emergency care **call 999**



The Market continues to go from strength to strength with fantastic support from our stallholders, our community and volunteers. Our August Market has a focus on fish theme with generous donations of a fish box and wine from Peter Thundercliffe and Ryedale Vineyards. We're also running a Find the Fish competition for families with a prize we know all children will enjoy – an ice cream from Fabulously Finished.

Our June and July markets were both successful even with the challenges of gusting winds in June and a flooded car park in July after the overnight thunderstorms. Our volunteers did a tremendous job in clearing the car park of water before the Market opened. Special thanks to Mark Wilson for helping out with a pump.

The July Market coincided with the Hovingham Flowers & Music Festival. Our stallholders loaned produce for the Market flower arrangement displayed in the church. Harlequin Flowers donated a beautiful arrangement with the proceeds raised donated to the Church Roof Fund. In June, Fabulously Finished launched their own ice creams served from a traditional butcher's bike bringing surprise and delight to our visitors.

Visitors have also enjoyed the variety and interest introduced by our guest stallholders – these include Fiona Macdonald (lampshades, courses, country products), Miss Friday (meringues & brownies); Helmsley Brewing; Nannini (leather goods), Olive Branch (Easingwold) and local Stonegrave stonemason, Samuel from SC Stone Sculptures.

Volunteering is a great way to support the Market and is invaluable to the local community. New volunteers are always made very welcome and we look after you with refreshments too. Ask a volunteer at the Market for more details.



Caroline Davis, Hovingham Market Committee

May Bank Holiday - Car Boot Sale a great success

Hovingham was transformed into a bustling open air shopping centre as Hovingham Social Committee held the first Car Boot sale of the year. Locals, and people travelling from as far away as Scarborough and Wakefield, made up a total of 59 boots covering the village greens. Browsers could purchase anything from a paperback book to a bicycle. Ken Harrison looked very proud of his purchase of the latter as he wheeled it away! The smell of home made fresh burgers from Starks stall wafted through the air and offered substantial sustenance for the many people who wandered around purchasing and socialising. In addition to this the Village Hall Café competed very successfully with Betty's famous Yorkshire Tea Room! The delights on offer sold like...well...hot cakes. The café was run by a young local medical student, Rebecca Clifford. Rebecca started her education at the village school and is soon heading off to Malawi to do exceptional work over there.



Hovingham Social Committee held a tombola stall. And what a tombola stall! It was loaded with prizes kindly donated by villagers – there was something for everyone. For 20p a ticket you could win a small carton of juice or a star prize. When one lady won a star prize her whoops of delight literally echoed through the air, and the surrounding 'booters' were stunned into silence for a few seconds. It's amazing how delighted people are when they win...being lucky is a wonderful feeling. David Blades and Gary Benson had rather an entertaining time too. David won some prizes, one being a pack of cuppa soup, much to the amusement of Gary! Oh the beauty of a tombola! The reaction is similar whether it is the star prize or not!

Grateful thanks to all who helped make the event a great success. We raised sufficient funds to host a Christmas Luncheon for eligible residents. This will be held on the first Monday in December and be prepared to the usual high standard by Jamie and his staff from The Malt Shovel. *Karen Rutter*, Secretary, Hovingham Social Committee



Hovingham and St Hilda's primary schools put on a fantastic two-show performance of the musical *Ali Baba and the Bongo Bandits* last week, to a packed village hall on both occasions.

The show, which had been rehearsed in secret, was designed as a thankyou and fond farewell to headteacher Mrs Maureen Skinner, who retired at the end of the term.

The show was a hit, the kids were brilliant and, best of all, the crowds loved it.

Who knows....next year Broadway?

Sally Coulthard

Ryedale Family History - the first decade

It's hard to believe that it is ten years since some of us met at Kirkbymoorside to agree the setting up of the Ryedale Family History Group and to thrash out our Constitution. We felt then that there was a need to fill a gap in the geography which did not have Family History covered by other societies.



*Cutting the cake-- a slice of history .
Janice Wood with RFHG members. The Research
Room has attracted many visitors to Hovingham*

In those years we have had well over six hundred members world-wide, which demonstrates the truth of what I have said above, and yet, when we go to fairs, the inevitable question is, "Where is Ryedale?" Our stock answer is that it is the largest district in the largest county in England. Can you beat that?

Over the years, the emphasis of our work has shifted. To begin with, we concentrated on recording monumental inscriptions in churchyards and cemeteries. publishing them on CDs. Most of our area has been covered now, although there are still one or two parishes still to be done.

Then came our Heritage Lottery grant and the purchase of parish records on microfilm from North Yorkshire County Record Office, in order to transcribe them for publication and eventually to make them available on line. Although we have a team of volunteers, this has been a slow process due to the complexities of reading old manuscript and then having them checked for maximum accuracy.

Another team of volunteers has come forward to research the names of men and women on our war memorials and several of the books resulting have gone to a second or third printing, demonstrating the level of interest in our soldier ancestors.

I find myself using the word "volunteers" frequently and I cannot emphasise too much the amount of volunteering which has been offered, especially by your committee members. Weekly attendance at the Research Room, attendance at fairs, publishing Ryedale Roots, administering the membership, dealing with finance, keeping the web site up to date, showing expertise in the technology are just some of the tasks which have been taken on by the volunteers on a regular basis.

I must therefore, on behalf of you, the members, offer our sincere thanks for the time and often considerable expense given freely by the volunteers to "keep the show on the road." **Peter Braithwaite**, Chairman Ryedale Family History www.ryedalefamilyhistory.org

Ten years! Well I don't feel any older, but then those years have sped by so fast and it has been such fun! I was asked what are the highlights of this decade. It is hard to answer that one, but the best part for me must be the huge number of people I have met at our meetings and at the Research Room and working with a really enthusiastic team of volunteers. On a personal note, the group has helped me to find out so much history of our area and of my own family. Thank you and I hope all our members continue to enjoy and make discoveries with us! Look out for a review of our celebrations in the next newsletter.

Janice Wood, Vice Chair

Every summer, at around this time, I fret that my garden shears and secateurs are not really cutting things properly, that my scissors are blunt and my knives are beyond their best. What a joy when Jim’s green card comes through the door telling me that the grinder is on its way. So we wait patiently. Then, sure enough, there’s a knock on the door, and we do a good deal with Jim who bobs down the road to grind them all on his splendid cart grinder. Worth every penny – and cutting both indoors and out is good again for another year. And remember to give him his green card back. There’s eco for you.

Margaret Bell

Pasture Lane - Open Spaces Fund - Status Update

The Parish Council have received the following update from Ryedale District Council who are administering the £43,500 paid by the developer of New Pasture Lane as a “Section 106” condition on their planning permission.

	Granted	Spent	Remaining	Total
Bowls Club	£7,769.52	£6,681.36	£1,088.16	£7,769.52
Cricket Club	£12,287.00	£10,100.66	£2,186.34	£12,287.00
Playground	£13,150.00	£11,325.50	£1,824.50	£13,150.00
Tennis Club	£3,925.35	£1,947.76	£1,977.59	£3,925.35
Village Hall	£4,711.00	£4,729.00	£0.00	£4,729.00
	£41,842.87	£34,784.28	£7,076.59	£41,860.87

Groups must spend their grants by February 2019 to avoid surplus monies being returned to the developer, with interest. The Parish Council will continue to monitor this and ensure all the monies go to good causes within the village.

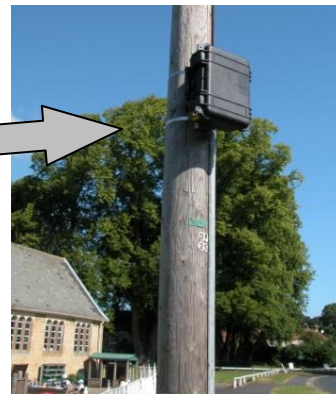
Seen up a pole in Hovingham

Following further complaints from residents about excess speeding in Hovingham, the Ryedale Community Partnership (A police, Ryedale Council and Fire brigade joint initiative) have recently monitored the speed of vehicles using a speed camera mounted on the telegraph pole outside the school.

Excess speeding was one of the greatest safety concerns of residents in the Community Plan and continues to be of great concern.

The results could trigger additional speed enforcement and possible membership of the Community Speedwatch initiative.

Phil Chapman



Planning a new indoor activity?
Our discounts can help!

Pilot session for regular use - up to 100% off !!!
Residents or regular use - up to 25% off

Will it work? Will it be affordable? Will the first session succeed? The only way to know for sure is **to try it and see**. Your Village Hall would like to help you. Give us a call - we can offer practical advice and even advise on publicity.

Your Village Hall supports new activities
Call Janice on 01653 628952 or visit www.hovingham.org.uk

The PCC of All Saints Church would like to say an enormous thank you to all who supported the Festival.



Special thanks go to the flower arrangers and the musicians who gave their time and talents so generously and freely. Also to the small band of people that worked tirelessly organizing the Festival and those who gave their time to help during the weekend. It was wonderful to see the well established and the newer inhabitants of the village all working together organizing and running the Festival.

The Friday evening preview was a great success with over a hundred and eighty people in the Church to view the floral arrangements and listen to some wonderful music. The Church looked beautiful and was an amazing floral interpretation of village life. Many who came commented on the very high standard of floral arrangements and that they were superior to many of the other flower Festivals in the area.

All Saints Church is an important part of our village. It is a beautiful building where people can either go and pray or just sit in quiet contemplation in peaceful surroundings. The fund raising was for the essential repairs to the Church roof. Together we raised £4,000, which includes the generous sponsorship from Ian Mosey. The Cricket Club kindly donated £1,000, so in all we raised over £5,000 and with the collection from songs of praise it came to £5,220.

This goes towards the overall cost of repairing the roof that is estimated to be about £25,000 plus VAT. This is the second phase; the first phase was carried out earlier at considerable expense. Although the roof looks in reasonable condition a closer inspection reveals that a lot of work needs to be done to make sure that the Church is water tight and safe for future generations. We have not been eligible for any grants and therefore have to raise the money ourselves.

The Duck Race on Saturday was a fun event with 520 ducks competing along the beck in four heats and a final. Congratulations to our prize winners: Cate Birch (1st), Sally Finn (2nd), John Dick (3rd).

The culmination of the weekend was the Songs of Praise that brought together all faiths and was very well attended to sing our favourite hymns.

There were many other events happening the same weekend and so it was lovely to see Hovingham residents who were able to make the Festival, enjoy it too. We were sad for those who were unable to come to the Festival because they missed a wonderful experience.

Finally we would like to thank Sir William and Lady Worsley for opening their gardens that gave the Festival an added dimension.



Graham and Jackie Mason

The
WORSLEY ARMS
Hotel

An exquisite, timeless country house setting
with open log fires and stylish furnishings.

All bedrooms have private bath, telephone, TV and room service.

Four-poster suite for special occasions.

Main Street Hovingham, York. Tel 01653 628234

www.worsleyarms.co.uk

Need help with your Computer?

Internet, hardware, software, upgrades, repairs, tuition,
or simply an introduction to your PC... sorted in your own
home.

Martin Underwood 01653 619293
07748 632563

Underwood Computer Services

Hovingham Chapel members enjoyed celebrating their Bi-centenary over the weekend of June 13th/14th by displaying much memorabilia in the Chapel – which is still there for anyone who has not seen it. I was immensely pleased to see the Chapel full to hear my talk about The History of Methodism in Hovingham over 200 years and many people, including our visitors from the Wesley Historical Society, bought a copy of my book (some still available, price £7.). This book had taken me many hours of research and could not have been published in its present form without the help of Diana Wetherell Terry's editorship. In the evening it was great to see the support of local villagers to listen to the vibrant York City Gospel Choir and I will never forget the enjoyment I had of singing the words 'Oh Happy Days'. The following morning our visiting preacher was Rev David Emison from Bedale, but most recently retired from Helmsley Chapel. There again that was well attended and we invited people to stay for a cup of tea and piece of our anniversary cake, kindly made by Mrs Christine Horne. It was not planned as a money making event but we did raise £1,200 for Chapel funds. We now have a smart Chapel with kitchenette, disabled toilet, newly decorated and carpeted throughout to accompany the new roof and electric central heating. Please do come and visit us, a warm welcome awaits you.

Sue Goodwill



The FootMan Chiropody ~ Podiatry

Alan Cawthorne. BSc (Hons) HCPC Registered.
<http://alancawthorne.wix.com/thefootman>

Services offered:

- Nail care and Callus (hard skin) reduction
- Biomechanical assessments
- Custom, hand-made orthotics / insoles
- Diabetic and vascular foot checks
- Verrucae treatment and corn removal
- Fungal nail and Athlete's foot treatments



If you would like to book an appointment or discuss whether treatment would be suitable for you, please contact me.

Home Visits Available

Covering Helmsley and all surrounding areas.

Every Friday at Bondgate Clinic
16 Bondgate, Helmsley, York, YO62 5BR

Tel: 01439 771196



The Hovingham Village Market

Yorkshire Farmers Market of the Year-2012
Duke of York Community Award -2014



Next Markets 1st Aug & 5th Sept
35+ STALLS & Community Café

Hovingham Village Hall from 10:30am

SHOP LOCAL & SUPPORT LOCAL

www.hovingham-market.org.uk themarket@hovingham.org.uk

Harvest is approaching fast and may well have started for some by the time you read this. Since my last article all the wheat has had a final fungicide application to keep disease at bay. This is known as an ear wash because it is done when the ears have emerged. In particular it helps to prevent fusarium from entering the grain which can lead to grain being rejected by the mills. We have to show evidence that the grain is safe so we have to do a mycotoxin risk assessment once the wheat is harvested. This involves completing a form with various questions such as:

- 'What was the previous crop?'
- 'Did you plough before drilling or direct drill?'
- 'How much rain was there when the crop was flowering and how much at harvest?'
- 'Did you do an ear wash spray and what strength was the mix?'



Once this is done you will get a score which rates how high the risk is for your grain. This score is then put on a grain passport which has to be sent with every load of grain. Also included on the passport is the variety of wheat, what part of the grain heap it came from, what were the previous three loads that the lorry carried, what is the lorry's registration and most importantly the assured crop sticker. (Now that is another layer of paperwork!)

Once a year you get an inspection to check you are meeting all the requirements regarding storage of grain and chemicals, record keeping and lots of other things that I won't bore you with. I had mine a couple of months ago which took three hours but I passed and now have my stickers to show I am fully certified!! Good job they don't ask how often you go to the pub for therapy-maybe that is only a matter of time!

Generally, the crops look pretty well this year. They have had the rain when they needed it, which does make such a difference. Some of my land above the village is very shallow soil so the crops can suffer if May and June are dry. Hopefully we have had enough warmth to swell the grain, (sounds like a hymn) which will lead to good yields. There is quite a bit of downward pressure on the price at the moment as other countries don't seem to have any crop concerns.

As I don't have any Winter Barley or Oilseed rape, the oats will be first to be cut. I always spray them just before they are ripe with glyphosate (Roundup) which makes sure the stems are dead. Oats have very sappy stems which means that although the grain can be ripe, the straw can be quite green which makes them difficult to combine. Not only does this mean that it slows the combining down but you can block the combine up, and that is the voice of experience talking. The wheat will then follow then onto the beans. I will keep my fingers crossed for a dry harvest and reliable machinery.

Mark Wilson

Rainfall at Hall Farm, Hovingham (in mm)

	Jan	Feb	Mar	Apr	May	Jun	Jul	Aug	Sep	Oct	Nov	Dec	Total
2010	83	58	47	21	11	37	42	42	82	64	74	31	592
2011	43	68	6	2	41	52	48	112	25	67	28	66	558
2012	49	16	20	148	48	102	110	76	113	97	137	122	1038
2013	57	24	52	14	83	48	26	55	57	90	55	57	620
2014	127	58	38	23	35	54	52	94	29	72	108	48	838
2015	26	20	36	21	89	15							
Avg	63	46	38	50	55	66	55	68	53	77	70	73	677

* Still rather dry, with only May having above the average rainfall. If you graph the results it shows January, April and October as having the widest fluctuations in rainfall with other months being less volatile.

Avg - figures calculated from 1997 to 2014

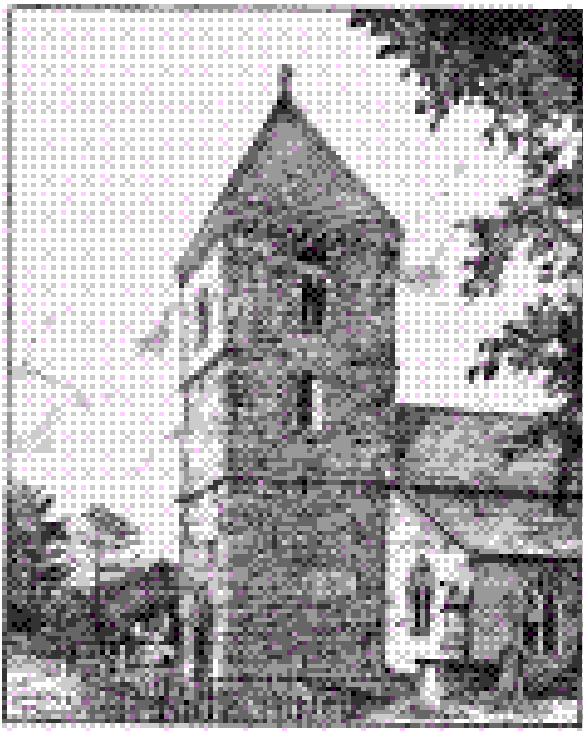
Figures reproduced with the permission of Robert Wainwright

July 1965 marked the last step in the dismantling of the railway track at Hovingham Spa Station. Residents said "it was with a feeling of nostalgia that a number of us learned of the dismantling of the railway track, and so, except for its house, Hovingham Spa Station is no more. Many of us remember trips to Scarborough, Malton and York; arriving by the 4 o'clock train and the neat pocket handkerchief sized gardens kept as neatly on the line-side - these are no more, and like the railway itself, already a memory."

We asked Jean Ellis for her reflections "I remember getting the steam train from Hovingham station to Scarborough soon before it closed in 1965. We were on a Sunday School trip, and I had Andrew, aged 8, and Stuart aged 3, with me. We got in the carriage, which had come from Gilling, with our packed lunches. In Scarborough we stayed on the beach all day before catching the train home. The next year we had to get a coach which parked up the hill in Scarborough, and after our day on the beach Andrew got lost trying to find it."

Margaret Bell

Our village - extracts from the 1965 WI Golden Jubilee Book



Our Village

On an evening in June at the close of a sun-drenched day,
 The grey Church clock strikes eight, and from their play
 The children trudge homeward. Away on the cricket ground
 The crack of ball on bat makes a pleasing sound,
 From the village schoolroom, set in its garden of roses
 Drifts the sound of music and the soft sweet lift of voices,
 The choir is at work. On the nearby Bowling Green
 The portly figures of white-clad players are seen.
 Hovingham Hall in stately splendor stands
 Guarding with kindly eye its pleasant lands
 The age-old woods on the hill-side in beauty rise,
 On meadow and Church, on cottage and shop and green,
 Evening descends to bless our country scene.

(Mrs.) F.J. Featherstone.

The village set on the side of a hill,
 Its homes built of stone from the quarry
 The village green, where children play, adding music to the quiet day.
 Ancient trees by the side of the road,
 glimpses of gardens, aglow with flowers.
 The hall, the trees, with the Church nearby;
 The clock in her tower, reminding us all of the passing hour.
 The winding road goes down to the brook,
 The over hills and away to the nook.
 Our sons and daughters travel far, sailing the seas and skimming the skies.
 What are the thoughts of those who roam
 Are they of cricket and woods alone?
 There's a gleam in the eye and proud tilt of the head
 When they hear of things that are done and said in
 HOVINGHAM – OUR VILLAGE.

(Miss) I. Potter.



What's happening with the planning application?

Ryedale is in the spotlight of the fracking debate. The current planning application submitted by Third Energy to North Yorkshire County Council is for **both** a test frack and full production. The implication of this for Ryedale means that there is no longer a two stage permission process. If the planning application is passed, Third Energy will have permission to enter full scale fracking production across the areas of Ryedale where they hold licenses as a precedent will be set.

Third Energy (the company who want to frack in Ryedale) submitted the planning application on 22 May 2015. The Minerals Planning Authority (NYCC) did not validate the application (as important information was omitted) and returned the application to Third Energy together with a 9 page letter detailing the reasons why it had failed. The initial application and the reason for failing the validation was front page news in the Yorkshire Post on Saturday 11 July 2015. The article can be found at <http://www.yorkshirepost.co.uk/news/main-topics/politics/catalogue-of-errors-blamed-for-collapse-of-yorkshire-fracking-bid-1-7353428>

The application was subsequently amended by Third Energy and was resubmitted on 02 July 2015. It failed validation for a second time (this is breaking news at the time of writing 21 July 2015).

Have Third Energy applied for any other permits?

Any fracking proposal will require one or more permits from the Environment Agency, in this case there are three. On 16 June 2015 the Environment Agency held an open day at Kirby Misperton to give the public an opportunity to discuss with them their concerns relating to fracking in the context of the Environmental Permits applied for by Third Energy. The consultation period for the Environmental permits was extended by over a month to 07 August 2015 as the application is considered to be of 'high public interest'.

What's happening at Ryedale District Council?

In July 2015 Ryedale District Council voted against a proposal to create a working group about fracking in Ryedale. This would have been an opportunity for the Council to gain a deeper understanding of the concerns of local residents and businesses. Irrespective of whether you are for or against fracking, there are many considerations to be taken into account in relation to fracking that will affect all residents of Ryedale.

What does our newly elected MP say?

Our newly elected constituency MP Kevin Hollinrake has attended several events in Ryedale since his election in May 2015. Kevin is open about being in favour of fracking but he does have several serious concerns that he wants addressed including

- avoiding industrialisation of the countryside
- suggesting a distance between wellsites of 6 miles (a buffer zone)
- having a fully independent testing and monitoring regime with results fully published in the public domain
- publication of an unredacted version of the DEFRA report (see below)

Kevin led a debate on fracking in Westminster Hall on 30 Jun 2015. It can be viewed on Parliament TV

<http://www.parliamentlive.tv/Event/Index/2ec1c19f-6aa5-46d9-8b7b-0ae4cd134813>



Continued

What did the unredacted DEFRA report say?

On 01 July 2015 the previously redacted DEFRA report (March 2014) covering the socio-economic impact of fracking in local communities was released. The original publication had 63 redactions. The unredacted report shows the likely negative effects to be on the rural economy, tourism, increased traffic, loss of tranquility and house prices. The report said that a low number of jobs will be generated locally and these are most likely in the service sector or supply chain. The nature of the Oil and Gas industry is that it is highly specialist and it has its own itinerant specialist workforce. The report can be viewed at the following link:

https://www.gov.uk/government/uploads/system/uploads/attachment_data/file/440791/draft-shale-gas-rural-economy-impact-report.pdf

What happened in Lancashire recently?

Lancashire County Council rejected two planning applications submitted by Cuadrilla to frack in the Fylde in July 2015. Important factors in determining the applications were landscape and traffic. As yet the applicant (Cuadrilla) has not made an appeal against the decision and they have a limited time in which to do so.

All this activity suggests there will be a lot more happening over coming months. I encourage all Ryedale residents to understand what is happening and the implications. Third Energy's planning application and intentions are to carry out a test frack followed by full production with all that means for residents, business, agriculture, tourism, public health and transport.

David Davis, Hovingham July 2015



Home too small to entertain?

There's a LOT
more space
at our place!

Hovingham Village Hall

Call Janice on 01653 628952 or visit www.hovingham.org.uk



Beef, Lamb & Pork – Free Range Eggs – Fresh Seasonal Vegetables
Choice of Sausages, Burgers and Sweet Cured Hams
Fresh Turkey and Chickens Available for Christmas
Orders taken NOW

We are only 2 miles West of Hovingham

Everything we sell is grown or
born & reared on our farm



THE WALL, COULTON
CORNER HOUSE FARM, COULTON, HOVINGHAM, YORK

OPEN 24 HOURS, 7 DAYS A WEEK

PHONE: 01347 888293 www.thewall-coulton.co.uk



Thundercliffe's



THUNDERCLIFFES THUNDEROUS FISH BOXES
to collect from Hovingham Market a months supply of
fish of your choice

or we can make you a catch of the day fish box
all individually packed and labelled for you to freeze
no minimum or maximum amount

Tel or Text 07948 502476 tel 01439 771050

FACEBOOK TWITTER www.thundercliffes.co.uk

Delivery possible but it would be nice to see you there

*Simple, innovative and
caring funeral services*

Giving you space
and time to choose

*Your wishes
matter to us*

Last Wishes

Christine Dudzinska

01653 627170 | 07824 639 244

www.lastwishesfunerals.co.uk





Mr Moore the Schoolmaster



Mr Bean the Blacksmith



Mrs Dawson



Mary Fox



*Dick Suffield - what a face -
He looks like a charmer!*



Tom Marshall - the Cartwright



Mr Alf Skelton



Mr T Lister



Mr Bingley Day

A selection of images taken from the Yorkshire Film Archives (c) showing Hovingham faces from 1930 to 1935. Despite the famous liberating fashions of the 1920's and 30's, these people all dressed in what seems Victorian or Edwardian style, women all in full length skirts!! The men are more varied, some look quite dapper.

Ann Chapman



A group of men working on the construction of a Dutch barn. The wooden frame has been erected, and long ladders allow men to go up and down to fix beams that are being hoisted. Beams are lifted using ropes. No Health and Safety here!



Mr Brown and two men hack at the base of a tree with axes to make deep enough cuts, then three men use start to use a long saw to finish cutting down the Scots Fir. The tree finally collapses, and the men chop off the smaller branches with axes. Whew!!



Mr Judson and a man digging drains - all by hand with the mandatory observer leaning on a cane



Some things don't change; 1930's home delivery style, horse and cart - nowadays a petrol driven van!



Children skipping in Main Street - just try doing that now!

Hovingham Village Website - contact [Caroline Davis, Janice Wood or David Richardson](#).

- The website sponsored by the Action Group is in the process of major revision and updating. All local businesses and services have been added to provide a comprehensive source for local people and visitors to the area. It is hoped to obtain funding for the website for the next 3 years and discussions are ongoing with relevant parties.

Environment and Wildlife - contact [Ann Chapman or David Richardson](#)

- All road and street signs in the village were cleaned in May. This is a once a year task and along with many other initiatives projects the village in a good light

Market - contact [Peter Stark](#)

- Visitor numbers at the June market were again excellent. However it was a very windy day and this caused problems, with one stall blowing over and other stalls having to be relocated. The market continues to be very successful and the PR efforts put in by the market Group are paying dividends.
- New volunteers to help with the running of the market are always very welcome; also any Community Group wanting to run a Community Stall should contact the Market Group.

Playground - contact [Ann Chapman, Carol Battersby, Rosemary Stewart or David Richardson](#)

- A memorial plaque ceremony to commemorate Sir Marcus Worsley was held on a sunny afternoon in June. There was a great turnout from the village and the school played their part, making it a great occasion.
- The wooden train has been spruced up with paint in 2 bright colours and this has transformed this item of equipment.
- A recent inspection by an independent inspector highlighted a number of minor issues which need to be rectified.
- As the Playground is self funded and regular maintenance of the equipment/grass cutting is an ongoing requirement any donations, and offers of help, would be gratefully received.
- Contact us if you would like to be involved in various ongoing initiatives.

Neighbourhood Watch - contact [Phil Chapman](#)

- Regular emails and information on criminal activity from the police continue to be sent out. Villagers should be vigilant and report any suspicious activity to the police.

Snow Clearing and Gritting - contact [Phil Chapman](#)

- We are currently undertaking a survey of the current grit bin locations so we can ask NYCC to take care of filling the most important bins and the Action Group would take care of the rest. This will also allow grit requirements for the forthcoming winter to be determined and delivery arranged via NYCC and the Parish Council.
- Volunteers to help keep strategic pavements clear are always welcome

Please contact any of the groups directly or via emails to action@hovingham.org.uk

David Richardson, 23 July 2015



**Hovingham
Fireplaces**

Worsley Arms Business Park,
Hovingham, York, YO62 4LA
Phone: 01653 628222

Fireplaces
Marble & Granite surrounds
Gas Fires, Stone Fireplaces
Multi Fuel Stoves
Granite Worktops

www.hovinghamfireplaces.co.uk



Station Road, Helmslev. YO62 5BZ (01439) 771166

Dedicated small animal practice in modern purpose-built premises. Our friendly team of four vets, four fully qualified nurses and support staff are all committed to providing the best possible care for your pets. We are your pets' GP, surgeon, dentist and midwife.



With branches at Kirkbymoorside & Pickering

www.edgemoor-vets.co.uk

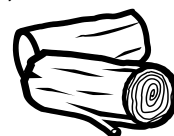
Hovingham Estate www.hovingham.co.uk

Residential property - The Estate has residential property to rent, ranging from 2 bedrooms to 5 bedrooms, all situated within the village. **Contact:** The Estate Office on 01653 628771

Logs for sale - The Estate sell logs in varying load sizes which can be delivered within 1 mile of Hovingham Village. **Contact:** David Blades on 01653 628357

Please note due to harvest logs cannot be delivered during the months of August and September.

Holiday Cottage – Spa Cottage; is an attractive 3 bedroom, 2 bathroom cottage that sleeps 6 in comfort. For bookings please contact Rural Retreats at www.ruralretreats.co.uk or telephone 01386 701177



GENERAL - Hovingham & Scackleton

- **Bus Services** - NYCC Consultation closes on 14th August 2015. This includes proposals to reduce 31X service from Helmsley and Whitby Coastliner during the Winter. There are no proposals to change the Hovingham to Helmsley and Malton bus services.
- **Grass Cutting** - Scackleton cutting not up to standard and problems when vehicles parked by Hovingham telephone box. To be discussed with Cliffords.
- **Maintenance Projects** - Proposed projects have been identified (below). The Estate contacted regarding the fence between the Village Hall and Stone House.
- **Police** - New police officer and PCSO cannot make the September or November meetings. Alternatives to discuss Speeding and Crime Prevention to be proposed. **Residents are reminded to immediately contact 101 to report matters of concern.**
- **Speedwatch** - Following complaints about speeding in Hovingham a speed camera has been monitoring speed of vehicles outside the school.

SCACKLETON**Mobile Phone Mast**

- Two site visits made by Parish Councillors. A planning proposal is still to be made to RDC.
- Most Scackleton residents are in favour.
- The mast will have a range of about 3km, aimed mainly at residents in Terrington and will not improve computer broadband in Scackleton, except when mobile broadband is used.

FINANCE

- Achieved saving of £140 on insurance.
- VAT Return has been paid by HMRC.
- Agreed to donate £25 to RDC Chairman's Charity Fund.
- Agreed to purchase 10 tonnes of grit, for £200, to be shared between Action Groups.
- Agreed to budget £450 towards posts on Top Green. Detailed proposal to be submitted on repair, replacement and future protection of posts from strimmer damage.

FUTURE PARISH COUNCIL MEETINGS 2015

9th Sept. - 7pm Hovingham Community Room
11th Nov. - 7pm Hovingham Community Room

RYEDALE DISTRICT COUNCIL**from Councillor Robert Wainwright (Hovingham)**

The full Council met on 9th July when priorities for the next "term" will be set out to:

- create conditions for economic success
- meet housing need
- high quality, clean and sustainable environment
- safe and active communities
- transform the Council

Savings of over £1m need to be made over next 4 years. This will involve losing staff, together with other councils and removing non-statutory services.

HOVINGHAM

- **Action Group** - A report was submitted. In addition, the poor condition of the recycling centre in Hovingham was discussed and Ryedale Streetscene will be asked for assistance.
- **Cemetery Maintenance** - Cemetery Wall repairs will be completed over the summer, weather permitting.
- **Hand Rail - York Hill** - The Estate have hand rail and this will be erected when time allows.
- **Pasture Lane Footpath** - The clerk will contact Trilandium regarding finishing surface of pavements and roadway, clearing of rubbish from land behind Malt Shovel and erection of fence between Malt Shovel and new footpath.
- **Pasture Lane Fund** - RDC have provided report on status of grants and claims under this fund and groups will now be asked to confirm details correct. Councillor R. Wainwright asked to feedback any information to Mr G. Housden at RDC.

Any Other Business

- **Awards to Community Groups by NYCC Chairman** - Hovingham Action Group and the Hovingham Village Market have been nominated for these awards.
- **Council Transparency Code** - It was agreed to accept the offer from RDC to publish data from the Parish Council on its open web pages.
- **Hovingham Overflow Channel** - It was agreed to ask D. Skelton to clear the channel before harvest.
- **Hovingham Playground Parking** - Councillor Ms M. Grippaios raised this problem. The turning area is also be used by users of the Cemetery, walkers and residents making only current solution use of the Village Hall Car Park.

PROPOSED MAINTENANCE PROJECTS (to be prioritised, defined, costed and approved by Council over next 5-10 years)

Cemetery - Repair gravestones and prune trees

- Maintain walls and gates

Village Car Park (joint responsibility of Village Hall Management Committee and Parish Council)

- Repair/Restore wall alongside pavement

- Repair/Restore wall shared with Malt Shovel

- Re-surface car park and achieve adequate drainage

- Resurface and realign entrances to main road

Village Railings - Repair, replace and paint posts and railings

August 2015

1 st Sat	Hovingham Village Market - 10:30am to 1:30pm - Hovingham Village Hall Please come along and support the Market; Hovingham Bowls Club will be running the Community Café.
2 nd Sun	Matins Service - 10:30am Hovingham Church Methodist Service - 10:30am Hovingham Chapel with J. Lakin Ryedale Festival Closing Service - 6pm Hovingham Church
3 rd Mon	Recycling Collection - Recycling and COMPOST Bins
4 th Tue	Scrumptious Fish & Chip Van - 5:35pm Hall Green, opposite Village Hall
9 th Sun	Eucharist Service - 10:30am Hovingham Church Methodist Service - 10:30am Hovingham Chapel with M. Sellers
10 th Mon	Landfill Waste Collection - Green Bin Supermobile Library in Hovingham - 5pm until 7pm - Location Hall Green
11 th Tue	Scrumptious Fish & Chip Van - 5:35pm Hall Green, opposite Village Hall
16 th Sun	Methodist Service - 10:30am Hovingham Chapel with T. White
17 th Mon	Recycling Collection - Recycling and COMPOST Bins
18 th Tue	Scrumptious Fish & Chip Van - 5:35pm Hall Green, opposite Village Hall
23 rd Sun	Benefice Eucharist - 10:30am Slingsby Church Methodist Service - 10:30am Hovingham Chapel with A. Hudson
24 th Mon	Landfill Waste Collection - Green Bin Supermobile Library in Hovingham - 5pm until 7pm - Location Hall Green
25 th Tue	Scrumptious Fish & Chip Van - 5:35pm Hall Green, opposite Village Hall
30 th Sun	Benefice Iona Style - 10:30am Appleton Church
31 st Mon	Bank Holiday - Car Boot Sale organised by Hovingham All Saint's Church

September 2015

1 st Tue	Recycling Collection - Recycling and COMPOST Bins
5 th Sat	Hovingham Village Market - 10:30am to 1:30pm - Hovingham Village Hall Please come along and support the Market; Hovingham Action Group will be running the Community Café. Hovingham Bowls Club - Race Night - 7pm Hovingham Village Hall Tickets £7.50 including buffet supper
6 th Sun	Eucharist Service - 10:30am Hovingham Church Methodist Service - 10:30am Hovingham Chapel
7 th Mon	Landfill Waste Collection - Green Bin Supermobile Library in Hovingham - 5pm until 7pm - Location Hall Green
8 th Tue	Scrumptious Fish & Chip Van - 5:35pm Hall Green, opposite Village Hall
13 th Sun	Eucharist Service - 10:30am Hovingham Church Methodist Service - 10:30am Hovingham Chapel
14 th Mon	Recycling Collection - Recycling and COMPOST Bins
15 th Tue	Scrumptious Fish & Chip Van - 5:35pm Hall Green, opposite Village Hall
20 th Sun	Morning Praise - 10:30am Hovingham Church Methodist Service - 10:30am Hovingham Chapel
21 st Mon	Landfill Waste Collection - Green Bin Supermobile Library in Hovingham - 5pm until 7pm - Location Hall Green
22 nd Tue	Scrumptious Fish & Chip Van - 5:35pm Hall Green, opposite Village Hall
25 th Fri	MacMillan Coffee Morning - 10:30am to Midday at Worsley Arms Hotel If you would like to donate a cake or raffle prize please free to do so, or just pop in for coffee and catch up on the gossip between 10.30 and midday.
27 th Sun	Benefice Service - 10:30am Hovingham Church Methodist Service - 10:30am Hovingham Chapel
28 th Mon	Recycling Collection - Recycling and COMPOST Bins
29 th Tue	Scrumptious Fish & Chip Van - 5:35pm Hall Green, opposite Village Hall