



# The Hovingham and Scackleton Newsletter



April 2015

## Welcome to the Hovingham and Scackleton Newsletter

Welcome to the arrival of Spring and to the newly opened 'The Park at Hovingham' hair and beauty salon with coffee house. We have plenty to celebrate and enjoy in Hovingham with the 200<sup>th</sup> anniversary of the Chapel, the Easter hen trail at the April Market, and the Flower & Music Festival to look forward to.

There's news from the Ryedale Carers Support service and the launch of two collection points for the Foodbank initiative. We also have an update about fracking and what the scale and impact of this new industry may mean for Ryedale. And on a lighter note, we reveal the story behind a birthday gift that is creating local and visitor interest alongside the beck.

This newsletter is available in colour for you to share with your family and friends, wherever they live around the world. You can download this from the village website [www.hovingham.org.uk](http://www.hovingham.org.uk) or subscribe by email by contacting [newsletter@hovingham.org.uk](mailto:newsletter@hovingham.org.uk)

Caroline Davis

## Children's Easter Egg Prizes at the April Village Market



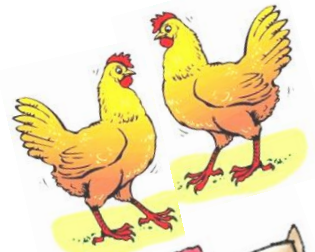
### Calling all children - calling all children

### Come and join the fun

### Search for the hens and win an Easter Egg

### Free entry at the Hovingham Village Market

### Saturday 4th April from 10.30am



## Litter Picking Event for Hovingham - Saturday 11th April

Each year the Hovingham Action Group organises a Litter Pick. The amount of litter is a blight on the landscape and can also be dangerous to wildlife. Quite why people drop their litter in the countryside and elsewhere is hard to understand.

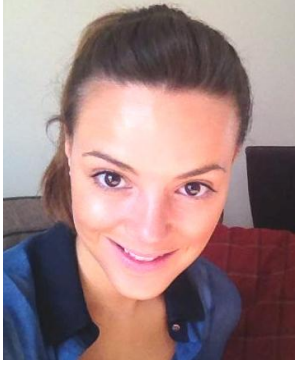
As part of the 'Big Tidy Up' campaign, we will have rubbish sacks, gloves, safety vests and litter picker devices available for all those that help. The Worsley Arms will be offering a complimentary 'Coffee and Cakes' to the team as a thank you. We are grateful to Sally and Tony Finn for their generosity. Ring David Richardson on 628 227 for more details.

### Did you Know?

Police Community Support Officers and the Council's own officers, can issue on-the-spot Fixed Penalty Notices for littering or prosecute offenders as littering is a criminal offence. The most common forms of litter such as cigarette ends, plastic bottles, sweet wrappers and matchsticks alone add up to an estimated 122 tonnes of such litter.



**If you can help for an hour or so, meet us outside the Worsley Arms on Saturday 11th April at 10.00am and join us for Coffee and Cake afterwards.**



### Wanting to tone up? Lose weight? Improve flexibility? Or achieve a fitness goal?

Katie Mae Ellis is a local Hovingham born qualified personal trainer for over 4yrs and is here to help you all achieve your goals whatever age or fitness level!

Offering both private one to one or small group sessions coming to your homes at a time to suit you! Sessions offer nutritional advice and programs to follow between sessions. Training is both indoors and out - it can be fun!

Try a new Stretch & Balance class on Monday 13<sup>th</sup> April at 11.15am, Hovingham Village Hall.

Get in touch for more information or to book sessions. Call or text 07515406097

## Tour de Yorkshire - big names and big teams are competing

Sir Bradley Wiggins (winner of the Tour de France amongst many others races) will be there with his new team 'Team Wiggins'. As will Marcel Kittel and Dame Sarah Story. Seven of the eleven teams who competed in last years Tour de France will take part, team riders to be announced in April. Racing is from Friday 1st May to Sunday 3rd May.



The nearest viewing option is Norton (on the B1248) around 13.30 on Saturday 2nd May; or York (B1036) from about 14.30.

For more information: [letouryorkshire.com/sportive](http://letouryorkshire.com/sportive)

-- On your bike!!

*Ann Chapman*

Selby	11:20
Market Weighton	12:18
North Newbold	12:28
Beverley	12:45
Wetwang	13:22
Norton/Malton	13:48
Stamford Bridge	14:15
Murton	14:29
York	14:42
York Lap One	14:42
York Lap Two	15:09
York Lap Three	15:36

## Foodbank collections to commence in Hovingham Church and Chapel

One of the outcomes from the recent Lent Study Group, at which poverty was discussed, was the proposal to introduce Food Banks in all our Benefice and Methodist Churches. The local organiser of the Trussell Trust will provide us with boxes into which donated food may be deposited. Donations are provided only to meet an immediate emergency, and recipients are recommended to the Trust by doctors or social workers. Clearly certain fresh foods are not really appropriate and the Trust has asked that donated food should come from the suggested list :

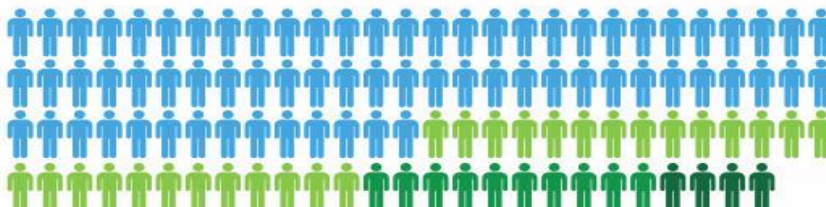
In Hovingham Church we have already put a box in the Tower Room and the Chapel has also got a box in place. So please help feed local people in crisis by buying items from our list and donating them, through us, to Ryedale food bank.

*Maureen Lucas*



### Numbers given 3 days' emergency food by Trussell Trust foodbanks

2013 - 2014	913,138
2012 - 2013	346,992
2011 - 2012	128,697
2010 - 2011	61,468



Milk (UHT or powdered)  
Sugar (500g)  
Fruit juice (carton)  
Soup  
Pasta sauces  
Sponge pudding (tinned)  
Tomatoes (tinned)  
Cereals  
Rice pudding (tinned)  
Tea bags/instant coffee  
Instant mash potato  
Rice/pasta  
Tinned meat/fish  
Tinned vegetables  
Tinned fruit  
Jam  
Biscuits or snack bar



It's amazing to think that it will soon be 200 years since the first service in Hovingham's little Chapel. Real cause for celebration. How quickly diaries get filled in this busy life, so please book the weekend of 13th and 14th June when the celebrations for this event will take place. Saturday 13th the Chapel will be open all day. Sue Goodwill will reveal her fascinating research into the Chapel's history, and will be joined by members of the Wesley Historical Society when she gives a talk at 3.00pm. In addition there will be an evening concert when we will be hosting the York Gospel Choir in the Village Hall.

Sunday 14th the actual Anniversary Service will be taken by Rev David Emison. David's last ministry was served in Helmsley and he was regarded as "The top Methodist Minister" when he was Chair of the Cumbrian District. He it was who, at an early meeting regarding the future of Hovingham Chapel, encouraged us to "aspire" to the new facilities that we can now offer, and for this faith we are grateful.

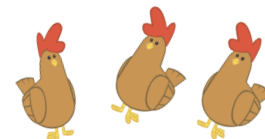
The service will be followed by Anniversary Cake and tea or coffee. By the beginning of May the Chapel will have been re-carpeted and re-decorated, so please come to see and enjoy the result of all the hard work and commitment that this has entailed, in order to secure the basis of a meaningful future for Methodist Worship in our village.

**Carol Battersby**

## Market News - Put a Spring in your step

At our spring time **April 4<sup>th</sup>** and **May 2<sup>nd</sup>** markets, we have a host of various seasonal plants, both ornamental and vegetable, available from Richard Wood's Plant Stall and The Wall. Spring is the time of year when even the most disinterested of gardeners are enthused and we've plenty to tempt you.

With our next market on Easter Saturday 4<sup>th</sup> April, we've a free to enter Easter trail for all children and prizes too.



We have your regular, local stallholders providing quality food produce and we welcome two new local guest stalls: 'Helmsley Brewing Company' and 'Pretty Sweet' of York (cakes and baking). New regular stallholders include Amanda Field (jewellery and millinery) and Fabulously Finished (home accessories and event décor). The Little Soap Factory is 11 years young. To celebrate they have tempting special offers and gift box offers too.



*New regular stallholders include Fabulously Finished (home accessories and event décor).*



*The Little Soap Factory is 11 years young. To celebrate they have tempting special offers and gift box offers too.*

The 4<sup>th</sup> April Community Café will be run by the Hovingham Cricket Club and the 2nd May will be run by the Hovingham Playground. Community Stalls are provided to local community organisations so they can promote their organisation, raise valuable funds and benefit from meeting local residents and visitors at the Market. If your local community group would like to run a Community Stall, please contact the Market Group, [themarket@hovingham.org.uk](mailto:themarket@hovingham.org.uk).

The Market is run by a team of volunteers for the benefit of the local Community and businesses. Volunteering is a great way to support our unique market and to contribute to the local community. New volunteers are always made very welcome and we look after you with refreshments too. Ask at the market for more details.

**Peter Stark**

## A first for Hovingham

Walking alongside the Beck, there's a new "must see" in Hovingham. Slightly tongue in cheek and reflecting the wit and fun of the recipient, a Blue Plaque has appeared to mark the 80<sup>th</sup> year of a well known resident. Eddie Lucas has lived and worked in Yorkshire since 1963, living the last 31 years in the village and has taught many children as a Geography Teacher at Malton School. Eddie contributes a significant amount to our community and is actively involved in the Church, Hovingham Village Market, the Newsletter and until recently, the Malton Lions Club. As a weekly squash player and supporter of Southampton Football Club, Eddie leads a busy life.



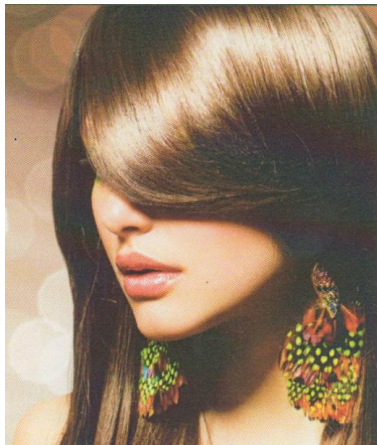
Initially reluctant to hang the blue plaque outside his cottage, Eddie now sees the pleasure this brings to others and is amused by the "terrific interest being taken by walkers and locals". I asked Eddie what he enjoyed about living in Hovingham. "It's a friendly village where we know most people and most people know us. We enjoy the garden and being involved in the church community. I like travel and I always say it's great to get away and always much better to get back".

Looking through a 'This is your life book' prepared by Eddie's family, his three children and ten grandchildren have inherited his sense of humour sharing some of their many stories about what makes Grandad Eddie special.

A very Happy Birthday Eddie.

*Caroline Davis*

## 'The Park' - Hair, Beauty, Coffee and Gifts opens in Hovingham



A brand new cosy coffee shop has opened in the heart of Hovingham.

The Park is run by family with 30 years experience! We also provide excellent hair and beauty treatments using top of the range organic products. And a selection of gifts too!

Please pop in to see what we have to offer and to have a look around. Becky & family

The Park Hovingham 01653 628969 Park Street,  
Hovingham



## July Hovingham Flower and Music Festival - a celebration of village life



This will take place at Hovingham Church and the gardens of Hovingham Hall over the weekend of 3rd to 5th July and will feature over 20 flower displays.

We are extremely grateful to Mr Ian Mosey who has agreed to sponsor the event.

The weekend will begin with a preview on the Friday evening with Ampleforth and Ryedale Concert Choir and with organ recitals. It will continue on the Saturday with live music, ending on the Sunday afternoon with a service of Songs of Praise at 4.00pm.



This exciting village event is to raise money towards the repair of Hovingham Church roof. More details nearer the event.

*Eddie Lucas*

Well, Spring hasn't quite sprung yet, or at least not as I am writing this. There are small signs of spring but the cold nights are holding things back. It has been quite dry which has allowed some work to get done on the land.

The first job I did was to go over the crops with some Phosphate fertiliser. Regular soil testing tells me which nutrients may be lacking from the ground and this year I found that applying straight Phosphate was the correct thing. Different rates per acre were applied to each field depending on how low the levels were. Once that was done I went over the cereal crops with fertiliser that contained Nitrogen and Sulphur. It was only a small amount of Nitrogen, just to give the crops a kick start when they come out of winter. Beans don't require Nitrogen, in fact they put it back down into the soil. Wheat that is grown after beans, as opposed to oats (which are also a break crop) can look greener in spring as Nitrogen is readily available in the soil. Years ago crops got sulphur from the atmosphere which had been discharged from factory chimneys; but not now as they have cleaned up sulphur emissions. It is now 2 weeks since the first dose of Nitrogen so I have been back over the crops with a bit more to try and encourage growth, even though it is still cold. Putting too much on in one go is wasteful as the plants can't take it all up and if it rains heavily it just gets washed through the soil.

Once the weather does warm up and crops begin to grow, it will be important to stop disease getting into them. Some fungicides do have a little curative effect which means that if disease is present they will stop it. However it is much better to stop the disease getting hold in the first place. Disease can harm yield greatly by reducing the green leaf area so prevention is better than cure.

One of the tasks all farmers have to do in spring is to fill out forms to send to DEFRA. This is so the Rural Payments Agency can process them and pay us money. We have to record what is grown in each field and the areas to 2 decimal places. The Common Agricultural Policy has once again changed and our country seems to have once again adopted the most complicated system it can think of. We were told that all forms must be submitted online by 15<sup>th</sup> May and we had to re-register our business with them. This is despite all fields being digitally mapped on various occasions over the years and our details being recorded. After spending £150 million the Rural Payment Agency have admitted defeat with the new computer system and said we will have to use paper and pen again.



Forms, forms and more forms.

19th March 2015 RPA Press Release says - there have been performance problems with the farmers online interface. The RPA is now offering farmers the use of established forms and processes to complete their claims by the deadline. The RPA will then input this data on to the system!!!! Oh well.....

They tried a new system in 2005 and spent over £300 million doing so. This system also failed. To spend that amount of money I feel is totally immoral. Apparently the majority of EU money for agriculture in this country is spent on admin to distribute it!

On a brighter note, we will soon be able to see livestock in the grass fields, hedges greening up and the countryside bursting into life. Despite being burdened with ever increasing bureaucracy and the feeling that in this country agriculture isn't a priority, it is still a good job to have.

**Mark Wilson**

## Rainfall at Hall Farm, Hovingham (in mm)

	Jan	Feb	Mar	Apr	May	Jun	Jul	Aug	Sep	Oct	Nov	Dec	Total
<b>2010</b>	83	58	47	21	11	37	42	42	82	64	74	31	<b>592</b>
<b>2011</b>	43	68	6	2	41	52	48	112	25	67	28	66	<b>558</b>
<b>2012</b>	49	16	20	148	48	102	110	76	113	97	137	122	<b>1038</b>
<b>2013</b>	57	24	52	14	83	48	26	55	57	90	55	57	<b>620</b>
<b>2014</b>	127	58	38	23	35	54	52	94	29	72	108	48	<b>738</b>
<b>2015</b>	26	20											
<b>Avg</b>	<b>60</b>	<b>48</b>	<b>38</b>	<b>45</b>	<b>46</b>	<b>58</b>	<b>50</b>	<b>62</b>	<b>53</b>	<b>68</b>	<b>63</b>	<b>58</b>	<b>619</b>

\* Gosh, a very dry January and February and still no snow, plenty of bugs in the garden no doubt and there seem to be a lot of garden birds around ....

**AVG** - figures calculated from 1994 to 2013

Figures reproduced with the permission of Robert Wainwright

The spring term has been short and very busy, with lots going on in both classes. Class 1 spent the first half of the term working on the theme "Pirates". There was lots of swashbuckling action, songs and story writing. They even had a local authority adviser joining in their maths singing game on the playground and loving it. It was all rounded off with an amazing Pirate Party.



This second half term's work on animals included a visit to Edgemoor Vets to see how the veterinary staff look after our pets. Mrs Skinner's dog Rusty went along too and loved meeting the children.

The theme in Class 2 has been "Stone Age to Iron Age", a new theme that has gone down really well. The highlight was a visit to Welburn Hall School where our children worked outside with staff and students from Welburn to experience a taste of life as Stone Age men; lighting fires with flints, cave painting with animal fat, charcoal sticks and pigments that they found around them and making and shooting bows and arrows.

A group of eleven children joined up with others from St. Hilda's and Gillamoor Schools to take part in our annual residential visit. This year we went to Bewerley Park Outdoor Pursuits Centre, near Pateley Bridge. The children spent three full on days outside, raft building, gorge scrambling, shelter building, orienteering and rock scrambling at Brimham Rocks. As always it was a fantastic experience for them.

Mrs Harland organised a "March Into Reading" month throughout March, which has created a real buzz about reading in school. She revamped the library, and we had a week of activities during our very own Book Week, with children and staff dressing up as a character from a book on World Book Day. Parents, governors and friends have come into school to share and read from their favourite books, which the children have really enjoyed.

As well as all of that we have; taken part in sports competitions, led the Mothering Sunday Service, held a "Bake Off" cake sale for Comic Relief and created fantastic decorated eggs for the Hovingham Easter Market competition! Roll on the Easter holidays.

**Mark Wilson**

## General and Local Elections Thursday 7th May 7am to 10.00pm

If you are over 18 years old you can vote in the forthcoming elections. **Registration** must take place by the 20th April and can be done by post or online at; <https://www.gov.uk/register-to-vote>

The 21st April is the deadline for applications for **Postal voting**, the form can be found on this web page <https://www.gov.uk/government/publications/apply-for-a-postal-vote>

You will receive your Poll Card by Post about 28 days before the election, this will show the polling station you should use. Take your 'Poll card' with you to vote (it's not essential) or use your postal vote.

Party	Candidate
Conservative	Kevin Hollinrake
Green	Chris Newsam
Independent	Martin Cruttwell
Independent	Philip Tate
Labour	Alan Avery
Liberal Democrat	Dinah Keal
UKIP	Toby Horton

- Our Parliamentary electorate is **Thirsk & Malton** and the sitting MP Anne McIntosh (Conservative) is not standing again.

The list of current candidates is shown here (but the formal Notice of Election is not issued until the 31st March) so it may change.

- Our District Council is **Ryedale** and the Ward is **Hovingham**
  - Our Parish Council is **Hovingham cum Scackleton**
- Nominations have not yet closed for District and Parish

**Ann Chapman**

194		Malton and Helmsley via Nunnington									
Monday to Friday		School Days	Holidays & Saturday	Saturday	Monday to Saturday						
Helmsley	0725	0755	0815	0815	0855	0955	1030	1230	1415	1600	
Hovingham	Amotherby	Amotherby	Amotherby	Amotherby	Swinton	Amotherby	Swinton	Amotherby	Swinton	Amotherby	
via	0750	0822	0900	0840	0922	1020	1120	1222	1322	1440	
Malton										1625	
										1650	

[ ] Time at Malton, Newgate

Monday to Saturday		School Days	Holidays & Saturday	Monday to Saturday							
Malton	0930	1030	1130	1245	1345	1445	1445	1535	1700	1730	1800
via	Amotherby	Swinton	Amotherby	Swinton	Amotherby	Swinton	Amotherby	Amotherby	Swinton	Amotherby	Amotherby
Hovingham	0955	1055	1155	1310	1410	1510	1510	1605	1725	1755	1825
Helmsley		1120		1335		1535			1750		

(Only to Helmsley on Saturdays and School Holidays)

### Malton - Rail Connecting Services

Malton Railway Station  
York Railway Station

0801\$	0910	1010	1110	1210	1310	1410	1510	1710	1810	1910
0828\$	0937	1037	1137	1237	1337	1437	1537	1737	1837	1937

\$ Saturday rail service departs Malton 0727 arrives York 0755, another service departs Malton at 0810 and arrives York 0837

York Railway Station  
Malton Railway Station

0838	0938	1038	1138	1238	1338	1438	1538	1638	1738	1838
0902	1002	1102	1202	1302	1402	1502	1602	1702	1802	1902

**Please use your bus service -whenever you can.**

We will lose this vital service if usage is not maintained and increased.

Bus services are operated with the financial support of North Yorkshire County Council

Changes are effective from 1st March 2015 and will be reviewed again february 2016



[www.northyorkstravel.info](http://www.northyorkstravel.info)

## Ryedale Carers Support - helping Carers and Older People in Ryedale

**Could you spare a couple of hours each week or fortnight to make someone's day?**

*"Being a carer is a real challenge, nothing can prepare you for the intense and relentless exhausting daily routine which is why I value the Ryedale Carers Support volunteer sitting service so much. It gives me some precious time to relax and switch off for a couple of hours."*

Ryedale Carers Support (a local voluntary organisation and registered charity) provides practical and emotional help for carers, the people they care for and older people living on their own. Dedicated volunteers can visit weekly, fortnightly or monthly for a couple of hours or so.

We run a sitting service for carers, to enable carers to have a break from their caring responsibilities. This service is free to carers, and the volunteer's expenses are met by the organisation. We also run a visiting service for elderly people living alone, who have few social contacts and would enjoy some extra company.

Just a small amount of your time each week or fortnight could bring companionship to an older person living alone, or allow a carer to have a much needed break from the pressures and responsibilities of looking after someone full time. As a volunteer with Ryedale Carers Support you will not be asked to do any lifting, or provide any medical or personal care. The volunteer's role is simply to provide friendly and supportive company.

All out of pocket expenses, such as travel expenses are met by Ryedale Carers Support and our volunteers have the opportunity to meet other like-minded people at our social and training events, all of which are optional. The work we do offers a rewarding sense of satisfaction and you will be helping people often overlooked in the busy day to day life of our local community.

If you would like to talk through the possibilities of becoming a volunteer please contact Ryedale Carers Support on 01751 432288 or email us at [enquiries@ryedalecarers.org.uk](mailto:enquiries@ryedalecarers.org.uk)

For further information please visit our website [www.ryedalecarers.org.uk](http://www.ryedalecarers.org.uk)



I encourage all Ryedale residents to do their own research into the issues raised by fracking. I like to deal in actual facts and it now becomes difficult as the full picture of the plans for Ryedale have yet to be disclosed. From publicly available documents, I have prepared a plan of the potential scale of this new industry in 15-20 years from now for the area where Third Energy have licenses. This excludes other areas in Ryedale where other operators hold licenses. So how do I get an idea about what fracking would look like in the context of Ryedale?

As yet no one has permission to frack in Ryedale, though Third Energy intend to submit a planning application for a test frack at Kirby Misperton. Should planning permission be approved, this will set a precedent for wholesale fracking across Ryedale. I turned to the Select Committee for the Environment, Food and Rural Affairs (DEFRA), chaired by Anne McIntosh MP. Their most recent session relating to fracking was on Tuesday 10 March 2015 at 1500hrs. The second witness giving evidence was John Dewar, Third Energy Operations Director (the company who wish to test frack at Kirby Misperton). The whole session can be watched on Parliament TV at: <http://parliamentlive.tv/event/>

This is what he said (in part) in his evidence

- That he considered in addition to 9 sites where Third Energy already have permission (to drill) for conventional gas, they would probably need another 10 gas sites in Ryedale. Third Energy would propose to extract gas using hydraulic fracturing from all 19 well sites
- When questioned, John Dewar said that there could be up to 50 boreholes on each of these 19 well sites. With 50 boreholes per site, that would be 950 boreholes across Ryedale.

I am now getting the picture of the 'gas farms' as John Dewar called them at the Ryedale District Council 'Unpacking Fracking' debate back in February 2015. At the consultation days Third Energy have hosted in respect of their planning 'duties' (prior to making their application to test frack), the question has been asked, 'how long does it take to drill a borehole down to between 8,000 and 10,000 feet below ground level? The answer was 'around 100 days'.

So to extrapolate this, it would mean on a site with 10 boreholes to be drilled, 1,000 days (nearly 3 years) of drilling which is a continuous 24/7 operation irrespective of whether it's Christmas Day or Easter Sunday. Across all 19 sites, this would equate to over 250 years of drilling: some of this will happen simultaneously. The impact locally will be on a scale not previously experienced in Ryedale. See the map opposite which shows the well sites.

The planning application by Third Energy for natural gas and to reinject water and drill a 2nd borehole at Eberston Moor, was deferred by NY Moors National Park Planning on 19th March because they had significant concerns about the application in relation to issues such as the risk of water pollution and the many other environmental consequences.

Local residents who have seen the film 'Groundswell Rising' are now aware of what fracking in Ryedale will do to our landscape and lives. The film was shown again in the Worsley Arms on Tuesday March 31st at 2.30pm.

One last piece of evidence from the DEFRA Select Committee. John Dewar said that he believes 'that the silent majority of residents are in favour of Third Energy's plans'. This does not ring true with the cross section of over 1000 Ryedale residents I have spoken to in the last seven months.

This in my opinion, and on the basis of the current known information, would be a new 'industrial revolution' which would change the face of Ryedale forever.

*David Davis. Hovingham*

### **Hovingham Estate** [www.hovingham.co.uk](http://www.hovingham.co.uk)

**Residential property** - The Estate has residential property to rent, ranging from 2 bedrooms to 5 bedrooms, all situated within the village. **Contact:** The Estate Office on 01653 628771

**Logs for sale** - The Estate sell logs in varying load sizes which can be delivered within 1 mile of Hovingham Village. **Contact:** David Blades on 01653 628357

Please note due to harvest logs cannot be delivered during the months of August and September.

**Holiday Cottage** - Spa Cottage; is an attractive 3 bedroom, 2 bathroom cottage that sleeps 6 in comfort. For bookings please contact Rural Retreats at [www.ruralretreats.co.uk](http://www.ruralretreats.co.uk) or telephone 01386 701177



An exquisite, timeless country house setting  
with open log fires and stylish furnishings.  
All bedrooms have private bath, telephone, TV and room service.  
Four-poster suite for special occasions.  
Main Street Hovingham, York. Tel 01653 628234  
[www.worsleyarms.co.uk](http://www.worsleyarms.co.uk)

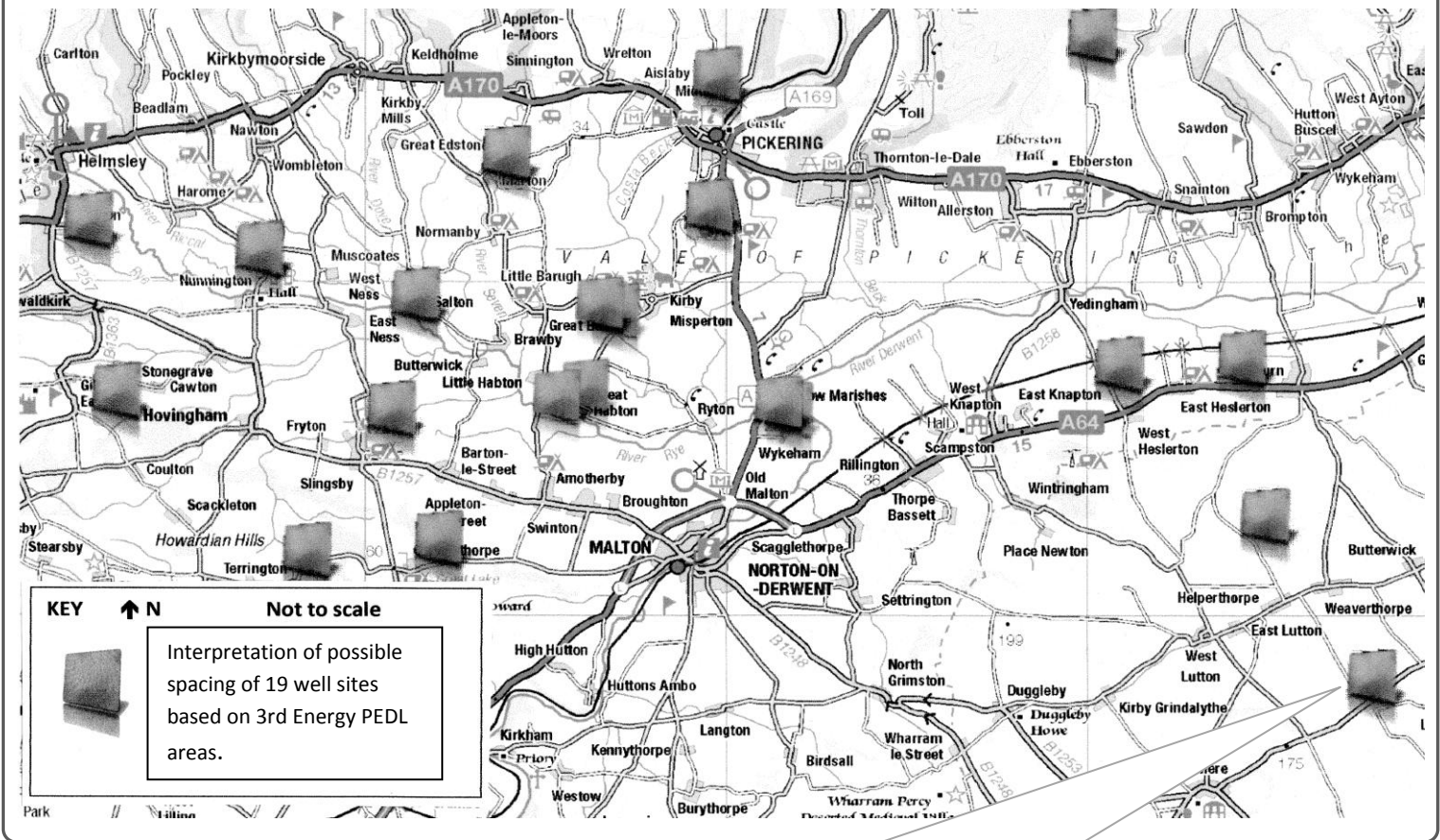
### **Need help with your Computer?**

Internet, hardware, software, upgrades, repairs, tuition, or simply an introduction to your PC... sorted in your own home.

Martin Underwood 01653 619293  
07748 632563

**Underwood Computer Services**





Fracking: trying to draw the picture:  
 For each of these 19 well sites there could be up to 50 bore holes.

## Councillor Wainwright says 'find out about fracking'

**Letter from Councillor Robert Wainwright, published in the Gazette & Herald, 18<sup>th</sup> March 2015.**

RYEDALE District Council organised a meeting called Unpacking Fracking at the Milton Rooms in the middle of February, which I was unable to attend. Some days later I went to the Third Energy meeting at Kirby Misperton where the company explained what it would be doing at the village well site and how it would be managed.

To try to balance the argument, I attended a meeting in Hovingham Village Hall recently organised by the [Frack Free Ryedale](#) group to find out its views about the dangers to our community should fracking take place in our area.

I was genuinely alarmed by the information I saw and heard on the video\* that was shown.

There are two sides to the fracking debate. If only half the numbers suggested by Frack Free Ryedale on vehicle movements, the amount of water needed and the length of time the drilling operation would take to make the project viable are to be believed, then we would be converting our beautiful landscape into a huge industrial area for ever.

Third Energy presents a “best case scenario”, which, if true, paints a rosy picture. However, should planning permission be granted for fracking, it is the thin end of the wedge and there would be no stopping further expansion of areas used, vehicle movements and hours that drilling and fracking would be allowed.

Residents of Hovingham and surrounding villages please take every opportunity you can to find out about fracking, whether on the internet or attending a local meeting. Do not believe that it would not have a massive impact on your life or that of future generations. You like me could find yourself shocked at the irreparable damage that would happen to our idyllic life in the heart of Ryedale should fracking take place. **Robert Wainwright, Ryedale district councillor, Hovingham**

\*The film, **Groundswell Rising**, was shown again in the **Worsley Arms** on **Tuesday March 31st at 2.30pm.**

One of the most important features of every country village is the countryside around it. Here in North Yorkshire we live in a lovely part of England. We are no more than halfway to the rest of the UK with good rail and road links as well as airports, all within driving distance.

Of much more importance to many of our new residents is the room and space in which to keep and walk a dog. During these walks we all see so much of the changes that take place in the nature of our fields and woodlands as the seasons progress. By going quietly on foot and with an obedient dog on a short lead, it is possible to get close to the heart of nature and the real countryside. You might be surprised at some of the varied wildlife you can see around our fields and woods. Just ask the locals.

At this time of year, the countryside is beginning to change as the wildlife, nature and people too start to think about their purpose in God's world. The early birds as well as the flowers and trees are starting to show buds. The snowdrops are providing masses of early flowers telling us that Spring, the most beautiful part of the year, is just around the corner.

Lambing time is well on the way in the lowlands as the grass begins to grow. Most gardeners are checking their lawn mowers and watching the bulbs breaking through giving a promise of lots of flowers to come as the season progresses. For me this will be my first year as a gardener. My wife Pat loved her garden and in the past my role was to dig to order and enjoy the fruit. I am now trying to follow the example she set throughout our married life and learn about pretty garden plants dealt with in small numbers rather yields per acre as well as talking to people rather than cows.

This is part of living in a village and even more importantly having to make all my own decisions rather than being able to say "what do you think I should do about this dear?" Life in our countryside waits for no man when Spring comes along and nature begins to grow again.

**Ken Harrison**

*Spotted in the 1965 Womans' Institute Golden Jubilee Book was a photo of a certain Mr Ken Harrison, with the caption*

*"Mr. Ken Harrison gets round the stock."*



### Hovingham Fireplaces

Worsley Arms Business Park,  
Hovingham, York, YO62 4LA  
Phone: 01653 628222

Fireplaces  
Marble & Granite surrounds  
Gas Fires, Stone Fireplaces  
Multi Fuel Stoves  
Granite Worktops

[www.hovinghamfireplaces.co.uk](http://www.hovinghamfireplaces.co.uk)



Dedicated small animal practice in modern purpose-built premises in Helmsley with branch surgeries in Pickering and Kirkbymoorside. Our friendly team of four vets, four fully qualified nurses and support staff are all committed to providing the best possible care for your pets. We are your pets' GP, surgeon, dentist and midwife.



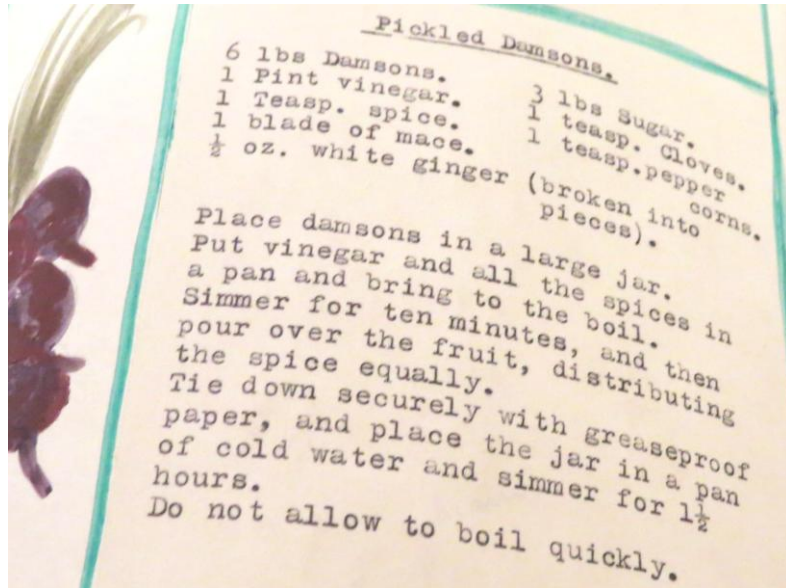
With branches at Kirkbymoorside And Pickering

[www.edgemoor-vets.co.uk](http://www.edgemoor-vets.co.uk)

Documented by the Womens' Institute in the Hovingham 1965 Golden Jubilee book, we learn that "March came in like a lion" with the heaviest snowfall of the winter, and it came as a surprise after the mixed, and at times, real Spring like weather of February, to awaken to a white world'. In contrast, March 29<sup>th</sup> produced 'almost a heat wave, with the hottest March day on record'.

Shrove Tuesday saw pancakes served in many homes with treacle or sugar and orange juice.

The big news of the day was the arrival of film stars David Niven and Sophia Loren for filming of an MGM production of 'Lady L' at Castle Howard. There were queues in Malton as locals waited for interviews and hoped to join the cast 'extras'. A previous Worsley Arms licensee, Mrs Robert Smith of Malton, acted as a stand in for Sophie Loren in one scene.



The Grand National was won by Jay Trump after an exciting finish, and' "many who wouldn't dream of having a "flutter" at any other time, will back their fancy and have a bob each way at the Grand National.'

On television, there were 'spectacular views of the first man in space, met locally with somewhat mixed feelings...quite a large percentage wonder if things are not going... just a little too far'.

Reference was also made to the shock of the death of the Princess Royal who had contributed so much to worth causes, particularly in Yorkshire.

And found within the pages was this recipe for Pickled Damsons. **Caroline Davis**

## The Hovingham Village Market

# Easter Egg Hunt.

Saturday 4<sup>th</sup> April  
10:30am - 1:30pm

[www.hovingham-market.co.uk](http://www.hovingham-market.co.uk)  
[themarket@hovingham.org.uk](mailto:themarket@hovingham.org.uk)

facebook

2015 – Market Days - Saturdays from 10:30am - 1:30pm

4 <sup>th</sup> April	1 <sup>st</sup> August	5 <sup>th</sup> December
2 <sup>nd</sup> May	5 <sup>th</sup> September	19 <sup>th</sup> December
6 <sup>th</sup> June	3 <sup>rd</sup> October	
4 <sup>th</sup> July	7 <sup>th</sup> November	

Hovingham is 20 miles North of York, between Helmsley and Malton on B1257

## Thundercliffe's

THUNDERCLIFFES THUNDEROUS FISH BOXES

to collect from Hovingham Market a months supply of fish of your choice

or we can make you a catch of the day fish box all individually packed and labelled for you to freeze no minimum or maximum amount

Tel or Text 07948 502476 tel 01439 771050

FACEBOOK TWITTER [www.thundercliffes.co.uk](http://www.thundercliffes.co.uk)

Delivery possible but it would be nice to see you there

Beef, Lamb & Pork - Free Range Eggs - Fresh Seasonal Vegetables  
Choice of Sausages, Burgers and Sweet Cured Hams  
Fresh Turkey and Chickens Available for Christmas  
Orders taken NOW

We are only 2 miles West of Hovingham

Everything we sell is grown or born & reared on our farm

THE WALL, COULTON

CORNER HOUSE FARM, COULTON, HOVINGHAM, YORK

OPEN 24 HOURS, 7 DAYS A WEEK

PHONE: 01347 888293 [www.thewall-coulton.co.uk](http://www.thewall-coulton.co.uk)



Listening to the hens in the orchard last night, I was startled to hear what seemed like a familiar tune among their clucks and twitters. After some moments of searching the revelation came:

*Oh, give me land, lots of land under starry skies above, don't fence me in.*

*Let me wander through the wide open orchard that I love, don't fence me in.*

*Let me be by myself in the evenin' breeze,  
And listen to the murmur of the apple trees,  
Send me off forever but I ask you please,  
Don't fence me in.*

I am more convinced than ever that our hens are definitely enjoying their Free Range

**Thank you to Mark and Clare Wilson for the photo**

## Hovingham Village Hall News

Following on from the major projects of the last few years; including the kitchen, entrance lobby, Gent's toilets and backstage corridor; 2014 was relatively calm.

The major change of last year came from the Bowls Club. They dismantled their pavilion. It was ageing and costly to replace. With the aid of a grant from the Open Spaces Fund (Pasture Lane), they created a new entrance from the Community Room at the back of the Village Hall with patio doors and steps out to the bowling green. At bowling events the community room serves as a club room, while the door has brought more light and has enhanced the space.

The backstage project was also completed. The final work was to box in the backstage steps and to create a small landing with a door onto the backstage area. Now when people walk along the corridor, particularly on busy market days, the stage is hidden from view and the corridor can be used as a gallery space.

The main news for this year, is that during the first week of April, as this newsletter comes out, the Hall and Community Room are being redecorated. The backstage area also needed some painting and around the new patio doors in the Community Room. The main hall gets a lot of use and the lower paintwork was looking a bit chipped. Work will commence on Saturday 28th March and is due to complete by Friday 3rd April. The work had to be done in the school holidays.

Projects under consideration for later this year are further improvements to the Ladies' toilets and external painting.

To get in touch, or for further information, contact Janice Wood, Chairman and Bookings Secretary on 01653 628952 or email [janicewood@hovingham.org.uk](mailto:janicewood@hovingham.org.uk).

**Wendy Dawson, Village Hall Secretary**



## Home too small to entertain?

There's a LOT more space at our place!

- ♦ 8x12m main hall (ideal for large parties / kids' games)
- ♦ Cosy party room (smaller parties / sanctuary for adults)
- ♦ BIG kitchen - LOTS of work surface, 5ring/2 oven cooker, large warming cabinet, large fridge, lots of crocks, etc.)
- ♦ DIY or hire a caterer (we have a list)



**Hovingham Village Hall**

Call Janice on 01653 628952 or visit [www.hovingham.org.uk](http://www.hovingham.org.uk)



## Planning a new indoor activity? Our discounts can help!

**Pilot session for regular use - up to 100% off !!!**  
**Residents or regular use - up to 25% off**

Will it work? Will it be affordable? Will the first session succeed? The only way to know for sure is **to try it and see**. Your Village Hall would like to help you. Give us a call - we can offer practical advice and even advise on publicity.

**Your Village Hall supports new activities**

Call Janice on 01653 628952 or visit [www.hovingham.org.uk](http://www.hovingham.org.uk)

**Environment and Wildlife** - contact [Ann Chapman](#) or [David Richardson](#)

- The vehicle entrance to Coronation green has been damaged and needs repairing and reseeding. If you would like to help in April you will be made very welcome.
- Anyone who would like to help clean signs, signposts etc which need cleaning, throughout the village, will also be welcomed in this once a year springtime task.

**Market** - contact [Peter Stark](#)

- Visitor numbers at recent markets have attracted increased footfall and good trading.
- Peter Stark has taken over as chairman of the market group. Many thanks go to Martin Bell for his leadership throughout his chairmanship.
- New volunteers who wish to contribute to the running of the market will be made very welcome, also any Community Group wanting to run a Community Stall should contact the Market Group.

**Playground** - contact [Ann Chapman](#), [Carol Battersby](#), [Rosemary Stewart](#) or [David Richardson](#)

- A memorial plaque to commemorate Sir Marcus Worsley is planned to be unveiled at a ceremonial event in the spring on the covered shelter.
- Contact us if you would like to be involved in various ongoing initiatives.

**Church Clock** - contact [Neil Booth](#) or [David Richardson](#)

- The maintenance of the church clock has not been without difficulties and took much longer than expected. However the clock is now running in full working order.
- The cost of the maintenance was fully financed with donations from many private individuals, the Parish Council, Market and Action Groups. Many thanks to all those involved.

**Neighbourhood Watch** - contact [Phil Chapman](#)

- Regular emails and information on criminal activity from the police continue to be sent out. Villagers should be vigilant and report any suspicious activity to the police.

**David Richardson**

## The FootMan

Chiropody ~ Podiatry

Alan Cawthorne. BSc (Hons) HCPC Registered.  
<http://alancawthorne.wix.com/thefootman>

**Services offered:**

- Nail care and Callus (hard skin) reduction
- Biomechanical assessments
- Custom, hand-made orthotics / insoles
- Diabetic and vascular foot checks
- Verrucae treatment and corn removal
- Fungal nail and Athlete's foot treatments



If you would like to book an appointment or discuss whether treatment would be suitable for you, please contact me.

**Home Visits Available**

Covering Helmsley and all surrounding areas.

Every Friday at Bondgate Clinic  
 16 Bondgate, Helmsley, York, YO62 5BR

**Tel: 01439 771196**



*Simple, innovative and caring funeral services*

Giving you space and time to choose

*Your wishes matter to us*



*Last Wishes*

*Christine Dudzinska*

01653 627170 | 07824 639 244

[www.lastwishesfunerals.co.uk](http://www.lastwishesfunerals.co.uk)

As part of the School150 celebration in 2014, the School and the Playground Group asked the children to design 6 panels to feature in the new Hovingham Playground Tunnels. I hope you agree that the resulting panels are vibrant, energising and totally terrific. The Playground will be unveiling this artwork and the memorial plaque in memory of Sir Marcus Worsley in June. More in the next Newsletter.

The School150 logo and the signatures of all the children



The season, Spring, Summer, Autumn and Winter



The Elements - Earth, Fire, Air and Water



**GENERAL - Hovingham & Scackleton**

- **Election Elections** - There will be District and Parish Council Elections on Thursday May 7<sup>th</sup>.
- **Grass Cutting** – Contracts for 2015-16 agreed with current contractors, including NY Garden Services for the Bakery Green, at same rates as this year.
- **Gritting** - NYCC are reducing coverage for filling of grit bins and roadside piles. Scackleton and Hovingham Action Groups will prioritise existing bins and grit piles and determine amount of grit required for next winter, by the July Parish Council Meeting.
- **Police - Community Speed Watch** - There was disappointment that the Ryedale Area was not consulted or selected for this trial. Our interest has been registered. Community Speed Watch enables volunteers to record speed of vehicles and drivers of offending vehicles contacted.
- **Police – New Sergeant** - An invitation from the Parish Council to the new Police Sergeant will be made by the new Parish Council elected in May 2015.

**SCACKLETON**

- Concern expressed about condition of verges and road servicing road repairs in Scackleton Lane; NYCC Highways to be contacted.
- **Mobile Phone Mast** - Proposed site now in Hovingham with Scackleton Ward, planning application expected to RDC in April. The mast will not be visible from the road.

**NORTH YORKSHIRE COUNTY COUNCIL  
from Councillor Clare Wood**

- NYCC are one of best performing County Councils.
- Richard Marr will be consulted regarding conduct of their contractors in Scackleton.
- Savings of £75.4m required as government grant is dwindling. Vital services will be protected.
- During the winter hospitals, social care and CCG have performed well delivering a proper integrated service
- In reply to a question from Councillor Mrs M Bell; NYCC Planning Committee will address any Fracking planning application when it is submitted and any application will be put under intense scrutiny. The application in Lancashire is 1 year further forward and the development of that proposal will be followed closely. An application from Third Energy is expected before the end of the month. (Possibly 17<sup>th</sup> Mar.). It will be a long process with many aspects to be taken in to account. The RDC debate in the Milton Rooms had been very useful but there are still questions to be answered. No convincing case has yet been made for fracking.

**HOVINGHAM**

- **Action Group** - David Richardson was thanked for all work that he and the Action Group do for the village.
- **Cemetery Maintenance** - Cemetery Wall repairs in progress. Some damage from rabbits reported.
- **Church Clock** - Maintenance and repair was not straight forward however, now appears on-time.
- **Flower Tub** - This has now been purchased and will now be planted by Richard Wood.
- **Highways** - Work has been completed by NYCC to fill the pot hole opposite the Worsley Arms Hotel.
- **Noticeboard** - Replacement board will not be locked.
- **Pasture Lane Footpath** - This is nearly complete. Fence and shrubs need to be planted and footpath extended to reach public footpath. NYCC to be reminded that the public footpath needs attention.
- **Playground** - Plaque in memory of Sir Marcus Worsley will be unveiled in June.
- **Village Website** - Currently being updated

**FINANCE**

- An invoice was received from RDC for dog waste Scackleton was approx £90 more than estimate; payment was approved and prior approval will in future before payment.
- War Stock of £190.95 has been redeemed.
- NYCC grass cutting grant is zero for year 2015-16
- A balanced budget was proposed for 2015-16 and was approved.
- The Parish Clerk has waived her allowance for 2014-15 for which the Council thanked her. The Terrington Clerk received £675pa.
- For 2015-16 NYCC have increased Council Tax by 2%, RDC by 0% and Parish Council decreased by 2.1%.

**RYEDALE DISTRICT COUNCIL****from Councillor Robert Wainwright (Hovingham)**

- RDC are one of best performing District Councils.
- Government Grant was better than expected so there will be no increase in the Council Tax.
- There will be a meeting about Sheriff Hutton Solar Farm on Wednesday 25<sup>th</sup> March 5:30pm to 8pm.
- In reply to question from Councillor Mrs M Bell; he explained he was personally against fracking and voted on advice that the proposed motion was unlawful.

**from Councillor Jim Bailey (Scackleton)**

- Explained his position regarding fracking both as RDC Councillor and Chairman NYMoors NP (National Park)
- Both bodies would be consultees and to date the government have not banned fracking in the NP.
- The process will present many challenges for the NP.

**FUTURE PARISH COUNCIL MEETINGS** - all start at 7pm13<sup>th</sup> May - Post Election & AGM Hovingham8<sup>th</sup> July - Scackleton Church9<sup>th</sup> Sept. & 11<sup>th</sup> Nov. - Hovingham

## April 2015

3 <sup>rd</sup> Fri	<b>Good Friday Service - 10:30am</b> Hovingham Church
4 <sup>th</sup> Sat	<b>Hovingham Village Market - 10:30am to 1:30pm</b> - Hovingham Village Hall - Please come along and support the Market; Hovingham Cricket Club will run the Community Café. <b>Special Easter Egg Hunt - from 10:30am</b> The Hovingham Market Village Market FREE Entry for children
5 <sup>th</sup> Sun	<b>United Easter Service - 10:30am</b> Hovingham Church
6 <sup>th</sup> Mon	Landfill Waste Collection - <b>Green Bin</b> - <b>Supermobile Library in Hovingham</b> - 5pm until 7pm - Location Hall Green
7 <sup>th</sup> Tue	<b>Scrumptious Fish &amp; Chip Van - 5:35pm</b> Hall Green, opposite Village Hall <b>Hovingham Women's Fellowship - 7pm</b> Home of Maureen Lucas - Speaker Rev. Mike Smith
11 <sup>th</sup> Mon	<b>The BIG Tidy Up</b> - Litter Picking with Coffee and Cake to follow Meet outside Worsley Arms Hotel at 10am. More details <a href="mailto:action@hovingham.orq.uk">action@hovingham.orq.uk</a>
12 <sup>th</sup> Sun	<b>Eucharist Service - 10:30am</b> Hovingham Church <b>Methodist Service - 10:30am</b> Hovingham Chapel, M. Sellers
13 <sup>th</sup> Mon	Recycling Collection - <b>Recycling and COMPOST Bins</b> <b>Tone UP Exercises - 11:15am</b> Hovingham Village Hall with Katie Mae Ellis
14 <sup>th</sup> Tue	<b>Scrumptious Fish &amp; Chip Van - 5:35pm</b> Hall Green, opposite Village Hall
19 <sup>th</sup> Sun	<b>Morning Praise - 10:30am</b> Hovingham Church <b>Methodist Service - 10:30am</b> Hovingham Chapel, N. Webster
20 <sup>th</sup> Mon	Landfill Waste Collection - <b>Green Bin</b> <b>Supermobile Library in Hovingham</b> - 5pm until 7pm - Location Hall Green
21 <sup>st</sup> Tue	<b>Scrumptious Fish &amp; Chip Van - 5:35pm</b> Hall Green, opposite Village Hall
26 <sup>th</sup> Sun	<b>Hovingham Benefice Service - 10:30am</b> Hovingham Church <b>Methodist Service - 10:30am</b> Hovingham Chapel, N. Smith
27 <sup>th</sup> Mon	Recycling Collection - <b>Recycling and COMPOST Bins</b>
28 <sup>th</sup> Tue	<b>Scrumptious Fish &amp; Chip Van - 5:35pm</b> Hall Green, opposite Village Hall

## May 2015

1 <sup>st</sup> Fri	<b>Tour de Yorkshire Cycle Race Day 1 - Bridlington to Scarborough via Pickering</b>
2 <sup>nd</sup> Sat	<b>Hovingham Village Market - 10:30am to 1:30pm</b> - Hovingham Village Hall - Please and support the Market; Hovingham Playground will run the Community Café. <b>Tour de Yorkshire Cycle Race Day 2 Selby via NORTON (13:30) to York (from 14:30)</b>
3 <sup>rd</sup> Sun	<b>Hovingham Matins Service - 10:30am</b> Hovingham Church <b>Methodist Service - 10:30am</b> Hovingham Chapel, M. Smith <b>Tour de Yorkshire Cycle Race Day 3 - Wakefield to Leeds</b>
4 <sup>th</sup> Mon	Recycling Collection - <b>Recycling and COMPOST Bins</b>
5 <sup>th</sup> Tue	<b>Scrumptious Fish &amp; Chip Van - 5:35pm</b> Hall Green, opposite Village Hall <b>Hovingham Women's Fellowship - 7pm</b> Home of Sue Fitton Speaker will be Rev. Ben Nicholson of Helmsley
7 <sup>th</sup> Thu	<b>National, District and Parish Council Elections</b> - Polling Stations open 7am to 10pm
10 <sup>th</sup> Sun	<b>Eucharist Service - 10:30am</b> Hovingham Church <b>Methodist Service - 10:30am</b> Hovingham Chapel, R. King <b>Scackleton Evening Prayer Service - 6pm</b> St Georges Scackleton
11 <sup>th</sup> Mon	Landfill Waste Collection - <b>Green Bin</b> <b>Supermobile Library in Hovingham</b> - 5pm until 7pm - Location Hall Green
12 <sup>th</sup> Tue	<b>Scrumptious Fish &amp; Chip Van - 5:35pm</b> Hall Green, opposite Village Hall
17 <sup>th</sup> Sun	<b>Morning Praise Service - 10:30am</b> Hovingham Church <b>Methodist Service - 10:30am</b> Hovingham Chapel, to be confirmed
18 <sup>th</sup> Mon	Recycling Collection - <b>Recycling and COMPOST Bins</b>
19 <sup>th</sup> Tue	<b>Scrumptious Fish &amp; Chip Van - 5:35pm</b> Hall Green, opposite Village Hall
24 <sup>th</sup> Sun	<b>Service - 10:30am</b> Hovingham Church <b>Methodist Service - 10:30am</b> Hovingham Chapel, L. Stannard
25 <sup>th</sup> Mon	<b>Bank Holiday - Car Boot Sale</b>
26 <sup>th</sup> Tue	Landfill Waste Collection - <b>Green Bin</b> <b>Scrumptious Fish &amp; Chip Van - 5:35pm</b> Hall Green, opposite Village Hall