



The Hovingham and Scackleton Newsletter



December 2012

Welcome to the Hovingham and Scackleton Newsletter

Welcome to the December 2012 issue. We hope you will find the contents interesting and informative. As always we are grateful to our many contributors. Please keep up the flow of submissions (to newsletter@hovingham.org.uk) – the deadline for the February issue is 15th January 2013.

The editors of this issue, Jill Knight and Martin Bell, join the rest of the Newsletter Group, Eddie Lucas, Margaret Bell and Ann Chapman, in wishing all our readers Merry Christmas and a Happy New Year.



Newsletter NOW available in COLOUR for friends and family, anywhere around the world

Download from our website www.hovingham.org.uk or subscribe by email to newsletter@hovingham.org.uk

DIY Flood Protection

When the telephone rings before 7.00 o'clock in the morning, it is always worrying. And when it is a recorded message from the Environment Agency to tell you that you are about to be flooded, you spring to life in an instant. And when you look out of the window and all you can see is water where the road should have been, your heart sinks. Thankfully, the water hadn't yet entered the ground floor, but it was lapping at the gate in front of the house. When you have already been flooded once, albeit twelve years previously, you do all you can to try and keep the water out. You are up and dressed in a flash and are putting sandbags in front of your front door outside and lifting furniture up indoors. However, once again, we along the Beckside, can be grateful for the fact twelve years ago we had clubbed together to construct an overflow channel to divert much of the excess water, and not for the first time it saved us from almost certain flooding.

It is reassuring to record that so many people in the village, as can be seen from the photograph, whether their houses were liable to be flooded or not, rushed to our assistance to bring sandbags and put them in place. A good example of village cooperation!

Eddie Lucas.



Contact: newsletter@hovingham.org.uk or (01653)-628364

Published and © 2011 by The Hovingham & Scackleton Newsletter Group. Views are not necessarily those of Group or Parish Council

After finishing my article in the August newsletter saying fingers crossed for some dry weather - it didn't happen! The rain continued into August (3 inches), September (4 inches) and October (4 inches). We got a dry week in September when most of the wheat got cut, but by then the weather had done its damage, and the quality and yields were poor. The situation wasn't helped because the ground was now so wet that the combine harvesters were getting stuck and some areas of field had to be left due to standing water. In some cases if you were growing beans, harvest didn't finish until early November, the latest in living memory. The potato harvest is still on going with a struggle with field conditions so wet that it is taking an almighty effort to get them out of the ground.



Photo: Phil Chapman

All this puts an enormous strain on the machinery and tests the resolve of the people trying to do the work. We do get used to machinery breaking down but this is even more frustrating when the weather has been so bad.

All this has had a knock-on effect when trying to sow next year's crop. Some areas are still standing in water so can't be drilled, and where drilling has been possible the rain has caused flooding and rotted the seed. Where the fields have been severely damaged, it is going to take quite a while to get the soil structure returned to normal.

All this has caused the commodity prices to increase; but when yields are down by as much as they have been, this does take the gloss off it. There has been quite a bit in the press about how much the prices will increase in the shops and the impact this will have. One Sunday morning, when I was pumping water out of my grain dryer (again) and mending broken down machinery (again), I wished that the general public could see this to appreciate the effort it takes to put food on the shelves.

Mark Wilson

Pasture Lane Social Housing available soon

If any local residents are interested in the new affordable homes (both for rent and affordable sale) which form part of the development at The Pastures in Hovingham, please contact Christine Norman at Broadacres on 0800 5875291 or 01609 767900

There was an open day on Thursday November 22nd at the Village Hall which provided some details. The properties for rent are not due to be handed over until March. The rent is in the region of £80.00 a week for a 2 bedroom flat. The affordable homes (for sale) will not be built until the end of next year.

Rainfall at Hall Farm, Hovingham (in mm)

	Jan	Feb	Mar	Apr	May	Jun	Jul	Aug	Sep	Oct	Nov	Dec	Total
2010	83	58	47	21	11	37	42	42	82	64	74	31	592
2011	43	68	6	2	41	52	48	112	25	67	28	66	558
2012	49	16	20	148	48	102	110	76	113	97			
Avg	60	48	38	45	46	58	50	62	53	68	63	58	619

Note: 10,166mm equals 400.24 inches or 33 feet 4.24 inches

AVG figures calculated from 1994 to 2011

Reproduced with the permission of Robert Wainwright

Thank you Hovingham for record support - again!

from the British Legion, Help for Heroes and the Gurkhas

Yet again, Hovingham has excelled itself in its support for our injured Armed Services personnel and their families. Sir Marcus's talk on his time as Lord Lieutenant of North Yorkshire raised £205 for the Gurkha Welfare Trust - a record for this type of talk. The annual Remembrance Day Lunch raised £140 for Help for Heroes - another record. Hovingham Branch of the Royal British Legion is adding further donations to the RBL.

Residents gave £1,350 to the Poppy Appeal. With donations to all charities falling nationally by 20%, this is an increase of 20% - on top of last year's increase of 45%! Poppy Collection organiser Rosemary Stewart says "A big Thank You to all our collectors and donors. To see yet another increase in support at a time of economic difficulty is marvellous".

Elizabeth Thompson, past secretary of Hovingham Branch of the Royal British Legion, has been awarded a special Poppy Appeal brooch to mark her 15 years as a collector.



Rob Thompson

The Queen's Man in North Yorkshire

This event raises £205 for Hovingham's Support of the Gurkha Welfare Trust

A packed Community Room at the village hall on October 30th heard a very informative and entertaining talk by Sir Marcus Worsley on his 11 years as Lord Lieutenant of North Yorkshire. The size of the audience, the large number of interesting questions and the extended social over a glass of wine demonstrated the public support for the Gurkhas and showed how well the evening was received.

£205 after costs was raised to boost the fund set up by Hovingham Branch of the Royal British Legion in support of the Gurkha Welfare Trust which cares for the 8,500 Gurkha soldiers remaining from WW2, and their widows, but for whom there is no army pension - or any other means of support. Many of these Gurkhas, many in their 90s, have to walk (or be carried) for up to two days to collect their pensions. The Hovingham fund was set up in 2001 and provided for two pensions when they were each £240 annually but these have now risen to £492 each while the number of our local donors has diminished. The money raised will top up the amount from regular donors and ensure Hovingham can contribute at least one pension for the next two years. The appeal was especially poignant as Lt Edward Drummond-Baxter and L/Cpl Siddhanta Kunwar, both of 1st Battalion the Royal Gurkha Rifles were killed in action on the day of the talk.

Our Chairman, Richard Orange-Bromehead would welcome new donors to the Hovingham Gurkha Fund. ***Rob Thompson***



Gentle Exercise Group take to the oars

On Saturday 10th November, and for the second time, a stalwart and very athletic team of ladies from Hovingham Gentle Exercise Group encouraged by their instructor, Andy Gamble, entered in Ampleforth's Rowathon.

We had great fun participating with many other teams to raise funds for Ampleforth College's charity fundraising for Hope and Homes for Children. All teams completed the 10km Team Challenge, some a bit quicker than ourselves, but it was good to take part.

Those in our team included

Di Davies, Lesley Geale, Sue Goodwill, Rosemary Stewart, Enid Sumner and her granddaughter Jessica, and friends Max, Jack, Sally and Victoria.

Sue Goodwill



4 Talk on wartime Hovingham

a look back at Hovingham

The impact on the village of a large number of war-time evacuees and the army camp

A presentation on life in the village from 1939

Written and narrated by David Sumner

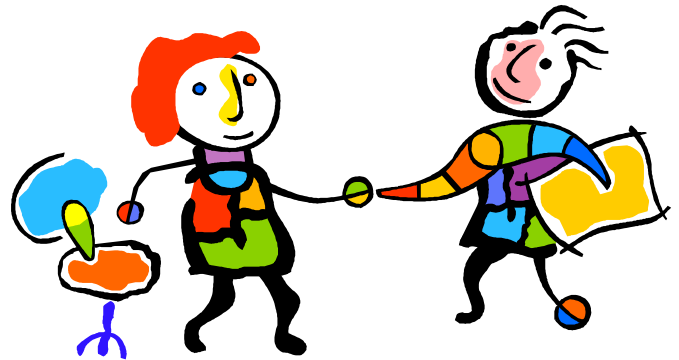
*Village Hall
Committee Room
16 January 2013
2.30 & 7.00pm*

*Admission free. Voluntary collection in aid of
Dr Barnado's.*

DVD copies will be made available to order

Christmas Bring, Share & Enjoy

The Hovingham Action Group are again organising another Bring, Share and Enjoy



6pm Monday 10th December

Hovingham Village Hall

Bring along food and drink, share it with others and enjoy the get together and conversation.

Always a popular event, just turn up on the night, everyone is welcome.

Hovingham Village Hall - AGM

The Annual Meeting of the Village Hall Management Committee will be held in the Community Room at 7.30pm on Thursday 10 January 2013. The full agenda will be published on the village noticeboard, but it will include the election of officers (Chair, Vice-Chair, Treasurer, Secretary, Bookings Secretary), a financial report for 2012 and determination of hire charges for 2013.

Anyone who wishes to attend may do so and may speak, though the Committee has decided that voting rights should be reserved to members of the Committee. Any organisation in the village that wishes to do so may nominate members to the Committee: organisations that are currently not represented are invited to do so to the Secretary (Martin Knight t: 628977 e: metna@enterprise.net) before Thursday 3 January.

Martin Knight

GCSE Science Tutoring

25 years secondary teaching experience

Current CRB

Reasonable Rates

Paul Gatenby (01845)-597047



*Exciting New Hair Studio –
offering you a superior salon
experience in an informal and
relaxing atmosphere.*

*Park Street, Hovingham
Tel 01653 628968*

www.naturalbalances.co.uk

Natural Balances
Foot & Healthcare

Professional care for healthy, pain-free feet!

Foot Health Treatments Biomechanical Gait Analysis

Wider fit shoe measuring, ordering & fitting service

Tel: 01751 430806 Email: info@naturalbalances.co.uk

Hovingham Fireplaces (01653) 628222

Worsley Arms Business Park,
Hovingham YO62 4LA

Fireplaces

Marble or Granite Surrounds

Gas Fires, Stone Fireplaces

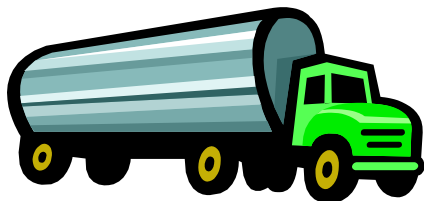
Electric Fires

Multi Fuel Stoves

Kitchen granite worktops

www.hovinghamfireplaces.co.uk





Since February 2011 residents have been saving 5p a litre for fuel ordered through the very successful Oswaldkirk scheme.

If you would like to join the scheme then either send your details to fuel@hovingham.org.uk or phone (01653)-627171.

Snow Clearing in Hovingham

Snow clearing in Hovingham over the past two winters has been carried out by an enthusiastic group of village volunteers and has helped to keep the village functioning. Arrangements are in place to repeat the 'exercise' when any substantial snowfall arrives.

The volunteers have found if snow is removed from the paths and roads regularly it is much easier to keep on top of things. If snow is left and compacted, then freezes, it proves much more difficult and time consuming to move.

If anyone is willing to help, please get in touch with any of the names at the foot of this article. Whatever time could be given would be appreciated.

It would also make the job much easier if residents could clear outside their own properties. Likewise where other, possibly older residents, are unable to clear the snow fronting their properties it would be a benefit if they could be given assistance. Just to clarify, there is no law preventing the clearing of snow and ice on pavements and pathways. Anyone doing so, provided they are careful and use common sense, would be unlikely to face legal liability.



FREE GRIT FOR HOVINGHAM RESIDENTS

The Hovingham Action Group as part of their Community Winter Maintenance Programme can offer all residents of Hovingham salt grit, **free of charge**, (subject to availability). Salt/grit helps prevent ice forming on paths and further snow lying. This would certainly be of help where steps and gradients may be a safety issue.

The grit can be collected in suitable containers (i.e. plastic buckets) by contacting

David Richardson (628227) Mark Wilson (628235) Murray Stewart (628741)

If any resident is unable to collect, due to disability etc., please contact us and a delivery can be made in exceptional circumstances.

The snow clearing project is funded by the Hovingham Action Group.

FAMILY HISTORY RESEARCH

We show you how or do it for you

www.mintwood.co.uk

JANICE WOOD
Mintwood Services
5 Blue Row, High Street
Hovingham
YORK. YO62 4LA

Phone: 01653 628952

Mobile: 07813 977613

email: research@mintwood.co.uk



The WORSLEY ARMS Hotel

An exquisite, timeless country house setting with open log fires and stylish furnishings. All bedrooms have private bath, telephone, TV and room service. Four-poster suite for special occasions. Main Street Hovingham, York. Tel 01653 628234 www.worsleyarms.co.uk

abbEpics

www.abbepics.com

5 High Street
Hovingham
YORK, YO62 4LA
01653 628952
07786001059



Nostalgia isn't what it used to be!
Photos, slides & documents scanned & transferred to CD or DVD
Recover those lost memories on VHS tape too!

Richard Holloway Local Chimney Sweep

A local sweep, covering your area, I pride myself on doing a thorough job whilst keeping everything clean and tidy.

Friendly service with a smile!

Contact: Richard Holloway, 01751 432024
Please leave a message for a fast reply.



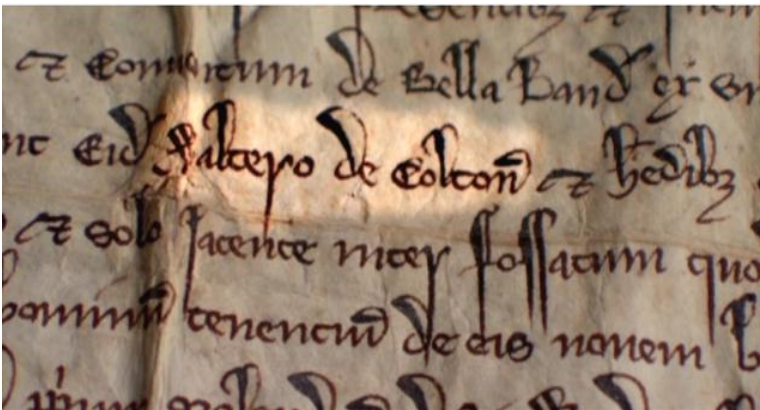
Just over three years ago my wife and I had recently returned to Yorkshire after living in Banda Aceh and Kathmandu. North Yorkshire was quite a change in some respects but our love of the rural countryside and desire to rear livestock in a place of outstanding natural beauty had been an aim of ours for a long time. When we first saw Coulton Mill it seemed like a dream and very quickly we were told that it was sold and was to be converted into several separate houses. We had wanted to preserve the Mill and byres to house livestock and remain the small farmstead it had been for hundreds of years but it seemed that, like so much of our built agricultural history, it was to be lost for housing development.

To our delight though the sale fell through and we managed to purchase the house, byres and ten acres of land. Many people had had the same idea as us but the amount of work was daunting. The house had been empty for over two years and largely unmodernised since the 1960's.

Although our previous home had required total refurbishment this was a very different challenge. I had to take a job in Afghanistan's Helmand Province to cover our expenses and Heather was left to face the everyday reality of the restoration with our three year old daughter, Sibylla. To make matters worse when we were applying for our mortgage the house was broken into and the copper pipes stolen. This meant it was no longer regarded as habitable and called for considerable expense before we even owned it in order to get the mortgage approved. It was tough and a little over two years ago we got the keys to an extraordinary survivor covering at least eight hundred years of local history.



First sight - Real estate advertisement 2009 © zoopla



700 year old Byland Abbey title deeds found in the North Yorkshire Archives © BBC 2012

A long process of detective work lay ahead but our first step was to contact the Yorkshire Vernacular Buildings Trust to help us to record the buildings. They had been contacted by Endemol TV to suggest suitable houses for a new series of 'Restoration Home' to be shown on BBC 2. Realising the historical importance of the mill and with our own passion to preserve the rural environment we accepted and filming began in 2011. Although the mill itself was very much the focus of the programme our priority was to make the house livable – not easy when you are already living there!

The months that followed saw regular visits from the film crew, who based themselves at the Worsley Arms in Hovingham. We felt quite pressured to be seen to get results but it was very good to see how they adapted their filming to reflect our views of the mill as part of the wider landscape and environment, and its importance as part of the local community.

We knew that there were records of the Mill dating back as far as 1230, when the Mill was mentioned in a document from Byland Abbey as being fully functioning. It even detailed what percentage of grain, or 'grist' the Miller was allowed to keep as his expenses.



The mill wheel – old but still in place – just!

There were some hilarious times, such as when Sibylla very straight faced told presenter Caroline Quentin that in Yorkshire children eat dog food, then picked up a dog biscuit and said with a big grin, "I'm Yorkshire". This little gem, along with so much else didn't make the final cut.

Two days before the final filming we had no paint on the walls, no carpets and no door. We frantically worked to get two rooms done and when the programme was shown on 22 August this year we were pleased to be able to look back on a hard but rewarding year.



Things have got even busier since then. An Environmental Stewardship grant from Natural England has enabled us to start an extensive programme of repair to the farm buildings. We are absolutely committed to using local craftsmen and materials to replicate the building crafts of two hundred years ago. We already keep Oxford Sandy and Black pigs, Hebridean sheep and many breeds of poultry, including the rare *Yorkshire Pheasant*. Soon we will see another major milestone when we start our herd of *Northern Dairy Shorthorn* cattle. The breed are native to North Yorkshire and were once numerous here but now largely extinct, except for a fibreglass model in the Herriot Museum in Thirsk!

The mill were be open for National Mills weekend, 12-13 May 2013, when we hope to have a new Mill wheel in place.

Heather and Nick Burrows.



Hovingham Estate www.hovingham.co.uk

Residential property - The Estate has residential property to rent, ranging from 2 bedrooms to 5 bedrooms, all situated within the village. **Contact:** The Estate Office on 01653 628771

Logs for sale - The Estate sell logs in varying load sizes which can be delivered within 1 mile of Hovingham Village. **Contact:** David Blades on 01653 628357

Please note due to harvest logs cannot be delivered during the months of August and September.

Holiday Cottage – Spa Cottage; sleeps 6. For booking contact Rural Retreats at www.ruralretreats.co.uk or telephone 01386 701177



Home too small to entertain?

There's a LOT more space at our place!

- ♦ 8x12m main hall (ideal for large parties / kids' games)
- ♦ Cosy party room (smaller parties / sanctuary for adults)
- ♦ BIG kitchen - LOTS of work surface, 5ring/2 oven cooker, large warming cabinet, large fridge, lots of crocks, etc.)
- ♦ DIY or hire a caterer (we have a list)

Hovingham Village Hall

Call Janice on 01653 628952 or visit www.hovingham.org.uk



The Hovingham Action Group won the Ryedale Rural Community Group award for 2012, the second year running. The Market Group were also successful, winning "Yorkshire Farmers Market of the Year" from Yorkshire Life and again nominated for the Rural Oscars.

Snow Clearing

The team are currently preparing for winter; anyone interested in joining the team should contact David Richardson.

Christmas Bring Share and Enjoy

To be held on Monday 10th December, at 6pm in the Community Room, Everyone is very welcome.

Christmas tree

The Market Group have agreed to provide a grant to purchase tree and new lights, a resident has kindly agreed to purchase additional lights for the tree. It will be erected and decorated ready for the Market on 1st December.

Community Plan

A review of the 2009 Community Plan is in progress and feedback from residents will be obtained before proposal of revised action plan is made.

Market

-The calendar for 2013 Community Cafés has been finalised and the total reached by Community Cafés and Stalls now exceeds £27,000.

-The Market's 3rd birthday was celebrated at the October Market, together with the award of "Yorkshire Farmers Market of the Year" by Yorkshire Life.

-The Market have donated the lovely round tree seat on Top Green, and are pleased to have seen it getting good use. The Wildlife group have planted native Snowdrops beneath it.

Wildlife Areas

Native bluebells (Cemetery Path) and native Snowdrops (Top Green) and Crocus (Coronation Green memorial) were planted on 10th November by the team. Look out for their colour in springtime.

Litter Bins

Four new bins are built, awaiting weather to remove old bins and install new ones. Source for a new metal liner for the fourth has still to be found.

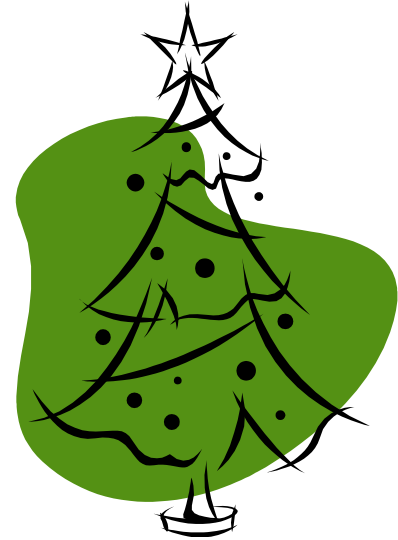
Playground

Volunteers have been recruited to ensure the Playground is regularly inspected, providing a safe environment for children, parents, grand-parents and great grand-parents to enjoy. A rota is in place for weekly inspections.

Safety and Security

Following a recent burglary, residents are being reminded of the basic precautions to take and contacting the Police if they see anything suspicious. Use 999 for emergency calls, otherwise use 101 to contact the Police.

Phil Chapman



Hedgehog News

The baby hedgehog we found in our garden in August was looked after successfully by the Hedgehog Hospital in Driffield. As well as medical treatment (he was very sick) he was given a diet of peanuts. He arrived at the optimum weight of 600g from 150g and duly went into hibernation in October. He will stay in the refuge until spring and will then be homed in a friend's organic garden together with a female companion. We hope romance will blossom or something and will let you know! It is rare surely to have such a close record of a single hedgehog from very early days (near death) to full adulthood. The owner of the garden is delighted as he has big problems with slugs and snails. He will watch over his hedgehogs and let us know their progress.

Jill Knight





We are now nearly a month into our interregnum, but Church life has continued. For this we have to thank our Rural Dean Peter Bowes; our retired clergyman, John Warden; visiting lay preachers such as Michael Stallybrass from Old Malton; our own lay minister emeritus, Tim Rowe and the many lay people and friends of All Saints' Hovingham who continue to serve the church faithfully. For example, we were grateful to Revd Quentin Wilson who conducted a very moving and well supported Remembrance Sunday Service. We are also grateful for the cooperation we enjoy with our Methodist friends in the village. And thanks to the enthusiasm of a loyal band of men and women, the regular Thursday morning School Assembly in the church is set to continue.

We are grateful to all those who are ensuring the continued proclamation of the Gospel in Hovingham. However, with the interregnum set to last many months, and even a year or more, it is clear that this enthusiasm will have to be maintained for some time to come.

Eddie Lucas

See the Diary for Church Services dates and times

This is the ancient Saxon Cross behind the altar, 1000 years old and still counting!!



The Hovingham Village Market

Yorkshire Rural Oscar Winner – 2012
Yorkshire Farmers Market of the Year-2012



Next Markets 1st Dec & 15th Dec
35+ STALLS & Community Café
 Hovingham Village Hall from 10:30am

SHOP LOCAL & SUPPORT LOCAL

www.hovingham-market.org.uk themarket@hovingham.org.uk

Thundercliffe's Fruits from the Sea

Quality Fishmongers of Scarborough
 Yorkshire fish and shellfish direct from the coast
See us every month at the Hovingham Village Market and now in Helmsley



Please ring if you want me to call or for Special Orders

Peter Thundercliffe 01723 500552 & 07948 502476



Beef, Lamb & Pork - Free Range Eggs - Fresh Seasonal Vegetables
 Choice of Sausages, Burgers and Sweet Cured Hams
 Fresh Turkey and Chickens Available for Christmas
 Orders taken NOW

We are only 2 miles West of Hovingham

Everything we sell is grown or born & reared on our farm



THE WALL, COULTON
CORNER HOUSE FARM, COULTON, HOVINGHAM, YORK
OPEN 24 HOURS, 7 DAYS A WEEK
PHONE: 01347 888293 www.thewall-coulton.co.uk

Elaine & Chris Sayles

HOVINGHAM BAKERY



Brookside
 Hovingham
 York
 YO62 4LG

Phone: 01653 628898

Email: hovinghambakery@aol.com

The Parish Council met on the 14th November in Hovingham Village Hall with 6 councillors and 3 residents present.

Waste bins are to be supplied to the church in Scackleton, and will be installed in Hovingham following removal of the concrete bases of the old bins.

New Homes Bonus 2013/2014. The deadline for applications for this Government Grant for each new home built in Ryedale is 22nd February 2013.

Pasture Lane Development Public Open Space Commuted Fund. The builders will make two payments of £21,750 to RDC for 'enhancing and providing youth and adult leisure facilities or the enhancement of sport and leisure facilities within Hovingham Electoral Ward.' The Housing Association properties are under construction and will be available first to residents, then those who work in Hovingham, then those with a connection to the village.

Scackleton Report and Action Group Report. The problem with the pond overflow has been resolved. A tree preservation order is being considered. Restoration of the Pin Fold is under way.

PC Finance Update. Re the precept 2013/2014: there had been no increase last year and as costs are increasing a 5% increase was agreed.

Village seats will be stored over the winter.

Cemetery Wall. It was agreed that £500, to include materials, be set aside for work to be done by Mr D. Lumley before the end of March, weather permitting.

Flood/ Emergency Plan. Following a meeting with the Environment Agency, Hovingham Estate agreed to mow the sides of the overflow channel and the Environment Agency will provide a gauge board at the ford, and will advise on the problem of the flow under Pasture House bridge. Mr J. Anderson is to be a deputy flood warden.

Hovingham Playground. There is now a pool of volunteers to carry out weekly inspections as required under the insurance policy. A maintenance contract, to cover all the equipment, is to be sought from the supplier of the equipment to ensure the playground is safe enough to remain open.

Report from District Councillor R. Wainwright.

- The Local Development Plan should be ready before Christmas and, once approved, sites would be found for homes and businesses in Malton and Norton, including 30 homes in Slingsby.
- Proposals are being progressed to make the way alongside the treatment plant to the old railway line a permissive footpath.

Date for the next meeting: January 9th 2013

Refuse Collections over Christmas

Ryedale Street Scene has confirmed the following refuse collections over the Christmas period. You will be receiving (or have received) tags on your bins detailing these collections and they are included in the Village Diary

Hovingham; Normal Monday collections are unaffected.

Green bin – Household waste Monday 17th and 31st December, and 7th January

Dry recycling – Paper, glass, plastic, metal etc Monday 24th December, 7th January

Brown Bin – garden waste - Monday 10th December, 7th January, 4th February


Scackleton; Normal day is Tuesday and these collections are effected.

Green bin – Household waste Tuesday 18th and Wednesday 2nd January

Dry recycling – Paper, glass, plastic, metal etc Thursday 27th December and Tuesday 8th January

Brown Bin – garden waste - 11th December, 8th January, 5th February

ANY EXTRA PLASTIC BOTTLES, CANS, GLASS, FLATTENED CARDBOARD AND PAPER WILL BE COLLECTED IF LEFT OUT IN BAGS, WEEK COMMENCING 24/12/2012 ONLY.

Ryedale District Council - STREETSCENE			
Round 8	NORMAL DATES	DAY CHANGES	
 REFUSE	M 17/12/12		NO CHANGE
	Tu 18/12/12		
	W 19/12/12		
	Th 20/12/12		
 DRY RECYCLING	M 24/12/12		NO CHANGE
	Tu 25/12/12	Th 27/12/12	
	W 26/12/12	F 28/12/12	
	Th 27/12/12	Sat 29/12/12	
 REFUSE	M 31/12/12		NO CHANGE
	Tu 01/01/13	W 02/01/13	
	W 02/01/13	Th 03/01/13	
	Th 03/01/13	F 04/01/13	
 DRY RECYCLING	M 07/01/13		NO CHANGE
	Tu 08/01/13		
	W 09/01/13		
	Th 10/01/13		

ANY EXTRA PLASTIC BOTTLES, CANS, GLASS, FLATTENED CARDBOARD AND PAPER WILL BE COLLECTED IF LEFT OUT IN BAGS, WEEK COMMENCING 24/12/2012 ONLY.

THERE ARE NO INTERRUPTIONS TO THE ALTERNATE WEEK COLLECTION PATTERNS AT CHRISTMAS OR NEW YEAR.

PLEASE TURN OVER FOR IMPORTANT CHANGES TO YOUR GARDEN WASTE COLLECTION DATES DURING DEC, JAN AND FEB.

Churches	All Saints C of E, Hovingham			
	Methodist Chapel, Hovingham			
	St Aidan's RC, Oswaldkirk	Dom Edgar Miller	(01439)	766416
	St George's, Scackleton			
Councils	County Councillor	Clare Wood	(01904)	489362
	District Councillor	Robert Wainwright	(01653)	628364
	Parish Council – Parish Clerk	Sue Wainwright	(01653)	628364
	Member of Parliament	Anne McIntosh	(01845)	523835
	North Yorkshire County Council	County Hall, Northallerton	(0845)	872 7374
	Ryedale District Council	Ryedale House, Malton	(01653)	600666
Doctors	Ampleforth Surgery		(01439)	788215
	Hovingham Surgery		(01653)	628203
	Malton Surgery		(01653)	600069
Emergency Services	Community Police	PC Andy Grant. PCSO Nicki Pounder	101	
	EMERGENCY CALLS - 999			
	NHS Direct		(0845)	46 47
Schools	Hovingham C of E School	Maureen Skinner – Head	(01653)	628358
	Ryedale School	Mr R Crane – Head	(01439)	771665
Transport	Bus Service	Stephensons of Easingwold	(01347)	838990
	Community Transport	Red Cross – Gill Morrow	(01653)	696188
		Ryecat	(01653)	699059
	Taxis	Helmsley – Jeb Taxis	(01439)	770536
		Malton – Ryedale Taxis	(01653)	600030
	Trains		(08457)	484950

Clubs and Recreation

Bowls	Malcolm Hutton	(01653) 628493
British Legion	Rob Thompson	(01653) 628640
Cricket	Paul Deverell	(07760) 178728
Iyenga Yoga	Shirin Marshal	(01751) 432956
Junior Cricket	Stuart Prest	(07720) 941090
Ryedale Family History	Janice Wood	(01653) 628952
Tennis	Trudy Visser	(01653) 628599
Village Hall Bookings	Janice Wood	(01653) 628952
Women's Fellowship	Sue Goodwill	(01347) 888613
Young Farmer's	Bruce Wilson	(01653) 628567

Local Businesses

Beck Cottage – Holiday Let	Pop Day & Robert Richardson	(01653) 628607
Chimney Sweep	Richard Holloway	(01751) 432024
Edgemoor Vet	George Skinner	(01439) 771166
Electrical Contractors	Alec Quarton	(01653) 628730
Family History Research	Janice Wood	(01653) 628952
Fishmonger	Peter Thundercliffe	(01723) 500552
Foot & Health Care	Alison Holloway	(01751) 430806
Home Cottage – Holiday Let	R & B Williams	(01287) 630491
Hovingham Bakery & Spa Tearooms	Elaine & Chris	(01653) 628898
Hovingham Estate	Rupert Drury	(01653) 628771
Hovingham Fireplaces	Malcolm Hutton	(01653) 628222
Hovingham Stores	Margaret Goodwill	(01653) 628934
Little Lamb Wool Co.	Sally Goodwill	(01653) 628896
Malt Shovel Inn	Steve	(01653) 628264
Mintwood Gardening Service	Richard Wood	(01653) 628952
Park Salon	Alison Wilson	(01653) 628968
Plumbers & Heating Engineers	Bob Mowbray	(01653) 628647
	Oliver Quarton	(07824) 663448
The Wall, Coulton	Peter Stark	(01347) 888293
Worsley Arms Hotel	Tony Finn	(01653) 628234

For further details please visit

www.hovingham.org.uk

If you would like to add details, or you know of details that need changing,

then please contact

newsletter@hovingham.org.uk



Dedicated small animal practice in modern purpose-built premises in Helmsley with branch surgeries in Pickering and Kirkbymoorside. Our friendly team of four vets, four fully qualified nurses and support staff are all committed to providing the best possible care for your pets. We are your pets' GP, surgeon, dentist and midwife.

Helmsley YO62 5BZ
(01439) 771166



With branches at
Kirkbymoorside
And Pickering

Need help with your Computer?

Internet, hardware, software, upgrades, repairs, tuition, or simply an introduction to your PC... sorted in your own home.



Martin Underwood 01653 619293
07748 632563

Underwood Computer Services

December 2012

1 st Sat	Hovingham Village Market 10:30am to 1:30pm - Hovingham Village Hall Please come along and support the Market; Hot Mulled Wine will be available Hovingham Action Group who will be running the Community Café	
2 nd Sun	BCP Matins – 10:30am All Saints' Hovingham Methodist United Service – 10:30am Slingsby Chapel , by Revd M. Smith	
3 rd Mon	Landfill Waste Collection – Green Bin Supermobile Library in Hovingham 5pm until 7pm - Location Hall Green	
4 th Tue	Hovingham Women's Fellowship – 2pm Home of Sue Goodwill - Christmas Party Lions Sleigh in Hovingham – approx 5:30pm Please support this worthy cause, this year again sponsored by the Market Group	
5 th Wed	Gentle Exercise Group – 2:30pm to 3:30pm Hovingham Village Hall Worsley Arms Supper Club – Christmas Theme 6pm Worsley Arms Hotel Reservations required, please contact Hotel	
9 th Sun	BCP Eucharist Service – 10:30am All Saints' Hovingham Methodist Service – 10:30am Hovingham Chapel – Margot Taylor Benefice Iona Service – 4pm Slingsby Church	
10 th Mon	Recycling Collection – Recycling and Brown Compost Bin Bring, Share & Enjoy Event – 6pm Hovingham Village Hall All very welcome	
15 th Sat	Hovingham Village Market 10:30am to 1:30pm - Hovingham Village Hall Please come along and support the Market; Hot Mulled Wine will be available Friends of the Hovingham School who will be running the Community Café	
16 th Sun	Morning Praise – 10:30am All Saints' Hovingham Scackleton Carol Service – 3pm St George's Church Scackleton Service with be followed by Mulled Wine or Sherry and Mince Pies United Street Parishes Carol Service – 6pm Slingsby Village Hall	
17 th Mon	Landfill Waste Collection – Green Bin Supermobile Library in Hovingham 5pm until 7pm - Location Hall Green	
19 th Wed	Worsley Arms Quiz – 7pm Worsley Arms Hotel Grab your knowledgeable friends and family for the Quiz Night.	
23 rd Sun	Benefice Eucharist Service with Carols – 10:30am All Saints' Hovingham Methodist Carol Service – 6pm Hovingham Chapel	
24 th Mon	Recycling Collection – Recycling Bins (Thursday 27th in Scackleton) Christingle Service – 4pm All Saints' Hovingham Anticipated Midnight Mass – 9pm Slingsby Church	
25 th Tue	Christmas Family Service with Eucharist 10:30am All Saints' Hovingham	
30 th Sun	United Eucharist Service – 9:30am St Michael's Church Malton Methodist Service – 10:30am Hovingham Chapel – Holy Communion – Rev Mike Smith	
31 st Mon	Landfill Waste Collection – Green Bin (Wednesday 2nd in Scackleton)	

January 2013

6 th Sun	Methodist Service – 10:30am Hovingham Chapel – Noel Smith	
7 th Mon	Recycling Collection – Recycling Bins & Brown Compost Bin	
9 th Wed	Worsley Arms Supper Club – Scottish Theme - 6pm Worsley Arms Hotel Reservations required, please contact Hotel.	
13 th Sun	Methodist United Covenant Service – 10:30am Slingsby Chapel Holy Communion – Rev Mike Smith	
14 th Mon	Landfill Waste Collection – Green Bin Supermobile Library in Hovingham 5pm until 7pm - Location Hall Green	
16 th Wed	Worsley Arms Quiz – 7pm Worsley Arms Hotel Grab your knowledgeable friends and family for the Quiz Night.	
20 th Sun	Morning Praise – 10:30am All Saints' Hovingham Service for Christian Unity in Southern Ryedale – 10:45am St. Peters Norton	
21 st Mon	Recycling Collection – Recycling Bins	
23 rd Wed	Hovingham Market AGM – 7pm Community Room – Everyone very welcome	
27 th Sun	Methodist Service – 10:30am Hovingham Chapel – Rev. Mike Smith	
28 th Mon	Landfill Waste Collection – Green Bin Supermobile Library in Hovingham 5pm until 7pm - Location Hall Green	