

The Hovingham and Scackleton Newsletter

April 2013

Welcome to the Hovingham and Scackleton Newsletter

A happy Easter to all - and roll on spring and summer. This time last year was sunny and warm. But as we go to press the snowdrops are hanging in there, the daffodils are sulking, much else is stunned by frost and the ground is sullen, grey and wet. Poor farmers. Nevertheless, Spring is too magical to be snookered by inclement weather. We hope the good news in this issue cheers you up, and that the future events advertised here put a spring in your step. On April 7th it will be 450 years since Hovingham Estate was born- so let us thank the children of Hovingham School for (despite the weather!) describing so nicely what we can celebrate in Hovingham four centuries on. Thanks again to all our contributors, without whom there would be no newsletter.

Margaret Bell and Eddie Lucas

Contributions for the June issue are welcome. Please send them to newsletter@hovingham.org.uk by 15th May 2013

We regret to say that Jill Knight feels unable to continue on the Editorial Committee of the Newsletter. We are grateful to Jill for all the work she has put in. In the meantime, is there anyone in the village or surrounding area who would be able to join us and to help produce further issues of the Newsletter?

Newsletter NOW available in COLOUR for friends and family, anywhere around the world

Download from our website www.hovingham.org.uk or subscribe by email to newsletter@hovingham.org.uk

Café H - Hovingham School Entrepreneurs

The Village Hall was buzzing over lunchtime on Thursday 21st March, when the young entrepreneurs of Class 2 at Hovingham School opened Café H to the public. This was the grand finale to a term's work on the theme of "café".

Throughout the term the children had: researched how different cafés in Malton were run, visited Thomas the Bakers in Helmsley to see how a bakery functions and linked up with Welburn Hall School to use their superb food technology facilities to make the bread and soup that was for sale. In addition they had produced all of the publicity for the event, drawn up job descriptions and applied and been interviewed for the various roles on the day. All of the savoury food on sale had been prepared by the children and parents very generously donated cakes to be sold as well. Work in all areas of the curriculum was linked to the theme. As we went to press the children were busy calculating their profit and deciding how to spend it. The venture was extremely well supported by parents and members of the wider village community and the atmosphere at the café was wonderful.

Maureen Skinner

Hovingham School ran another very successful café with rows of smartly turned out children to welcome and wait on us. So much work went into this venture, including some very fine artwork seen around the village on posters as well as flyers through our letterboxes. And an excellent original art display showed David Hockney style montages of children's faces and a 'Famous Faces' board, with children's drawings mirroring half a photographed celebrity face.

And there was not a spare seat in the café by 12.45, a full house no less. The attention to detail was evident with table clothes, menus and flowers on the tables and a selection of tempting homemade delicacies for our delight. I imagine there were some tired children (and parents) eager to put their feet up following the event.

We must thank the school and parents for treating us to an insight into these young lives and as for the innovative art and concepts now on the curriculum – we didn't do any of that when I was a girl!!

Ann Chapman



Contact: newsletter@hovingham.org.uk or (01653)-628364

Published and © 2013 by The Hovingham & Scackleton Newsletter Group. Views are not necessarily those of Group or Parish Council

May Car Boot Sale

Monday 27th May

(Bank Holiday Monday)

Car Boots, Tombola, refreshments
On the Village Green, Hovingham

Run by Hovingham Social
Committee.

Tel Karen Rutter - 01653 628830



Hovingham Police Office



The Mobile Police Bus will be visiting Hovingham Hall Green between 17:00 and 18:00 on:

- Monday 22nd April
- Friday 10th May
- Monday 17th June

Marie Curie – Lantern Magic Show 10th April

Lantern Magic

a Victorian Magic Lantern Show

&

Pie & Peas Supper

Hovingham Village Hall

Wednesday 10th April, at 7pm

in aid of Marie Curie Cancer Care

Tickets are £10 per person and are available from Janice Wood.

01653 628952 and from Richard Wood's stall on Hovingham Market



The magic lantern was the predecessor of the slide projector. This show uses an original brass and mahogany magic lantern (with modern lighting to meet health and safety requirements) and glass slides up to 170 years old! The slides are beautiful, humorous, colourful and some are animated. The show is interesting, enjoyable and surprising! This is a show of two parts. Pie and peas supper will be served in the interval.

Library Services

Volunteers needed. To help keep our libraries open, local libraries are looking for volunteers to help issue books, stack shelves and assist visitors. If you can spare several hours a month please contact your local library and offer your assistance.

In particular **Helmsley** library would appreciate help: Telephone: 0845 034 9527 Email: helmsley.library@northyorks.gov.uk

Ebooks: No you don't have to buy them! North Yorkshire Libraries now allow the downloading of E-Books onto your PC, Laptop, or other device. (Amazon does not allow libraries to purchase or download books via Kindle) You will need to be a member of the Library, install some free software and follow some instructions. You can download up to 10 books at a time and these will be automatically returned in 3 weeks. So don't buy them, try from your library first!

See full details here: <http://www.northyorks.gov.uk/index.aspx?articleid=13459>

Ann Chapman

Doctor Peter Ticehurst to retire in April

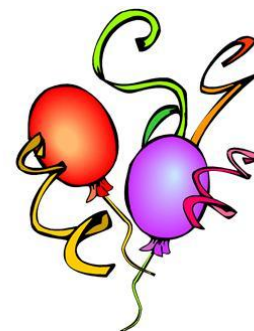
Dr Peter Ticehurst is retiring this April. We are saying "Goodbye and thank you **Ampleforth Village Hall on Saturday 27th April with A drop-in Tea from 5 to 7 pm**
Followed by a **Ceilidh from 7.15 to 10 pm with the Tiefrung Gleemen Band**

Everyone who has been associated with the Ampleforth and Hovingham practice is welcome. The **Ceilidh** will be free but numbers will be restricted to a maximum of 120 people. If you would like to join us then please ask for tickets at the Surgeries in Ampleforth and Hovingham. The remaining tickets will be available at the door on the night on a first come, first served basis.

If you are able, please bring a contribution towards food for the tea or the evening. It would help if you could indicate what you are able to bring to Jenny Moreton (01439 788436 or jenny.moreton@btinternet.com)

Tea, coffee and soft drinks will be provided but you are welcome to bring a bottle for your group or to share.

There will be folders in both surgeries for you to add your comments/ reminiscences/ good wishes for Dr Ticehurst.





Hovingham Bowls Club is holding an Open Day at 1.30pm on Sunday 21 April 2013 to encourage anyone who is interested in bowling to come along and give it a try. Bowls will be available for people to use as well as experienced bowlers to give help and advice as necessary. The Club plays in 2 Leagues and there is plenty of opportunity for everyone to have at least one game per week, but quite apart from that we are a friendly bunch and win lose or draw we do enjoy and play the game in the spirit it should be played.

WHY NOT COME ALONG AND GIVE IT A GO - WE WOULD BE DELIGHTED TO SEE YOU.

Malcolm Hutton

Contact (Ian Battersby (01653 628388) and Malcolm Hutton (01653 628222 Work) and 628493 Home)

Hovingham Tennis Club

Spring is on the way and, in case you have not noticed, the tennis court behind the village hall has been resurfaced and repainted.

New members welcome

We are always looking for new members and we have two mixed teams which play in different leagues every Monday evening from the 27th May to the 5th August.

We play our home matches at Terrington Prep School, as they have three courts, and the competition comes from surrounding towns and villages. They are very social occasions and great fun whether you win or lose!

If you have any family or friends visiting and they fancy a game of tennis, we now have free tennis racquets and balls available at the Worsley Arms.

Anyone wishing to join the club should contact Trudy Visser on 01653 628599 or myself on 01653 628741.

Murray Stewart. Chairman.

Anyone for Tennis?

Hovingham Tennis Court (behind the village hall) is available for hire with FREE tennis racquets and balls.

Opening Hours 7a.m. to 6p.m. Monday - Friday
7a.m. to 2p.m. Saturday. (Closed Sunday.)

Tennis racquets and balls available from the Worsley Arms on the main street.

A booking sheet is available at the court.

Cost is £5 for two hours payable at Hovingham Village Shop. Please pay the hotel if the shop is closed.



Your serve?



Home too small to entertain?

There's a LOT more space at our place!

- ◆ 8x12m main hall (ideal for large parties / kids' games)
- ◆ Cosy party room (smaller parties / sanctuary for adults)
- ◆ BIG kitchen - LOTS of work surface, 5ring/2 oven cooker, large warming cabinet, large fridge, lots of crocks, etc.)
- ◆ DIY or hire a caterer (we have a list)



Hovingham Village Hall

Call Janice on 01653 628952 or visit www.hovingham.org.uk

Hovingham Estate www.hovingham.co.uk

Residential property - The Estate has residential property to rent, ranging from 2 bedrooms to 5 bedrooms, all situated within the village. **Contact:** The Estate Office on 01653 628771

Logs for sale - The Estate sell logs in varying load sizes which can be delivered within 1 mile of Hovingham Village. **Contact:** David Blades on 01653 628357

Please note due to harvest logs cannot be delivered during the months of August and September.

Holiday Cottage - Spa Cottage; is an attractive 3 bedroom, 2 bathroom cottage that sleeps 6 in comfort. For bookings please contact Rural Retreats at www.ruralretreats.co.uk or telephone 01386 701177

It is very difficult to write anything which differs from what I did at the beginning of November as it has done nothing but rain since. We have had about 14.5 inches since then so it is getting very sickening to look at flooded fields every day.

The land did dry up a couple of weeks ago to the extent that all the standing water disappeared for a while. It was surprising how much the fields dried with breeze, even if it was a cold one. This brief spell gave the opportunity to go over the crops with some fertiliser. I put some Nitrogen on (with a bit of Sulphur) to try and encourage the plants to wake up and grow. Once I had done this I went over again with some Phosphate and Potash to replenish the nutrients that the previous crop had used. Potash levels get particularly depleted when straw is baled and taken off the fields. Having done that and feeling better for actually being on a tractor and doing some proper work, I waited for the warm spring weather to come! This was wishful thinking as it has been very cold and the fields have as much water in them as at any time during the winter.

So what happens now? Just wait and see what happens is the answer! It must dry up and get warmer at some point. The crops have been under so much stress all winter, and still are, that it is going to take some time for them to recover. This would be the time of year when spring crops are starting to be sown and although some spring barley has been drilled on some farms, anymore drilling will have to wait quite a while. I have some spring beans to sow but I cannot even get into the fields to plough them.

I know that sometimes all we seem to do is moan about the weather but it really does have such a big effect on food production. The weather pattern does appear to bring extremes now so maybe we will head into a drought soon!

Mark Wilson



Rainfall at Hall Farm, Hovingham (in mm)

	Jan	Feb	Mar	Apr	May	Jun	Jul	Aug	Sep	Oct	Nov	Dec	Total
2010	83	58	47	21	11	37	42	42	82	64	74	31	592
2011	43	68	6	2	41	52	48	112	25	67	28	66	558
2012	49	16	20	148	48	102	110	76	113	97	137	122	1038
2013	57	24											
Avg	60	48	38	45	46	58	50	62	53	68	63	58	619

2 drier months - but still water lies in the fields preventing ploughing and planting.

AVG figures calculated from 1994 to 2011

Reproduced with the permission of Robert Wainwright

In 2008, Key Stage 2 children at Hovingham Primary School based a substantial part of their work on the theme ‘Our Village’, which contributed to the Community Plan (2009). Following on from that, and triggered by the recent Community Plan Review (2013), the current Key Stage 2 children have worked on a questionnaire asking them what they like and dislike about the village and their ideas for improvement.

Twenty nine children, aged 7 – 11, responded to the new questionnaire. Although only 6 actually live in Hovingham, 22 said they came here at other times to visit friends (17), play at the playground (19) to visit the shops (20) and to walk (10).

Here is what they said:

- **Shops:** They would like to see more shops in Hovingham, a large number wanting a sports shop (14) and a toy shop (11)!
- **Facilities:** They were asked if there should be better facilities in the village. 11 thought squash facilities, others though rugby (9); athletics (10) and badminton (6).
- **Road Safety:** As far as road safety is concerned 10 thought the roads are too dangerous to cross but 12 thought a crossing would help and 7 thought a lower speed limit would make the roads safer. They also thought there was a benefit in having street lighting.
- **Play Equipment:** The play equipment at the playground was well liked (17) but there was no shortage of ideas for adding to the range including a better zip wire, bigger slide, running track, roundabout, swings, climbing wall, climbing frame, more for older children and a skateboard park.
- **Sign posts:** They were asked if any local facilities needed signposting. The bakery topped the list.

And they said ‘Hovingham is a lovely place to live’; ‘It has good sports facilities’; People are very friendly’; ‘Very little litter’; ‘We need a post office and a petrol station’; ‘I like Hovingham’.

Older siblings were asked for their views too: ‘Hovingham is a nice, friendly and has some fab facilities’; ‘The school is lovely and very pretty’.

Interestingly, the results are similar to what the children said 5 years ago, which was: we like “The shop, because you can buy all sorts of things there”; we don’t like “the speeding traffic, because it is noisy and dangerous”; we would like “the playground re- opened, so we can have somewhere to go together”.

Isn’t it good that it is – and they can now play football there, as well?

Parents added their thoughts and ideas: ‘We think Hovingham is a very nice village, unspoilt, but it will need to grow a bit each year to sustain the facilities’; ‘The shop is excellent and it is good to have a hairdressers’; ‘The fast traffic worries me’; ‘Great community spirit’; ‘There are good facilities for a village of this size’; ‘Mobile phone reception could be better and a regular bus into York’; ‘We like the dark skies at night’; ‘We were sad to lose the deli’; ‘The market is a real asset’.

It is good to see how the school continues to encourage its children to play an active role in village life and to think creatively about how they may help to shape the future of Hovingham. Thank you.



Stephen Croft and Margaret Bell

Hovingham Fireplaces (01653) 628222
 Worsley Arms Business Park,
 Hovingham YO62 4LA

Fireplaces
 Marble or Granite Surrounds
 Gas Fires, Stone Fireplaces
 Electric Fires
 Multi Fuel Stoves
 Kitchen granite worktops

www.hovinghamfireplaces.co.uk

Beef, Lamb & Pork – Free Range Eggs – Fresh Seasonal Vegetables
 Choice of Sausages, Burgers and Sweet Cured Hams
 Fresh Turkey and Chickens Available for Christmas
 Orders taken NOW

We are only 2 miles West of Hovingham

Everything we sell is grown or
 born & reared on our farm

THE WALL, COULTON
 CORNER HOUSE FARM, COULTON, HOVINGHAM, YORK
 OPEN 24 HOURS, 7 DAYS A WEEK
 PHONE: 01347 888293 www.thewall-coulton.co.uk

Fancy a lovely outing - well try taking the 10.35 am bus from outside Hovingham School and visit Helmsley. The trip takes you over Nunnington Bank, through Harome and on into Helmsley in about 20 -25 minutes. The scenery is spectacular, much better than you see from a car and Ian, the bus driver, is full of smiles and very helpful. Helmsley of course has many eateries, shops, a fine church, and of course the Walled Garden and Castle. (Helmsley Market is on a Friday) Return home and hour later on the 12.10 bus from the Square or a later bus if you have more to do.

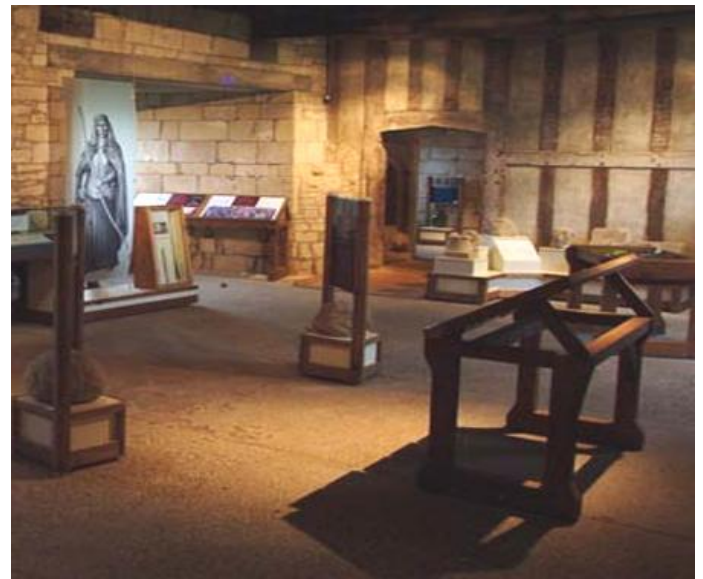
Ann Chapman

Hovingham & Scackleton Bus Services (Routes 194 via Nunnington & 195 via Ampleforth) - Monday to Saturday

From	Hovingham	0935	1035	1135	1235	1335	1435	1655
	Via	Amp	Nun	Amp	Nun	Amp	Nun	Nun
To	Helmsley	1015	1100	1215	1300	1420	1500	1720

From	Helmsley	0905	1010	1050	1210	1250	1410	1635
	Via	Nun	Nun	Amp	Nun	Amp	Nun	Nun
To	Hovingham	0935	1035	1135	1235	1335	1435	1700

Remember to use the buses – use them or lose them



Why we need to pick up and carefully throw away Dog Poo

Dog faeces are not only unpleasant but can be a real health hazard. Several bacteria can be transmitted from dog faeces to humans including campylobacter and E. Coli. and these can cause nasty infections in people. However the major health concern for humans is the risk of Toxocara roundworm infection. Dog faeces from infected dogs can contain toxocara eggs and these eggs can remain in the environment for years. If these eggs (invisible to the naked eye) are accidentally ingested (often by small children) then serious illness including blindness can occur. Picking up dog faeces is vital to control this infection, along with regular and effective worming.

Elly Russell, MA, Vet MB, MRCVS. Edgemoor Vets.



Hovingham with Scackleton Parish Council

Dog Fouling

It is every dog owner's legal and moral duty and responsibility to clean up after their dog.

If your dog fouls in a public place, please clean it up.

Please Note:

We have the power to prosecute under the Dogs – Fouling of Land – Act 1996.

This Act allows for a fixed penalty fine of £50. In certain circumstances offenders can be taken to court where the maximum fine is £1,000 and a criminal record.



Easter Sunday Worship. Methodists and Anglicans join together on Easter Sunday morning at 10.30am for Easter Eucharist. All will be welcomed.

Christian Aid Week. This from 12th to 18th May. Please donate generously towards those living in areas of the world where there is great poverty and starvation. Gift Aiding your donation greatly increases your giving. Volunteers to distribute and/or collect envelopes would be appreciated. Contact Maureen Lucas (628352).

Edwin Lucas



CHURCH NEWS

If you visit a church in a city on a weekday, the chances are that you will find it locked. Even many rural churches are locked between Sunday services. There are good reasons for this and our insurers would be happier if all churches were locked. In this secular age, thefts from churches are a regular occurrence. Not only are there precious and valuable items in churches, but often money which has been donated can be accessed.

So why is Hovingham Church left open during the hours of daylight? There are, I think several good reasons for doing so. In the first place Hovingham Church, like many others is a beautiful building which many people want to admire. Then, so many people over the years have been Christened or married here and then moved away, that they wish to return and remind themselves of these events. But perhaps the most important reason is that at a time of distress, people want somewhere peaceful to pray or just meditate, and churches provide the best possible atmosphere for this.

So, we lock away all the really valuable items and leave the church there for those who wish to visit or use it, and take the risk of less valuable items being stolen. We may have difficulty stopping thieves from stealing the lead from the church roof, but really valuable items can be stored away. So Hovingham Church remains open every day, and we are grateful to Maggie and Martin Potter who open it in the morning and to Hazel Brown who locks it up at night.

Edwin Lucas

CHAPEL NEWS

As residents have no doubt observed, work has now started on the re-roofing of Hovingham Chapel. This being a listed building, negotiations has been taking place for some considerable time. What is not generally known is its interesting history. This takes us back to the year 1767 when the dissenters first requested permission for a place of worship in Hovingham. I quote:-

“We who names are Hereunto subscribed being Proteftant Difsenters, do intend to make use of the house of Samuel Freeze in the town and parifh of Hovingham in the County and Diocefs of York, for a place of Publick worfhip of Almighty God, as witnefs our hands this 7th day of June 1767.”

Ancient deeds of 1815 refer to land”upon which a Chapel or Meeting House hath been lately erectedfor the people called Methodists.....in order that they preach and expound God's Holy Word and preach no other doctrines than are contained in the Rev. John Wesley's notes.....New Testament and his first four Volumes of Sermons”

Not until 1911 was the Chapel solemnised for weddings.

It is intended that phase one will cover re-roofing, pointing and heating, with the hope that phase two will cover modest kitchen facilities and toilet for the disabled.

Let us hope that our little Chapel will be able to continue extending its welcome to all, to the glory of God for many generations to come.

Carol Battersby

The market on March 2nd enjoyed excellent weather. Thanks to all stall holders and our volunteers we had a very good market with a good number of shoppers and visitors. A lot of favourable comments were posted afterwards on Twitter and Facebook. Thanks to Eric Cowham for helping greet visitors, something he intends to continue doing at subsequent markets.

Speaking of volunteers, we REALLY need one or two extra helpers to turn out from 7 am to 9 am on market days to assist getting the stalls ready. Just a couple of hours, first Saturday of the month. And it need not be every market day! **Please** get in touch if you can help.



The next market will be on 6th April. The majority of our regular traders will be there as well as recent additions such as Etruscany (Italian deli), Puckett's Pickles (chutneys) and Rose Cottage Pantry (pies). Mary Pacitto (jewellery) and Manor Farm Beef are unable to come to the April market but will be back in May. We will have a couple of guest stalls for April – Amelia's Chocolates and Raisethorpe Manor (gin and vodka based liqueurs) – so we will have a full market of 33 stalls, the same number as in March. The community stall will be a tombola run by students from Ryedale School to raise money towards a school trip to Borneo. The café will be run by Hovingham Playground group.

Do come and support the Market, and if you are able to volunteer some help, please let us know.
Martin Bell.

themarket@hovingham.org.uk 01653 628494

Pasture Lane Open Space Fund - Applications

Five local community groups submitted applications, totalling £41,842.97, for this fund of £43,500.00. These applications will be forwarded to Gary Housden, Chief Planning Officer at Ryedale District Council.

Summary

Bowls Club	£7,769.62
Cricket Club	£12,287.00
Playground Group	£13,150.00
Tennis Club	£3,925.35
Village Hall	£4,711.00
TOTAL	£41,842.97

Bowls Club

New "French Window" for the Community Room
Demolish existing pavilion
Erect gate and fence
Shed for equipment



£7,769.62

Cricket Club

Gang mower for outfield
Self-propelled cylinder mower for square
Second hand roller
Shed for equipment
Two sightscreens
Pavilion materials/scoreboard
New boundary ropes
Junior Kwik cricket equipment
Two benches for spectators



£12,287.00

Playground Group

Willow tunnels and wigwams
Scatterlog
Basketball hoop
Climbing frame
Add tunnels to existing castle
Shelter
Two picnic tables



£13,150.00

Tennis Club

Replace the tennis court fencing, gates and curbs
New tennis net
Two oak wooden benches
Four junior tennis racquets



£3,925.35

Village Hall

One hundred folding upholstered chairs
Four storage trolleys for chairs
Storage area above corridor by stage



£4,711.00

GCSE Science Tutoring

25 years secondary teaching experience

Current CRB

Reasonable Rates

Paul Gatenby (01845)-597047

The WORSLEY ARMS Hotel

An exquisite, timeless country house setting with open log fires and stylish furnishings.
All bedrooms have private bath, telephone, TV and room service.
Four-poster suite for special occasions.
Main Street Hovingham, York. Tel 01653 628234
www.worsleyarms.co.uk

Five Parish Councillors and two electors were present, together with Clare Wood our North Yorkshire County Councillor.

Pasture Lane Development: A successful open evening regarding the affordable apartments and homes has taken place.

Open Spaces Applications: Five applications totalling £41,842.97 have been received and passed onto Gary Housden at RDC. The first payment of £21,750 due 1st March has not yet been received. Further details on the applications are included elsewhere in this Newsletter.

Waste Bins: Two further bins have been installed and next two should be in by Easter. A request for anyone able to source compatible metal bin liners has been made.

Flood Gauge: This has been installed, by the Environment Agency, on the far bank of the beck opposite Beck Cottage.

Speeding: It is recommended that 30mph speed markings on road at entry points to village would be most effective and best to consider work when weather is warmer. An HGV restriction at Coulton Mill would have limited effect due to required "Except for Access" qualification, which often applies to local farmers.



Finance:

- £500 has been approved to re-point Cemetery Wall
- A small surplus is forecast for this year, to 31st March
- Expenditure for rail painting (£300) and cemetery wall repairs (£500) has been deferred to 2013-14
- A draft budget for 2013-14 has been drawn up, a deficit of £1,000 is forecast. The cost of grass cutting will depend on weather and number of cuts.

Scackleton Report and Action Group Report:

- Residents are very happy with road repairs
- Requested a log seat in the pin-fold has been made to AONB
- The village seat has returned following winter maintenance

Hovingham Action Group Report:

- Feedback on the Community Plan review is being requested
- The Environment Group are planning sign cleaning, litter pick-up and path maintenance this year
- The Market, Playground, Wildlife and Snow Clearing Groups are proceeding well
- Anyone interested in helping with any of these groups, please contact the Action Group.

Other Business:

- David Sumner spoke regarding his concerns, and those of other residents who share his views, that village organisations are becoming too reliant on grants. A copy of his letter and reply from the Parish Council will be forwarded to Gary Housden at RDC.
- A visit is being organised to the Quarry
- Next Parish Council Meeting, and AGM, will be held on 8th May at 7pm in the Community Room

Report by Clare Wood,

North Yorkshire County Councillor:

- Road repair work on the B1257 has now started with:
 - night-time closures at Barton-le-Street
 - traffic lights w/c 18th March from Amotherby to Malton
 - traffic lights w/c 25th March from Hovingham to Slingsby
- Part of the road in Scackleton has now been repaired
Extra money has been made available for road repairs in North Yorkshire however; this is a fraction of the amount required.
- Villages who already have installed speed matrix signs will not have to pay charges.
- NYCC grant towards grass cutting will be decreased by just over £200.
- There are concerns over the NY Timber Freight Quality Partnership proposals; including frequent use of Part Street and any use of the road via Coulton Mill near Scackleton. These concerns have been formally made to NYCC.

Report by Robert Wainwright,

Ryedale District Councillor

- Comments on the Local Development Framework will be heard by the Inspector on 22nd May. Preferred development sites would be identified by the end of 2014.
- Julia Mulligan, the Police Commissioner, reported to the NYCC Local Area Committee that she has the cooperation of Hull/Humberside and the West Riding areas. She believes that the Ryedale Police CAP Group was an example of best practice and she held no fixed views on CCTV.
- The Community Safety Budget has been cut by 35% and would be cut altogether the following year.
- Terrington is looking at producing a Parish Plan.
- A statement will be made on the plans of two groups for the Malton Livestock Market will be made on 19th March.
- Nothing to report on the Wentworth Street car park at the moment; Holbeck Land will be submitting another application to the Planning Committee.

Electroville, support organisations who provide services to voluntary organisations in Yorkshire and Humber, are running a series of low cost (£12.50 + booking fee) courses

Get the most from...Your Website: Leeds - 24th April, Whitby - 1st May

Get the most from...Your Technology: Transform your organisation: Leeds - 14th May

Get the most from...Your Social Media: Use social media effectively. Harrogate - 8th May

For details of events contact www.electroville.org.uk or Ryedale Voluntary Action,

Ryedale Community House, Wentworth Street, Malton.YO17 7BN. Tel: 01653 600120



Keeping Warm and well

Warmer Together: keeping warm and well this winter

Do you know someone who may need help to keep warm this winter? Help is available via the 'Warmer Together' project, led by North Yorkshire County Council and partners, funded by the Department of Health 'Warm Homes healthy People' fund 2012/13. Just under £150,000 was awarded, the funding being targeted at people on low income who are at risk of fuel poverty and associated ill health. This includes elderly people, people with long-term health conditions, disabled or frail people, those in low quality housing with damp or black mould, people with young children, and homeless people.

The help available includes:

Practical support: a 'keep warm' pack (hat, scarf, gloves, blanket etc), basic draught-proofing, a boiler service, small home repairs, or an emergency heater if the primary source of heating fails, delivered by Home Improvement Agencies. There is a simple referral process.

'Hotspots' referral scheme: a simple referral mechanism to help those who are most at risk during the winter. The scheme includes a short and simple e-learning pack, posters, flyers and referral cards. Agencies can refer customers for help with free insulation, energy advice, benefit checks and fire safety checks. People can also self-refer. Call Yorkshire Energy Partnership on 01904 545020.

Outreach activities: to provide information and support to vulnerable people during the winter months, for example coffee mornings and lunch clubs. These will be advertised locally.

Winter weather village agent schemes: support to develop volunteer schemes in rural areas, to help vulnerable people isolated by bad weather. Call Rural Action Yorkshire on 0845 313 0270.

As funding is limited, it will be allocated on a 'first come, first served' basis and there are basic eligibility criteria. For more information and for referral forms, please go to the North Yorkshire County Council website <http://www.northyorks.gov.uk/keepingwarm>, or contact the White Rose Home Improvement Agency on 01723 232527



Dedicated small animal practice in modern purpose-built premises in Helmsley with branch surgeries in Pickering and Kirkbymoorside. Our friendly team of four vets, four fully qualified nurses and support staff are all committed to providing the best possible care for your pets. We are your pets' GP, surgeon, dentist and midwife.

Helmsley YO62 5BZ
(01439) 771166



With branches at
Kirkbymoorside
And Pickering



*Exciting New Hair Studio –
offering you a superior salon
experience in an informal and
relaxing atmosphere.*

Park Street, Hovingham
Tel 01653 628968

Need help with your Computer?

Internet, hardware, software, upgrades, repairs, tuition, or simply an introduction to your PC... sorted in your own home.

Martin Underwood 01653 619293
07748 632563

Underwood Computer Services



Appliance Care

JOHN WILLIAMSON

Tel: 01347 878190

Repairs to Washing Machines, Dryers

Electric Cookers and Refrigeration

Prompt & friendly. ALL MAKES CONSIDERED

Volunteers needed. To help keep our libraries open, local libraries are looking for volunteers to help issue books, stack shelves and assist visitors. If you can spare several hours a month please contact your local library and offer your assistance. In particular **Helmsley** library would appreciate help: Telephone: 0845 034 9527 Email: helmsley.library@northyorks.gov.uk

Ebooks: No you don't have to buy them! North Yorkshire Libraries now allow the downloading of E-Books onto your PC, Laptop, or other device. (Amazon does not allow libraries to purchase or download books via Kindle) You will need to be a member of the Library, install some free software and follow some instructions. You can download up to 10 books at a time and these will be automatically returned in 3 weeks. So don't buy them, try from your library first!

See full details here: <http://www.northyorks.gov.uk/index.aspx?articleid=13459>

Ann Chapman

Market Café in April

The Hovingham Playground Group will be running the next Market Café on April 6th.

If you would like to donate cakes or bakes then please contact David Richardson 01653 628227 or Ann Chapman 01653 627171

And, please make use of our lovely Playground in which, even in this weather, we are delighted to see hardy boys and girls and their parents and grand parents enjoying the great outdoors - albeit well wrapped up and gum booted - with tell tale rosy cheeks.

Thundercliffe's Fruits from the Sea

Quality Fishmongers of Scarborough
..Yorkshire fish & shellfish direct from the coast

See us every month at the
Hovingham Village Market
and now in Helmsley



Please ring if you want me to call or for a
Special Orders

Peter Thundercliffe 01723 500552 & 07948 502476



The Hovingham Village Market

Yorkshire Rural Oscar Winner – 2012
Yorkshire Farmers Market of the Year-2012



Next Markets 6th April & 4th May
35+ STALLS & Community Café
Hovingham Village Hall from 10:30am

SHOP LOCAL & SUPPORT LOCAL

www.hovingham-market.org.uk themarket@hovingham.org.uk

Natural Balances
Foot & Healthcare

PROFESSIONAL CARE
FOR HEALTHY,
COMFORTABLE FEET

~ Foot Health Treatments
~ Biomechanical Gait Analysis
~ Clinic Treatments & Home Visits
for the Housebound

Wider Fit Shoes -
Measuring, Ordering
& Fitting Service
available



Consultations by appointment

Tel 01751 430806


www.naturalbalances.co.uk



April 2013

1 st Mon	Easter Monday Bank Holiday	
2 nd Tue	Recycling Collection – Recycling Bins & Brown Compost Bin Hovingham Women's Fellowship – 7:30pm Home of Claire Orange-Bromhead Speaker - Christian Aid representative	
3 rd Wed	Worsley Arms Supper Club – Best of British Night - 6pm Worsley Arms Hotel Reservations required, please contact Hotel	
6 th Sat	Hovingham Village Market 10:30am to 1:30pm - Hovingham Village Hall - Please come along and support the Market, with the Community Café run by the Playground Group.	
7 th Sun	BCP Matins – 10:30am All Saints' Hovingham Methodist Service – 10:30am Hovingham Chapel – J. Lakin	
8 th Mon	Landfill Waste Collection – Green Bin Supermobile Library in Hovingham 5pm until 7pm - Location Hall Green	
10 th Wed	Marie Curie Magic Lantern Show with Pie & Peas Supper – 7pm Village Hall Tickets are £10 per person available from Janice Wood 01653 628952 and from Richard Wood's stall on Hovingham Market	 <p>Marie Curie Cancer Care <i>Devoted to Life</i></p>
14 th Sun	BCP Eucharist Service – 10:30am All Saints' Hovingham Methodist Service – 10:30am Hovingham Chapel – A. White	
15 th Mon	Recycling Collection – Recycling Bins & Brown Compost Bin	
17 th Wed	Worsley Arms Quiz – 7pm Worsley Arms Hotel Grab your knowledgeable friends and family for the Quiz Night.	
21 st Sun	Morning Praise – 10:30am All Saints' Hovingham Methodist Service – 10:30am Hovingham Chapel – Rev. G. Floyd Open Day – Hovingham Bowls Club – 1:30pm Bowls Club – Hovingham Village Hall Anyone who is interested is invited to come along and give it a try, bowls will be available. Please come along and give it a go, we would be delighted to see you Please contact Ian Battersby (628388) or Malcolm Hutton (Work 628222 or Home 628493)	
22 nd Mon	Landfill Waste Collection – Green Bin Mobile Police Office in Hovingham 5pm until 6pm - Location Hall Green Supermobile Library in Hovingham 5pm until 7pm - Location Hall Green	
28 th Sun	Eucharist Service – 10:30am All Saints' Hovingham Methodist Service – 10:30am Hovingham Chapel – Rev. Mike Smith	
29 th Mon	Recycling Collection – Recycling Bins & Brown Compost Bin	

May 2013

1 st Wed	Worsley Arms Supper Club – Thai Night - 6pm Worsley Arms Hotel Reservations required, please contact Hotel	
4 th Sat	Hovingham Village Market 10:30am to 1:30pm - Hovingham Village Hall - Please come along and support the Market, with the Community Café run by the Scackleton Action Group. The National Trust will be running a Community Stall at this Market.	
5 th Sun	BCP Matins – 10:30am All Saints' Hovingham Methodist Service – 10:30am Hovingham Chapel – L. Hayes	
6 th Mon	Landfill Waste Collection – Green Bin Supermobile Library in Hovingham 5pm until 7pm - Location Hall Green	
7 th Tue	Hovingham Women's Fellowship – 7:30pm Home of Sue Fitton Speaker – Bill Campbell-Trotter on Life in Hong Kong	
10 th Fri	Mobile Police Office in Hovingham 5pm until 6pm - Location Hall Green	
12 th Sun	BCP Eucharist Service – 10:30am All Saints' Hovingham Methodist Service – 10:30am Hovingham Chapel – M. Graham	
13 th Mon	Recycling Collection – Recycling Bins & Brown Compost Bin	
15 th Wed	Worsley Arms Quiz – 7pm Worsley Arms Hotel Grab your knowledgeable friends and family for the Quiz Night.	
19 th Sun	Morning Praise – 10:30am All Saints' Hovingham Methodist Service – 10:30am Hovingham Chapel – Rev. Mike Smith	
20 th Mon	Landfill Waste Collection – Green Bin Supermobile Library in Hovingham 5pm until 7pm - Location Hall Green	
26 th Sun	Eucharist Service – 10:30am All Saints' Hovingham Methodist Service – 10:30am Hovingham Chapel – S. Atkinson	
27 th Mon	Hovingham Social Committee Annual Car Boot Sale – Hovingham Village Greens	