

The Hovingham and Scackleton Newsletter

April 2012

Welcome to the Hovingham and Scackleton Newsletter

With the Queen's Jubilee celebrations rapidly approaching, this issue contains a number of articles and announcements about what will be happening in our community, giving advance notice and encouraging our readers to join in. There is also a look back to the success of the pantomime, Jack and the Beanstalk, and what we hope is the first of a series of short pen portraits of "Village People". We thank the authors of these contributions and all the other people who have contributed to this issue which is edited by Jill Knight and Martin Bell.

Contributions for the June issue are welcome. Please send them to newsletter@hovingham.org.uk by 15th May.

Newsletter NOW available in COLOUR for friends and family, anywhere around the world

Download from our website www.hovingham.org.uk or subscribe by email to newsletter@hovingham.org.uk

The Market goes to the House of Lords

On 7th March representatives of Hovingham Village Market were invited to the House of Lords for the annual Countryside Alliance "Rural Oscars" awards, hosted by Baroness Golding. A good number of members of both Houses of Parliament were present, including our MP Anne McIntosh who talked to us about Hovingham and the Market, expressing strong support.

The Market was there as Yorkshire Region winner in the Rural Enterprise category, alongside nine other regional winners from the UK and the Republic of Ireland. The national winners and runners-up in each category were introduced by the Countryside Alliance chairwoman, Kate Hoey MP, and the awards were presented by Clarissa Dixon-Wright who is well known for her support for country life, business and sports.

The Hovingham Village Market was not national award winner, but the publicity we have gained in press and broadcast media from being a regional winner has been valuable.



Village Hall

Planning a new indoor activity?

Our discounts can help!

Pilot session for regular use - up to 100% off !!

Residents, regular use - up to 50% off

Residents, occasional use - up to 25% off

Non-residents, regular use - up to 25% off



Hovingham Village Hall

Talk to us: call Janice on 01653 628952 or visit www.hovingham.org.uk

Spring Car Boot Sale



This year the Spring Car Boot Sale in aid of Hovingham Social Committee will be on

MONDAY 7th MAY

(May Day Bank Holiday)

Super-mobile Library

Don't forget to use our mobile library – it's a great asset to the village and offers Children's and Adult books, Audio books, DVDs, Internet access and a helpful librarian.

It is encouraging to see the number of villagers making use of the library, and in times such as these, if we don't use it

Check the Village Diary (Page 11) for visiting dates, every second Monday 5.00pm to 7.00pm outside Hovingham Hall.



Come and join OUR jubilations!

This FAMILY FUN DAY to celebrate the QUEEN'S DIAMOND JUBILEE will be a REAL Community Celebration with events and attractions for Hovingham and Scackleton residents of ALL ages.

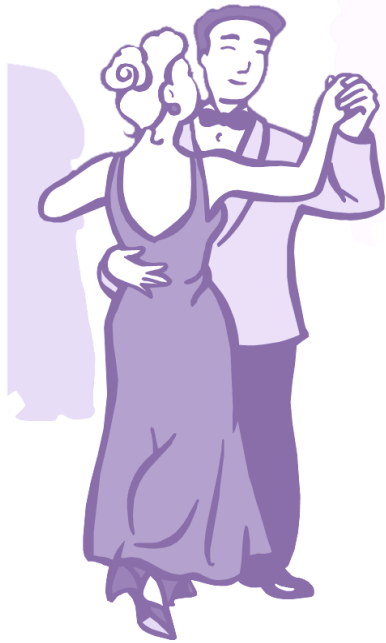
Centred on the cricket ground at Hovingham Hall, there will be FREE entrance for residents. People are encouraged to bring a picnic but various refreshments, including undercover seating, will also be available.

- * SWINTON BRASS BAND
- * FACE PAINTING
- * BOUNCY CASTLE
- * MAGICIAN
- * RACES
- * BARBECUE
- * GAMES
(including Welly Wanging)

- * TOUR THE HOUSE
(please apply for vouchers in advance from Estate Office 628771)
- * STROLL IN THE GARDENS
- * STRAWBERRIES & CREAM
- * TEA ROOM
- * MOCKTAIL BAR
(special, non-alcoholic drinks)

Mon June 4th, 3.00-6.00pm, Hovingham Hall

picture David Richardson: poster design Rob Thompson



Get out your ball gowns, dust off the dinner suit and let's celebrate the Queen's Diamond Jubilee in style. With the kind permission of Mr and Mrs William Worsley, Hovingham Hall will be the venue for the **Hovingham Jubilee Ball** on Saturday 26th May 2012 as part of the village Jubilee celebrations.

The ball is being organised by the Friends of Hovingham School but is open to everyone and it is hoped that it will bring residents of Hovingham and Scackleton and the surrounding areas together, young and not so young, to enjoy a special piece of history.

The night will start with drinks and canapés on the terrace or in the Hunting Hall with live music from Ollie Green followed by dinner in the famous and unique setting of the Riding School. There will be dancing afterwards to the band 'Cooler on the Coast' until carriages at 1.00am.

Tickets are £50 each or tables of 10 can be booked for £450. Booking forms are available at Hovingham Stores or they can be downloaded from the Hovingham School website: hovinghamprimary.org.uk

The deadline for bookings is the Queen's birthday – Saturday 21st April 2012.

Stephen Croft

Limited Edition – Diamond Jubilee Commemorative Mugs

A special limited edition fine bone china commemorative mug is being produced to celebrate the Diamond Jubilee in Hovingham and Scackleton. Everyone living in Hovingham and Scackleton born on or after 1st January 1994 will be given one by the Parish Council. Just over 200 mugs are being produced and the remaining mugs will be available to residents on a first-come-first-served basis.



Mugs can be purchased for £5 each; with a special price of £4 each when three or more are purchased at the same time.

To reserve your mugs please contact:

Sue Wainwright (628364)

Wendy Swann (628282) or

Parishclerk@hovingham.org.uk

Mugs will be available for collection in May.



WHO on earth is that?

Could that cherubic face, photographed all those years ago, really be our good friend X?



As part of our local celebrations of the Queen's Diamond Jubilee, it is hoped to mount a Picture Challenge, together with a round-up of pictures portraying life in Hovingham & Scackleton over the last 60 years.

Current residents - whether very recently arrived or more established - are asked to let the celebrations organisers have pictures of themselves or their families taken in the early part of the Queen's reign. These will be blown up and displayed on boards at the events on Monday June 4th. Viewers will be challenged to identify some of today's well known local residents from their rosy cheeked youth: answers will be posted nearby. We'd also welcome any pictures which show how much things have changed in our villages and in homes - anything to help us indulge in a little nostalgia!

Please have a rummage round for family snaps that we can use: they will be scanned and the originals returned to you immediately.

If you can help, please give **Rob Thompson** a call on 628640.

Meanwhile, planning of the local celebrations is developing well. Final details of the many attractions and events will be announced on posters and in the Newsletter.

Review – by Dennis Anderson

One of the joys of a village pantomime must be to see your friends performing on the stage and making utter fools of themselves. This, the members of the Hovingham Players did to perfection on Friday night when I watched the show! To name particular actors would be unfair but I am going to make an exception and mention Amy Smith. Her singing was really delightful and her performance so composed. This, for me, was a highlight from someone so young. Another pleasure was to watch the faces of the young children in the audience who were completely absorbed by the story and the antics of the talented Cast.



Particular mention must be made of the backstage staff and the work done by them. Plaudits are always given to the actors and actresses as they come forward to take their bow, and that is how it should be, but those working behind the scenes are equally deserving of applause.

Last, but by no means least, is the Director. Thank you for giving us such an enjoyable evening.

Well done the Hovingham Players!

From the Director

Hovingham pantomime 2012 Jack and the Beanstalk was another roaring success. We managed to fill the hall for four nights, raising nearly £4,000 for Hovingham village Hall and Sackleton Action Group.

I'm thinking the little Star trekkers from Hovingham School stole the show.

Thankyou, **Wendy Swann**



The
WORSLEY ARMS
Hotel

An exquisite, timeless country house setting with open log fires and stylish furnishings. All bedrooms have private bath, telephone, TV and room service. Four-poster suite for special occasions. Main Street Hovingham, York. Tel 01653 628234
www.worsleyarms.co.uk

Richard Holloway
Local Chimney Sweep

A local sweep, covering your area, I pride myself on doing a thorough job whilst keeping everything clean and tidy.

Friendly service with a smile!

Contact: Richard Holloway, 01751 432024
Please leave a message for a fast reply.



This is the first of what is envisaged to be a regular feature in the Hovingham and Scackleton Newsletter. A glimpse of someone who is of interest to the residents of the village

The first feature is a hard-working husband and wife team. Most of us will have probably seen their stall of fresh vegetables for sale outside their cottage on Becksides, all free from chemical pesticides and freshly gathered.

Sad to say Maria and John are cutting back on production and are proposing to take life a little easier this year, but are still keeping a smaller plot to grow for their own use; they are currently working on a fifth of an acre.

Maria was born in Italy near Foggia on the opposite side of the country from Naples. Jobs are hard to find around that area, so she took the opportunity to travel and started work at Gilling Castle. A very brave and exciting journey for a teenager travelling alone in 1955.

John was at that time employed in Gilling and it seems inevitable that two young people living in such a small village would meet. They celebrated 50 years of marriage last year!

They came to live in Hovingham 25 years ago and quickly became part of village life, John working for M. C. Marshall's at Grimston and Maria ever busy, working at the Hall and other houses in the area.

Arthur Killeley

Hovingham Action Group News

The Winter Maintenance Programme has provided grit to residents and kept the pavements clear during the recent snow. The Market has been awarded the Yorkshire Rural Oscar for Enterprise Projects.

Bee Project

The bees are currently over-wintering and hopefully two more hives can be established if swarms can be found. The honey will be on sale at the Market this year if bees ok.

Christmas Tree

It has been decided to provide a tree and lights for Christmas 2012. The Group will look at possible suppliers and sources of finance.

Community Cafés

The Group raised £612 running the Community Café on 3rd December last year and will be providing the Community Café at the April Market on 7th April this year.

Community Plan and Action Plan

The Group are currently undertaking a review of the Community Plan and determining the level of interest in outstanding, or new, items.

Hovingham Snow Clearing

10 volunteers turned out on three days during the recent snow. Additional grit bins have been requested for Pasture Lane and Mowbray Crescent, providing local supplies of grit for use by residents. Grit bins around the village have all been replenished.

Litter Bins

Following success of the prototype, construction of a further three replacement bins will take place in the next couple of months, together with a new one for the Bakery. The Market Group have kindly agreed to provide a grant to cover the expenses.

Market

The Group have received a Rural Oscar for Rural Enterprise in Yorkshire from the Countryside Alliance and were invited to the National Awards Ceremony at the House of Lords on March 7th.

Pasture Lane

The Action Group will be ensuring that new residents are contacted when they move in and invited to take part in Village Groups and Events, including the Bring, Share and Enjoy event.

Path Maintenance

Planned for Church Street in May.

Railings

The Parish Council have been asked about feasibility of "Professional" input.

Signs

A sign cleaning expedition is planned for Saturday 14th April, starting 10am at the Village Hall, all welcome.

Village Flood and Emergency Event

This was held on 15th March in the Village Hall.

Wildlife Area

During the Spring this area will be built in the Playground.

In November 2011 the Hovingham Action Group (with support from the AONB) planted further Spring Bulbs on York Bank and down by the Sewage Farm.

These not only provide welcome Spring colour but early food for our Beehives.

It is hoped further planting will be done later this year and further improve the display.



Thank you from New Zealand

Please say a BIG thank you to all my old friends in Hovingham who signed the card brought by Pop when we met up last month for a cruise. It was such a surprise. I opened it on the cruise ship and actually dropped it when I saw all the messages! It was absolutely wonderful. So nice to see all the familiar names. I do keep in touch with quite a few, but it was so lovely to get all those kind messages from everyone else too. Thank you, everyone. I've attached a photo of us at Cape Reinga lighthouse - right at the top of New Zealand - on 25th January - beneath the signs pointing to faraway places. And one of the view. The Pacific Ocean meets the Tasman Sea right there, and the Maori spirits "leave" from there too, so it's always something special.

Thanks very much. Best wishes, Adrienne



Hovingham Fireplaces (01653) 628222

Worsley Arms Business Park,
Hovingham YO62 4LA

Fireplaces

Marble or Granite Surrounds

Gas Fires, Stone Fireplaces

Electric Fires

Multi Fuel Stoves

Kitchen granite worktops

www.hovinghamfireplaces.co.uk



Dedicated small animal practice in modern purpose-built premises in Helmsley with branch surgeries in Pickering and Kirkbymoorside. Our friendly team of four vets, four fully qualified nurses and support staff are all committed to providing the best possible care for your pets. We are your pets' GP, surgeon, dentist and midwife.

Station Road,
Helmsley YO62 5BZ
(01439) 771166



With branches at
Kirkbymoorside
And Pickering

The Parish Council met on Wednesday 14th March 2012 in the community room at Hovingham, with four councillors and four electors present. The following items were discussed and decisions made.

Library Super mobile. The new site on Hall Green is now established. Posters will be displayed if the visit is cancelled.

Railing maintenance. Discussions are ongoing about the maintenance of the railings on Coronation Green and we await a quote from a private company.

Winter maintenance. Two additional grit bins will be placed in Mowbray Crescent and Pasture Lane.

Mini Recycling Centre Hovingham. The mini recycling centre at the village hall will remain and be reviewed as the new kerbside collection (currently delayed) is rolled out.

Road Closures. The timing of the work between Wath and Slingsby cross roads will depend on the conclusion of the A64 project.

Renewal of Local Bus Contracts. No changes have been made to the Hovingham services.

Traffic Concerns Park Street, Hovingham. The letter from NY Highways in response to the concerns of residents about the movement of HGVs on Park Street does not address the questions asked. Further clarification will be sought from the Development Control Department.

Grass Cutting. J E Clifford & Sons are to be asked to continue to cut the verges, and D. Skelton and Mr Shepherd -Cross to continue to cut the cemetery and Coronation Green.

Thanks were recorded to Mr Fisher for repairing grass verges.

Ryedale Plan Local Plan Strategy. Councillor R. Wainwright reported that the strategy would be discussed at the RDC meeting at the end of April. The allocation of sites would begin in 2013.

Policy for Allocation of New Homes Bonus. £100,803 of the £214,540 total allocation : there had been development through a bid process on a Geographic basis. Parishes within each Ward have 'til March 2012 to bid for a maximum amount to be allocated (Scackleton £3581, Hovingham £2003).

Hotspot Campaign. Anyone interested in setting up a heating oil buying group can get advice from kathryn.chapman@ruralyorkshire.org.uk or 07825 380052.

Scackleton Councillor Mrs W. Swann had no issues to raise.

Diamond Jubilee Report. Details of the event to be held on Monday 4th June on the cricket field at Hovingham Hall from 3pm to 6pm to which all residents of Hovingham and Scackleton are invited are now available.

It was agreed to purchase 90 commemorative beakers for all young people under 18 years of age in Hovingham and Scackleton, and additional beakers will be available for residents to purchase at £5 each, three or more £4 each

Hovingham School Skateboard Presentation. Five councillors and two police officers attended a presentation where the village school children outlined their project for a skateboard park in the village. The PC felt more work needed to be done on a business plan to include costs, funding, location, safety and maintenance, and proposed that the Playground Committee be asked to consider its feasibility, including siting it on the playground.

Next PC meeting is 9th May in the village hall.



FAMILY HISTORY RESEARCH

We show you how or do it for you

www.mintwood.co.uk

JANICE WOOD
Mintwood Services
5 Blue Row, High Street
Hovingham
YORK. YO62 4LA

Mintwood

Phone: 01653 628952

Mobile: 07813 977613

email: research@mintwood.co.uk

abbEpics

www.abbepics.com

5 High Street
Hovingham
YORK, YO62 4LA
01653 628952
07786001059

Nostalgia isn't what it used to be!

Photos, slides

& documents scanned &
transferred to CD or DVD

Recover those lost memories on VHS tape too!

Holy Week and Easter

As quoted in the Newsletter in a previous issue, relations between the Anglican and Methodist congregations have never been closer. At no time is this more true than during Holy Week and Easter when we join together for three consecutive services. On Palm Sunday (1st April at 10.30am) and on Good Friday (6th April at 2.00pm) we are all at the Methodist Church, whilst on Easter Sunday (8th April at 10.30am) we all join together for a United Eucharist Service at the Parish Church. **Eddie Lucas**

Other Services in Hovingham Churches during April and May

15 th April	Chapel:	10.30am	(Mr Noel Smith)
22 nd April	All Saints':	10.30am	Morning Praise
	Chapel:	10.30am	(Mrs Florence Allison)
29 th April	Chapel:	10.30am	United Service at Slingsby.
6 th May	All Saints'	10.30am	Matins (BCP)
	Chapel:	10.30am	(Mrs Linda Stannard)
13 th May	All Saints'	10.30am	Eucharist (BCP)
	Chapel	10.30am	(Mr Anthony White)
20 th May	All Saints'	10,30am	Morning Praise
	Chapel:	10.30am	(Revd Graham Sellars)
27 th May	Chapel:	10.30am	(Revd J Boxwell)

**Amnesty Coffee Morning - 14th April 10 am**

Saturday April 14th in the Community Room 10 till 12ish

- Another Spring Books day.

Bring a nice paperback you have enjoyed and buy one too. No worry if you are not wanting to choose books, just come for a coffee and talk to people. Coffee etc free, we'll be pleased to see you.

Thanks **Jill Knight**



50 YEARS
amnesty.org.uk

HOVINGHAM BAKERY



Elaine & Chris Sayles

Brookside
Hovingham
York
YO62 4LG

Phone: 01653 628898
Email:
hovinghambakery@aol.com

Your local artisan bakers

The wide range of breads and cakes are all made by Elaine and Chris with their staff at Brookside

Bakery open Tues - Sat 8.30 to 5pm

Sunday 10.30 to 5pm

Tearoom open Tues – Sat 9.30 to 4.30pm

Sunday 10.00 to 4pm

Buffet Lunch is served 11 to 3pm

Closed all day Monday

www.naturalbalances.co.uk

Natural Balances
Foot & Healthcare

Professional care for healthy, pain-free feet!

Foot Health Treatments

Biomechanical Gait Analysis

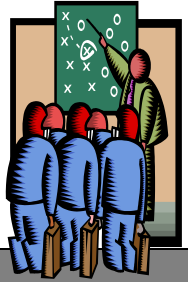
Wider fit shoe measuring, ordering & fitting service

Tel : 01751 430806

Email: info@naturalbalances.co.uk



If you would like to take part in the consultation, then the Parish Council encourages you to firstly see the detailed application; you can then make your views known to the relevant Planning Officer, and the Parish Clerk (Sue Wainwright, parishclerk@hovingham.org.uk). This ensures the Parish Council, and the Planning Department, are aware of your views.



Most local planning applications can be viewed on the website of Ryedale District Council (www.ryedale.gov.uk) and the remainder on that of North Yorkshire County Council for the rest (www.northyorks.gov).

Current and Recently Decided Applications

Hovingham Hall, Church Street, Hovingham YO62 4LX	RDC 12/00205/LBC	PENDING CONSIDERATION
Formation of new internal doorway and blocking up of existing internal doorway.		
East View Cottage, High Street, Hovingham YO62 4LA	RDC 12/00182/FUL	PENDING CONSIDERATION
Change of use of existing dwelling to form a self contained annex		
St Bedes, Park Street, Hovingham YO62 4JZ	RDC 12/00068/HOUSE	PENDING CONSIDERATION
Erection of side wall with entrance door and front entrance door canopy		
Listers Cottage Main Street Hovingham	RDC 11/01293/LBC	APPROVED
Installation of roof light to rear elevation (retrospective application) and replacement of three first floor windows with sliding slash windows to rear elevation.		
Hovingham Lodge (Hayes), Scackleton Lane, Scackleton	RDC 11/01240/EXTH	APPROVED
Extension of time limit for implementation of approval 08/01032/FUL dated 23/12/2008 for the erection of double garage		
Methodist Church, Market Square, Hovingham	RDC 11/00853/LBC	APPROVED
Re-roofing of chapel using new handmade clay pantiles and vestry using existing salvaged clay pantiles.		
Land to the South of Pasture Lane, Hovingham	RDC 11/00107/EXTM	(NOW) APPROVED
Extension of time limit to application 07/00607/MFUL for erection of 5 five-bed dwellings, 4 four-bed dwellings, 9 three-bed dwellings, 2 two-bed dwellings and four two-bed apartments together with associated garages, parking, amenity areas, access road and landscaping.		

Ampleforth & Hovingham Surgery hours extended

HOVINGHAM SURGERY

Tel: 01653 628203

To order a repeat prescription ring 01653 628203 and allow 2 working days. Closed for lunch 12.30am – 1.00pm

	Reception opening times	Appointment times	Doctor
Monday	8.30am – 3.00pm	8.30am – 3.00pm	Dr. Pamela Manners
Tuesday	8.30am – 12.00pm	8.30am – 12.00pm	Dr. Heidi Schwarze
Wednesday	8.30am – 11.30am 2.00pm – 4.00pm	8.30am – 11.30am 2.00pm – 4.00pm	Practice Nurse Dr. Kaye Mechie
Thursday	4.00pm – 6.00pm	4.00pm – 6.00pm	Dr. Peter Ticehurst
Friday	8.30am – 12.30pm 1.00pm – 4.00pm	9.30am – 12.00pm 2.30pm – 3.30pm	Health Care Assistant Dr. Gregory Black

In an emergency between 6pm and 8am Monday to Friday or the weekend and bank holidays

- ring 0845 056 8060

You can now make appointments (for Hovingham or Ampleforth and order repeat prescriptions on the Surgery website <http://www.ampleforth-surgery.co.uk/>)

GCSE Science Tutoring
25 years secondary teaching experience, current CRB
Reasonable Rates
Paul Gatenby (01845)-597047



Exciting New Hair Studio – offering you a superior salon experience in an informal and relaxing atmosphere.

*Park Street, Hovingham
Tel 01653 628968*

	Jan	Feb	Mar	Apr	May	Jun	Jul	Aug	Sep	Oct	Nov	Dec	Total
1994				40	27	6	47	28	79	63	62	49	401
1995						27	19	30	98	15	54	48	291
1996				15	32	25	21	56	8	28	66	32	283
1997	32	36	7	4	55	120	41	72	12	21	52	99	551
1998	81	2	73	81	40	93	52	7	34	95	46	33	637
1999	67	16	72	42	47	112	36	47	70	63	44	78	694
2000	37	41	10	114	68	38	40	39	97	167	127	69	847
2001	40	77	50	81	30	59	37	50	74	90	40	30	658
2002	38	108	28	31	68	30	56	121	40	104	109	94	827
2003	83	25	18	28	69	47	77	19	50	18	56	73	563
2004	85	62	31	111	19	51	52	134	15	142	18	24	744
2005	33	50	42	47	40	48	66	39	47	82	60	35	589
2006	27	38	95	47	108	24	18	105	61	80.5	53	78	735
2007	66	64	14	5	56	129	111	31	45	23	58	64	666
2008	142	30	66	69	24	81	62	123	80	48	52	53	830
2009	48	47	17	25	44	58	69	63	31	54	134	86	676
2010	83	58	47	21	11	37	42	42	82	64	74	31	592
2011	43	68	6	2	41	52	48	112	25	67	28	66	558

2012	49	16	19*										
Avg	60	48	38	45	46	58	50	62	53	68	63	58	619

1997+ 905 722 576 706 679 927 759 892 738 1052 923 847 10,166

Note: 10,166mm equals 400.24 inches or 33 feet 4.24 inches

* Rainfall to 23rd March is only 19mm and the forecast for the rest of the month is to be fine – so another dry month!!

Reproduced with the permission of Robert Wainwright



The Hovingham Village Market

Yorkshire Rural Oscar Winner - 2012



Next Markets 7th April & 5th May

35+ STALLS and Community Café

Hovingham Village Hall 10:30am to 2:30pm

SHOP LOCAL & SUPPORT LOCAL

www.hovingham-market.org.uk themarket@hovingham.org.uk



Beef, Lamb & Pork - Free Range Eggs - Fresh Seasonal Vegetables
Choice of Sausages, Burgers and Sweet Cured Hams
Fresh Turkey and Chickens Available for Christmas
Orders taken NOW

We are only 2 miles West of Hovingham

Everything we sell is grown or
born & reared on our farm



THE WALL, COULTON

CORNER HOUSE FARM, COULTON, HOVINGHAM, YORK

OPEN 24 HOURS, 7 DAYS A WEEK

PHONE: 01347 888293 www.thewall-coulton.co.uk

Thundercliffe's Fruits from the Sea

Quality Fishmongers of Scarborough
Yorkshire fish and shellfish direct from the
coast

See us every month at the
Hovingham Village Market and in
Hovingham on Wednesdays 12-
1pm



Please ring me if you want me to call or for Special Orders
Peter Thundercliffe 01723 500552 & 07948

April 2012

1 st Sun	United Palm Sunday Service – 10:30am Hovingham Chapel, Ann Corner
2 nd Mon	Recycling Collection – Green Recycling Box and Brown Compost Bin
3 rd Tue	Hovingham Women's Fellowship – 7:30pm – Home of Sue Fitton Diana Wallace on "Words and Music" – Meet at Village Hall @ 7pm for transport to Helmsley
4 th Wed	Gentle Exercise Group – 2:30 pm to 3:30pm – Hovingham Village Hall
	Compline & Meditation – 7:30 pm St Georges' Scackleton
5 th Thur	Maundy Thursday - Morning Prayer – 10:30 am – All Saints' Hovingham
	The Street Parishes Lent Course – 7:30 All Saints' Appleton - Maundy Thursday "Last Supper" Communion Service by Methodists & Anglican Churches – All Welcome
6 th Fri	Good Friday Bank Holiday
	Last Hour Service – 2:00 pm – Hovingham Chapel
7 th Sat	Hovingham Village Market 10:30am to 2:30pm - Hovingham Village Hall Please come along and support the Market; The Hovingham Action Group will be running the Community Café
8 th Sun	United Easter Eucharist – 10:30am Hovingham All Saints' Hovingham
9 th Mon	Easter Monday Bank Holiday
10 th Tue	Landfill Waste Collection – Green Bin
11 th Wed	Gentle Exercise Group – 2:30 pm to 3:30pm – Hovingham Village Hall
14 th Sat	Hovingham Village Sign Cleaning – 10am at Hovingham Village Hall Come along and help the team clean just over 100 signs around the village
15 th Sun	Benefice Service – 10:30 am – All Saints' Slingsby
	Chapel Service – 10:30 am – Hovingham Chapel, N Smith
16 th Mon	Schools – Start of Summer Term
	Recycling Collection – Green Recycling Box and Brown Compost Bin
18 th Wed	Gentle Exercise Group – 2:30 pm to 3:30pm – Hovingham Village Hall
22 nd Sun	Morning Praise – 10:30 am – All Saints' Hovingham
	Chapel Service – 10:30 am – Hovingham Chapel, F Allison
23 rd Mon	Landfill Waste Collection – Green Bin
	Supermobile Library in Hovingham 5pm until 7pm - Location Hall Green
25 th Wed	Gentle Exercise Group – 2:30 pm to 3:30pm – Hovingham Village Hall
29 th Sun	United Methodist Chapel Service at Slingsby – 10:30 am – Slingsby Chapel
30 th Mon	Recycling Collection – Green Recycling Box and Brown Compost Bin

May 2012

1 st Tue	Hovingham Women's Fellowship – 7:30pm Home of Maureen Lucas (Hovingham) Children in Distress, a talk by Edward Errington
2 nd Wed	Gentle Exercise Group – 2:30 pm to 3:30pm – Hovingham Village Hall
5 th Sat	Hovingham Village Market 10:30am to 2:30pm - Hovingham Village Hall Please come along and support the Market; The Hovingham Tennis Club will be running the Community Café
7 th Mon	Early May Bank Holiday
	Spring Car Boot Sale – in aid of Hovingham Social Committee
8 th Tue	Landfill Waste Collection – Green Bin
9 th Wed	Gentle Exercise Group – 2:30 pm to 3:30pm – Hovingham Village Hall
14 th Mon	Recycling Collection – Green Recycling Box and Brown Compost Bin
21 st Mon	Landfill Waste Collection – Green Bin
	Supermobile Library in Hovingham 5pm until 7pm - Location Hall Green
	Hovingham Action Group Meeting – 7pm at Community Room - All very welcome
23 rd Wed	Peal of Bells – 2:30pm to 3:30pm - All Saints' Hovingham
28 th Wed	Recycling Collection – Green Recycling Box and Brown Compost Bin

To add events or receive your own weekly email copy, please contact events@hovingham.org.uk

Churches	All Saints C of E, Hovingham	Revd Beryl Bowes	(01653)	690663
	Methodist Chapel, Hovingham	Revd Graham Sellars	(01653)	694689
	St Aidan's RC, Oswaldkirk	Dom Edgar Miller	(01439)	766416
	St George's, Scackleton	Revd Beryl Bowes	(01653)	690663
Councils	County Councillor	Clare Wood	(01904)	489362
	District Councillor	Robert Wainwright	(01653)	628364
	Parish Council – Parish Clerk	Sue Wainwright	(01653)	628364
	Member of Parliament	Anne McIntosh	(01845)	523835
	North Yorkshire County Council	County Hall, Northallerton	(0845)	872 7374
	Ryedale District Council	Ryedale House, Malton	(01653)	600666
Doctors	Ampleforth Surgery		(01439)	788215
	Hovingham Surgery		(01653)	628203
	Malton Surgery		(01653)	600069
Emergency Services	Community Police	PC Andy Grant. PCSO Nicki Pounder	101	
	EMERGENCY CALLS - 999			
	NHS Direct		(0845)	46 47
Schools	Hovingham C of E School	Maureen Skinner – Head	(01653)	628358
	Ryedale School	Mr R Crane – Head	(01439)	771665
Transport	Bus Service	Stephensons of Easingwold	(01347)	838990
	Community Transport	Red Cross – Gill Morrow	(01653)	696188
		Ryecat	(01653)	699059
	Taxis	Helmsley – Jeb Taxis	(01439)	770536
		Malton – Ryedale Taxis	(01653)	600030
	Trains		(08457)	484950

Please visit www.hovingham.org.uk for further details

Clubs and Recreation

Bowls	Malcolm Hutton	(01653) 628493
British Legion	Rob Thompson	(01653) 628640
Children's Playground	Fiona Amer	(01653) 628144
Cricket	Paul Deverell	(07760) 178728
Iyenga Yoga	Shirin Marshal	(01751) 432956
Junior Cricket	Stuart Prest	(07720) 941090
Ryedale Family History	Janice Wood	(01653) 628952
Sew Easy	Hilda Lincoln-Smith	(01653) 628763
Table Tennis	Martin Potter	(01653) 628065
Tennis	Trudy Visser	(01653) 628599
Village Hall Bookings	Janice Wood	(01653) 628952
Women's Fellowship	Sue Goodwill	(01347) 888613
Young Farmer's	Bruce Wilson	(01653) 628567

Local Businesses

Beck Cottage – Holiday Let	Pop Day & Robert Richardson	(01653) 628607
Chimney Sweep	Richard Holloway	(01751) 432024
Edgemoor Vet	George Skinner	(01439) 771166
Electrical Contractors	Alec Quarton	(01653) 628730
Family History Research	Janice Wood	(01653) 628952
Fishmonger	Peter Thundercliffe	(01723) 500552
Foot & Health Care	Alison Holloway	(01751) 430806
Home Cottage – Holiday Let	R & B Williams	(01287) 630491
Hovingham Bakery & Spa Tearooms	Elaine & Chris	(01653) 628898
Hovingham Estate	Rupert Drury	(01653) 628771
Hovingham Fireplaces	Malcolm Hutton	(01653) 628222
Hovingham Stores	Margaret Goodwill	(01653) 628934
Little Lamb Wool Co.	Sally Goodwill	(01653) 628896
Malt Shovel Inn	Steve	(01653) 628264
Mintwood Gardening Service	Richard Wood	(01653) 628952
Park Salon	Alison Wilson	(01653) 628968
Plumbing & Heating Engineer	Oliver Quarton	(07824) 663448
The Wall, Coulton	Peter Stark	(01347) 888293
Worsley Arms Hotel	Tony Finn	(01653) 628234

If you would like to add details, or you know of details that need changing, then please contact

newsletter@hovingham.org.uk